

Greenway Trails

Interior Features

- Home isSM Connected-America's Smart HomeSM (See Reverse side for details)
- Ceramic tile flooring at Entry, Halls (per plan), Utility, Kitchen/Breakfast, Family Room and Bathrooms
- Continuous filament stain and soil resistant carpet with ½" pad
- Iron spindles on stairs (per plan) with stained handrail
- Eased sheetrock corners including windows
- Quartz vanity top with double sinks in the Bath 1
- Oversized walk-in shower at Bath 1
- Elongated commodes in all baths
- Pedestal sink in Powder Room (per plan)
- Wood shelving in all closets, pantry and Utility Room
- Bedroom 1, Family Room and Game Room (per plan will be blocked and pre-wired to accept fan/light
- Ceiling fans in Bedroom 1, Family Room and Game Room/Loft if applicable
- Raised panel interior doors
- Moen® chrome finish plumbing fixtures with lifetime warranty throughout
- Matching kitchen, utility room and vanity cabinets throughout the home
- Kwikset® brushed nickel interior & exterior door hardware
- Coordinating brushed nickel lighting package
- 5 ¼" base trim

Kitchen Features

- 42" cabinets with crown molding
- Stainless steel appliances (dishwasher, oven, microwave, gas cooktop, and vent hood-vented to exterior)
- Granite or quartz countertops per package
- Ceramic tile backsplash
- Stainless steel undermount kitchen sink with garbage disposal
- Moen® chrome pull-out faucet

Exterior Features

- Landscape package (includes front/side/back sod)
- Full sprinkler system with rain sensor
- Fully fenced rear yard with gate
- Covered Patio included or optional (per plan)
- Domestic kiln dried brick with buff mortar
- Composite shingles with 30-year limited warranty
- Partial guttering
- Cast stone address plaque
- 6'8" Raised panel fiberglass stained front door
- Raised panel ½ lite back door
- Divided lite windows on front elevation
- Light at the front door (per plan)
- Garage door opener

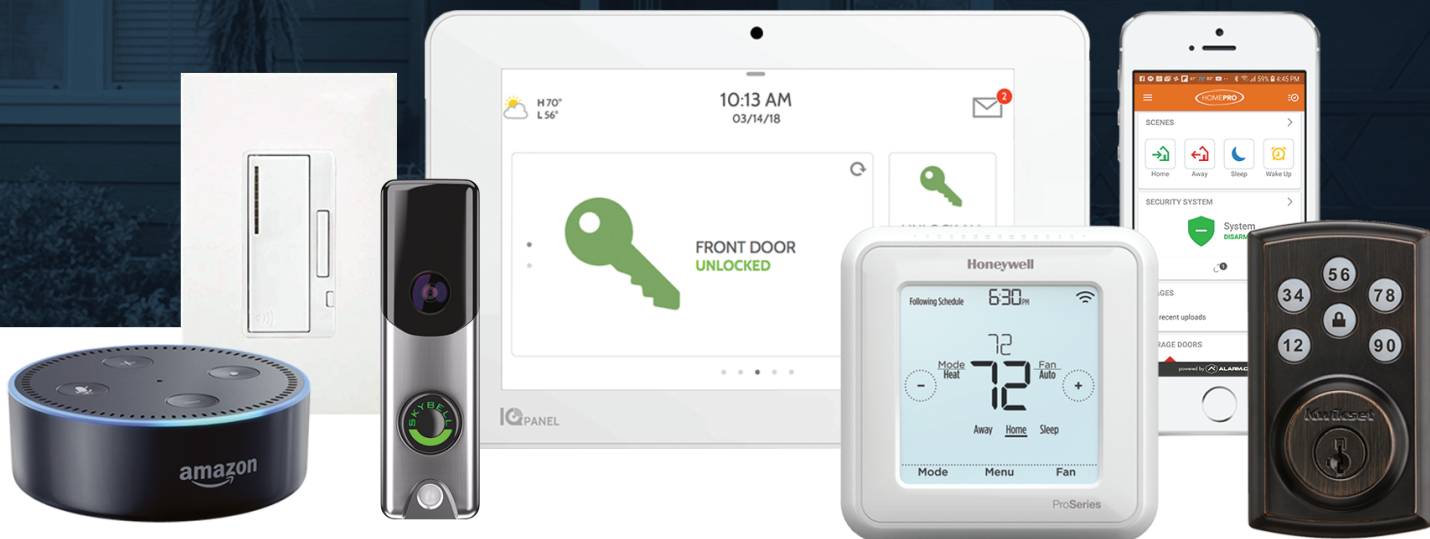
Construction & Energy Features

- High-efficiency 16 SEER heating/cooling system with Honeywell T6 Pro Z-WaveTM thermostat
- Gas central heating
- Tankless water heater
- Square DTM surge protection
- Double pane, Low-E, vinyl windows with Argon gas
- Synthetic roofing underlayment
- R-13 fiberglass insulation in exterior walls
- R-19 insulation at sloped ceilings
- R-38 fiberglass insulation in flat ceiling areas
- Third party quality inspections for framing
- 10 Year Homebuyer's Warranty
- 2 Year limited Mechanical Warranty
- Fully sheetrock and painted garage
- Smoke/carbon monoxide detectors installed per code
- Engineered post tension foundation
- All concrete to be 3500 psi
- Poly moisture barrier beneath slab
- Taexx built-in pest control system
- Bora-Care® application to protect building materials against wood destroying insects

drhorton.com/texas/fort-worth

D.R. Horton is an Equal Opportunity Builder. Home and community information including pricing, features, terms and availability are subject to change prior to sale at any time without notice or obligation. Prices, plans, features and options are subject to change without notice. Additional restrictions may apply. Please check the accuracy of information provided with your Sales Counselor prior to purchasing. Features noted above could be plan specific. Rev. 3.31.21

Home isSM CONNECTED



YOU'LL NEVER BE TOO FAR FROM HOME.

Monitor and control your home from your couch or from 500 miles away. Connect to your home with your smartphone, tablet or computer.

HOME LIFE CAN BE HANDS-FREE.

It's never been easier to settle into a new routine. Set the scene with your voice, from your phone, through the Qolsys panel – or schedule it and forget it. Your home will always be there for you.

NO MORE BOXES OF USELESS TECH.

Our priority is to make sure you have the right smart home system to grow with you. Our homes speak to Bluetooth, Wi-Fi, Z-Wave and cellular devices so you can sync with almost any smart device.

D.R. Horton is an Equal Opportunity Builder. A D.R. Horton Smart Home is equipped with technology that includes the following: a Z-Wave programmable thermostat manufactured by Honeywell; a Z-Wave door lock manufactured by Kwikset; a Smart Switch; a Qolsys, Inc. touchscreen Smart Home control device; an automation platform from Alarm.com; a SkyBell video doorbell; and an Amazon Echo Dot. D.R. Horton reserves the right, without prior notice, to substitute other products for those listed above. Other Smart Home technology features may be offered for an additional charge. For Smart Home technology included in the home to work, homeowners must obtain and pay for their own Internet service and may need to purchase compatible devices and to maintain accounts with third parties for the services. D.R. Horton makes no representation or warranty that any or all of the Smart Home technology is secure, will meet any homeowner needs or will provide any level of physical or cyber security for the home – even if the technology is working as intended. All photos and drawings are for illustration purposes only. See a D.R. Horton sales agent for complete information. D.R. Horton is a registered trademark of D.R. Horton Management Company, Ltd. All other trademarks shown are the property of their respective owners. Amazon, Echo, Alexa, and all related logos are trademarks of Amazon.com, Inc. or its affiliates.