



THE PRESERVE
AT TIDEWATER

201 Laridae Court
Sneads Ferry, NC 28460
910.877.8376
WilmingtonInfo@drhorton.com

The Preserve at Tidewater by D.R. Horton

A place where living comes naturally!



Welcome to The Preserve at Tidewater. An exclusive community with beautiful trees and stunning homes. A marsh overlook pavilion, will be a central part of the community, and provides breathtaking views of the natural habitat that lies at the center of The Preserve. Residents will feel like they're on vacation when they splash in the elegant neighborhood swimming pool, lounge on the spacious sundeck and prepare a delicious meal in the outdoor grilling kitchen.

D·R·HORTON®
America's Builder
drhorton.com/wilmington



D.R. Horton is an equal housing opportunity builder. Home and community information, including pricing, included features, terms, availability and amenities, are subject to change and prior sale at any time without notice or obligation. Pictures, photographs, features, colors and sizes are approximate for illustration purposes only and will vary from the homes as built. All homes constructed by D.R. Horton, Inc. License #29676.

Darby

3-4 Bedrooms, 2 Baths
2-Car Garage, 1883 Sq. Ft.

Glynn

4 Bedrooms, 2.5 Baths
2-Car Garage, 2350-2360 Sq. Ft.



Elevation A



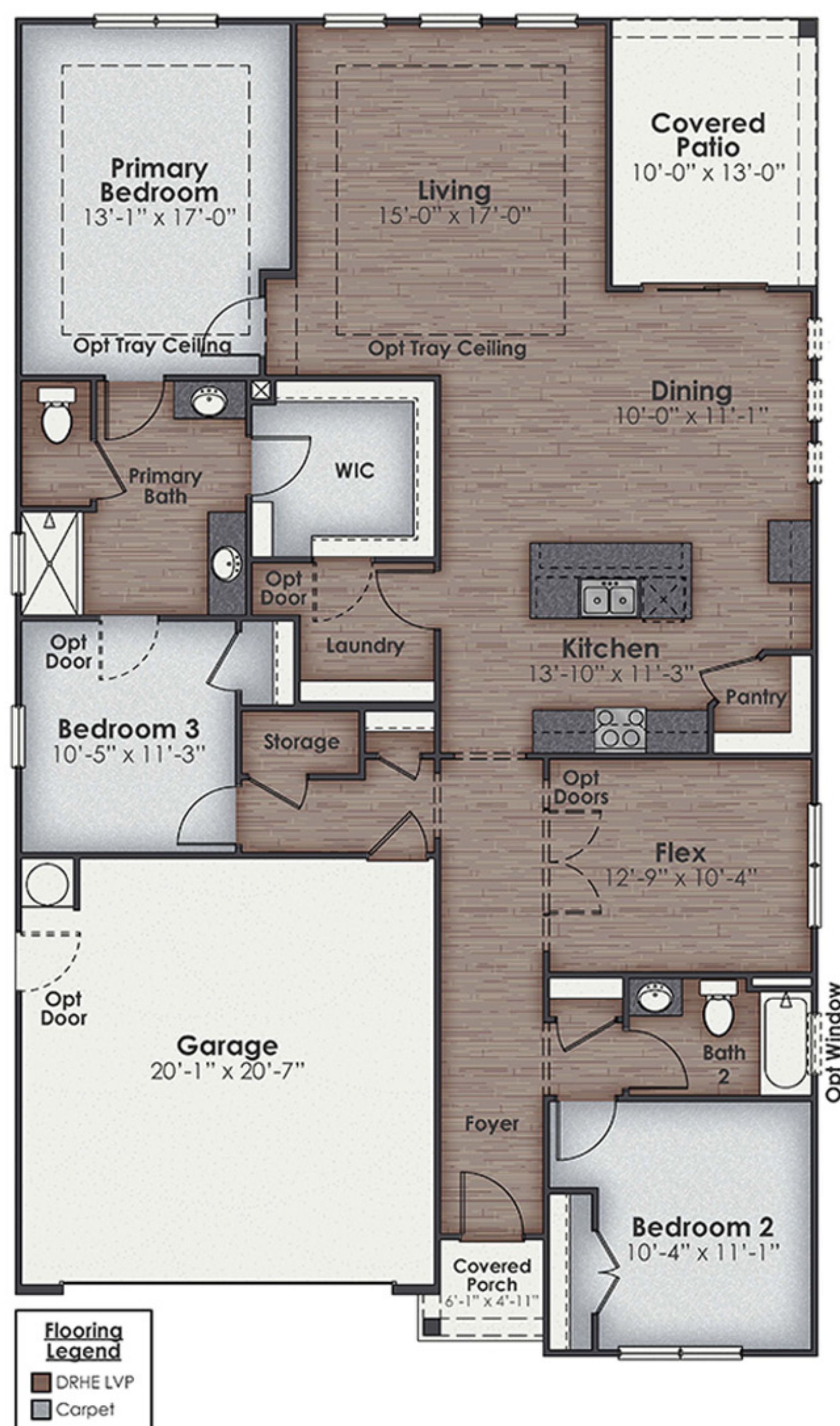
Elevation A



Elevation C



Elevation B



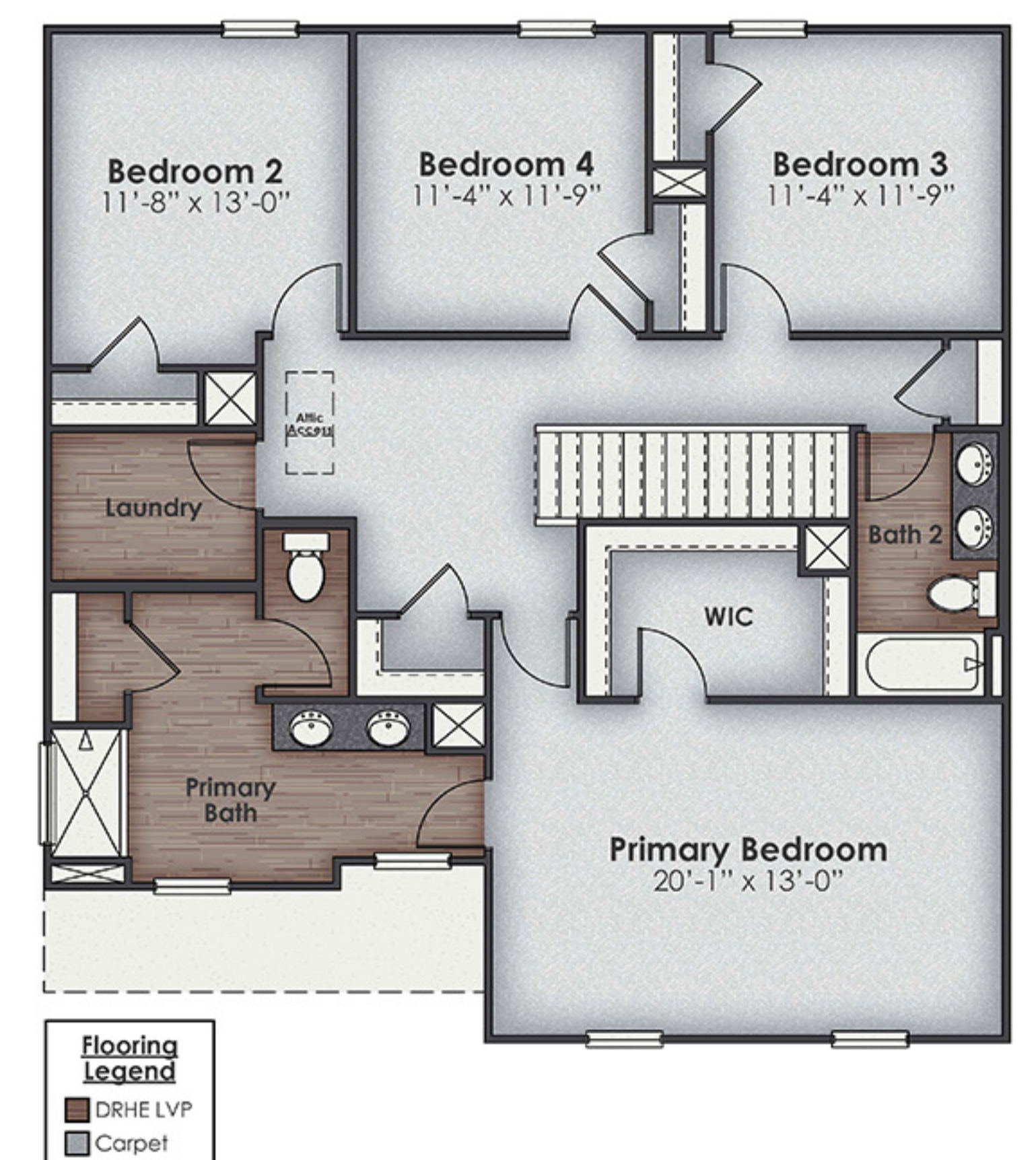
Opt BR 4



Elevation D



First Floor



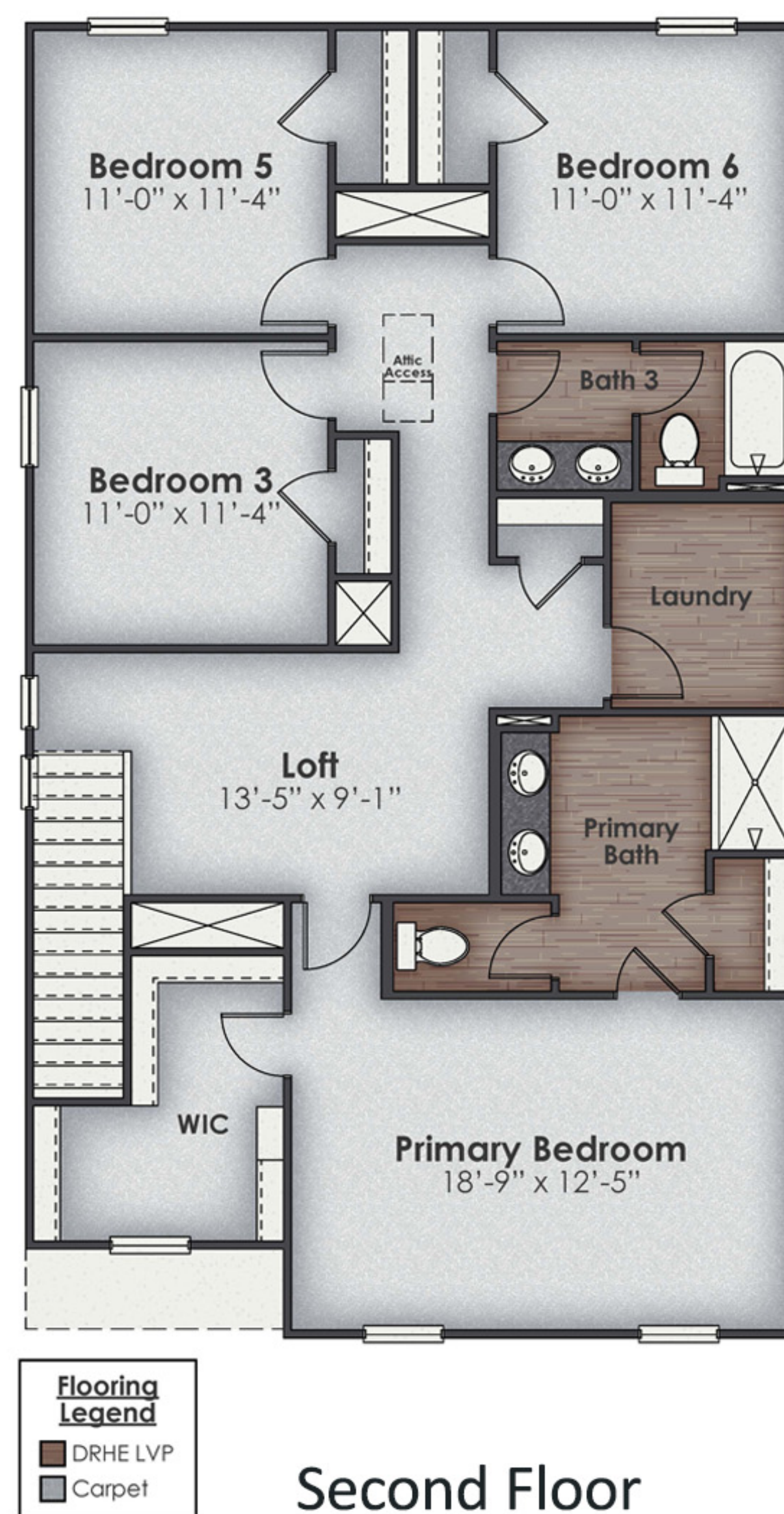
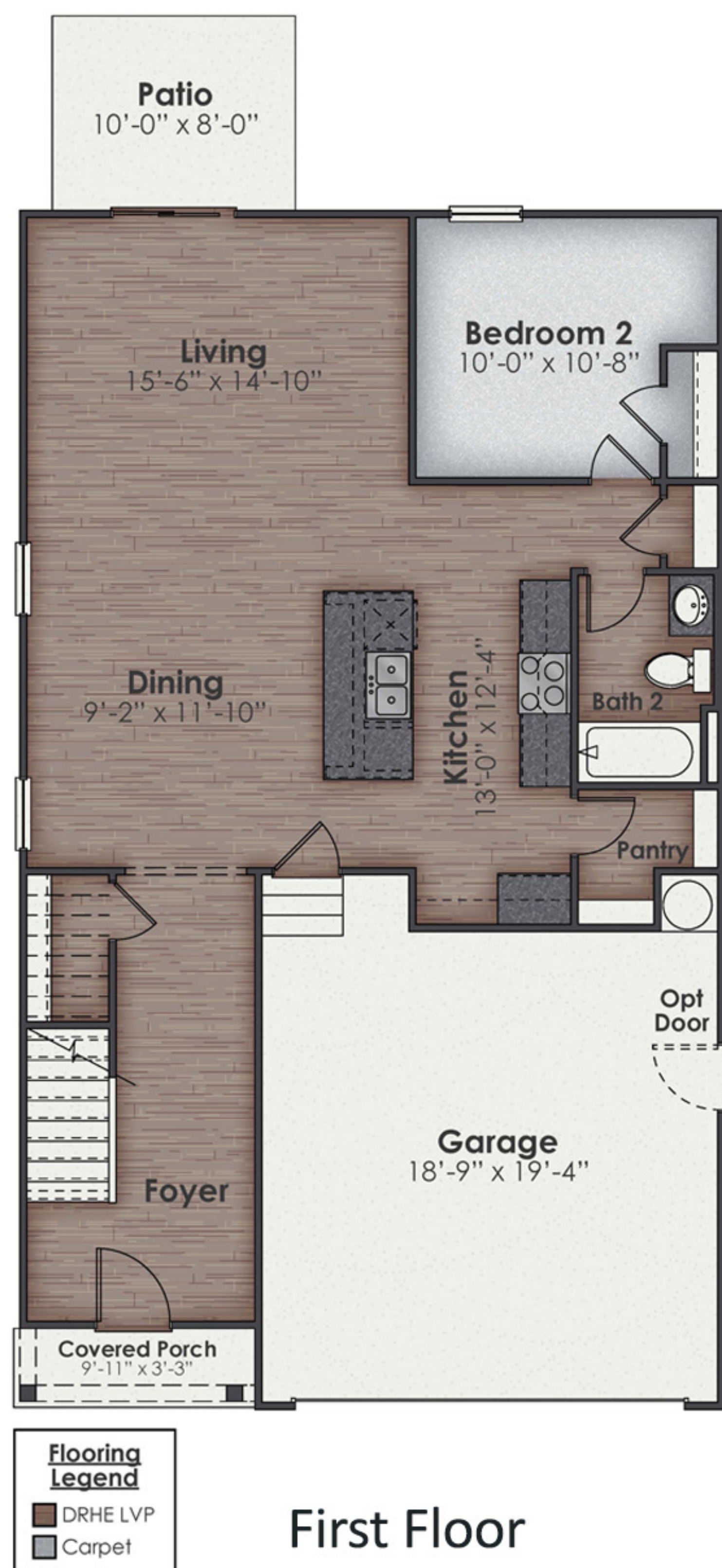
Second Floor



D.R. Horton is an equal housing opportunity builder. Home and community information, including pricing, included features, terms, availability and amenities, are subject to change and prior sale at any time without notice or obligation. Pictures, photographs, features, colors and sizes are approximate for illustration purposes only and will vary from the homes as built. All homes constructed by D.R. Horton, Inc. License #29676.

Woodstock

4 Bedrooms, 3 Baths
2-Car Garage, 2361-2371 Sq. Ft.



Elevations

3-4 Bedrooms, 2-3 Baths
2- Car Garage, 1883-2371 Sq. Ft.



Home is CONNECTED

All of our homes include D.R. Horton's Home is Connected® package, an industry leading suite of smart home products that keeps homeowners connected with the people and place they value the most. The technology allows homeowners to monitor and control their home from the couch or across the globe. Control the thermostat, front door light and lock, and video doorbell from your smartphone or with voice commands to Alexa!



THE PRESERVE
AT TIDEWATER

Enjoy panoramic views from our waterfront boardwalk, where you can also fish and launch your kayak. Take advantage of the on-site amenities like the community pool and clubhouse, perfect for hosting get-togethers!

MODEL AND COMMUNITY



POOL AND PAVILION



WATERFRONT BOARDWALK



Karen Evans, Internet Sales Specialist | 910-877-8376 | wilmingtoninfo@drhorton.com
Sales Model at 201 Laridae Court, Sneads Ferry NC 28460



D.R. Horton is an Equal Housing Opportunity Builder. The photos you see here are for illustration purposes only, interior and exterior features, options, colors and selections will differ. All homes constructed by D.R. Horton, Inc. License #29676.

AMENITIES

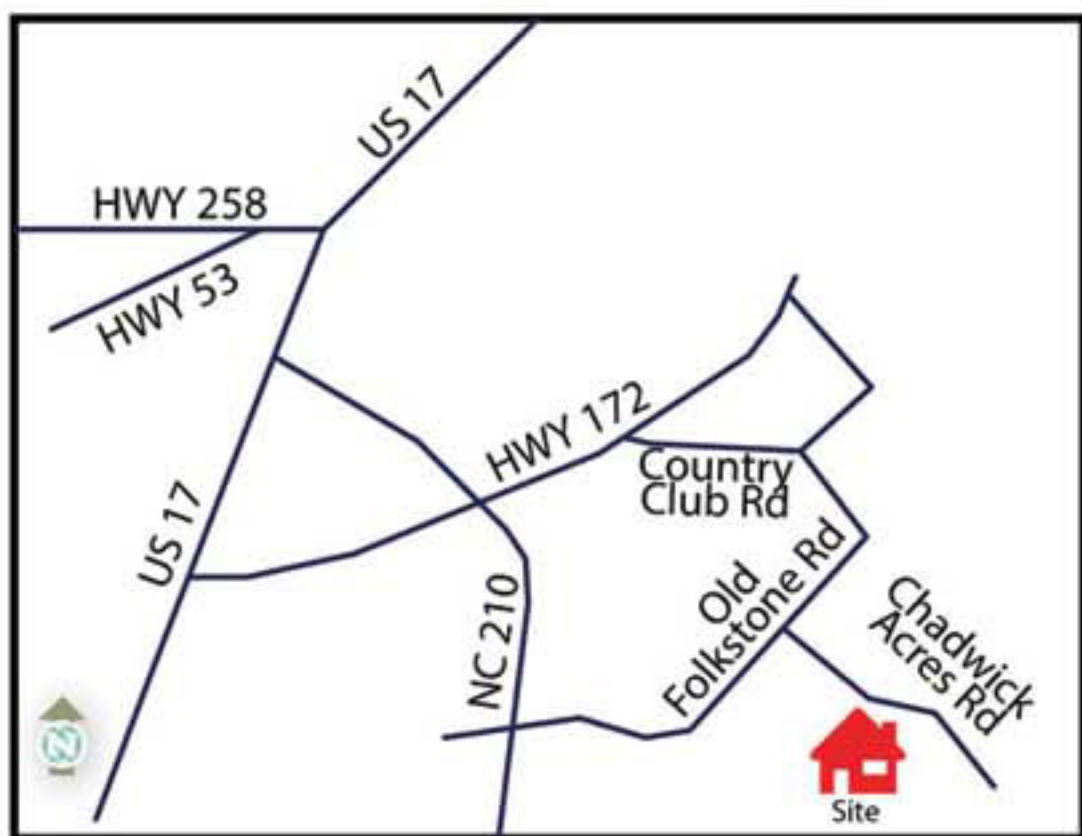
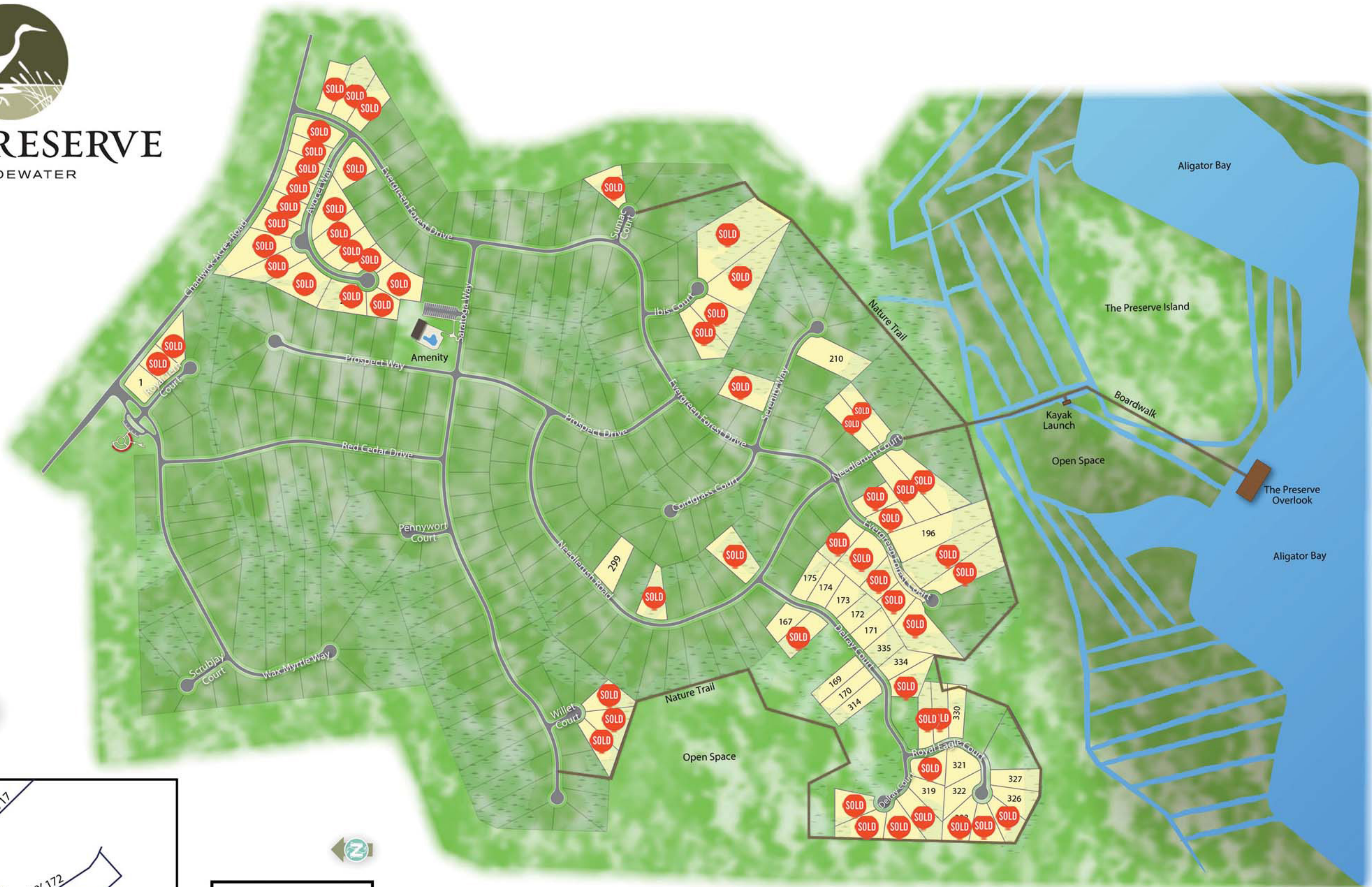


Residents will feel like they're on vacation when they splash in the neighborhood swimming pool, lounge on the spacious sundeck and prepare a delicious meal in the outdoor grilling kitchen. Pier and Kayak/Canoe Launch.

HOMESITES



THE PRESERVE
AT TIDEWATER



Map is for presentation purposes only. Not drawn to scale.