



764 Queens Creek Rd,  
Hubert, NC 28539

**910-390-1288**

[wilmingtoninfo@drhorton.com](mailto:wilmingtoninfo@drhorton.com)



Welcome to Surfside Landing in Huber NC. You will be centrally located and within minutes to Camp Lejeune, shopping and restaurants. The community amenities include a pool, cabana with kitchen and a walking trail. Towne Pointe is also within minutes of beautiful North Carolina beaches, shopping, banks, churches, public golf courses and much more, all surrounded by the natural beauty that has been so well preserved.

We will offer a selection of single-family homes. These beautiful homes feature granite countertops, stainless steel appliances, Home is Connected smart home technology and a variety of standard included features!

**D·R·HORTON®**  
*America's Builder*



[drhorton.com/wilmington](http://drhorton.com/wilmington)

D.R. Horton is an Equal Housing Opportunity Builder. Home and community information, including pricing, included features, terms, availability and amenities, are subject to change and prior sale at any time without notice or obligation. Pictures, photographs, colors, features, and sizes are for illustration purposes only and will vary from the homes as built. Square footage dimensions are approximate. Buyer should conduct his or her own investigation of the present and future availability of school districts and school assignments. All homes constructed by D.R. Horton, Inc. License #29676.



## The Darby

4 Bedroom, 2 Bathroom  
2-Car garage | 1,882 sq/ft



Darby A



Darby C



Forrester E



**D.R. HORTON**  
America's Builder

*Home is*  
CONNECTED

All of our homes include D.R. Horton's Home is Connected package, in industry leading suite is smart home products that keeps homeowners connected with the people and place they value the most. The technology allows homeowners to monitor and control their home from the couch or across the globe. Control the thermostat, front door light and lock, and video doorbell from your smartphone or with voice commands to Alexa!

# The Tillman

5 Bedroom, 3.5 Bathroom  
2-Car garage | 3,221 sq/ft



Tillman C



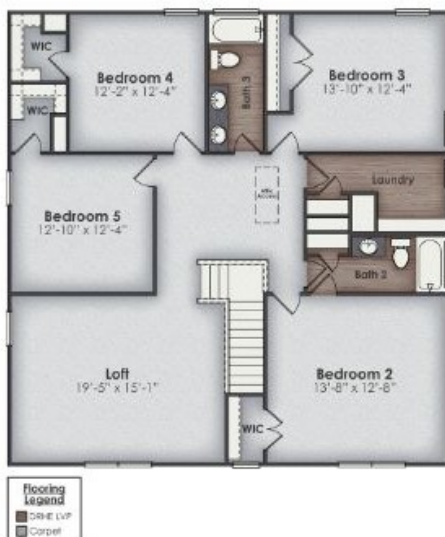
Tillman E

# The Woodstock

4 Bedroom, 3 Bathroom  
2-Car garage | 2,361 sq/ft



Woodstock B





# Amenities



Situated just off 24 South towards Swansboro. Emerald Isle is just a short drive away, providing more options for beaches, dining and entertainment.

# Homesites



**SURFSIDE  
LANDING**



Map is for representation purposes only. Not drawn to scale.