



6460 Zoysia Way  
Wilmington, NC 28429

910-519-8599

WilmingtonInfo@drhorton.com

Thoughtfully-designed, energy efficient, flexible floor plans that focus on today's family lifestyles



Sidbury Station inspires a lifestyle where family, community and the great outdoors all come together harmoniously to help create a foundation for better living. The community is designed to be a neighborly place where families can enjoy a strong sense of community pride and togetherness. Residents will enjoy a resort style swimming pool, clubhouse with fitness room, fire pit area, multi-game court, discovery playground and amenity pond with dock. Start living the life you have always dreamed of!

**D·R·HORTON®**  
*America's Builder*  
[www.drhorton.com/wilmington](http://www.drhorton.com/wilmington)



Home and community information, including pricing, included features, terms, availability and amenities, are subject to change and prior sale at any time without notice or obligation. ©2022. D.R. Horton, America's Builder. All Homes Constructed by D.R. Horton, Inc., License #29676.



# Aria

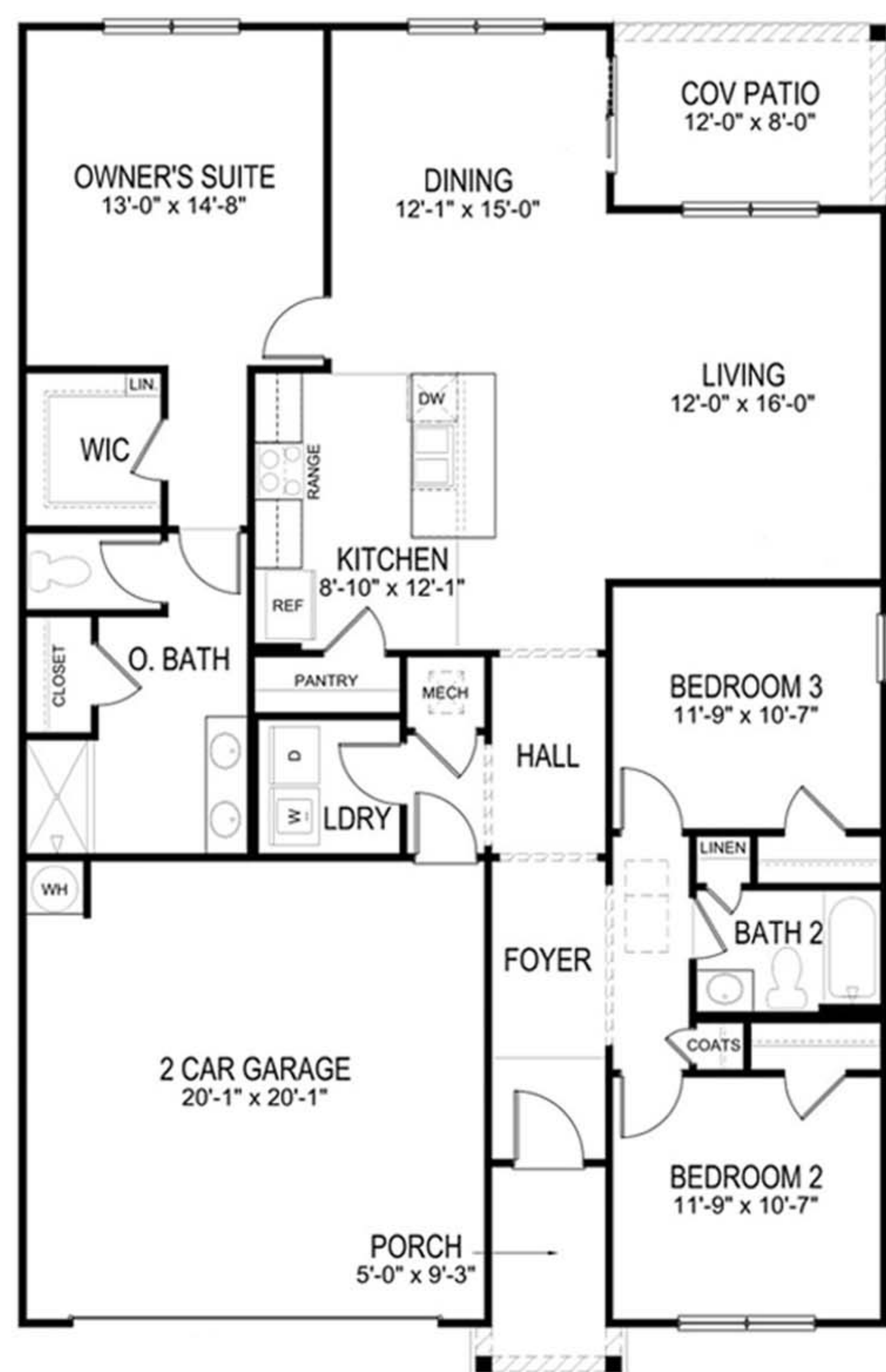
3 Bedrooms, 2 Baths  
2-Car Garage, 1618 Sq. Ft.



Elevation A



Elevation B



# Cali

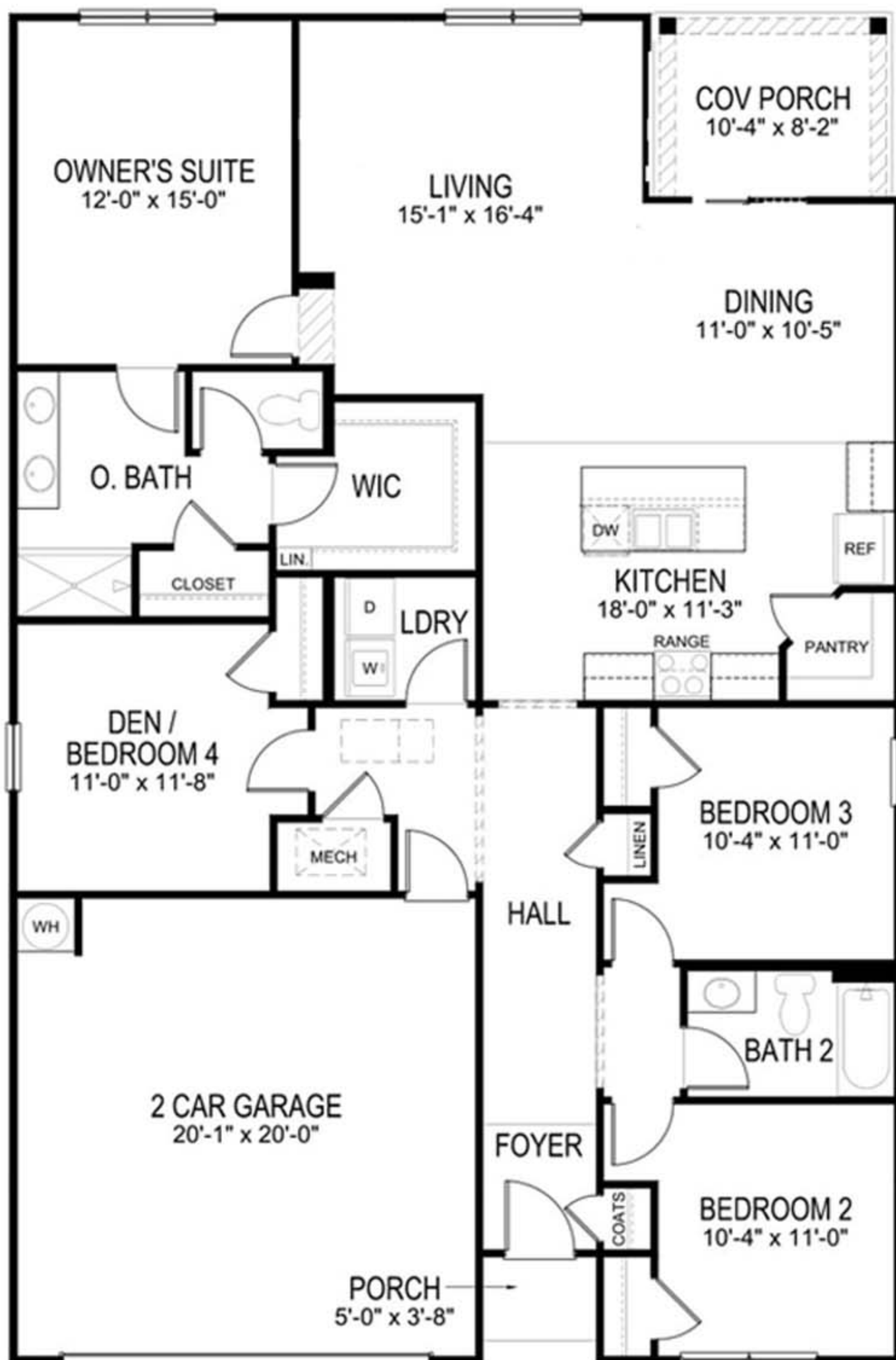
4 Bedrooms, 2 Baths  
2-Car Garage, 1774 Sq. Ft.



Elevation A



Elevation B



# Arden

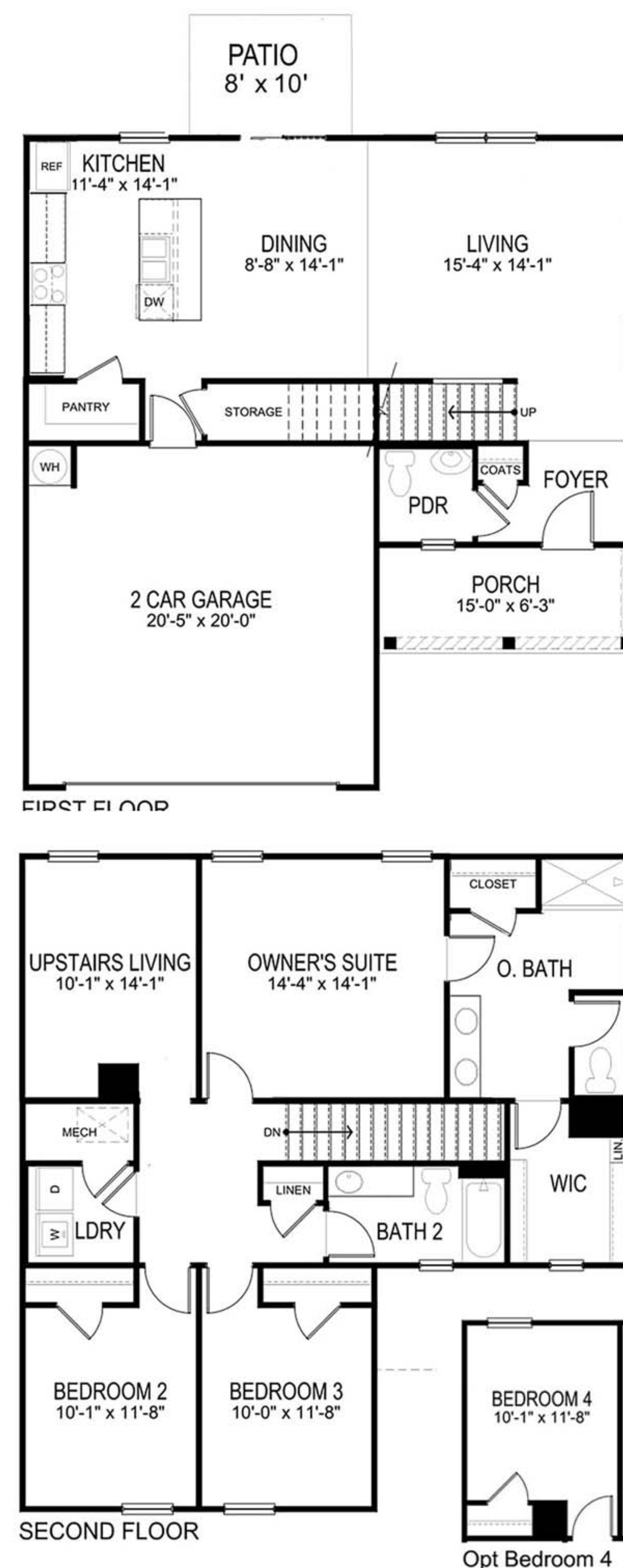
3 Bedrooms, 2.5 Baths  
2-Car Garage, 1885 Sq. Ft.  
Optional: Bedroom 4



Elevation A



Elevation B



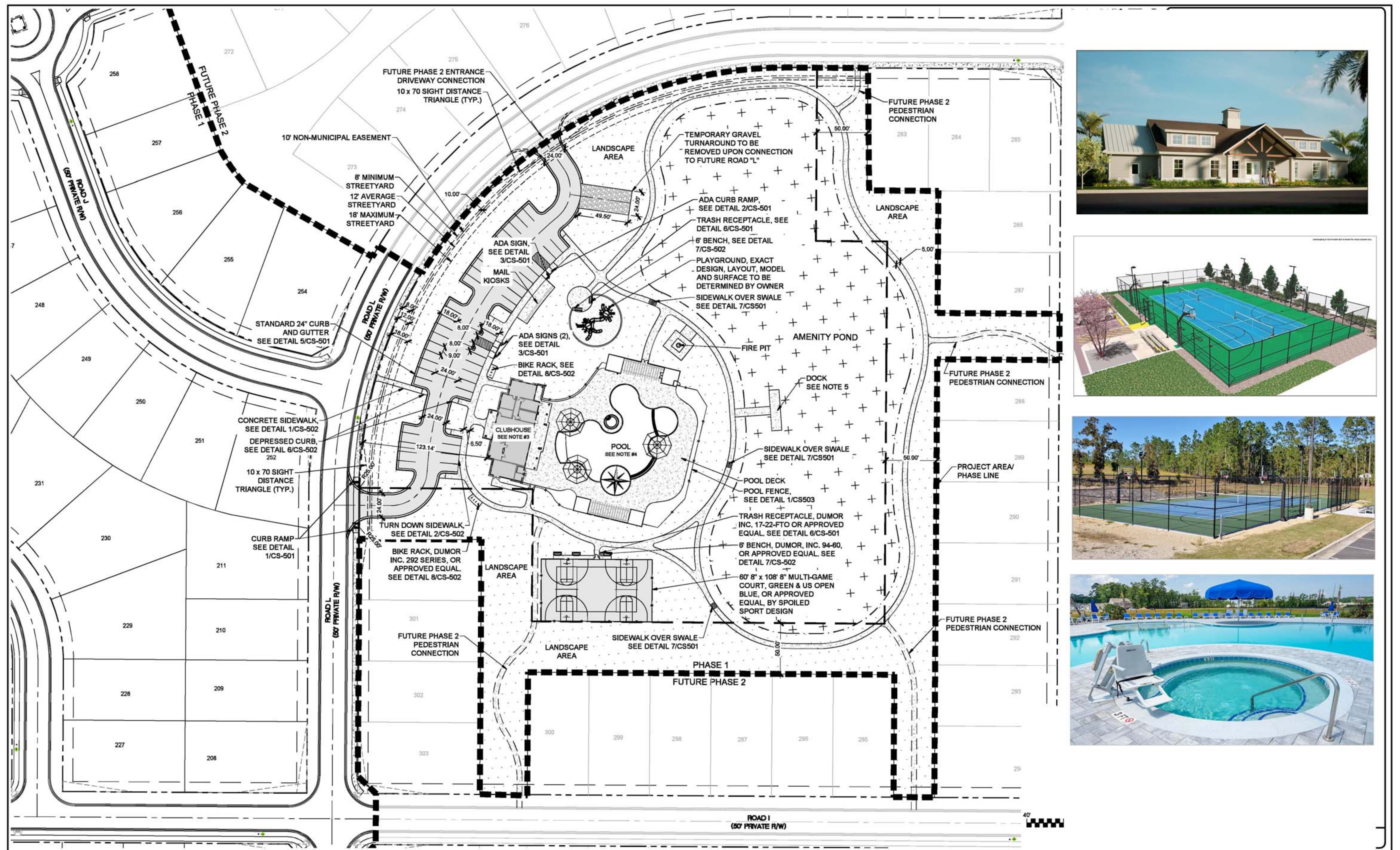
All of our homes include D.R. Horton's Home is Connected® package, an industry leading suite of smart home products that keeps homeowners connected with the people and place they value the most. The technology allows homeowners to monitor and control their home from the couch or across the globe. Control the thermostat, front door light and lock, and video doorbell from your smartphone or with voice commands to Alexa!



# Proposed Amenity Site

Pool, Club House, Exercise - Fitness, Playground, Fire Pit, Multi-Game Court and Pond with Dock

All images and designs depicted herein are artist's conceptual renderings, which are based upon preliminary development plans, and are subject to change without notice in the manner provided in the offering documents. All such materials are not to scale and are shown solely for illustrative purposes.



D.R. Horton is an equal housing opportunity builder. Home and community information, including pricing, included features, terms, availability and amenities, are subject to change and prior sale at any time without notice or obligation. Pictures, photographs, features, colors and sizes are approximate for illustration purposes only and will vary from the homes as built. All homes constructed by D.R. Horton, Inc. License #29676.



# AREA ATTRACTIONS



Whether you want to shop, dine or be entertained there is plenty to do around the area, but if you just want to get away from the daily bustle and relax, we will offer just that, a daily escape to recharge. Located a short drive to local beaches, cape fear riverwalk and all that Downtown Wilmington has to offer.

# HOMESITES

