



The Grove at Blake Farm

48 Croatan Drive
Wilmington, NC 28411

910.714.9542

WilmingtonInfo@drhorton.com

Thoughtfully-designed, flexible floorplans that focus on today's family lifestyles.



Welcome to The Grove at Blake Farm! A highly sought-after location with exceptional value! This one-of-a-kind community will offer 6 uniquely designed one-and two-story floorplans that include 2-5 bedrooms, 2-3 baths and range from 1,045 to 2,511 square feet. All homes will feature an open concept design, stainless steel appliances, granite kitchen countertops, ceramic tile flooring, Home is Connected® smart home technology package plus so much more! The combination of location, value, amenities and included features will make Blake Farm the premiere choice for new home buyers

D·R·HORTON[®]
America's Builder

www.drhorton.com/wilmington



Home and community information, including pricing, included features, terms, availability and amenities, are subject to change and prior sale at any time without notice or obligation. ©2023. D.R. Horton, America's Builder. All Homes Constructed by D.R. Horton, Inc., License #29676.

Perry

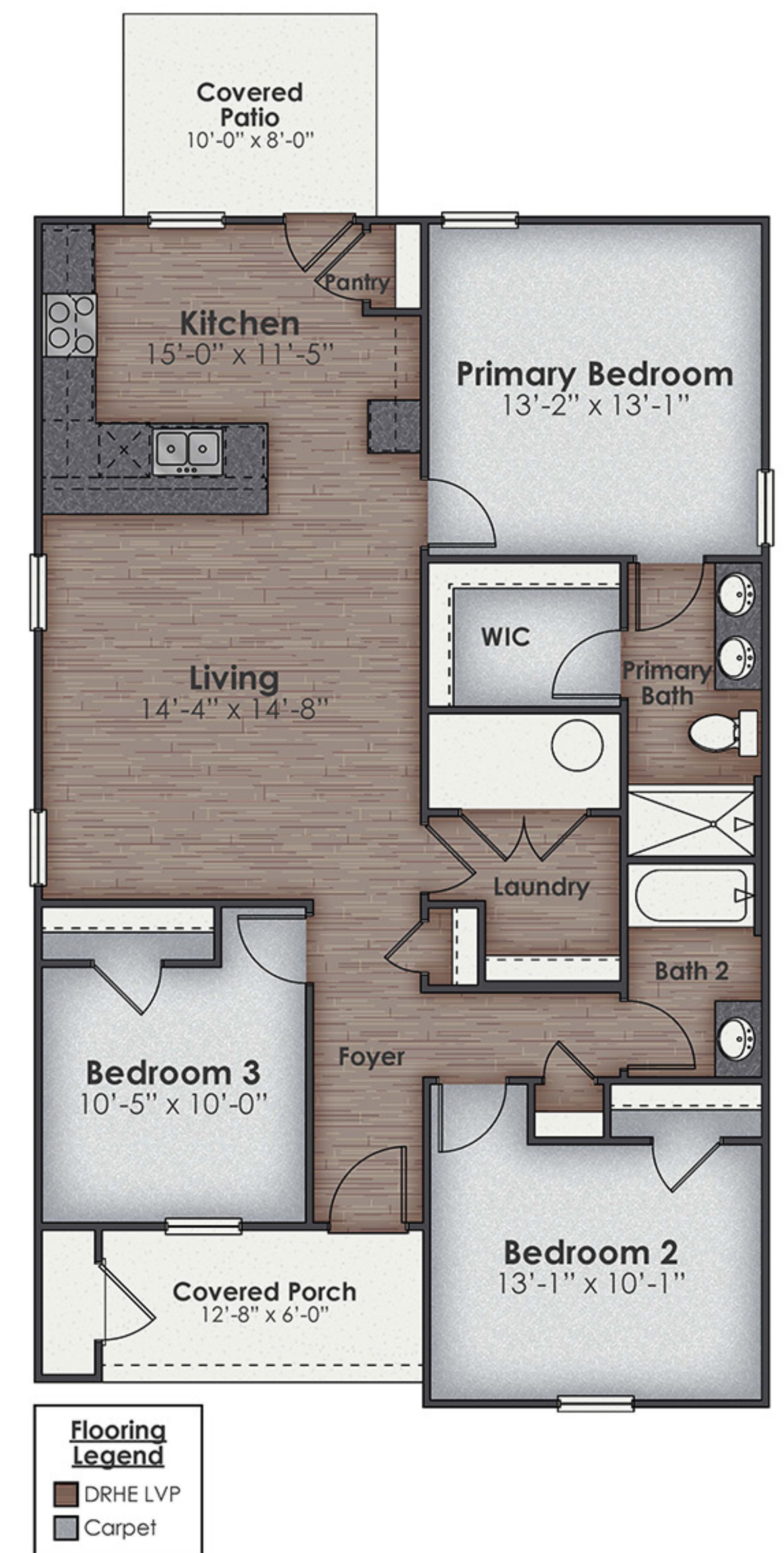
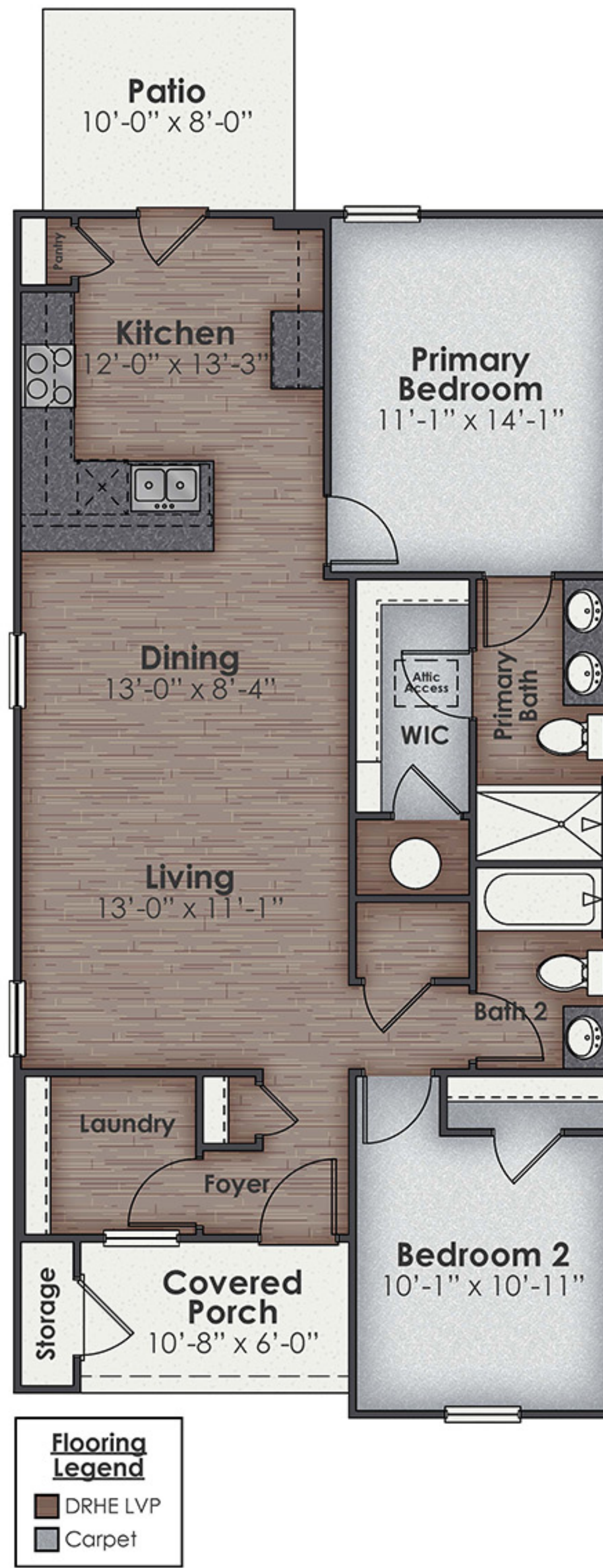
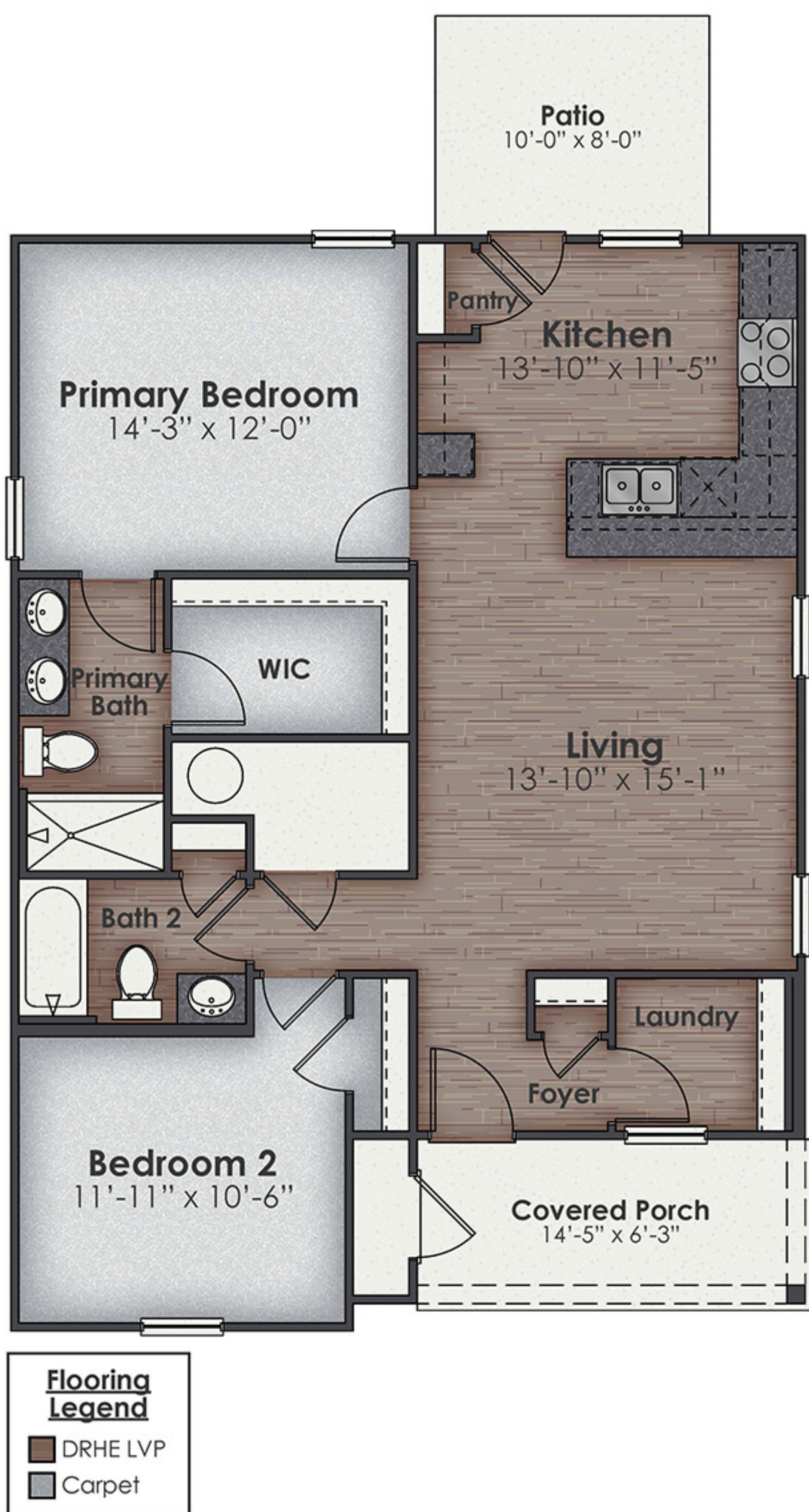
2 Bedrooms, 2 Baths
1045 Sq. Ft., No Garage

Delaney

2 Bedrooms, 2 Baths
1059 Sq. Ft., No Garage

Lewis

3 Bedrooms, 2 Baths
1256 Sq. Ft., No Garage



 D.R. Horton is an equal housing opportunity builder. Home and community information, including pricing, included features, terms, availability and amenities, are subject to change and prior sale at any time without notice or obligation. Pictures, photographs, features, colors and sizes are approximate for illustration purposes only and will vary from the homes as built. All homes constructed by D.R. Horton, Inc. License #29676.

Aria

3 Bedrooms, 2 Baths
2-Car Garage, 1618 Sq. Ft.

Cali

4 Bedrooms, 2 Baths
2-Car Garage, 1774 Sq. Ft.

Hayden

5 Bedrooms, 3 Baths
2-Car Garage, 2511 Sq. Ft.



Elevation B



Elevation B



Elevation A



Elevation C



Elevation C



Elevation B



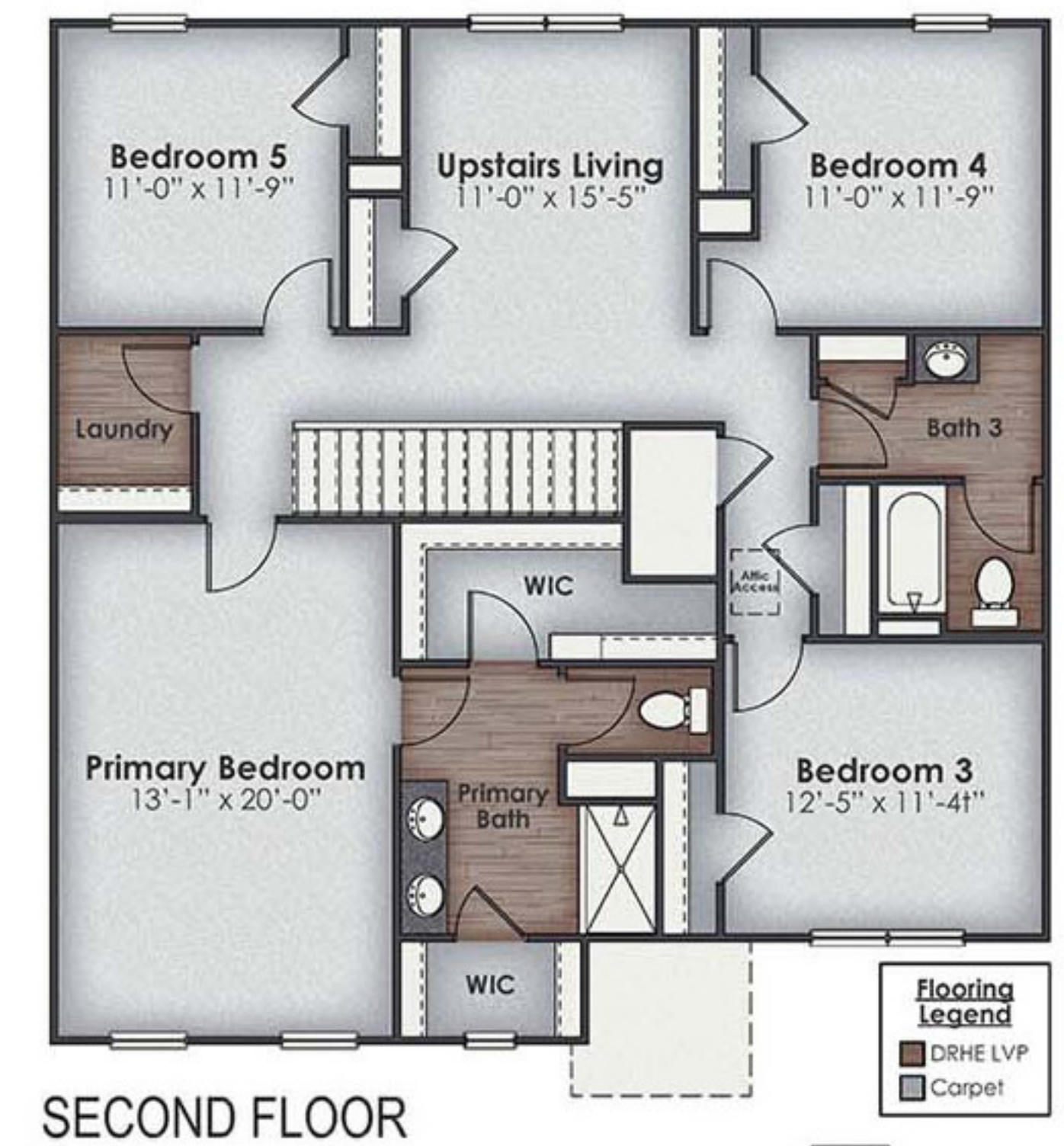
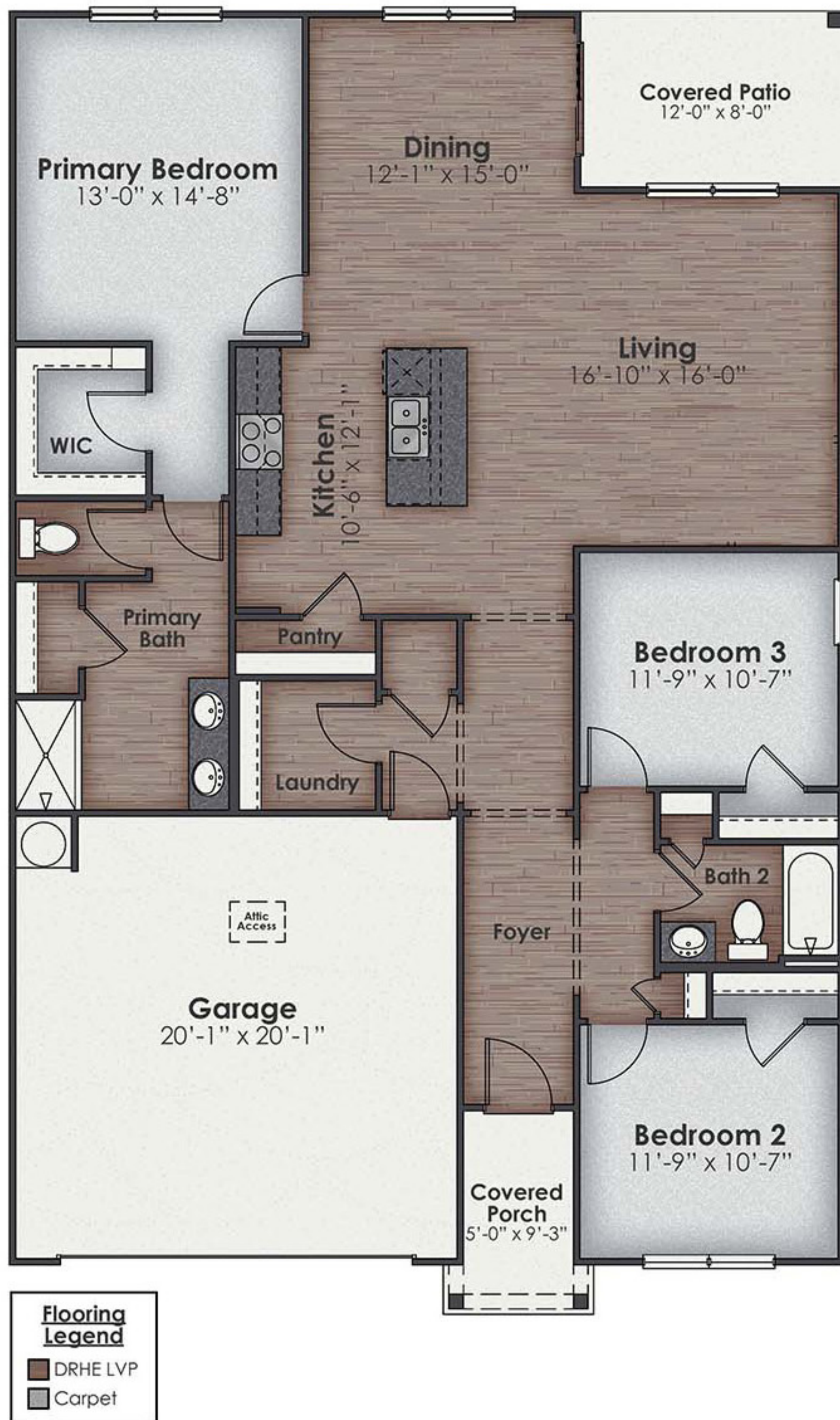
Elevation H



Elevation S



Elevation C



All of our homes include D.R. Horton's Home is Connected® package, an industry leading suite of smart home products that keeps homeowners connected with the people and place they value the most. The technology allows homeowners to monitor and control their home from the couch or across the globe. Control the thermostat, front door light and lock, and video doorbell from your smartphone or with voice commands to Alexa!

AREA ATTRACTIONS



The Cape Fear area is well known for its beautiful beaches, making it a water sports paradise. If you are a boater, Topsail Island, Wrightsville Beach are just minutes away. If you are a golfer, you can find many other world-class golf courses and resorts. Community amenities will include a pool, pool house, pickleball, outdoor kitchen/picnic area, fire pit and playground.

HOMESITES



The Grove
at Blake Farm



Map is for presentation purposes only. Not drawn to scale.