



2051 Bella Point Drive SE
Bolivia, NC 28422
910.565.6524
WilmingtonInfo@drhorton.com

Thoughtfully-designed, flexible floor plans that focus on today's family lifestyles



Welcome to Bella Point! Nestled in the heart of South Brunswick County, this fast-growing area and it is just south of Wilmington and all its attractions, making it a popular destination for those that commute to the city but enjoy living in a more rural small-town setting. Bella Point is specifically designed to provide its residents with the carefree low maintenance lifestyle they desire. This community offers five of our best floor plans and four new cottage plans. Residents will enjoy amenities that include a pool, pool house, fitness room and fire pit. Start living the life you have always dreamed of!

D·R·HORTON®
America's Builder

www.drhorton.com/wilmington



Home and community information, including pricing, included features, terms, availability and amenities, are subject to change and prior sale at any time without notice or obligation. ©2023. D.R. Horton, America's Builder. All Homes Constructed by D.R. Horton, Inc., License #29676.

Macon

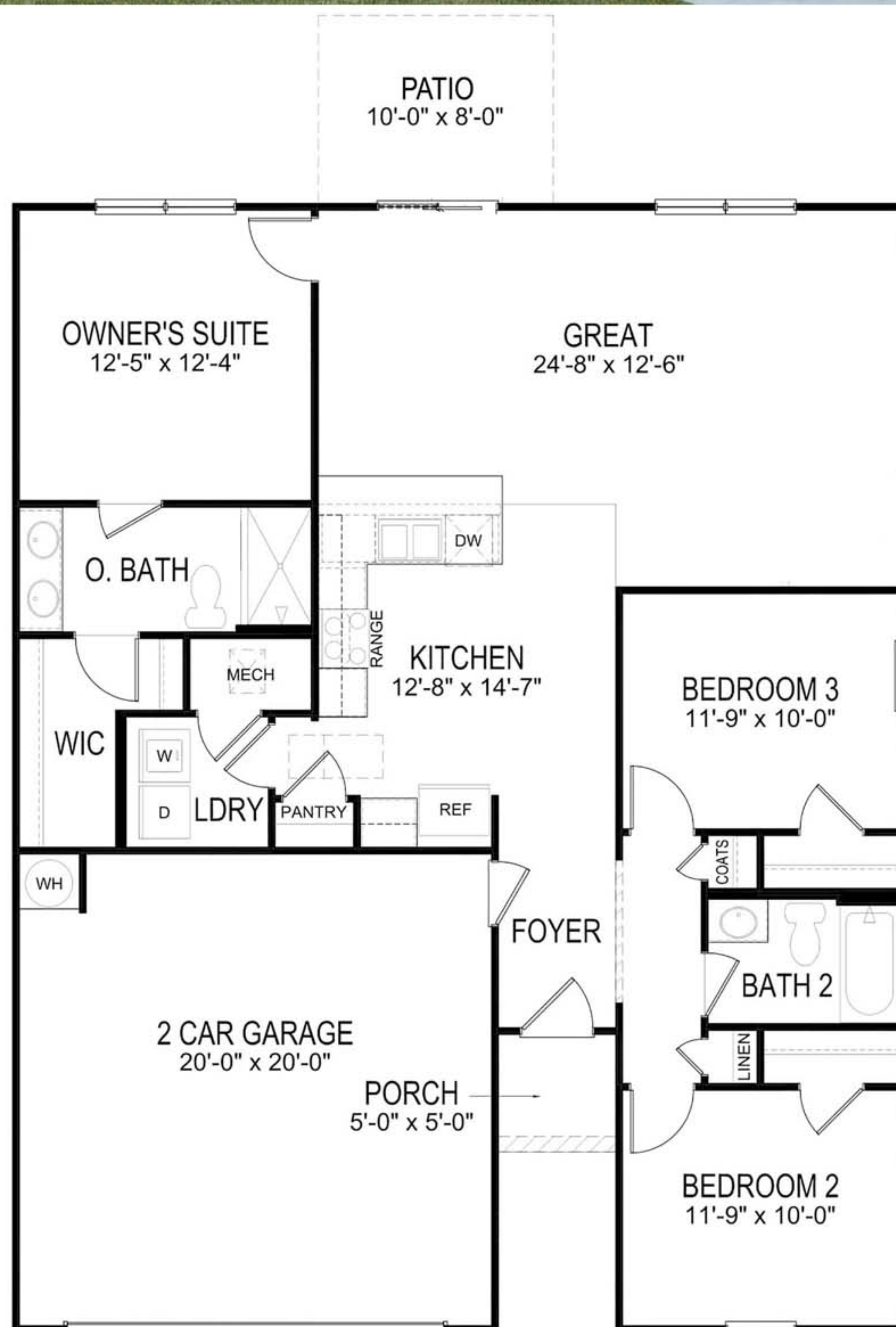
3 Bedrooms, 2 Baths
2-Car Garage, 1343 Sq. Ft.



Elevation A



Elevation B



Aria

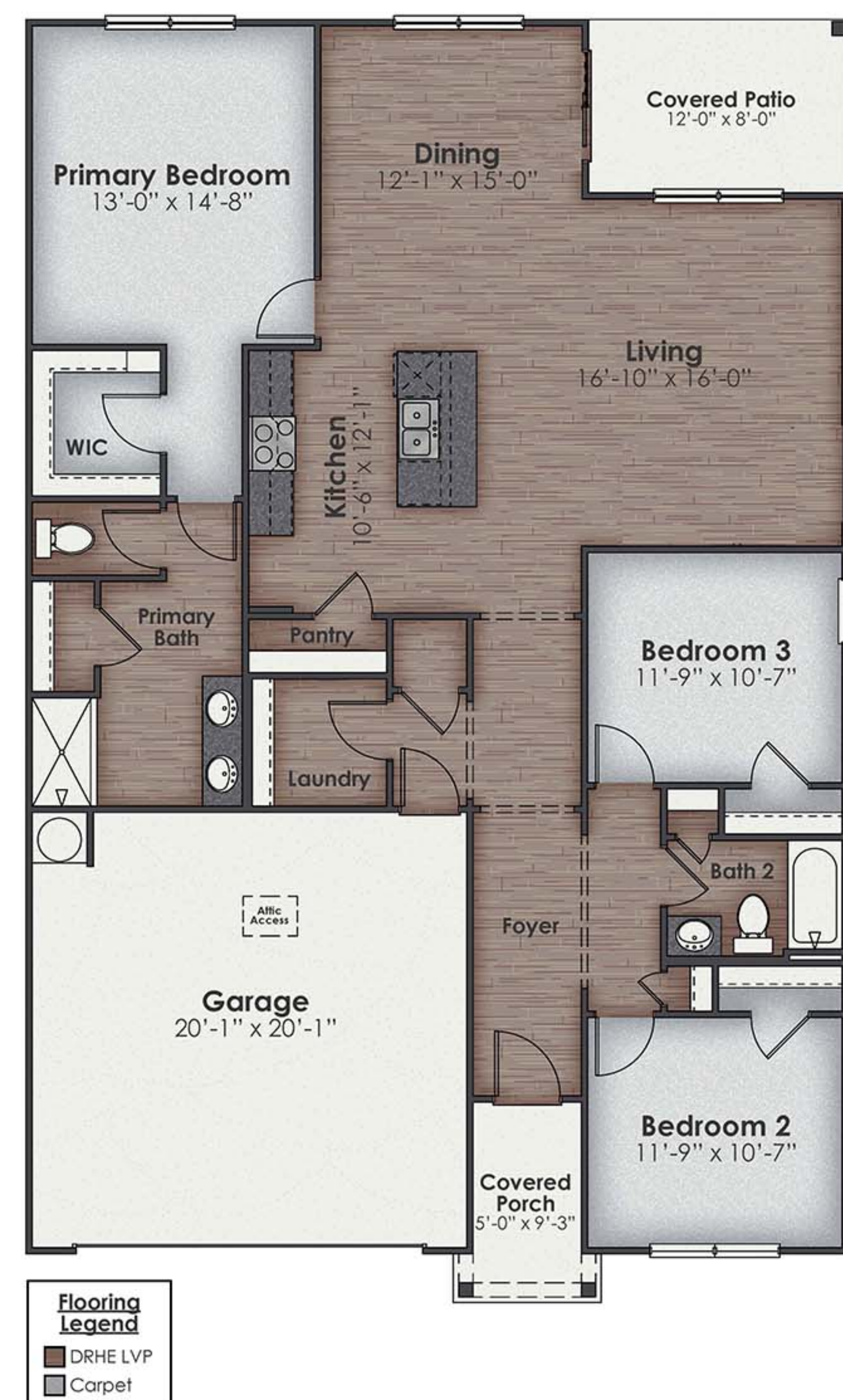
3 Bedrooms, 2 Baths
2-Car Garage, 1618 Sq. Ft.



Elevation A



Elevation B



All of our homes include D.R. Horton's Home is Connected® package, an industry leading suite of smart home products that keeps homeowners connected with the people and place they value the most. The technology allows homeowners to monitor and control their home from the couch or across the globe. Control the thermostat, front door light and lock, and video doorbell from your smartphone or with voice commands to Alexa!

Cali

4 Bedrooms, 2 Baths
2-Car Garage, 1774 Sq. Ft.



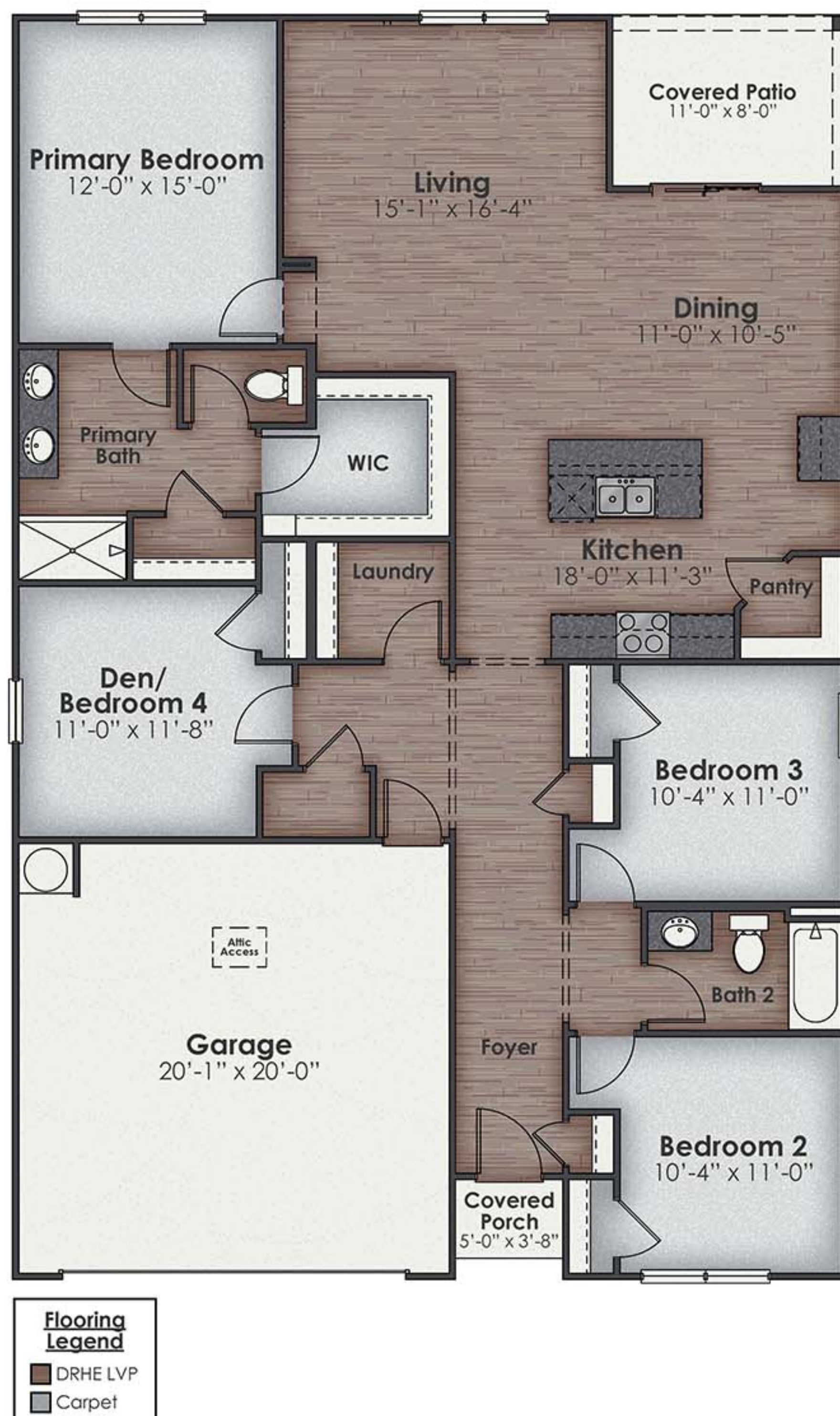
Elevation A



Elevation B



Elevation S



Hayden

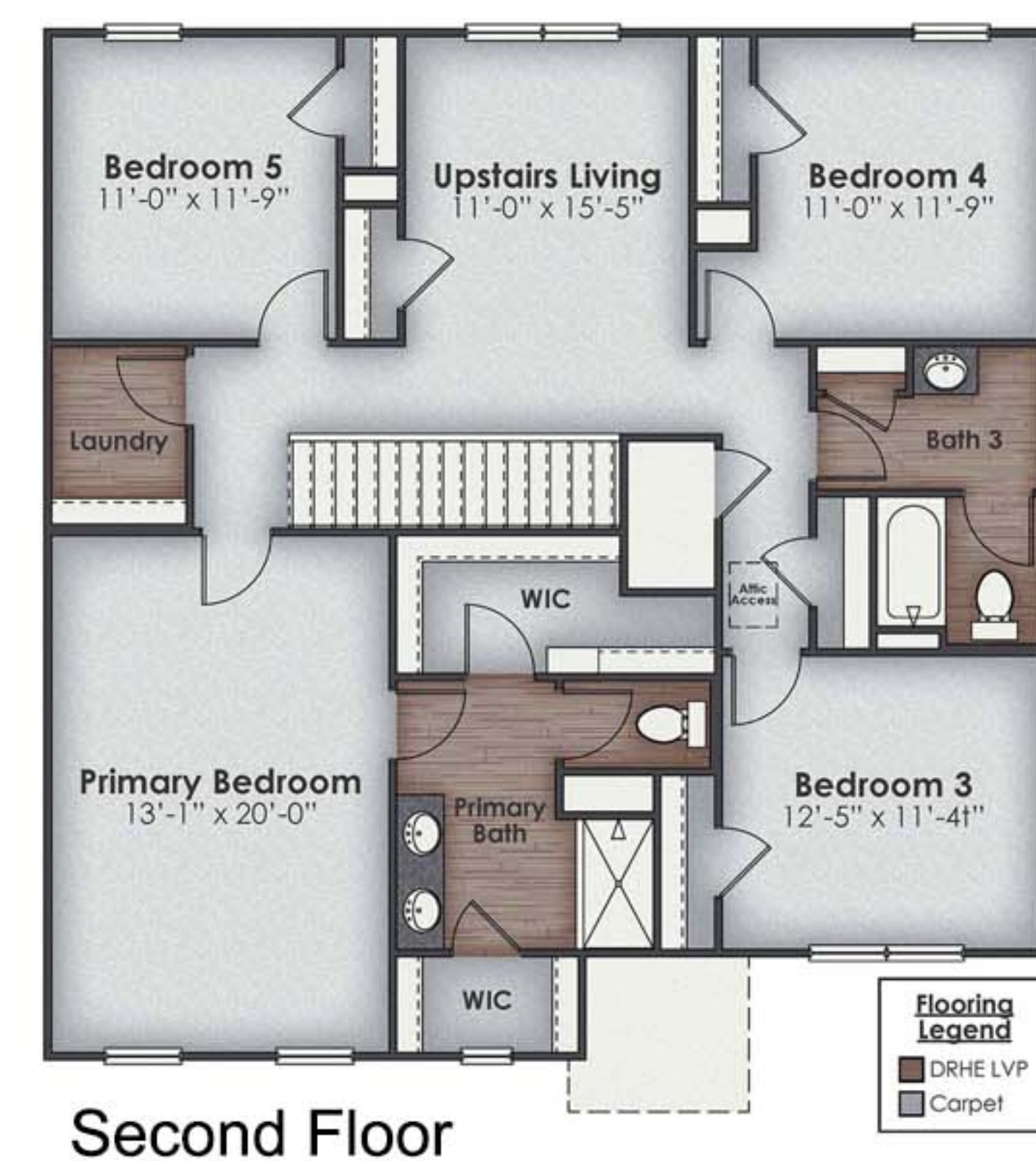
5 Bedrooms, 3 Baths
2-Car Garage, 2511 Sq. Ft.



Elevation A



Elevation B



Second Floor



First Floor



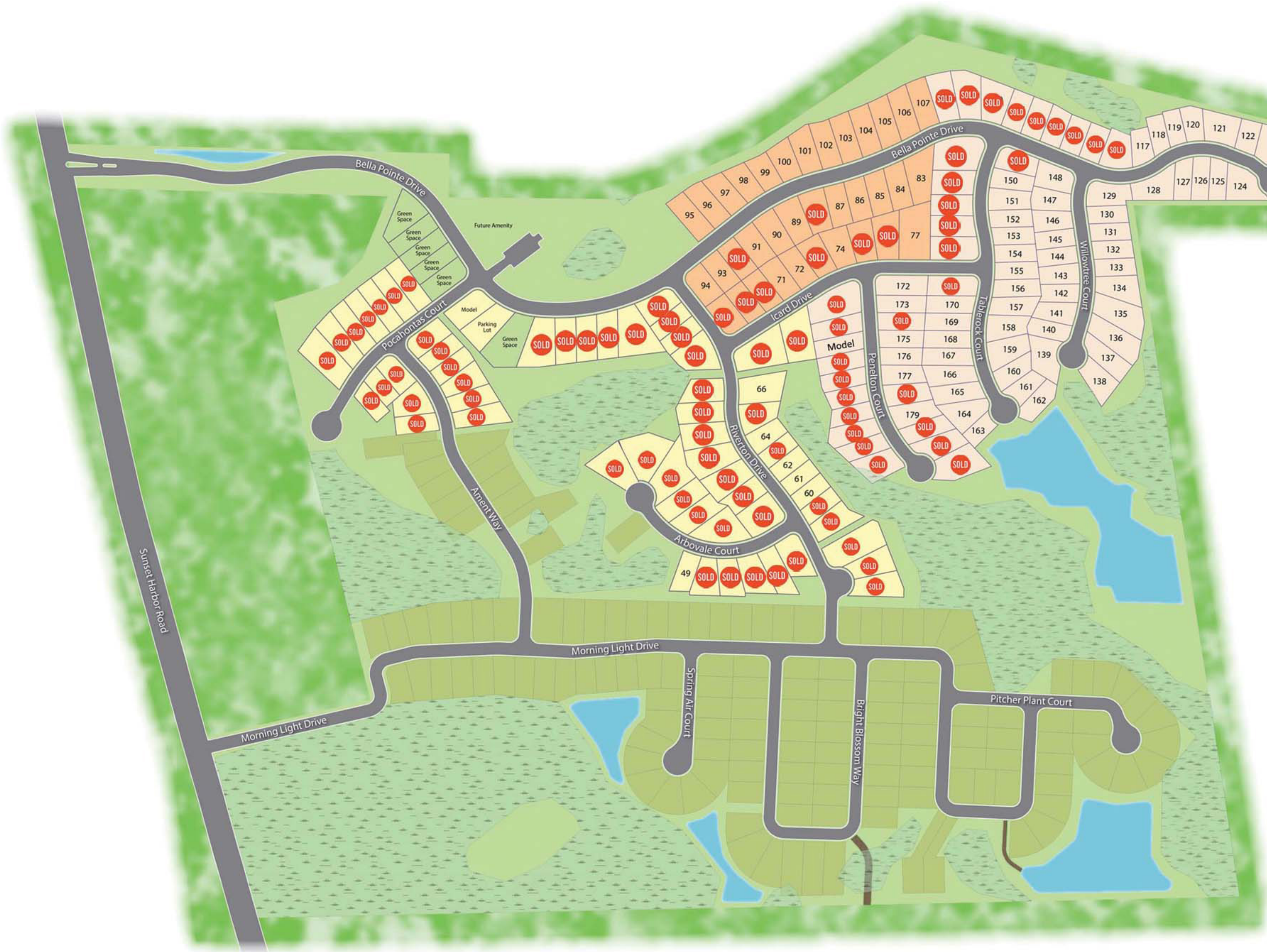
D.R. Horton is an equal housing opportunity builder. Home and community information, including pricing, included features, terms, availability and amenities, are subject to change and prior sale at any time without notice or obligation. Pictures, photographs, features, colors and sizes are approximate for illustration purposes only and will vary from the homes as built. All homes constructed by D.R. Horton, Inc. License #29676.

AREA ATTRACTIONS



South Brunswick County is well known for its beautiful beaches, making it a water sports paradise. If you are a boater, Sunset Harbor Boat Ramp is just 6 minutes away. If you are a golfer, you can find many other world-class golf courses and resorts. Community amenities will include Pool, Pool House, Fire Pit and Fitness Room.

HOMESITES



Legend

DRHE

Cottages

Phase 3

