



D·R·HORTON
America's Builder

Sebastian & Isles

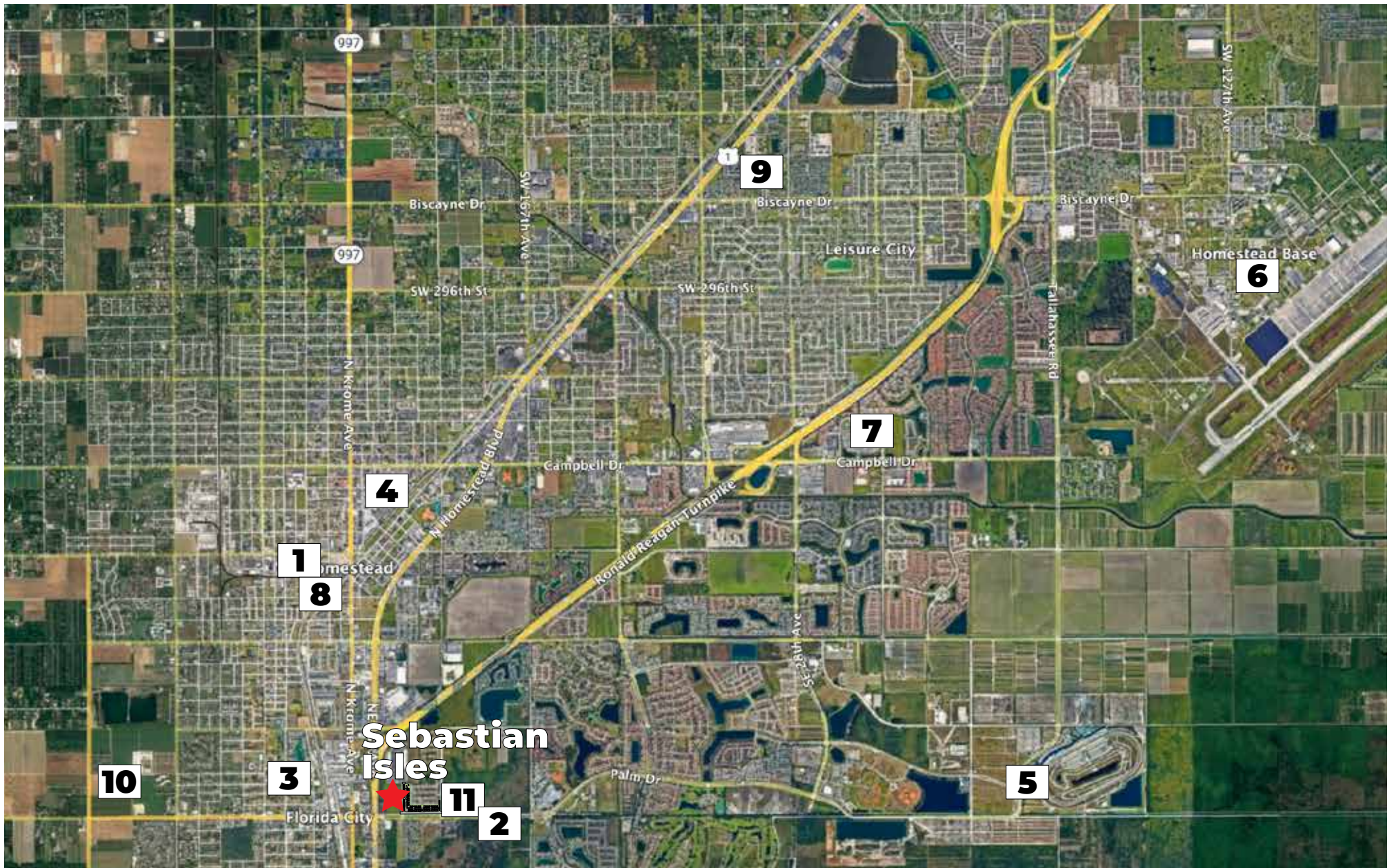
TOWNHOMES
Express SeriesSM
Florida City



D·R·HORTON
America's Builder

Sebastian  Isles

AMENITIES
Coming Soon
Tot Lots & Picnic Areas



NEIGHBORHOOD Map

1. Homestead Middle School
2. Homestead Senior High
3. Florida City Elementary
4. Miami-Dade College
5. Homestead Miami Speedway
6. Homestead Air Reserve Base

7. Homestead Hospital
8. Homestead Station Shopping Mall
9. Coral Castle
10. Post Office
11. Florida Keys Outlet Marketplace



D·R·HORTON
America's Builder

Sebastian  Isles

INCLUDED
Features

Architectural Artistry

- Reinforced concrete monolithic foundation slab
- Masonry exterior walls
- Professionally engineered roof with hurricane clips and bracing
- IKO dimensional roof shingles
- Architecturally designed exterior elevations available
- Fully sodded homesites with professionally designed landscaping
- Hunter® automatic irrigation system
- Paver entry walkway
- Therma Tru® insulated fiberglass front door
- Sliding glass doors
- Hurricane storm panels
- Exterior weather proof outlets (G.F.I.)
- Exterior hose bib connection

Heart of the Home

- Knockdown textured finish on walls and ceilings
- Jeld-Wen® 2-panel interior doors
- Maxim® light fixtures
- Kwikset® keyed entry handleset
- Vinyl-coated ventilated shelving in all closets
- Daltile® 18" x 18" ceramic tile flooring in all first floor living areas (excluding bedrooms)
- Mohawk® luxurious wall-to-wall carpeting (installed over dense padding)
- Sherwin Williams® bright white interior paint

A Gourmet's Delight

- Whirlpool® stainless steel appliances:
 - 20 cu. ft. refrigerator
 - Range oven with microwave above
 - Built-in dishwasher
- Moen® single lever faucet
- Moen® garbage disposal
- Sterling double bowl stainless steel sink in kitchen
- Quality crafted custom designed cabinets with 30" uppers
- Puck lights in the Kitchen

Thoughtful Details

- Uponor PEX® plumbing water lines
- Tankless water heater
- Interior washer/dryer hook-up
- R-30 blown insulation in all attic spaces above living areas
- R-4.1 insulated exterior masonry walls
- Energy efficient central A/C and heating system

Bathroom Conveniences

- Adult-height custom designed cabinets
- Full vanity mirrors
- Daltile® 12" x 12" ceramic tile floors & shower walls
- Elongated commodes throughout
- Moen® bathroom faucets throughout
- Broan® exhaust fans

Technology Standard Features

- Square D® surge protection on all major appliances
- Pre-wired for ceiling fans with switches in all bedrooms and great room
- High speed structured wiring for 4-line phone, video and computer Includes CAT-5 data lines and RG-6 quad shield coaxial cable (per plan)
- BRK® electrical smoke detectors with battery back-up
- BRK® carbon monoxide detector
- Deako® switches and Cooper® outlets throughout
- Square D® electrical panel with circuit breakers

Home Is® Connected

- Qolysys IQ Panel II 7" HD Touchscreen with built-in 5MP camera
- ADC 750 WiFi video doorbell
- Echo Pop™ with Alexa
- Z Wave™ Thermostat
- Z Wave™ Light Switch
- Z Wave™ Door Lock
- Security System w/ 1 motion detector and 2 door contacts

D.R. Horton's Personal Touch

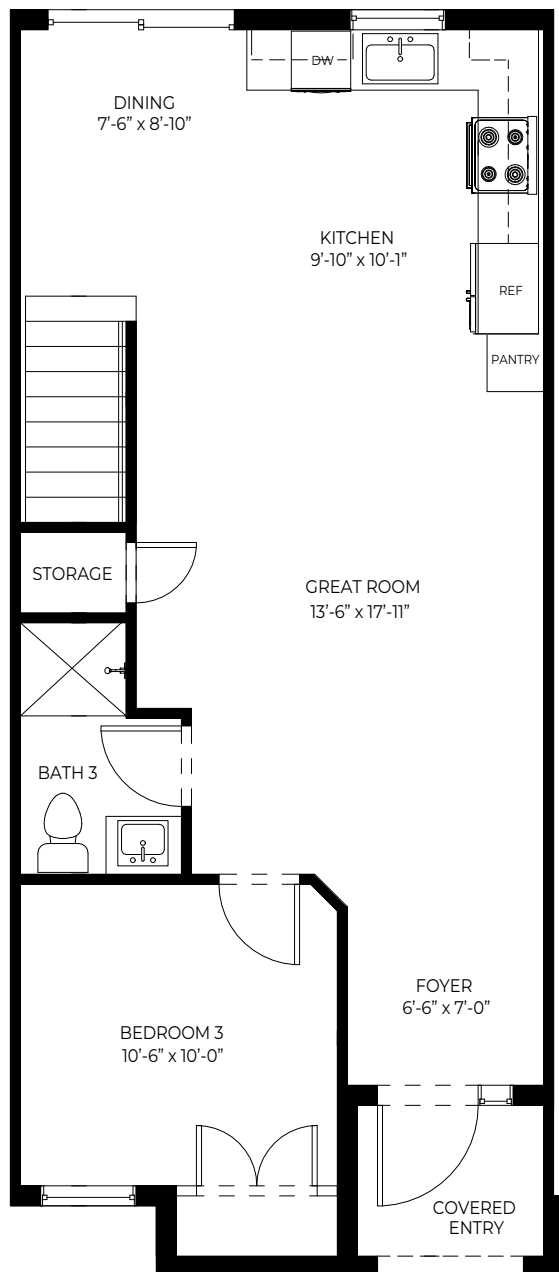
- Personalized New Homeowner Orientation
- D.R. Horton 1-Year Warranty
- 10-Year RWC™ warranty to protect your investment
- 10-Year Carrier® limited warranty
- 3rd party home inspections



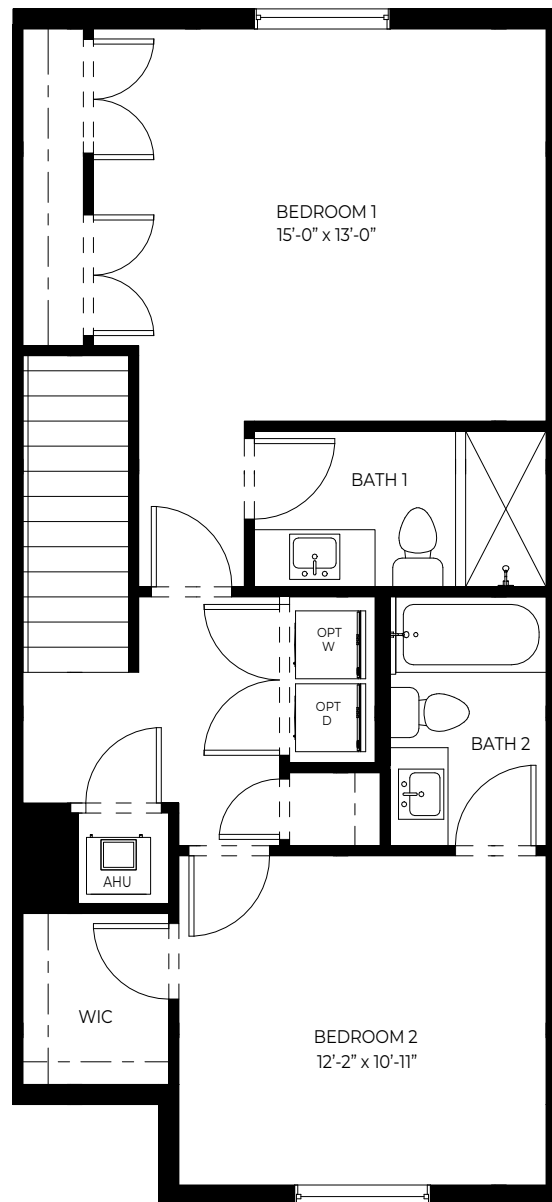
D·R·HORTON
America's Builder

Sebastian  Isles

FLOORPLANS



FIRST FLOOR



SECOND FLOOR

D·R·HORTON
America's Builder

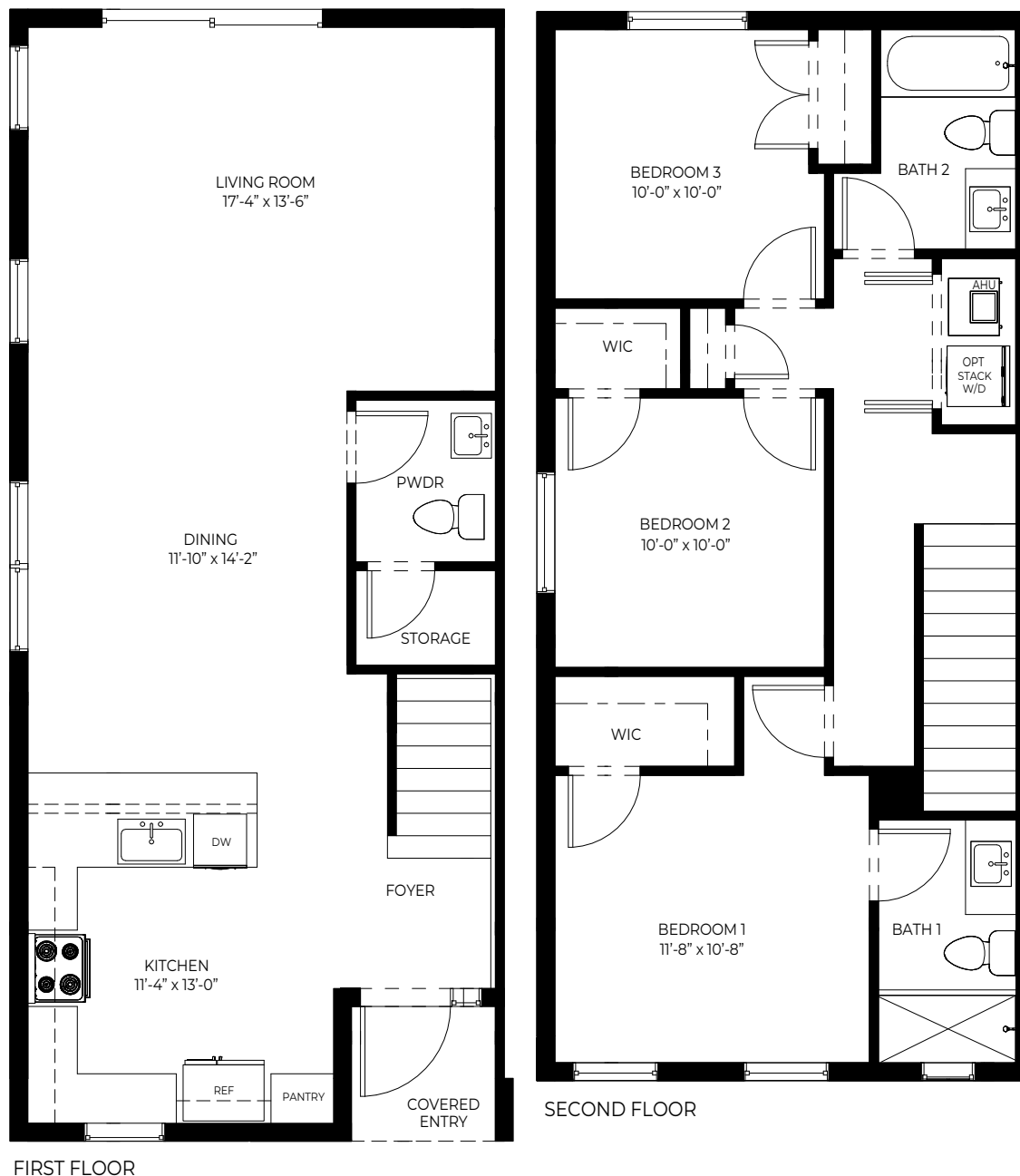
Sebastian  Isles



BOARDWALK

3 Bedrooms
3 Bathrooms

1st Floor A/C Sq. Ft.	708
2nd Floor A/C Sq. Ft.	662
Total A/C Sq. Ft.	1,370
Covered Entry	35
Total Sq. Ft.	1,405



PROMENADE

3 Bedrooms
2.5 Bathrooms

1st Floor A/C Sq. Ft.	743
2nd Floor A/C Sq. Ft.	690
Total A/C Sq. Ft.	1,433
Covered Entry	27
Total Sq. Ft.	1,460

COMMUNITY Siteplan



D·R·HORTON
America's Builder

Sebastian  Isles

786.882.7199 • drhorton.com
409 NE 1st Drive, Florida City, FL 33034

D.R. Horton is equal housing opportunity builder. Home and community information, including pricing, included features, terms, availability and amenities, are subject to change and prior sale at any time without notice or obligation. Pictures, photographs, features, colors, drawings, floor plans, square footages and sizes are approximate for illustration purposes only and will vary from the homes as built. All drawings are the artist's concept. Buyer should conduct his or her own investigation of the present and future availability of school districts and school assignments. D.R. Horton has no control or responsibility for any changes to school districts or school assignments should they occur in the future. Home Is Connected, A smart home is a convenient home setup where appliances and devices can be automatically controlled remotely from any internet-connected place using a mobile or other networked device. Certified General Contractor License Number CGC05939