



**Jensen Beach**

**D·R·HORTON**  
*America's Builder*

 Sabal Pointe

SINGLE-FAMILY HOMES  
Emerald Series<sup>SM</sup>



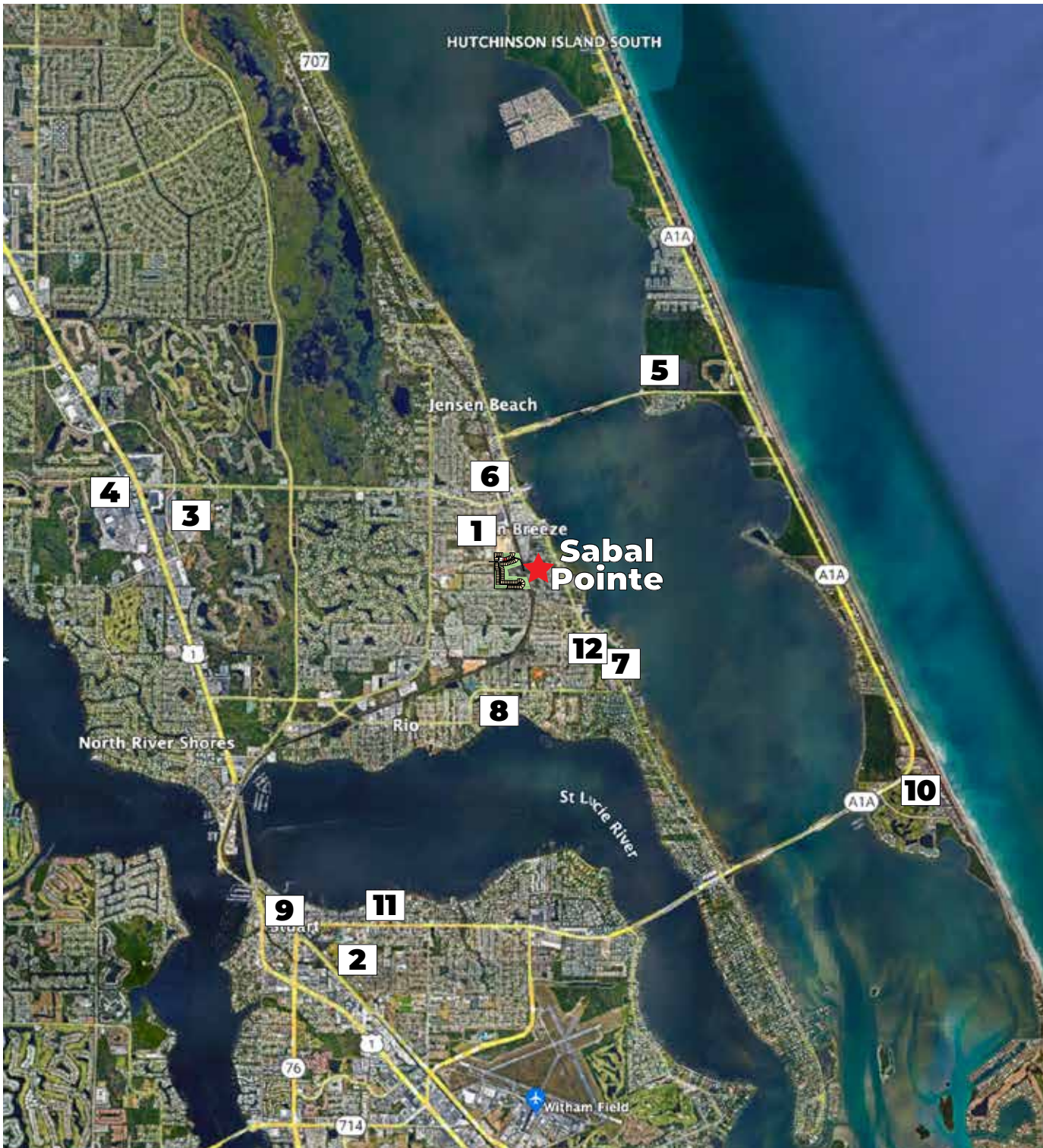


**D·R·HORTON**<sup>®</sup>  
*America's Builder*

 Sabal Pointe

AMENITIES  
Coming Soon  
Pool, Cabana & Controlled Access Entry





## NEIGHBORHOOD Map

1. Jensen Beach Elementary
2. Stuart Middle
3. Jensen Beach High
4. Treasure Coast Square Mall
5. Jensen Beach Park & Public Beach
6. Downtown Jensen Beach
7. Indian Riverside Park
8. Langford Park
9. Downtown Stuart
10. Stuart Beach
11. Cleveland Clinic
12. Childrens Museum Treasure Coast



**D·R·HORTON**<sup>®</sup>  
*America's Builder*

 Sabal Pointe

INCLUDED  
Features



### **Architectural Artistry**

- Reinforced concrete monolithic foundation slab
- Masonry exterior walls
- Professionally engineered roof with hurricane clips and bracing
- IKO dimensional roof shingles
- Architecturally designed exterior elevations with each floor plan
- Fully sodded homesites with professionally designed landscaping
- Gutters in front area of driveway, entry walkway
- Hunter® automatic irrigation system
- Paver driveway, entry walkway and lanai
- Durable metal garage door
- Therma Tru® insulated fiberglass front door
- Impact resistant glass windows and sliding glass doors
- Exterior weather proof outlets (G.F.I.)
- Exterior hose bib connection

### **Heart of the Home**

- Knockdown textured finish on walls and ceilings
- Jeld-Wen® 2-panel interior doors
- Maxim® light fixtures
- Kwikset® keyed entry handleset
- Kwikset® interior door levers throughout
- Vinyl-coated ventilated shelving in all closets
- Daltile® 24" x 24" porcelain tile flooring in all first floor living areas (excluding bedrooms)
- Mohawk® luxurious wall-to-wall carpeting installed over dense padding (per plan)
- Sherwin Williams® bright white interior paint

### **A Gourmet's Delight**

- Whirlpool® stainless steel appliances:
  - 24 Cu. Ft. side x side refrigerator with ice maker
  - Glass top range with microwave above
  - Built-in dishwasher
- Moen® pull out faucet
- Moen® garbage disposal
- Sterling undermount stainless steel sink
- Kitchen island waterfall
- Quality crafted custom-designed full overlay cabinets with 36" uppers, hardware and soft close doors and drawers
- Small crown molding above kitchen cabinets
- 3CM Granite countertops
- Subway tile backsplash
- Puck lights in the kitchen

### **Thoughtful Details**

- Uponor PEX® plumbing water lines
- Minimum 50 gallon insulated water heater (per plan)
- Interior washer/dryer hook-up
- R-30 blown insulation in all attic spaces above living areas
- R-13 BATT insulation between interior wall and garage wall
- R-4.1 insulated exterior masonry walls
- Energy efficient central A/C and heating system
- Puck lights in living room and bedroom one

### **Bathroom Conveniences**

- Adult-height custom-designed full overlay cabinets with hardware and soft close doors and drawers
- Cultured marble tops
- Daltile® 10" x 14" ceramic tile walls & 2" x 2" shower floor
- Full vanity mirrors
- Frameless enclosures in all showers
- Soaking tub in bathroom one (per plan)
- Elongated commodes throughout
- Moen® bathroom faucets throughout
- Broan® exhaust fans

### **Technology Standard Features**

- Square D® surge protection on all major appliances
- Pre-wired for ceiling fans with switches in all bedrooms and living room
- High speed structured wiring for 4-line phone, video and computer Includes CAT-5 data lines and RG-6 quad shield coaxial cable (per plan)
- BRK® electrical smoke detectors with battery back-up
- BRK® carbon monoxide detector
- Deako® switches
- Minimum 150-amp electrical panel with circuit breakers

### **Home Is® Connected**

- Qolysys IQ Panel II 7" HD Touchscreen with built-in 5MP camera
- ADC 750 WiFi video doorbell
- Echo Pop™ with Alexa
- Z Wave™ Thermostat
- Z Wave™ Light Switch
- Z Wave™ Door Lock
- WiFi enabled garage door opener with two transmitters
- Security System w/ one motion detector and three door contacts

### **D.R. Horton's Personal Touch**

- Personalized New Homeowner Orientation
- D.R. Horton 1-Year Warranty
- 10-Year RWC™ warranty to protect your investment
- 10-Year Carrier® limited warranty
- 3rd party home inspections



**D·R·HORTON**<sup>®</sup>  
*America's Builder*

 Sabal Pointe

FLOORPLANS





Classic



Coastal

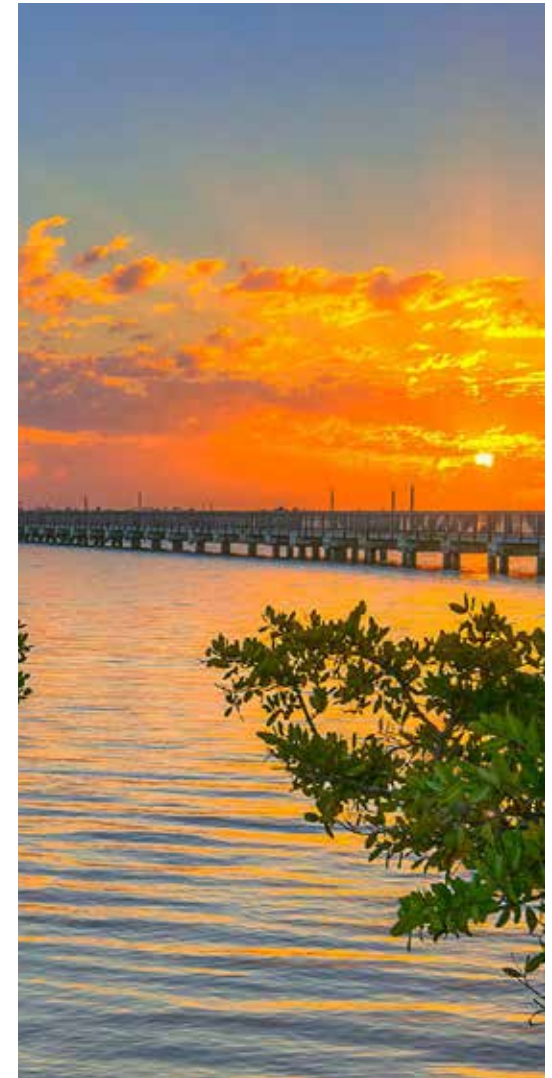
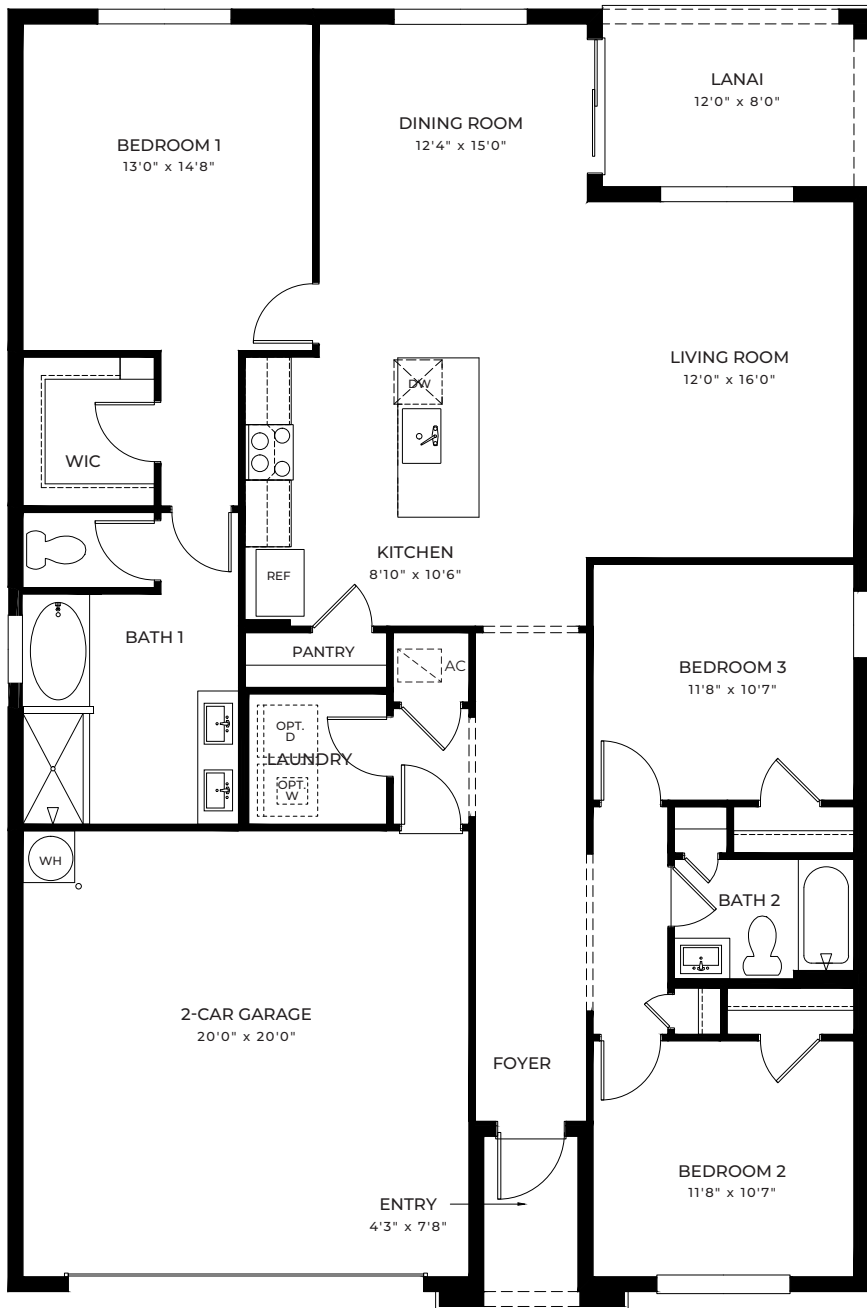
ARIA



Contemporary



Modern



## ARIA

3 Bedrooms, 2 Bathrooms  
2-Car Garage

Total A/C Sq. Ft. ....	1,672
Entry .....	36
Lanai .....	96
2-Car Garage .....	432
<b>Total Sq. Ft. ....</b>	<b>2,236</b>

**D·R·HORTON®**  
*America's Builder*

 Sabal Pointe





Classic



Coastal

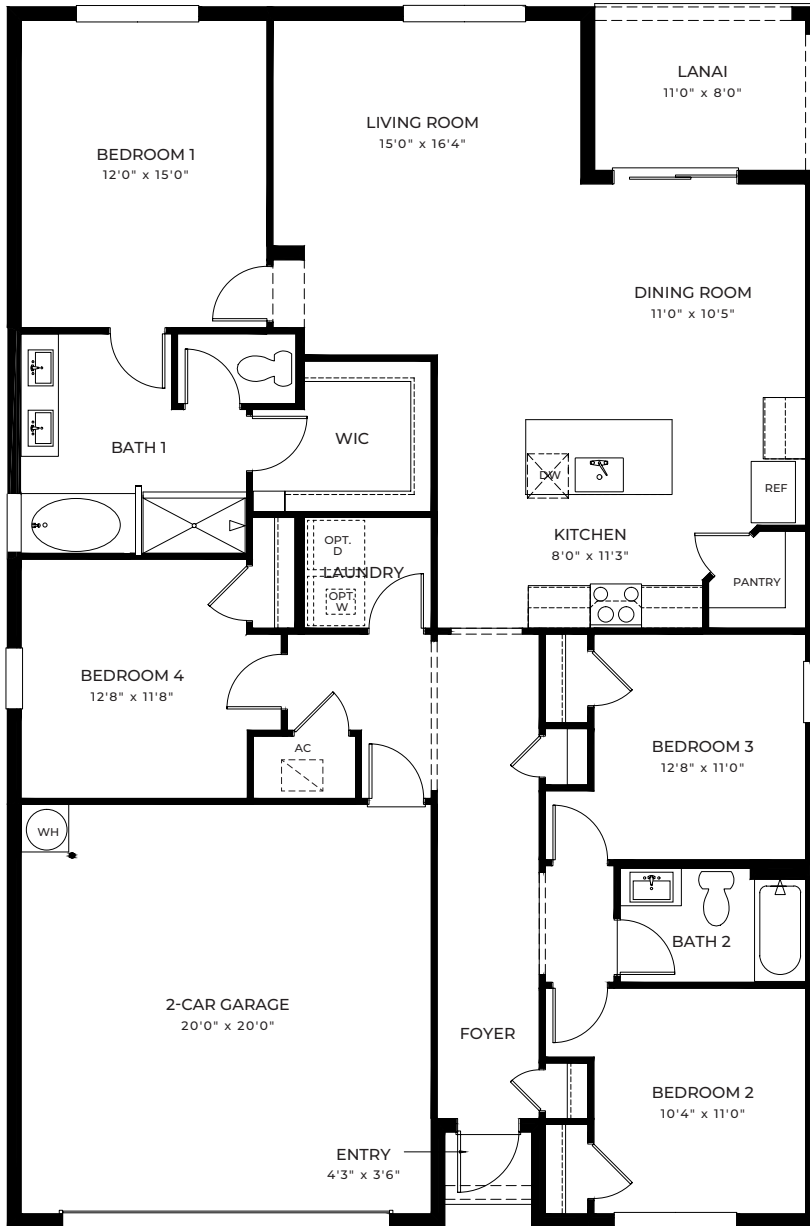
CALI



Contemporary



Modern



# CALI

4 Bedrooms, 2 Bathrooms  
2-Car Garage

Total A/C Sq. Ft. ....	1,828
Entry .....	16
Lanai .....	88
2-Car Garage .....	430
<b>Total Sq. Ft. ....</b>	<b>2,362</b>







Classic



Coastal

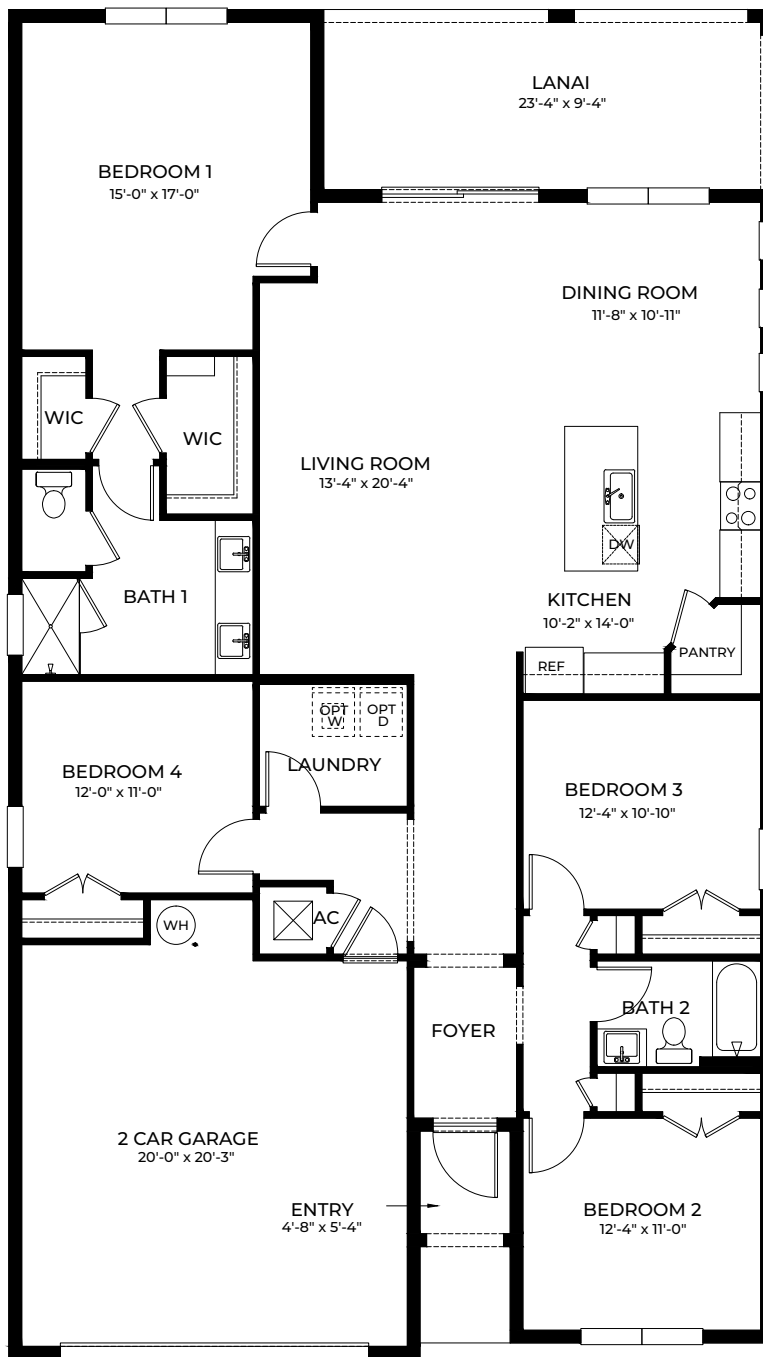
DELRAY



Contemporary



Modern



## DELRAY

4 Bedrooms, 2 Bathrooms  
2-Car Garage

Total A/C Sq. Ft. ....	2,034
Entry .....	28
Lanai .....	218
2-Car Garage .....	458
<b>Total Sq. Ft. ....</b>	<b>2,738</b>

**D·R·HORTON**<sup>®</sup>  
*America's Builder*

 Sabal Pointe





Classic

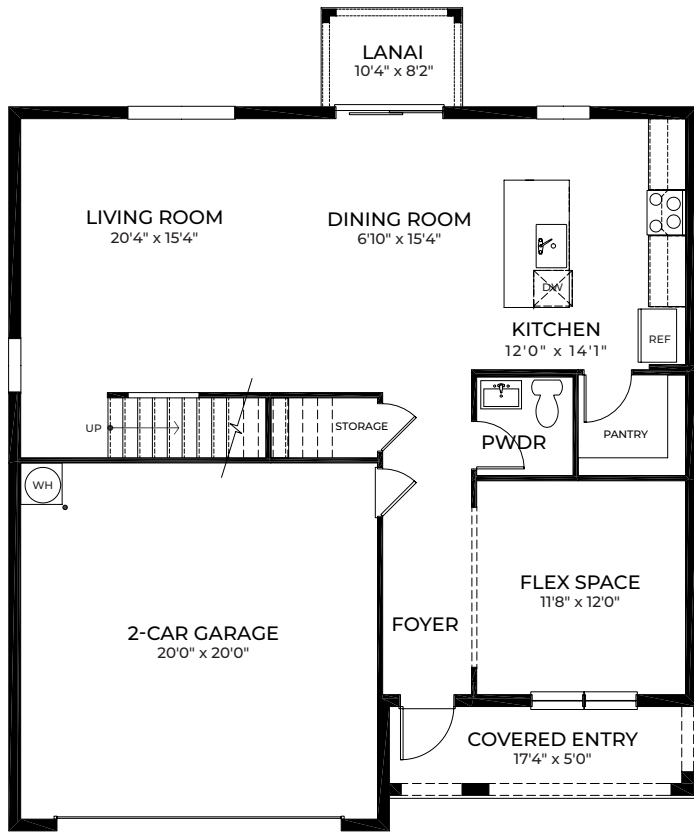
Coastal

GALEN

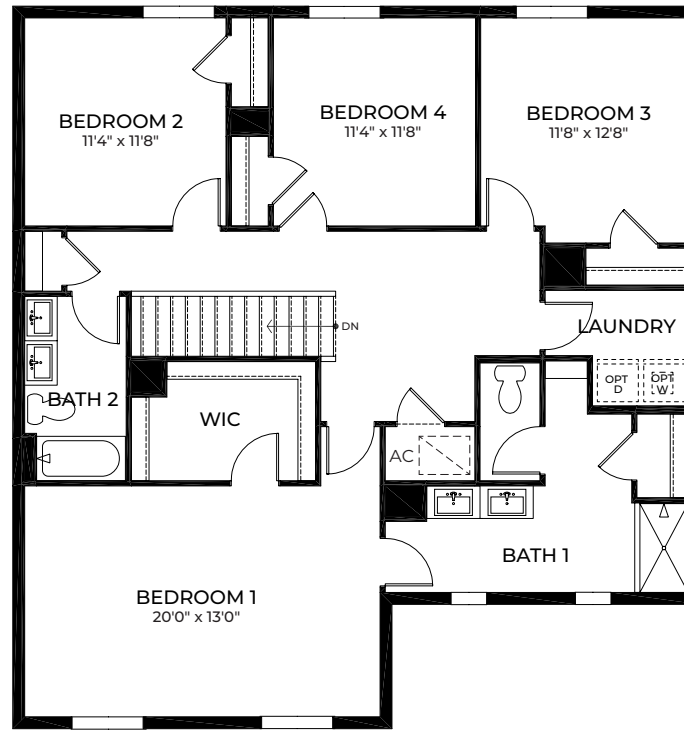


Contemporary

Modern



FIRST FLOOR



SECOND FLOOR



## GALEN

4 Bedrooms, 2.5 Bathrooms  
Flex Space, 2-Car Garage

1st Floor A/C Sq. Ft.	1,019
2nd Floor A/C Sq. Ft.	1,451
<b>Total A/C Sq. Ft.</b>	<b>2,470</b>
Covered Entry	87
Lanai	84
2-Car Garage	432
<b>Total Sq. Ft.</b>	<b>3,073</b>







Classic



Coastal

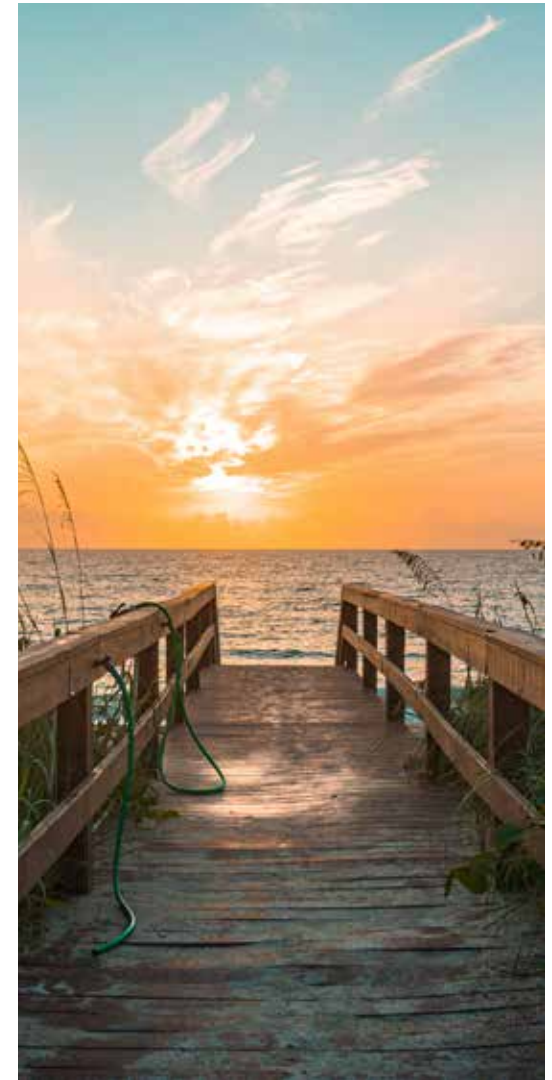
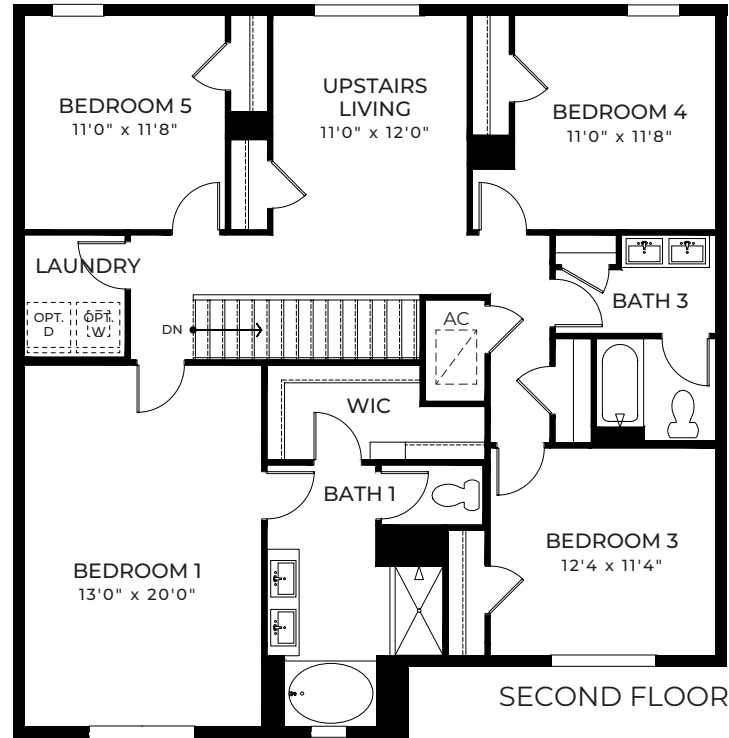
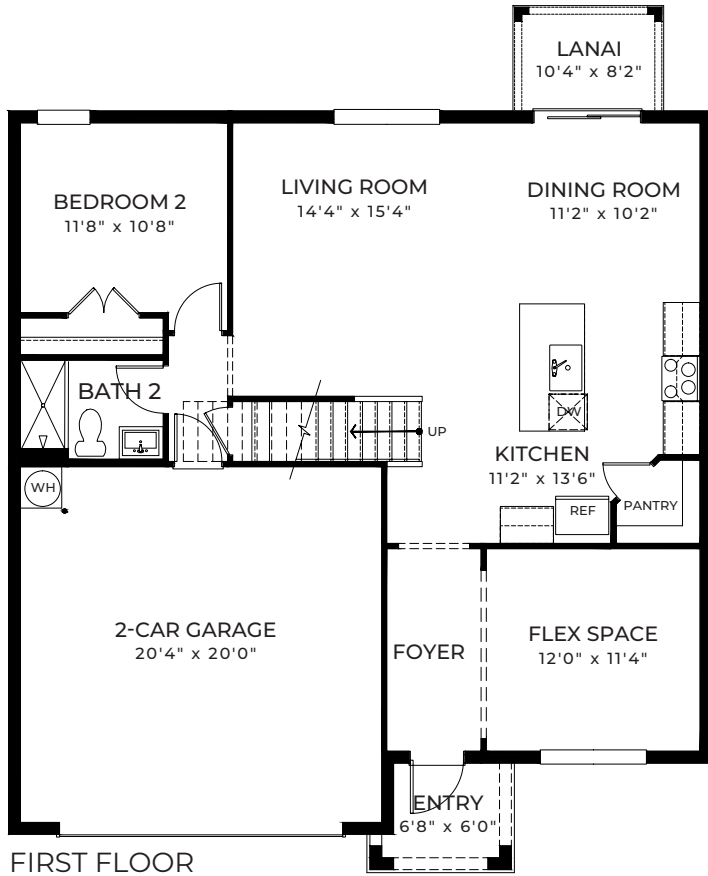
HAYDEN



Contemporary



Modern



## HAYDEN

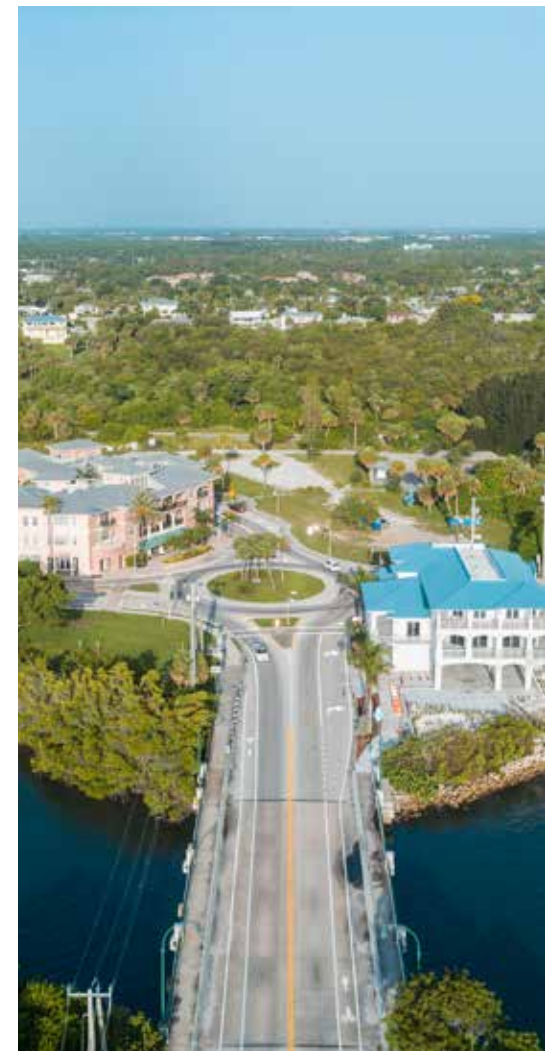
5 Bedrooms, 3 Bathrooms  
Flex Space, Upstairs Living  
2-Car Garage

1st Floor A/C Sq. Ft.	1,104
2nd Floor A/C Sq. Ft.	1,541
<b>Total A/C Sq. Ft.</b>	<b>2,645</b>
Entry	45
Lanai	84
2-Car Garage	437
<b>Total Sq. Ft.</b>	<b>3,211</b>

**D·R·HORTON**  
*America's Builder*

 Sabal Pointe





## COMMUNITY Siteplan

**D·R·HORTON**  
America's Builder

Sabal Pointe

2086 NE Cedar Street, Jensen Beach, FL 34957

772.261.2408 | drhorton.com

D.R. Horton is equal housing opportunity builder. Home and community information, including pricing, included features, terms, availability and amenities, are subject to change and prior sale at any time without notice or obligation. Pictures, photographs, features, colors, drawings, floor plans, square footages and sizes are approximate for illustration purposes only and will vary from the homes as built. All drawings are the artist's concept. Buyer should conduct his or her own investigation of the present and future availability of school districts and school assignments. D.R. Horton has no control or responsibility for any changes to school districts or school assignments should they occur in the future. Home Is Connected, A smart home is a convenient home setup where appliances and devices can be automatically controlled remotely from any internet-connected place using a mobile or other networked device. Certified General Contractor License Number CGC05939