



D·R·HORTON®
America's Builder


PRESERVES
AT PARK TRACE

SINGLE-FAMILY HOMES
Emerald SeriesSM

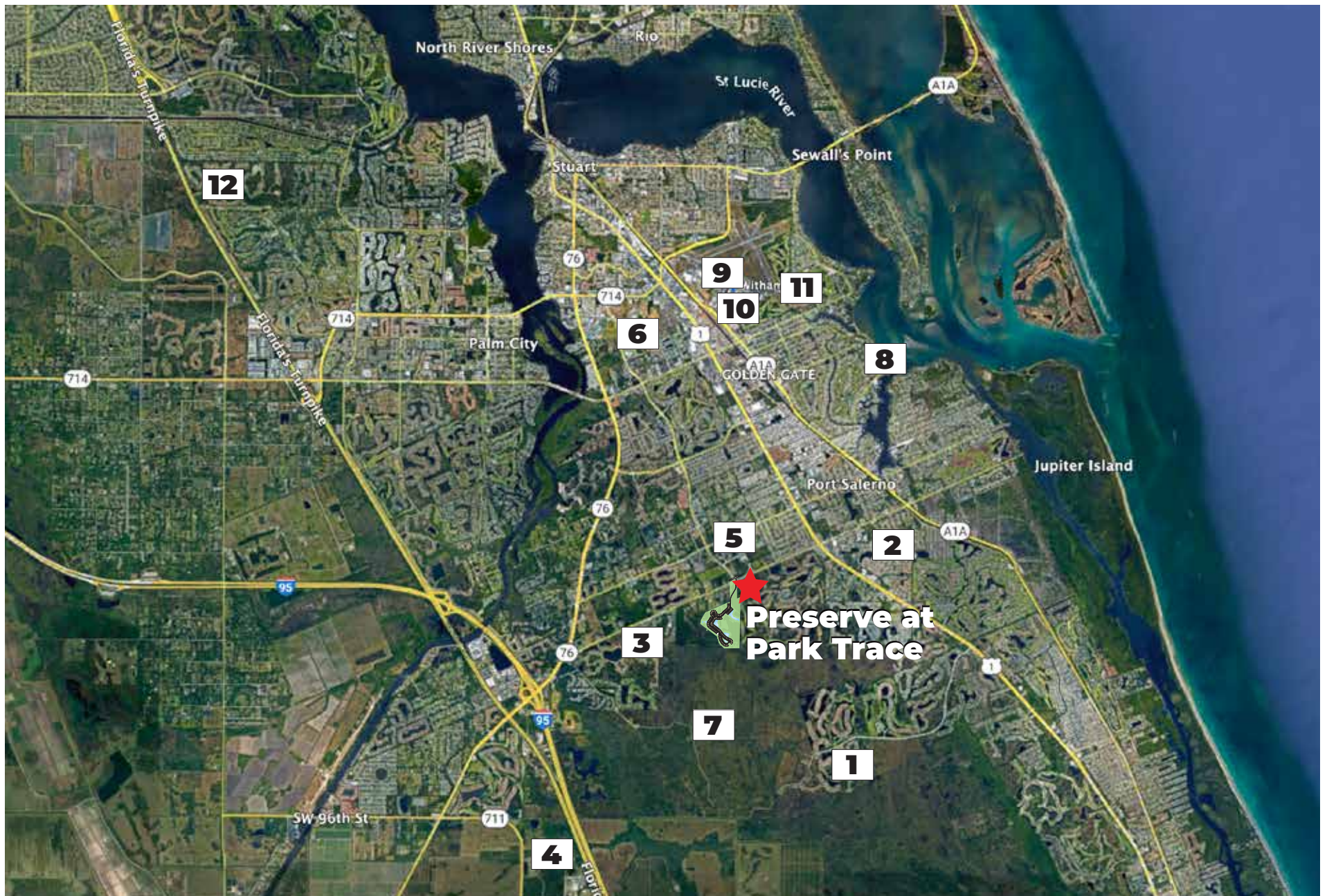


D·R·HORTON®
America's Builder


PRESERVES
AT PARK TRACE

AMENITIES
Coming Soon

Community Pool, Cabana, Gated Entrance,
Community Lake, Entry Tower



- 1. Seawind Elementary
- 2. Murray Middle School
- 3. Dr. David L Anderson Middle School
- 4. South Fork High School

- 5. Cleveland Clinic Martin South Hospital
- 6. Sailfish Splash Waterpark
- 7. Atlantic Ridge Preserve
- 8. Sandsprit Park

- 9. Witham Field Airport
- 10. Martin County Fairgrounds
- 11. Sailfish Sands Golf Course
- 12. Hammock Creek Golf Club



D·R·HORTON®
America's Builder


PRESERVES
AT PARK TRACE

INCLUDED
Features

Architectural Artistry

- Reinforced concrete monolithic foundation slab
- Masonry exterior walls
- Professionally engineered roof with hurricane clips and bracing
- IKO® dimensional roof shingles
- Architecturally designed exterior elevations with each floor plan
- Fully sodded homesites with professionally designed landscaping
- Gutters in front area of driveway, entry walkway
- Hunter® automatic irrigation system
- Paver driveway, entry walkway and lanai
- Durable metal garage doors
- Therma Tru® insulated fiberglass front door
- Impact resistant glass windows and sliding glass doors
- Exterior weather proof outlets (G.F.I.)
- Exterior hose bib connection

Heart of the Home

- Knockdown textured finish on walls and ceilings
- Jeld-Wen® 2-panel interior doors
- Maxim® light fixtures
- Kwikset® keyed entry handleset
- Kwikset® interior door levers throughout
- Vinyl-coated ventilated shelving in all closets
- Daltile® 24" x 24" porcelain tile flooring in all first floor living areas (excluding bedrooms)
- Mohawk® luxurious wall-to-wall carpeting installed over dense padding (per plan)
- Sherwin Williams® bright white interior paint

A Gourmet's Delight

- Whirlpool® stainless steel appliances:
 - 24 Cu. Ft. side x side refrigerator with ice maker
 - Ceramic glass top range with microwave above
 - Built-in dishwasher
- Moen® pull out faucet
- Moen® garbage disposal
- Sterling undermount stainless steel sink
- Kitchen island waterfall
- Quality crafted custom-designed full overlay cabinets with 36" uppers, hardware and soft close doors and drawers
- Small crown molding above kitchen cabinets
- 3CM Granite countertops
- Subway tile backsplash
- Puck lights in the kitchen

Thoughtful Details

- Uponor PEX® plumbing water lines
- Minimum 50 gallon insulated water heater (per plan)
- Interior washer/dryer hook-up
- R-30 blown insulation in all attic spaces above living areas
- R-13 BATT insulation between interior wall and garage wall
- R-4.1 insulated exterior masonry walls
- Energy efficient central A/C and heating system
- Puck lights in great room and bedroom one

Bathroom Conveniences

- Adult-height custom-designed full overlay cabinets with hardware and soft close doors and drawers
- Cultured marble tops
- Daltile® 10"x14" ceramic tile walls and 2"x2" shower floor
- Full vanity mirrors
- Frameless enclosures in all showers
- Soaking tub in bathroom one (per plan)
- Elongated commodes throughout
- Moen® bathroom faucets throughout
- Broan® exhaust fans

Technology Standard Features

- Square D® surge protection on all major appliances
- Pre-wired for ceiling fans with switches in all bedrooms and great room
- High speed structured wiring for 4-line phone, video and computer Includes CAT-5 data lines and RG-6 quad shield coaxial cable (per plan)
- BRK® electrical smoke detectors with battery back-up
- BRK® carbon monoxide detector
- Deako® switches
- Minimum 150-amp electrical panel with circuit breakers

Home Is® Connected

- Qolsys IQ Panel II 7" HD Touchscreen with built-in 5MP camera
- ADC 750 WiFi video doorbell
- Echo Pop™ with Alexa
- Z Wave™ Thermostat
- Z Wave™ Light Switch
- Z Wave™ Door Lock
- WiFi enabled garage door opener with two transmitters
- Security System w/ one motion detector and three door contacts

D.R. Horton's Personal Touch

- Personalized New Homeowner Orientation
- D.R. Horton 1-Year Warranty
- 10-Year RWC™ warranty to protect your investment
- 10-Year Carrier® limited warranty
- 3rd party home inspections



D·R·HORTON®
America's Builder


PRESERVES
AT PARK TRACE

FLOORPLANS



Classic



Coastal

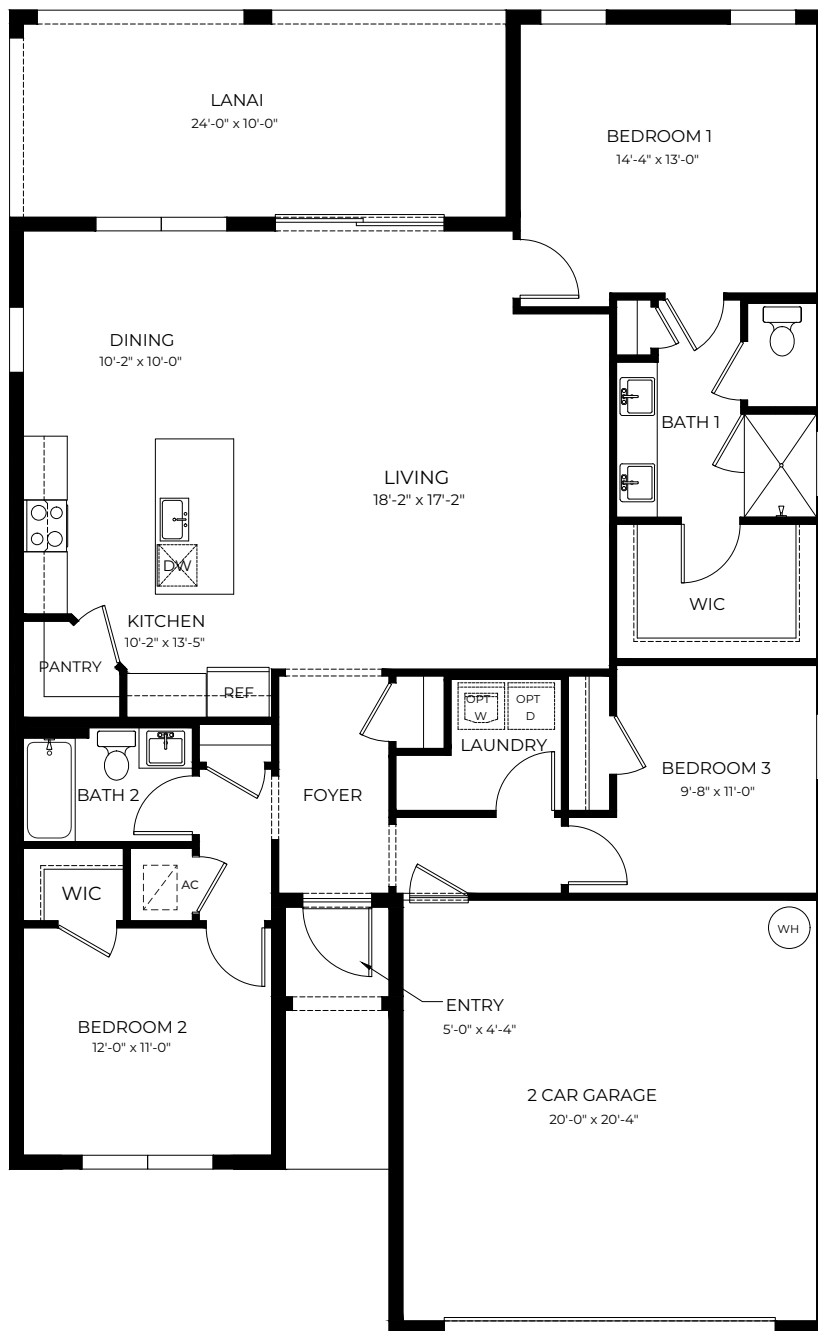
AVON



Contemporary



Modern



AVON

3 Bedrooms, 2 Bathrooms
2-Car Garage

Total A/C Sq. Ft.	1,641
Entry	25
Lanai	240
2-Car Garage	448
Total Sq. Ft.	2,354

D·R·HORTON®
America's Builder


PRESERVES
AT PARK TRACE



Classic



Coastal

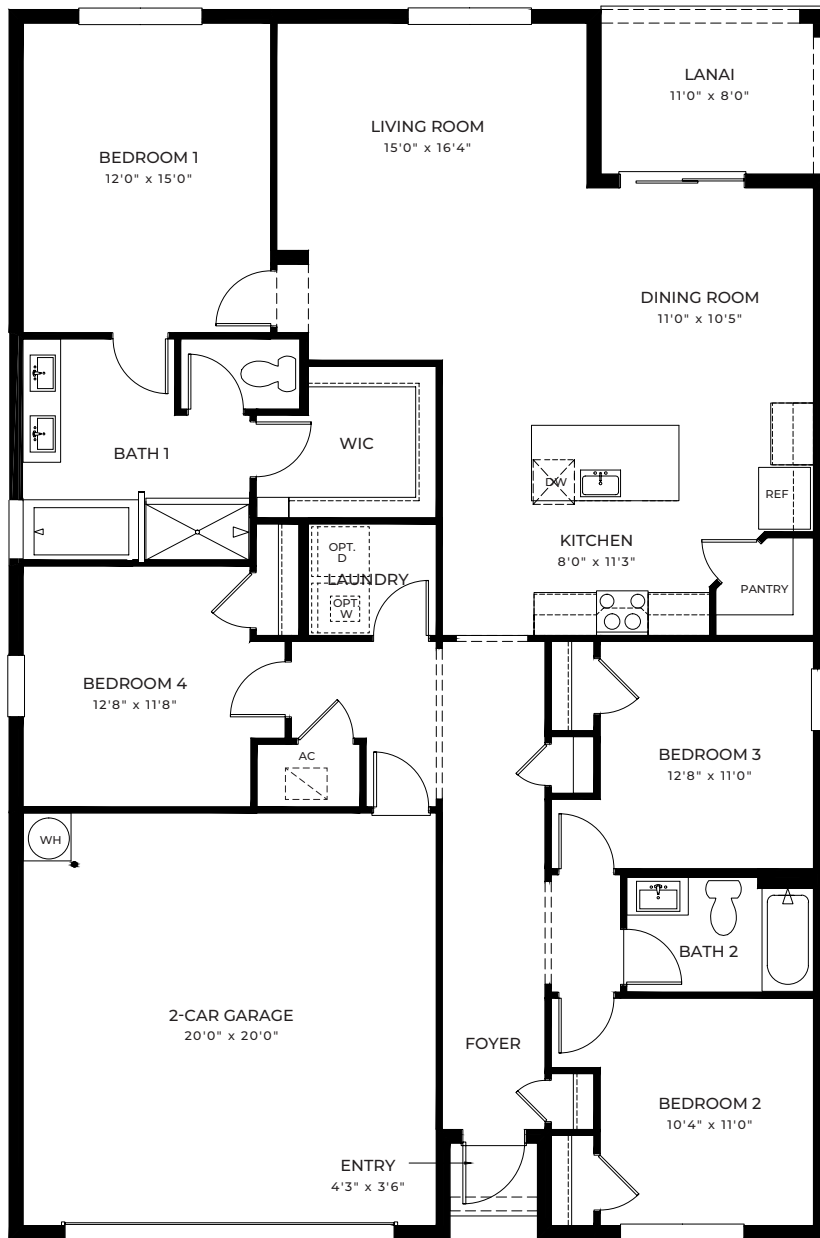
CALI



Contemporary

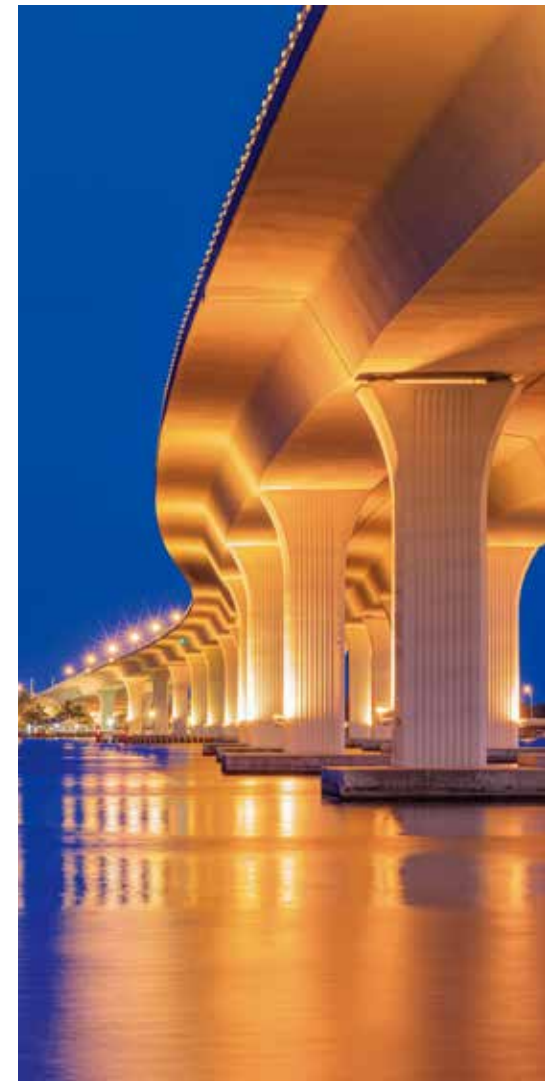


Modern



D·R·HORTON®
America's Builder


PRESERVES
AT PARK TRACE



CALI

4 Bedrooms, 2 Bathrooms
2-Car Garage

Total A/C Sq. Ft.1,828
 Entry16
 Lanai 88
 2-Car Garage 430
Total Sq. Ft.2,362



Classic



Coastal

DELRAY



Contemporary



Modern



DELRAY

4 Bedrooms, 2 Bathrooms
2-Car Garage

Total A/C Sq. Ft.	2,034
Entry	28
Lanai	218
2-Car Garage	458
Total Sq. Ft.	2,738

D·R·HORTON®
America's Builder


PRESERVES
AT PARK TRACE



Classic

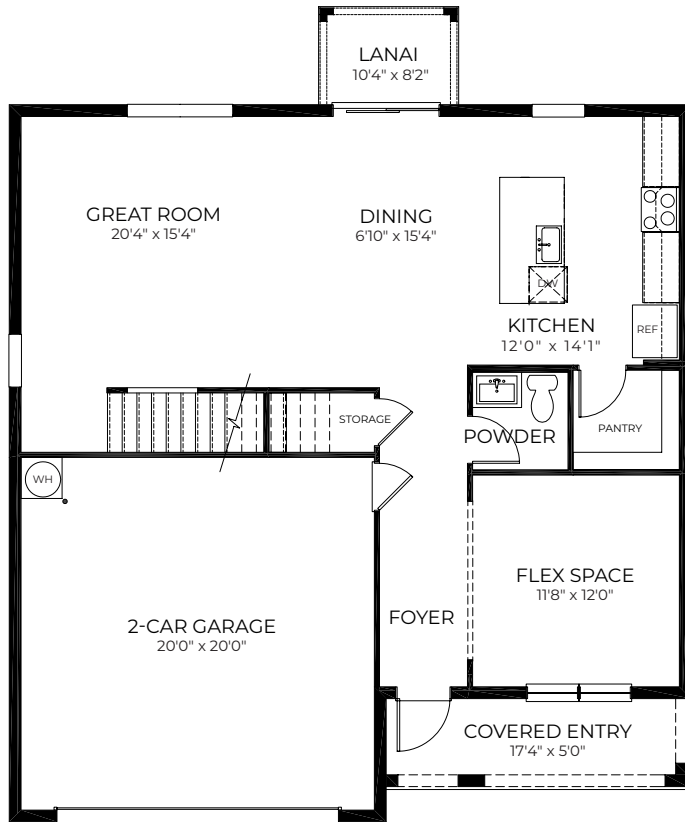
Coastal

GALEN

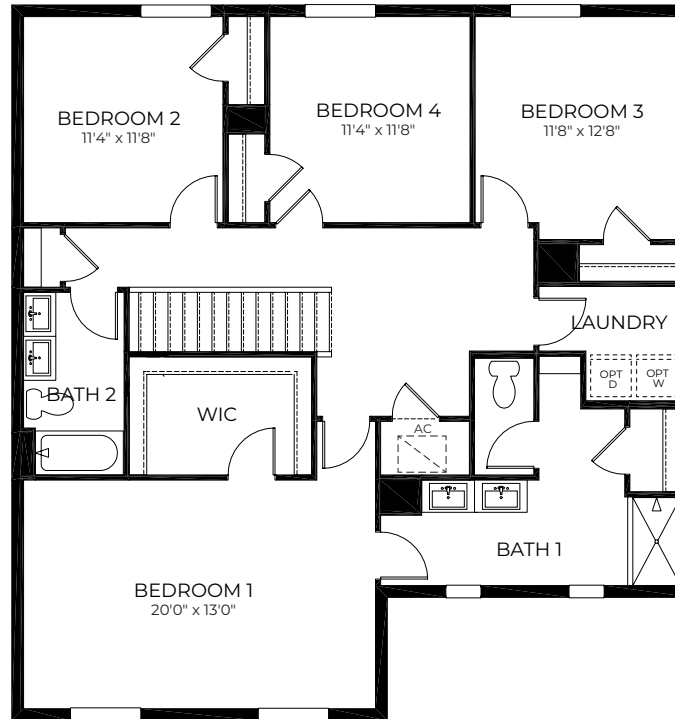


Contemporary

Modern



FIRST FLOOR



SECOND FLOOR



GALEN

4 Bedrooms, 2.5 Bathrooms
Flex Space, 2-Car Garage

1st Floor A/C Sq. Ft.	1,019
2nd Floor A/C Sq. Ft.	1,451
Total A/C Sq. Ft.	2,470
Covered Entry	87
Lanai	84
2-Car Garage	432
Total Sq. Ft.	3,073

D·R·HORTON®
America's Builder


PRESERVES
AT PARK TRACE



Classic



Coastal

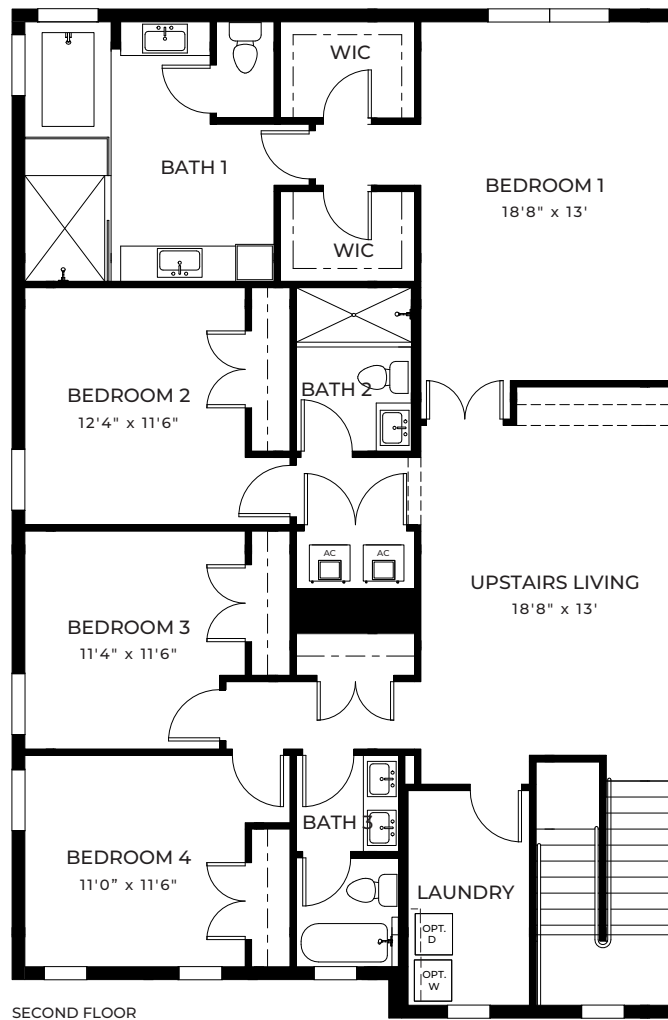
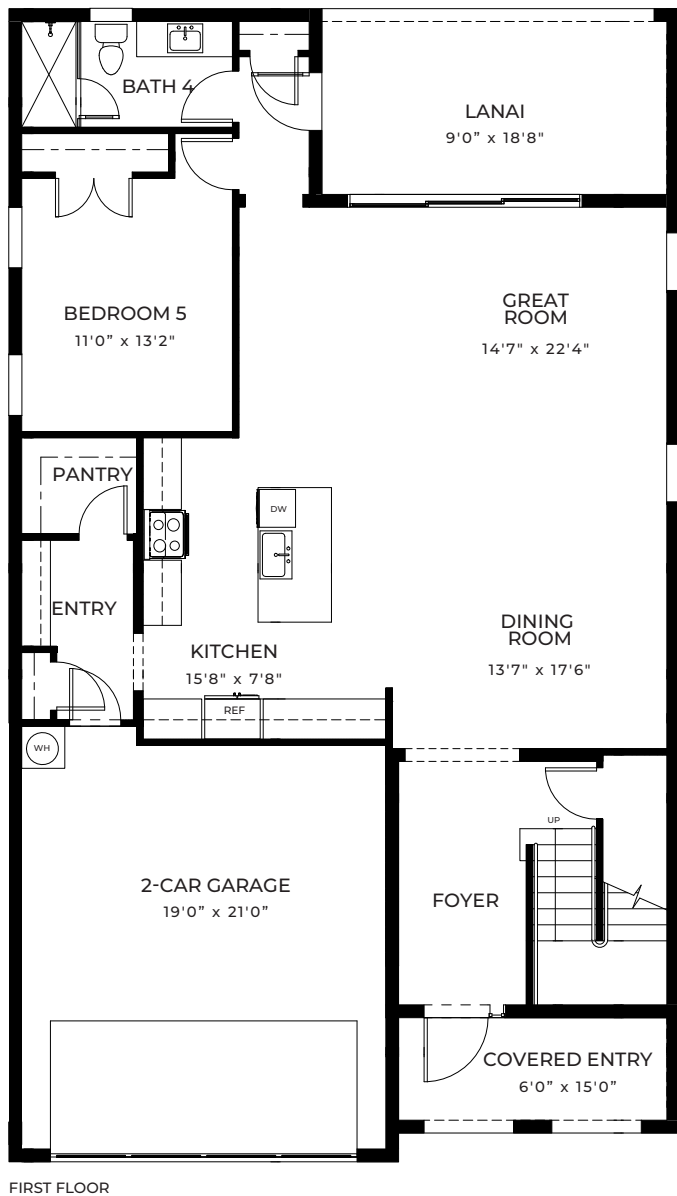
PONTE VEDRA



Contemporary



Modern



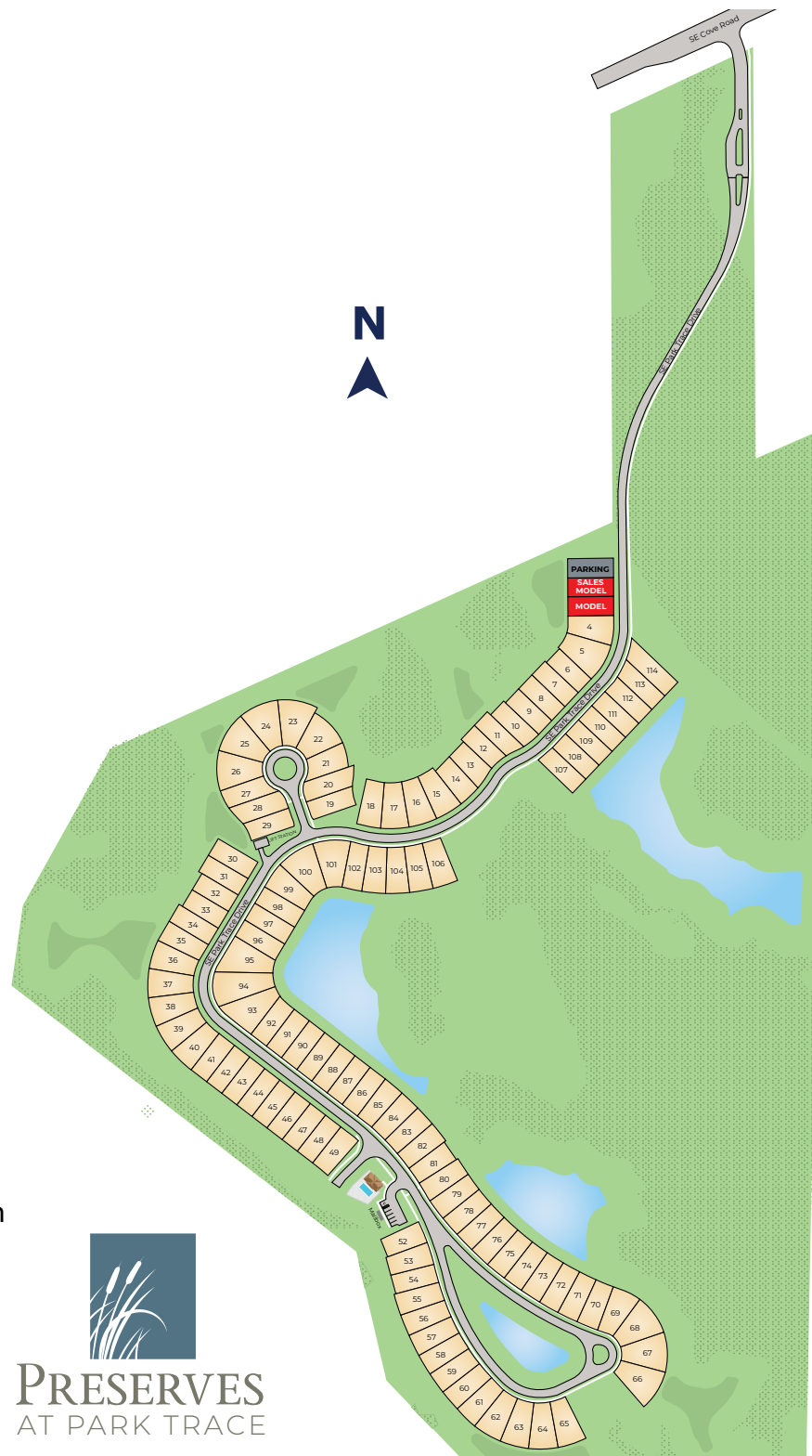
PONTE VEDRA

5 Bedrooms, 4 Bathrooms
Upstairs Living
2-Car Garage

1st Floor A/C Sq. Ft.	1,372
2nd Floor A/C Sq. Ft.	1,700
Total A/C Sq. Ft.	3,072
Covered Entry	88
Lanai	180
2-Car Garage	447
Total Sq. Ft.	3,787

D·R·HORTON®
America's Builder


PRESERVES
AT PARK TRACE



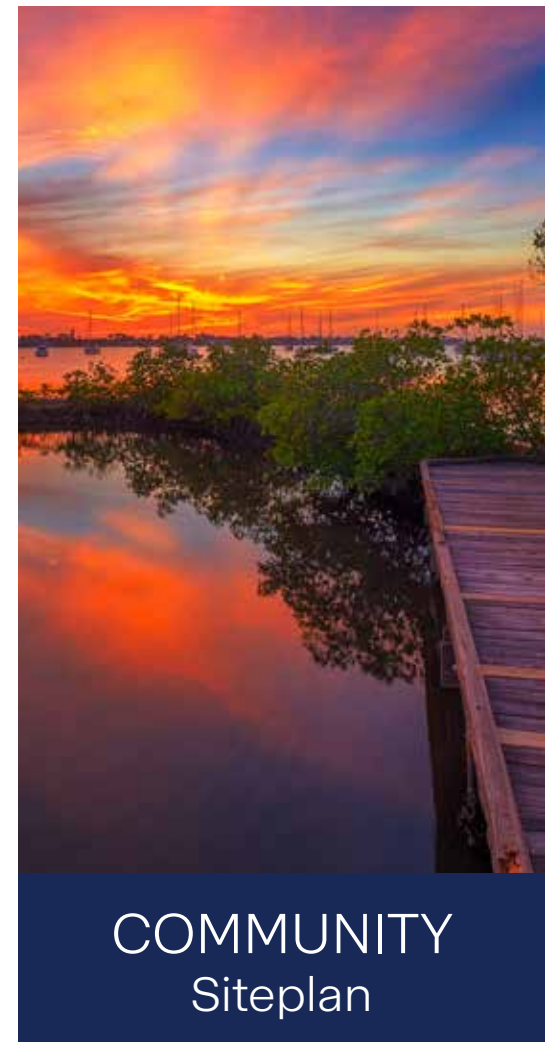
Selling By Appointment Only

6510 SE Park Trace
Drive Stuart, FL 34997

772.222.3873 | drhorton.com

D·R·HORTON®
America's Builder


PRESERVES
AT PARK TRACE



COMMUNITY Siteplan

D.R. Horton is equal housing opportunity builder. Home and community information, including pricing, included features, terms, availability and amenities, are subject to change and prior sale at any time without notice or obligation. Pictures, photographs, features, colors, drawings, floor plans, square footages and sizes are approximate for illustration purposes only and will vary from the homes as built. All drawings are the artist's concept. Buyer should conduct his or her own investigation of the present and future availability of school districts and school assignments. D.R. Horton has no control or responsibility for any changes to school districts or school assignments should they occur in the future. Home Is Connected, A smart home is a convenient home setup where appliances and devices can be automatically controlled remotely from any internet-connected place using a mobile or other networked device. Certified General Contractor License Number CGC05939