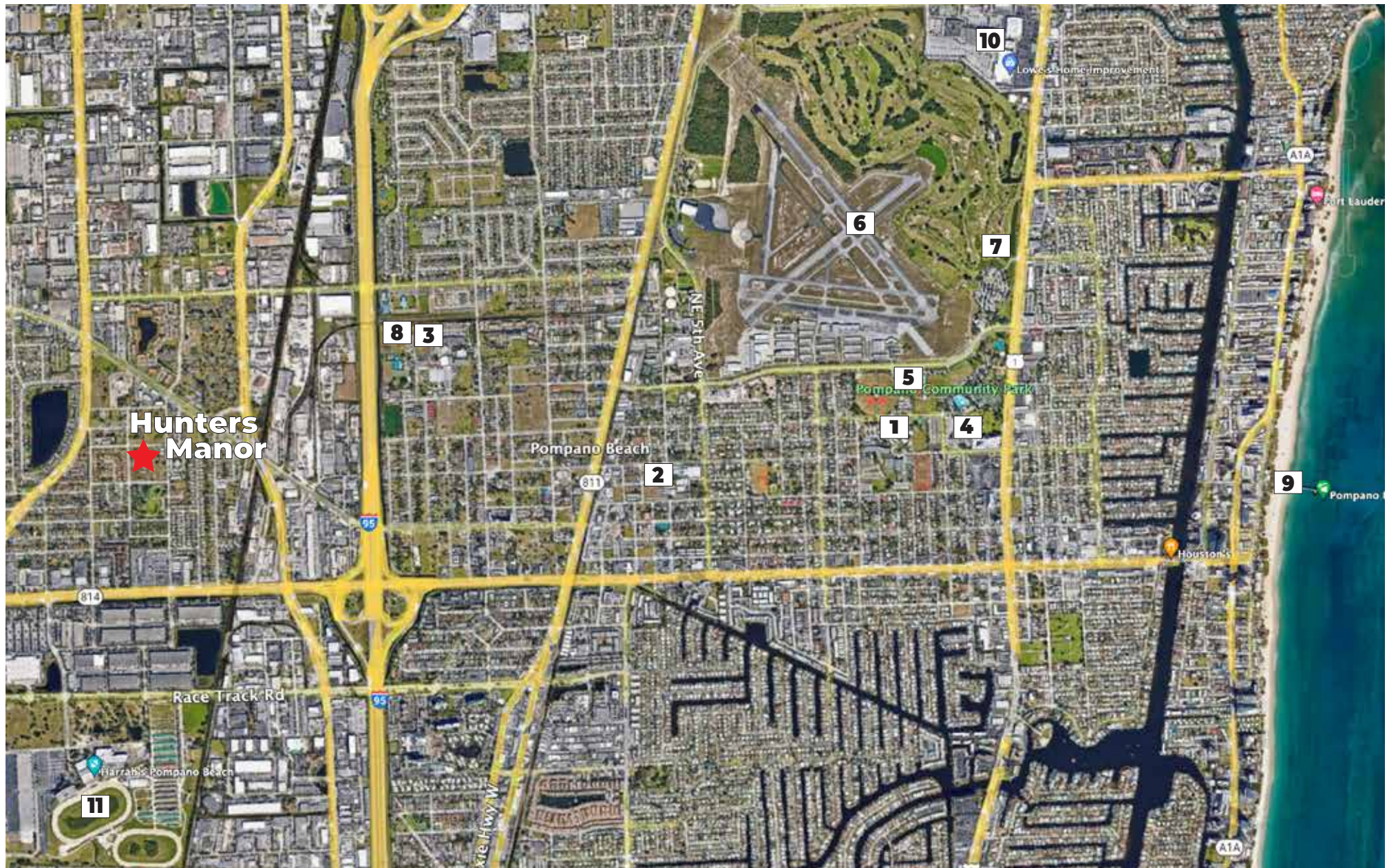




D·R·HORTON®
America's Builder


HUNTERS MANOR

SINGLE-FAMILY HOMES
Pompano Beach



NEIGHBORHOOD Map

1. Pompano Beach Elementary School
2. Pompano Beach Middle School
3. Blanche Ely High School
4. Pompano Beach Amphitheater
5. Pompano Community Park
6. Pompano Beach Air Park

7. Pompano Beach Golf Shop
8. Mitchell Moore Park
9. Pompano Beach Pier
10. Pompano Citi Centre Mall
11. Harrah's Pompano Beach Casino



D·R·HORTON
America's Builder


HUNTERS MANOR

INCLUDED
Features

Architectural Artistry

- Reinforced concrete monolithic foundation slab
- Masonry exterior walls
- Professionally engineered roof with hurricane clips and bracing
- IKO® dimensional roof shingles
- Architecturally designed exterior elevations with each floor plan
- Fully sodded homesites with professionally designed landscaping
- Gutters in front area of driveway, entry walkway
- Hunter® automatic irrigation system
- Paver driveway, entry walkway, and lanai
- Durable metal garage door
- Therma Tru® insulated fiberglass front door
- Exterior weather proof outlets (G.F.I.)
- Exterior hose bib connection

Heart of the Home

- Orange peel finish on walls and knockdown on ceilings
- Jeld-Wen® 2-panel interior doors
- Maxim® light fixtures
- Kwikset® keyless entry
- Kwikset® interior door levers throughout
- Vinyl-coated ventilated shelving in all closets
- Daltile® 18" x 18" ceramic tile flooring in all first floor living areas (excluding bedrooms)
- Mohawk® luxurious wall-to-wall carpeting (installed over dense padding)
- Sherwin Williams® bright white interior paint

A Gourmet's Delight

- Whirlpool® stainless steel appliances:
 - 24 Cu. Ft. side x side refrigerator with ice maker
 - Glass top range with microwave above
 - Built-in dishwasher
- 2CM Granite countertops
- Moen® pull out faucet
- Moen® garbage disposal
- Sterling undermount stainless steel sink
- Quality crafted custom designed cabinets with 36" uppers
- Puck lights in the kitchen

Thoughtful Details

- Uponor PEX® plumbing water lines
- Interior washer/dryer hook-up
- R-30 blown insulation in all attic spaces above living areas
- R-11 BATT insulation between interior wall and garage wall
- R-4.1 insulated exterior masonry walls
- Energy efficient central A/C and heating system
- Puck lights in living room or great room

Bathroom Conveniences

- Adult-height custom designed cabinets
- 2CM Quartz tops
- Daltile® 18" x 18" ceramic tile walls & 12" x 12" shower floor
- Full vanity mirrors
- Semi-frameless glass shower enclosure
- Elongated commodes throughout
- Moen® bathroom faucets throughout
- Broan® exhaust fans

Technology Standard Features

- Square D® surge protection on all major appliances
- Pre-wired for ceiling fans with switches in all bedrooms and great room
- BRK® electrical smoke detectors with battery back-up
- BRK® carbon monoxide detector
- Deako® switches
- Square D® electrical panel with circuit breakers

Home Is® Connected

- Qolysys IQ Panel II 7" HD Touchscreen with built-in 5MP camera
- ADC 750 WiFi video doorbell
- Echo Pop™ with Alexa
- Z Wave™ Thermostat
- Z Wave™ Light Switch
- Z Wave™ Door Lock
- WiFi enabled garage door opener with two transmitters
- Security System w/ one motion detector and three door contacts

D.R. Horton's Personal Touch

- Personalized New Homeowner Orientation
- D.R. Horton 1-Year Warranty
- 10-Year RWC™ warranty to protect your investment
- 10-Year Carrier® limited warranty
- 3rd party home inspections





D·R·HORTON®
America's Builder


HUNTERS MANOR

FLOORPLANS
Single-Family Homes



Classic



Coastal

MERRIT



Contemporary



Modern



Classic



Coastal

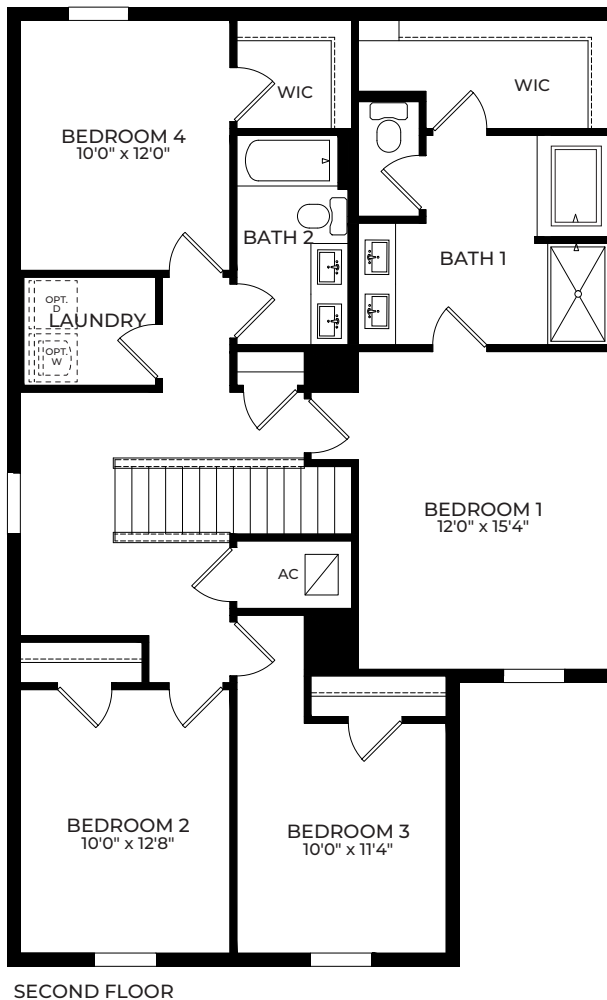
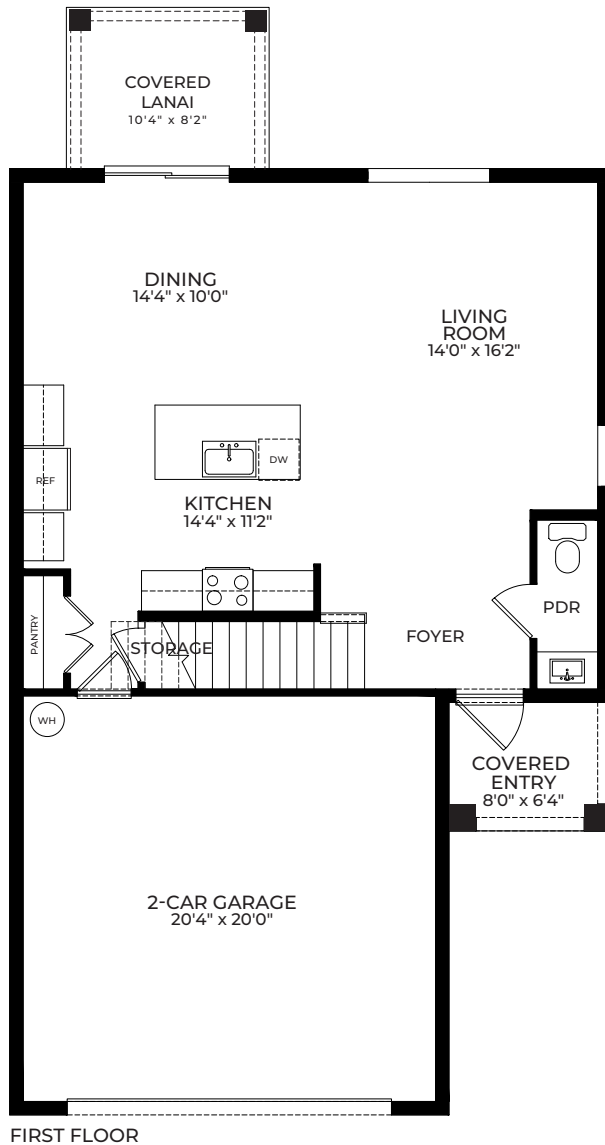
AISLE



Contemporary



Modern



AISLE

4 Bedrooms
2.5 Bathrooms
2-Car Garage

1st Floor A/C Sq. Ft.	774
2nd Floor A/C Sq. Ft.	1,272
Total A/C Sq. Ft.	2,046
Covered Entry	51
Covered Lanai	80
2-Car Garage	448
Total Sq. Ft.	2,625





Classic



Coastal

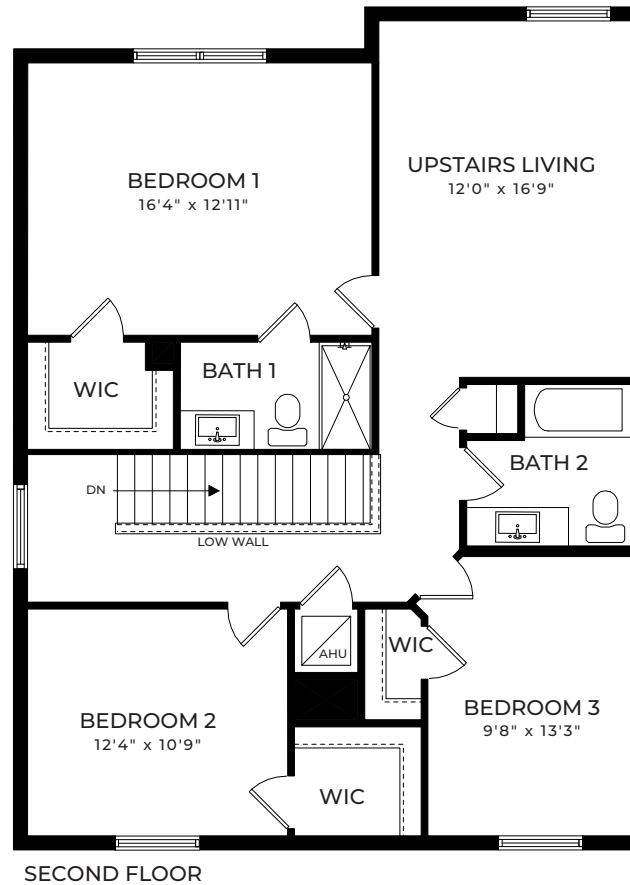
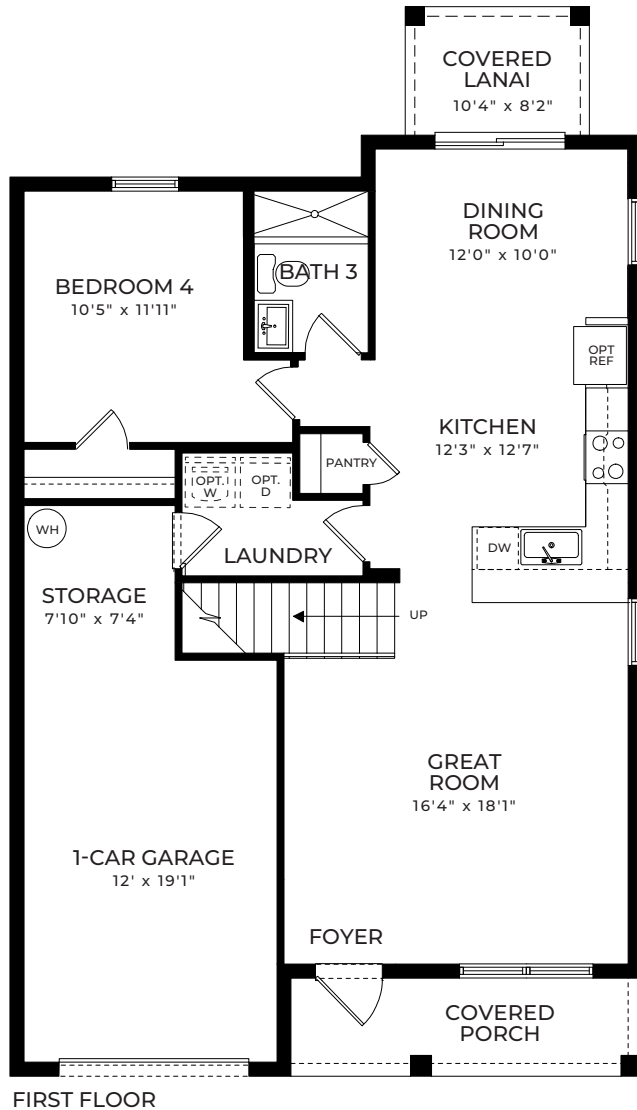
SAPOLE



Contemporary



Modern



SAPOLE

4 Bedrooms
3 Bathrooms
Upstairs Living
1-Car Garage

1st Floor A/C Sq. Ft.	918
2nd Floor A/C Sq. Ft.	1,167
Total A/C Sq. Ft.	2,085
Covered Entry	78
Covered Lanai	80
1-Car Garage	311
Total Sq. Ft.	2,554

D·R·HORTON®
America's Builder



HUNTERS MANOR



Classic



Coastal

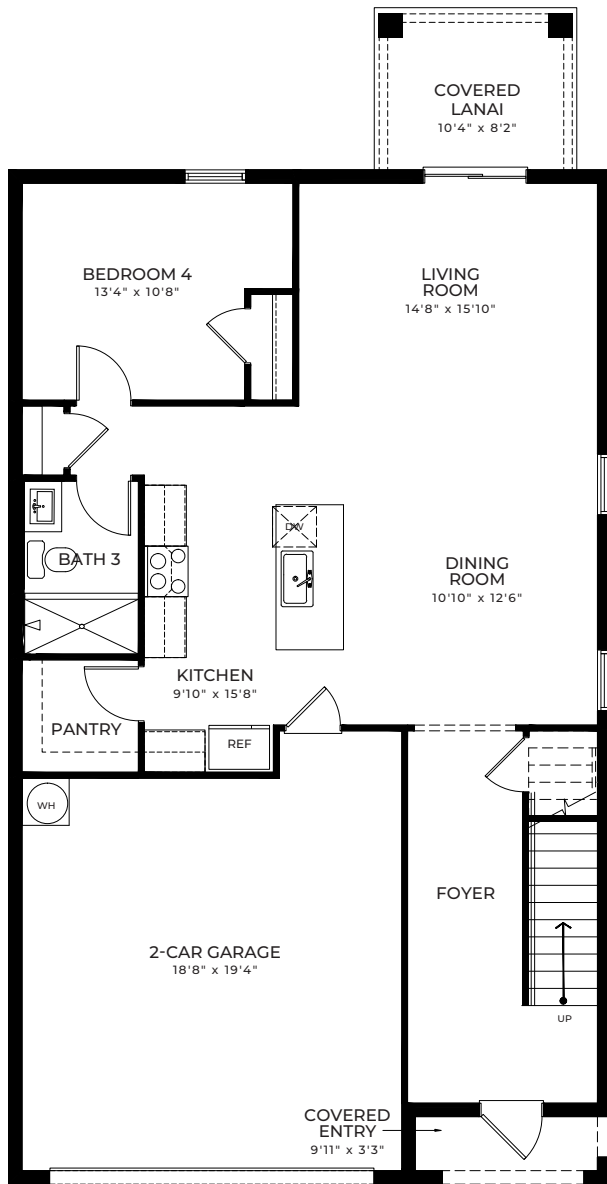
ROBIE



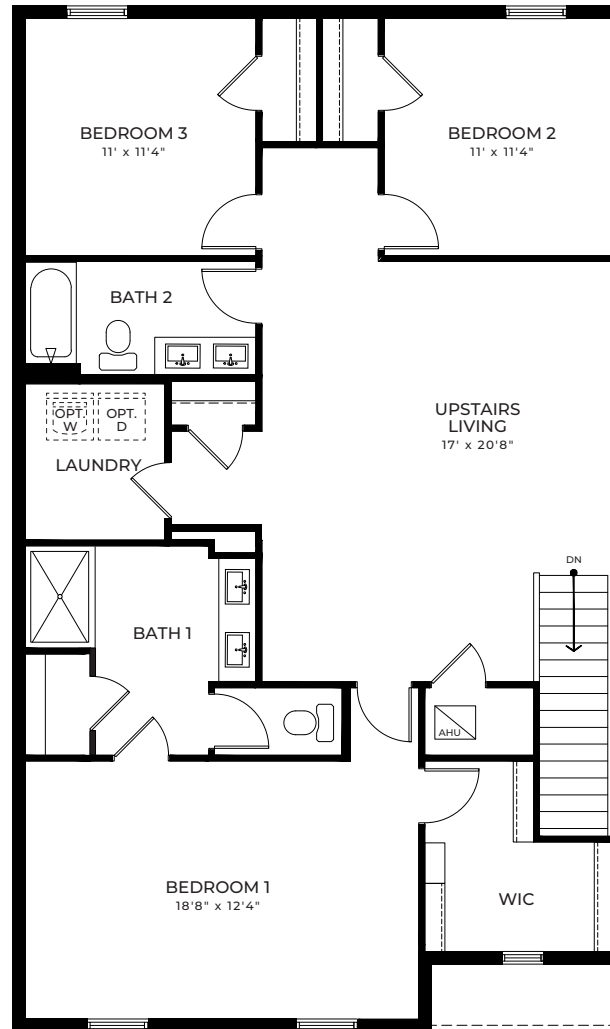
Contemporary



Modern



FIRST FLOOR



SECOND FLOOR



ROBIE

4 Bedrooms
3 Bathrooms
Upstairs Living
2-Car Garage

1st Floor A/C Sq. Ft.	1,048
2nd Floor A/C Sq. Ft.	1,451
Total A/C Sq. Ft.	2,499
Covered Entry	32
Covered Lanai	80
2-Car Garage	403
Total Sq. Ft.	3,014

D·R·HORTON®
America's Builder



HUNTERS MANOR



Classic



Coastal

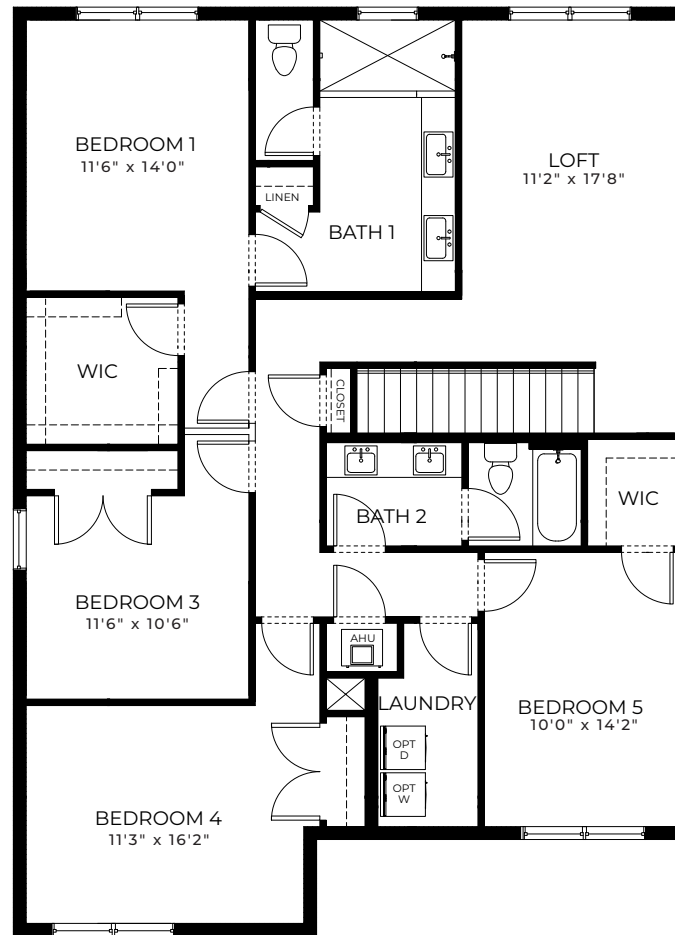
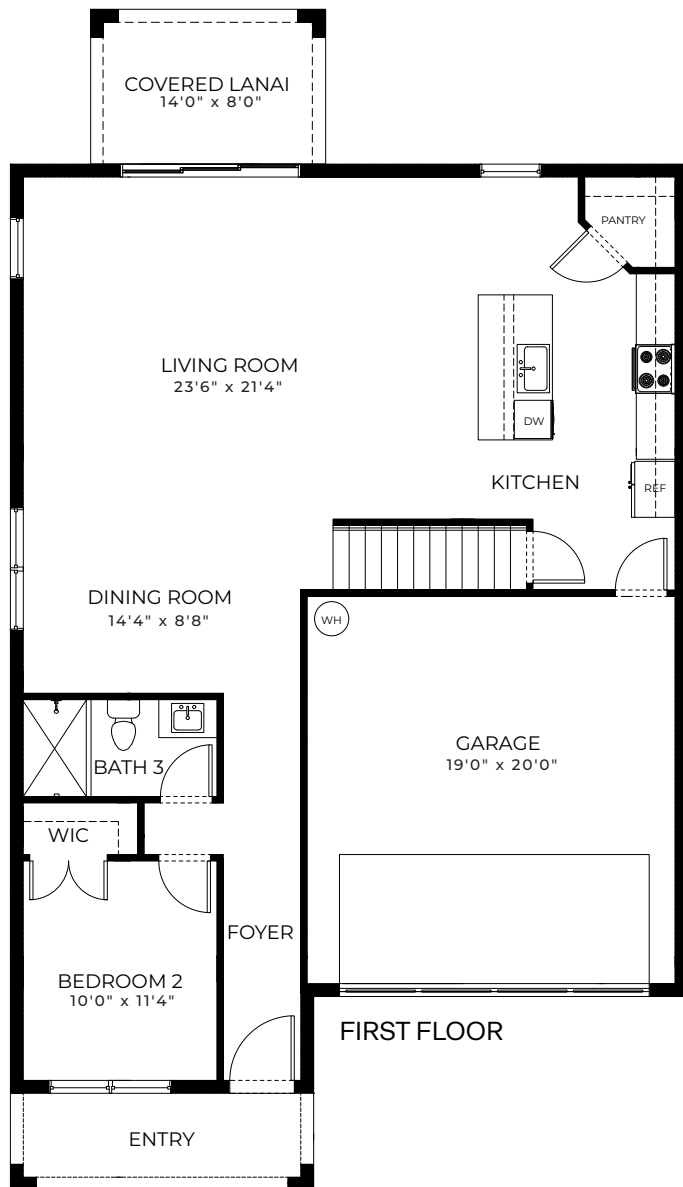
PARKER



Contemporary



Modern



SECOND FLOOR



PARKER

5 Bedrooms
3 Bathrooms
Upstairs Living
2-Car Garage

1st Floor A/C Sq. Ft.	1,163
2nd Floor A/C Sq. Ft.	1,544
Total A/C Sq. Ft.	2,707
Covered Entry	78
Covered Lanai	112
2-Car Garage	420
Total Sq. Ft.	3,317



COMMUNITY Siteplan



1883 NW 7th Street, Pompano Beach, FL 33068
754.254.3535 • DRHorton.com

D·R·HORTON®
America's Builder



HUNTERS MANOR

D.R. Horton is equal housing opportunity builder. Home and community information, including pricing, included features, terms, availability and amenities, are subject to change and prior sale at any time without notice or obligation. Pictures, photographs, features, colors, drawings, floor plans, square footages and sizes are approximate for illustration purposes only and will vary from the homes as built. All drawings are the artist's concept. Buyer should conduct his or her own investigation of the present and future availability of school districts and school assignments. D.R. Horton has no control or responsibility for any changes to school districts or school assignments should they occur in the future. Home Is Connected, A smart home is a convenient home setup where appliances and devices can be automatically controlled remotely from any internet-connected place using a mobile or other networked device. Maps are not to scale. Certified General Contractor License Number CGC05939. ©D.R. Horton, Inc. 2025. All rights reserved.