

Highlands at Chapel Creek

Interior Features

- Home isSM Connected-America's Smart HomeSM (See Reverse side for details)
- Matching cabinets throughout the home with 30" upper kitchen cabinets and 36" vanity cabinets in baths (excluding powder baths)
- Ceramic tile flooring at Entry, Hallways (per plan), Family Room, Kitchen/Breakfast, Utility and Bathrooms
- Plush carpet with 3/8" pad
- Cultured marble vanity tops in bathrooms
- Large plate mirrors above bath vanities
- Bath 1 shower with tile surround
- 5' tub with tile shower surround in secondary baths
- Elongated commodes in all baths
- Coordinating lighting package
- Moen® chrome finish plumbing fixtures with lifetime warranty throughout
- Kwikset® brushed nickel interior & exterior door hardware
- Eased corners including window returns
- Wood shelving in all closets, pantry and utility room for optimal storage use
- Raised panel doors
- Family Room, Bedroom 1 and Game Room (per plan) blocked for future ceiling fans
- 4 total drops for phone and/or cable (location per plan)
- GFI outlets near wet areas of kitchen and baths
- Smoke/carbon monoxide detector(s) installed per code

Kitchen Features

- Pre-finished 30" flat panel cabinets with crown molding
- Stainless steel appliances (microwave with exterior vented hood, dishwasher & gas range)
- Granite countertops with 4" granite splash
- Stainless steel drop-in kitchen sink with garbage disposal
- 4 LED puck lights in kitchen ceiling

Exterior Features

- Landscape Package (including full sod front/sides/back)
- Full sprinkler system with rain sensor
- 6' Fully fenced rear yard with gate
- Covered Patio or Concrete Patio Stoop 4'x4' (plan specific)
- Clay kiln-fired brick with fiber cement exterior siding and trim
- 3-tab shingles with 25 yr. manufacture warranty
- Cast stone address plaque
- 6'8" Raised panel front door
- Divided lite windows at front of home
- Partial guttering
- Light at front elevation (location per plan)
- Decorative hardware on garage door

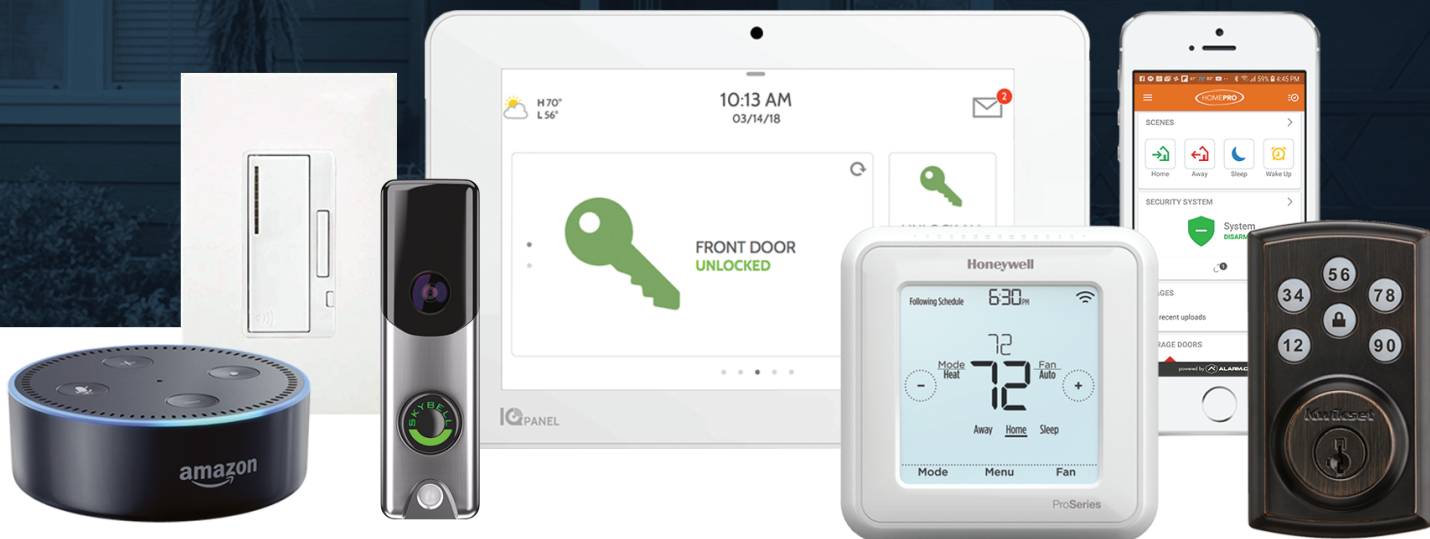
Construction & Energy Features

- High-efficiency 16 SEER Carrier® heating/cooling system with Honeywell T6 Pro Z-Wave™ thermostat
- Gas central heating
- Tankless water heater
- Square D™ surge protection
- Synthetic roofing underlayment
- Double pane, Low-E, vinyl windows with argon gas
- Third party quality inspections for framing
- 10 Year Homebuyer's Warranty
- 2 year limited Mechanical Warranty
- R-13 fiberglass insulation in exterior walls
- R-19 insulation at sloped ceilings
- R-38 fiberglass insulation in flat ceiling areas
- Fully sheetrock and painted garage
- Engineered post tension foundation
- Poly moisture barrier beneath slab
- Taexx built-in pest control system
- Borate application to protect building materials against wood destroying insects

drhorton.com/texas/fort-worth

D.R. Horton is an Equal Opportunity Builder. Home and community information including pricing, features, terms and availability are subject to change prior to sale at any time without notice or obligation. Prices, plans, features and options are subject to change without notice. Additional restrictions may apply. Please check the accuracy of information provided with your Sales Counselor prior to purchasing. Features noted above could be plan specific. Rev. 6.1.22

Home isSM CONNECTED



YOU'LL NEVER BE TOO FAR FROM HOME.

Monitor and control your home from your couch or from 500 miles away. Connect to your home with your smartphone, tablet or computer.

HOME LIFE CAN BE HANDS-FREE.

It's never been easier to settle into a new routine. Set the scene with your voice, from your phone, through the Qolsys panel – or schedule it and forget it. Your home will always be there for you.

NO MORE BOXES OF USELESS TECH.

Our priority is to make sure you have the right smart home system to grow with you. Our homes speak to Bluetooth, Wi-Fi, Z-Wave and cellular devices so you can sync with almost any smart device.

D.R. Horton is an Equal Opportunity Builder. A D.R. Horton Smart Home is equipped with technology that includes the following: a Z-Wave programmable thermostat manufactured by Honeywell; a Z-Wave door lock manufactured by Kwikset; a Smart Switch; a Qolsys, Inc. touchscreen Smart Home control device; an automation platform from Alarm.com; a SkyBell video doorbell; and an Amazon Echo Dot. D.R. Horton reserves the right, without prior notice, to substitute other products for those listed above. Other Smart Home technology features may be offered for an additional charge. For Smart Home technology included in the home to work, homeowners must obtain and pay for their own Internet service and may need to purchase compatible devices and to maintain accounts with third parties for the services. D.R. Horton makes no representation or warranty that any or all of the Smart Home technology is secure, will meet any homeowner needs or will provide any level of physical or cyber security for the home – even if the technology is working as intended. All photos and drawings are for illustration purposes only. See a D.R. Horton sales agent for complete information. D.R. Horton is a registered trademark of D.R. Horton Management Company, Ltd. All other trademarks shown are the property of their respective owners. Amazon, Echo, Alexa, and all related logos are trademarks of Amazon.com, Inc. or its affiliates.