



14086 NC-50 HWY
Surf City, NC 28445

910.742.7946

WilmingtonInfo@drhorton.com

Waterside offers smartly designed one and two story homes with beautiful included features



The design and development of the community reflects the natural environments of both land and water. Low-lying marshes, beautiful scenic lakes and ponds creates a fresh living environment that respects and embraces these wonderful community qualities. Our homes have been designed and built with a focus on quality and value, while including livable floor plans, energy efficient features, a home warranty - and the list goes on.

D·R·HORTON®
America's Builder

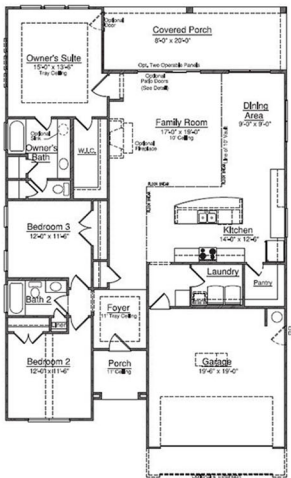
www.drhorton.com/wilmington



Home and community information, including pricing, included features, terms, availability and amenities, are subject to change and prior sale at any time without notice or obligation. ©2018 D.R. Horton, America's Builder. All Homes Constructed by D.R. Horton, Inc., License #29676.

Eaton

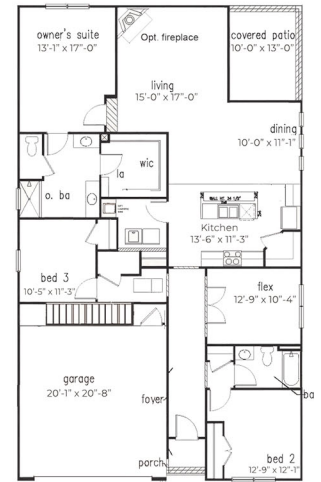
3 Bedrooms, 2 Baths
2-Car Garage, 1733 Sq. Ft.



Darby

3-4 Bedrooms, 2 Baths
2-Car Garage, 1883 Sq. Ft.

SF with Loft Opt 2,368
SF with Upstairs Game Room Opt 2,452



Litchfield

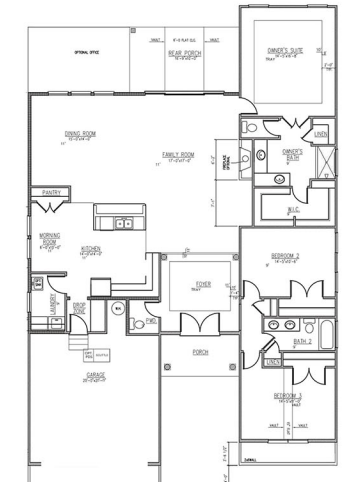
4 Bedrooms, 2 Baths
2-Car Garage, 2032 Sq. Ft.



Cumberland

3 Bedrooms, 2.5 Baths
2-Car Garage, 2188 Sq. Ft.

SF with 2nd Story Option 2,975



All of our homes include D.R. Horton's Home is Connected® package, an industry leading suite of smart home products that keeps homeowners connected with the people and place they value the most. The technology allows homeowners to monitor and control their home from the couch or across the globe. Control the thermostat, front door light and lock, and video doorbell from your smartphone or with voice commands to Alexa!



D.R. Horton is an equal housing opportunity builder. Home and community information, including pricing, included features, terms, availability and amenities, are subject to change and prior sale at any time without notice or obligation. Pictures, photographs, features, colors and sizes are approximate for illustration purposes only and will vary from the homes as built. All homes constructed by D.R. Horton, Inc. License #29676.

REV. 6.6.18

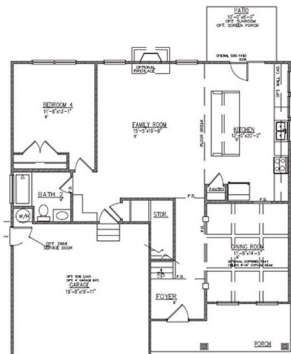
D-R HORTON
America's Builder

D.R. HORTON • EXPRESS • EMERALD • FREEDOM

© Copyright 2020 D.R. Horton, Inc.

Forrester

4 Bedrooms, 3 Baths
2-Car Garage, 2644 Sq. Ft.



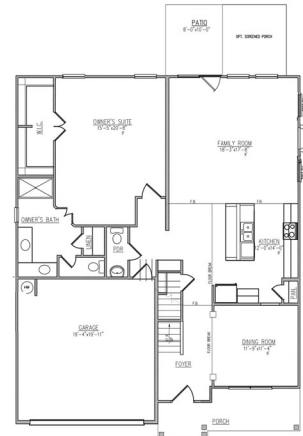
FIRST FLOOR



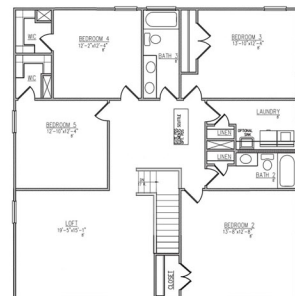
SECOND FLOOR

Tillman

5 Bedrooms, 3.5 Baths
2-Car Garage, 3066 Sq. Ft.



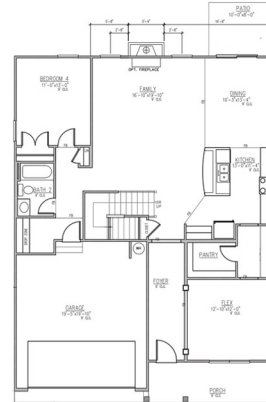
FIRST FLOOR



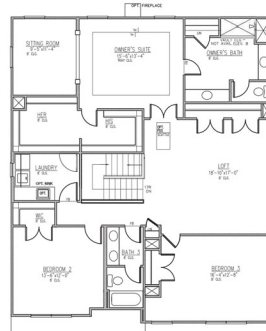
SECOND FLOOR

Harbor Oak

4 Bedrooms, 3 Baths
2-Car Garage, 3129 Sq. Ft.



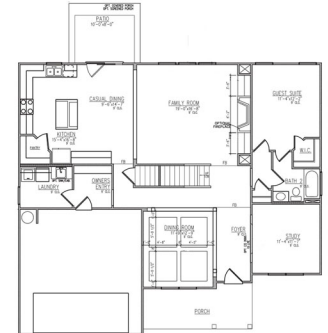
FIRST FLOOR



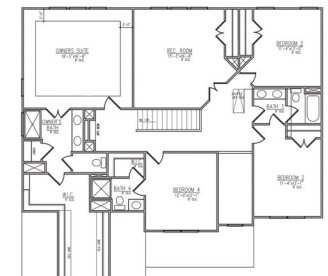
SECOND FLOOR

Wilmington

5 Bedrooms, 4 Baths
2-Car Garage, 3475 Sq. Ft.



SECOND FLOOR
FIRST FLOOR



SECOND FLOOR

REV. 6.6.18

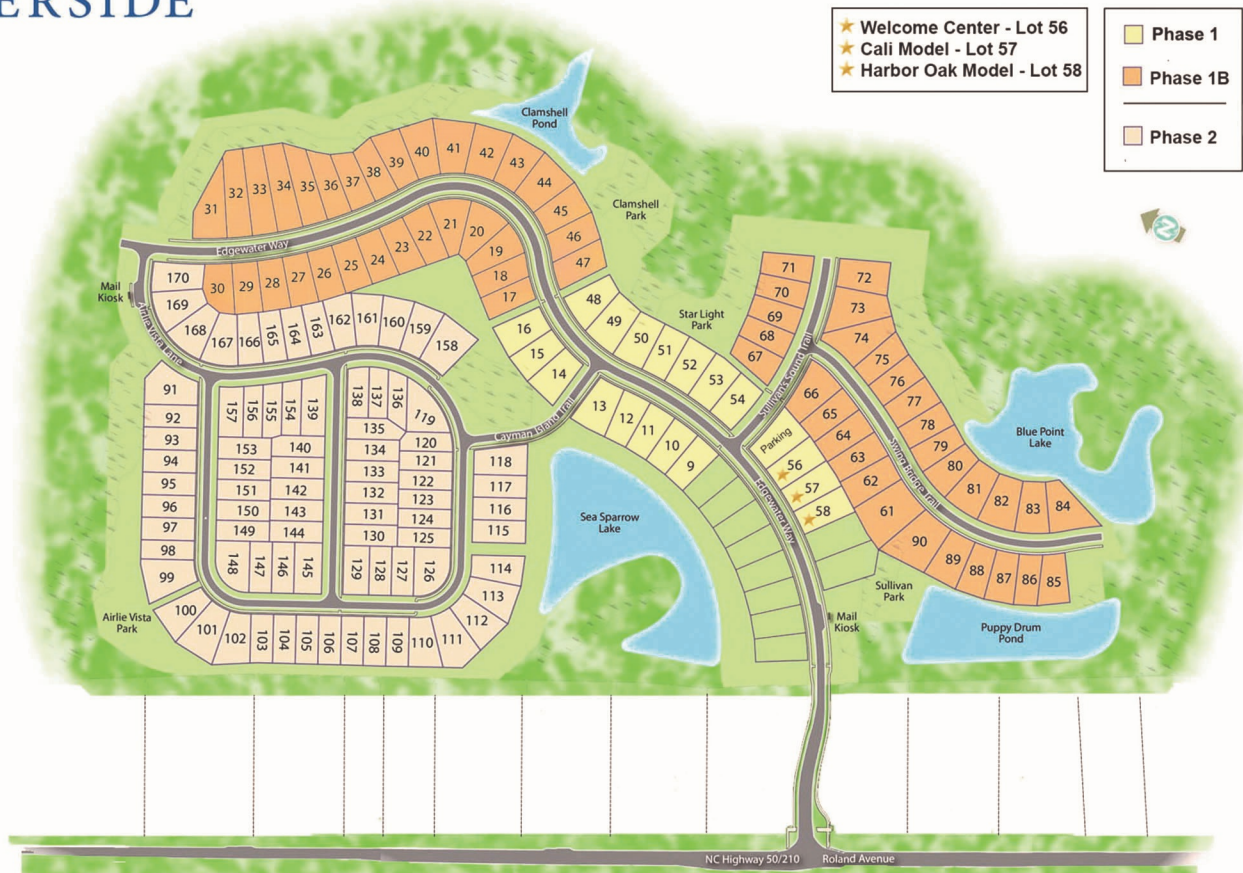
POINTS OF INTEREST

Topsail Sound and the Intracoastal Waterway separate the island from the mainland. This narrow body of water provides the perfect setting for canoeing, kayaking, water skiing and fishing. Surf City now boasts a new pedestrian friendly high-rise bridge, perfect for taking a stroll.



HOMESITES

WATERSIDE



D.R. Horton is equal housing opportunity builder. *Map is for presentation purposes only. Not drawn to scale. Home and community information, included features, terms, availability and amenities, are subject to change and prior sale at any time without notice or obligation. Square footage dimensions are approximate. All homes constructed by D.R. Horton License #29676.