



RIVERSIDE

432 Tributary Circle
Wilmington, NC 28401

910.469.1379

WilmingtonInfo@drhorton.com

The location combined with the exceptional value have made Riverside a popular choice among homebuyers.



An excellent location with exceptional value! This is a Natural Gas Community and each home includes a Tankless Water Heater. Riverside offers a central location off of I-140 and Highway 133 just minutes to Wilmington, Downtown Wilmington and area beaches. Our homes feature open concept designs, spacious rooms, beautiful interior appointments and large home sites. The location combined with the exceptional value have made Riverside a popular choice among home buyers. Don't miss out on your opportunity to call Riverside your new home.

D·R·HORTON®

America's Builder

www.drhorton.com/wilmington



Home and community information, including pricing, included features, terms, availability and amenities, are subject to change and prior sale at any time without notice or obligation. ©2023 D.R. Horton, America's Builder. All Homes Constructed by D.R. Horton, Inc., License #29676.

Kerry

3 Bedrooms, 2 Baths
2-Car Garage, 1476 Sq. Ft.



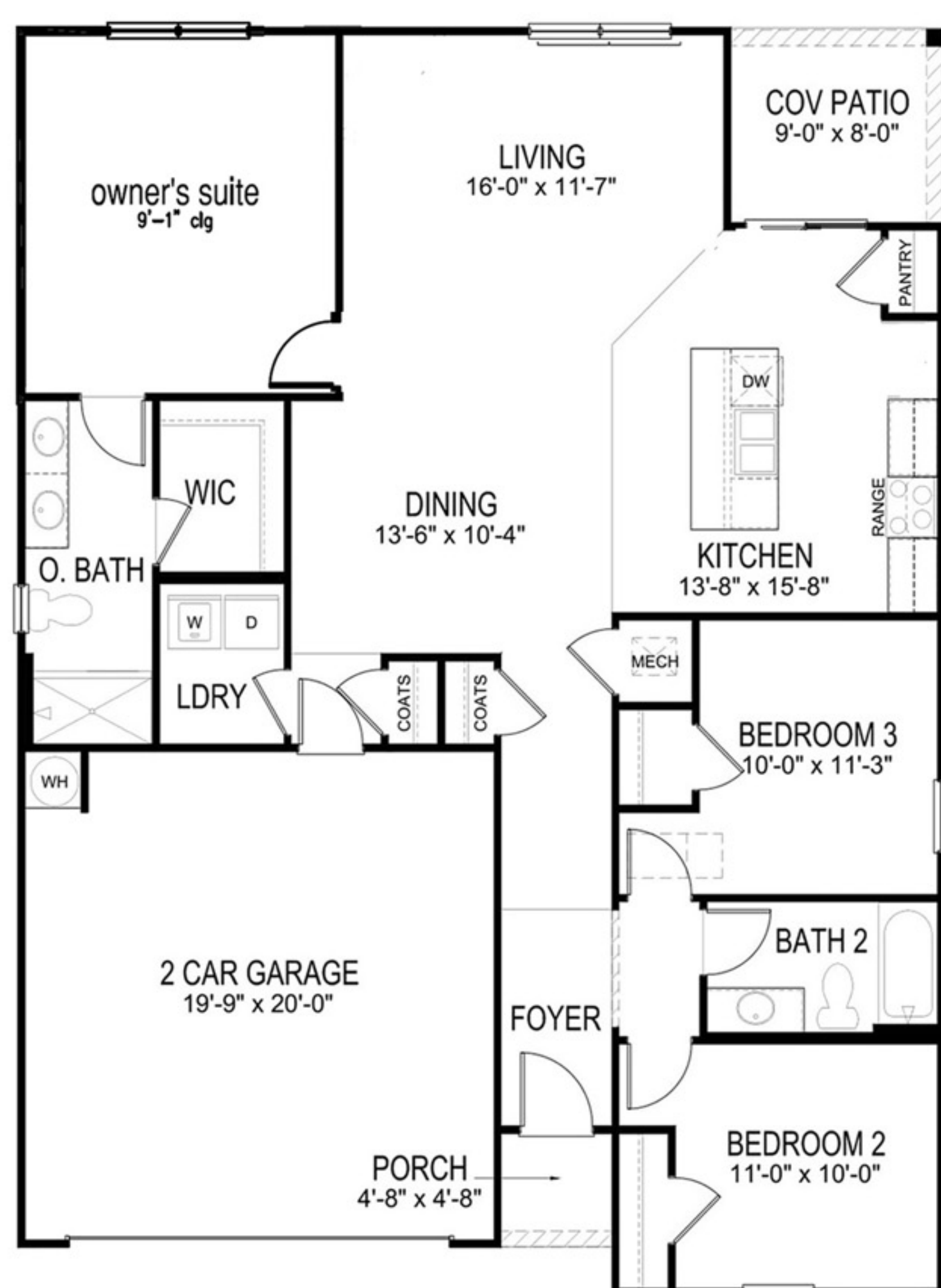
Elevation A



Elevation B



Elevation D



Aria

3 Bedrooms, 2 Baths
2-Car Garage, 1618 Sq. Ft.



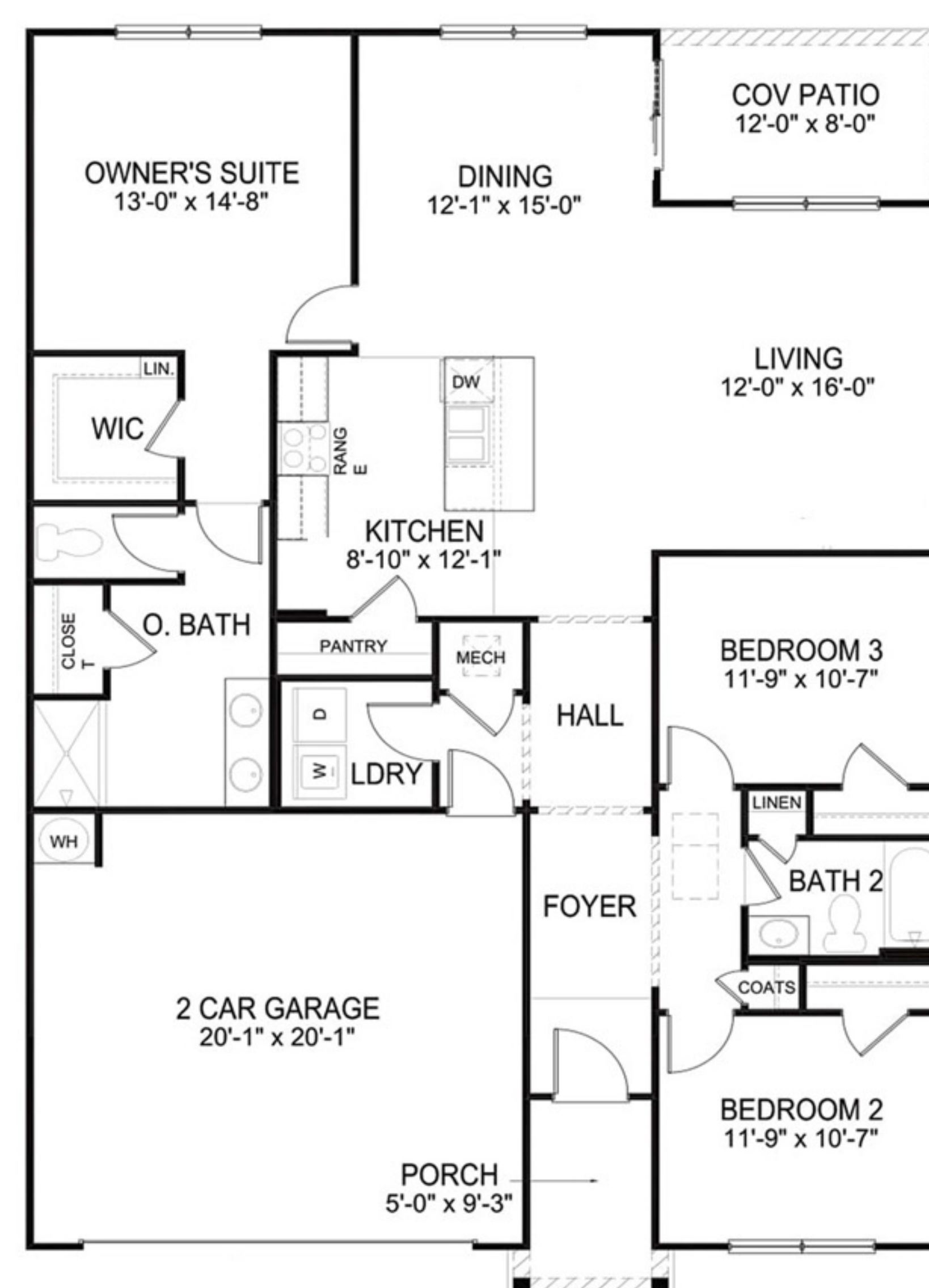
Elevation A



Elevation B



Elevation j



D.R. Horton is an equal housing opportunity builder. Home and community information, including pricing, included features, terms, availability and amenities, are subject to change and prior sale at any time without notice or obligation. Pictures, photographs, features, colors and sizes are approximate for illustration purposes only and will vary from the homes as built. All homes constructed by D.R. Horton, Inc. License #29676.

Cali

4 Bedrooms, 2 Baths
2-Car Garage, 1774 Sq. Ft.



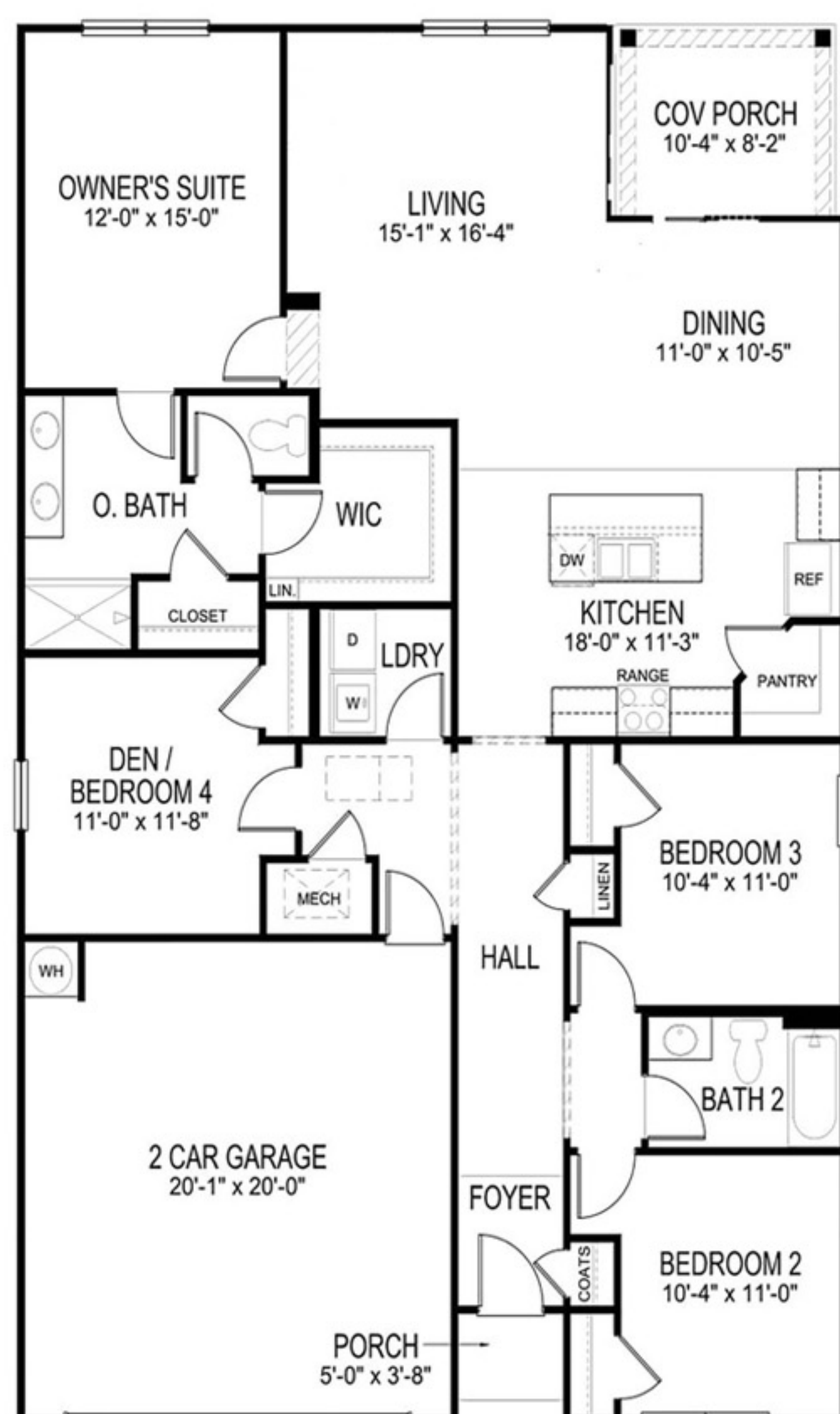
Elevation A



Elevation B



Elevation F



Galen

4 Bedrooms, 2.5 Baths
2-Car Garage, 2338 Sq. Ft.



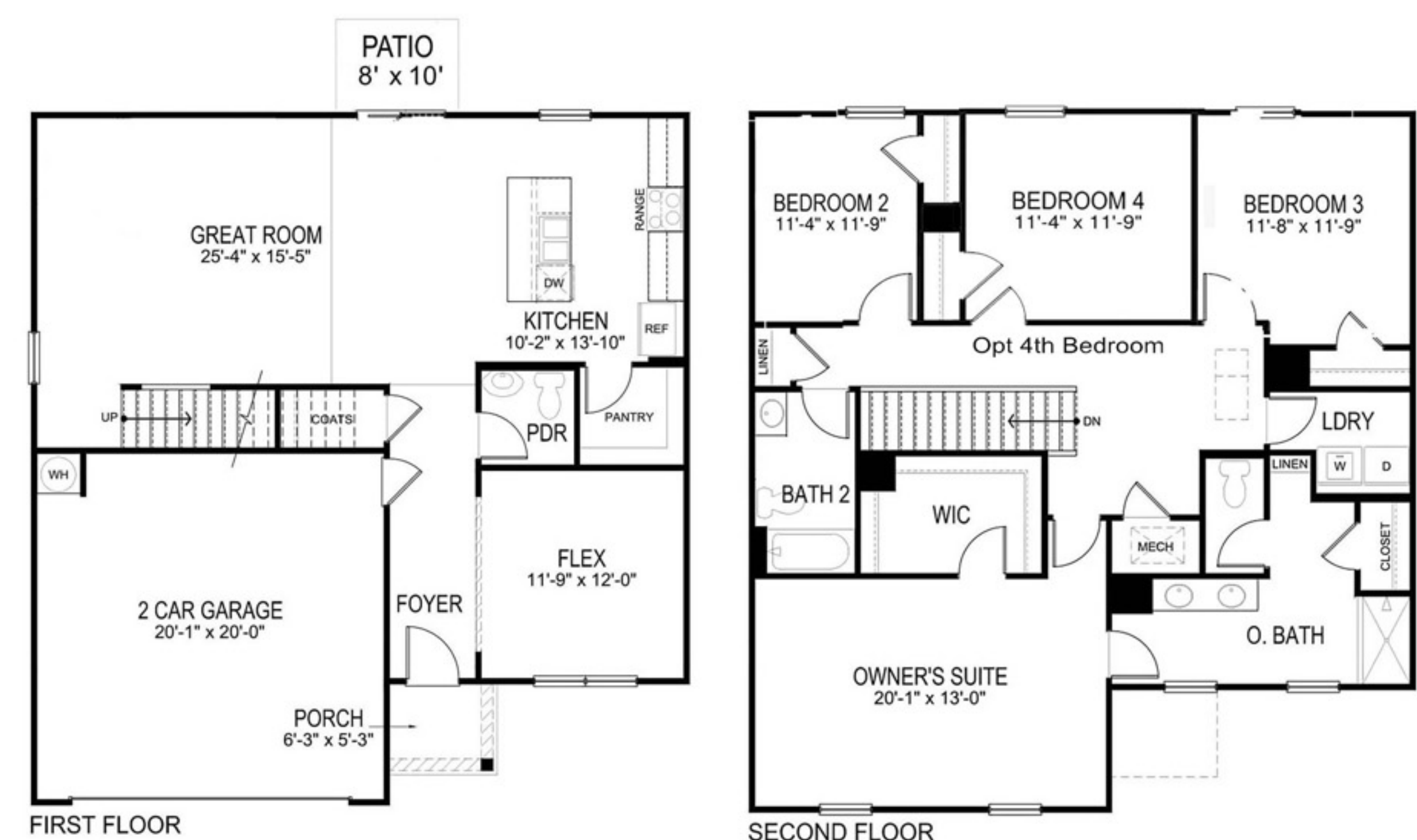
Elevation A



Elevation B



Elevation F



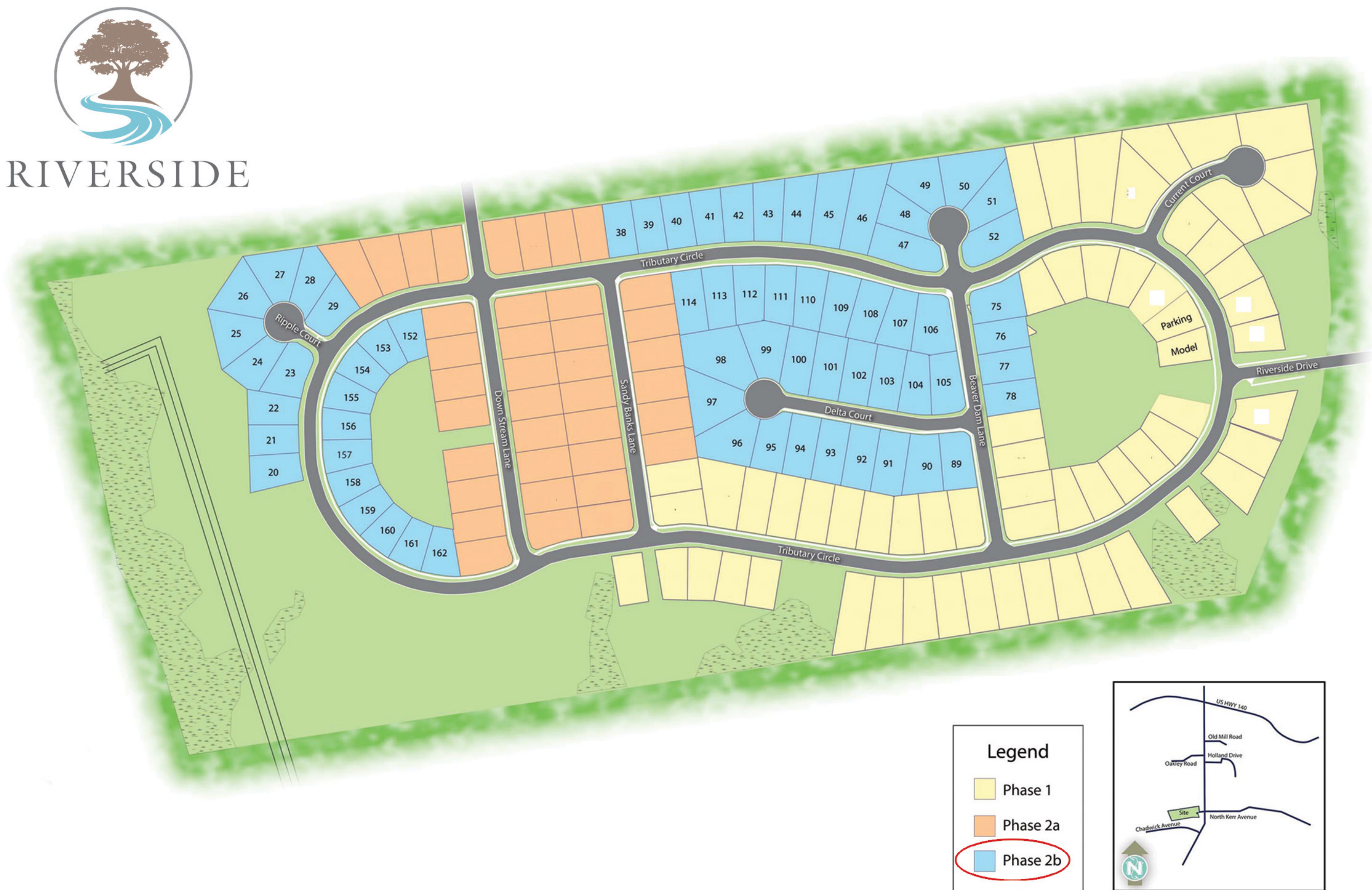
All of our homes include D.R. Horton's Home is Connected® package, an industry leading suite of smart home products that keeps homeowners connected with the people and place they value the most. The technology allows homeowners to monitor and control their home from the couch or across the globe. Control the thermostat, front door light and lock, and video doorbell from your smartphone or with voice commands to Alexa!

AREAS OF INTEREST



You'll love Wilmington's riverfront, historic downtown, beaches and everything in between. Enjoy our relaxed coastal lifestyle.

HOMESITES



Map is for presentation purposes only. Not drawn to scale.