



**HAMPSHIRE**  
3,119 Sq. Ft.<sup>^</sup>  
4 Bed | 3 Bath  
2-Car Garage



**WILSON**  
3,211 Sq. Ft.<sup>^</sup>  
4 Bed | 3.5 Bath  
2-Car Garage



**GRANT**  
3,379 Sq. Ft.<sup>^</sup>  
4 Bed | 4 Bath  
3-Car Garage



**WASHINGTON**  
3,473 Sq. Ft.<sup>^</sup>  
5 Bed | 4 Bath  
2-Car Garage

## NEW ESTATE HOMES

Desirable location in Mebane, NC  
Innovative Single Story Homes from 3,119-3,473 sq. ft.<sup>^</sup>  
Spacious 4-5 Bedrooms with 2-3 Car Garages

### INCLUDED FEATURES:

Stainless Steel Appliances, Granite Countertops  
Home is Connected™, America's Smart Home<sup>SM\*</sup>  
Crawl Space Foundation, Revwood Flooring

### AMENITIES:

Clubhouse, Pool, Park Space, and more!

## Cambridge Park Signature Collection • Mebane, NC • 336-814-9778

D.R. Horton is equal housing opportunity builder. Home and community information, including pricing, included features, terms, availability and amenities are subject to change or prior sale at any time without notice or obligation. <sup>^</sup>Square footage dimensions are approximate. Pictures, photographs, colors, features, and sizes are for illustration purposes only and will vary from the homes as built. \*Homes are equipped with the following: Z-Wave programmable thermostat manufactured by Honeywell; Z-Wave door lock manufactured by Kwikset, Z-Wave wireless switch manufactured by Easton Corporation, Qolsys, Inc. touchscreen Smart Home control device; automation platform from Alarm.com, SkyBell video doorbell and Amazon Echo Dot. D.R. Horton reserves the right, without prior notice, to substitute other products for those listed above. Other Smart Home technology features may be offered for an additional charge. For Smart Home technology included in the home to work, homeowners must obtain and pay for their own internet service and may need to purchase compatible devices to maintain accounts with third parties for the services. D.R. Horton makes no representation or warranty that any or all of the Smart Home technology is secure, will meet any homeowners needs or will provide any level of physical or cyber security for the home even if the technology is working as intended. Amazon, Inc. does not in any way sponsor or endorse this promotion or the products or services of D.R. Horton, Inc. Equal Housing Opportunity. All homes are constructed by D.R. Horton, Inc. NC GC License #29676.

**3,143** SQ. FT. | **4** BED **3.5** BATH **2** STORY **2** CAR



Elevation G

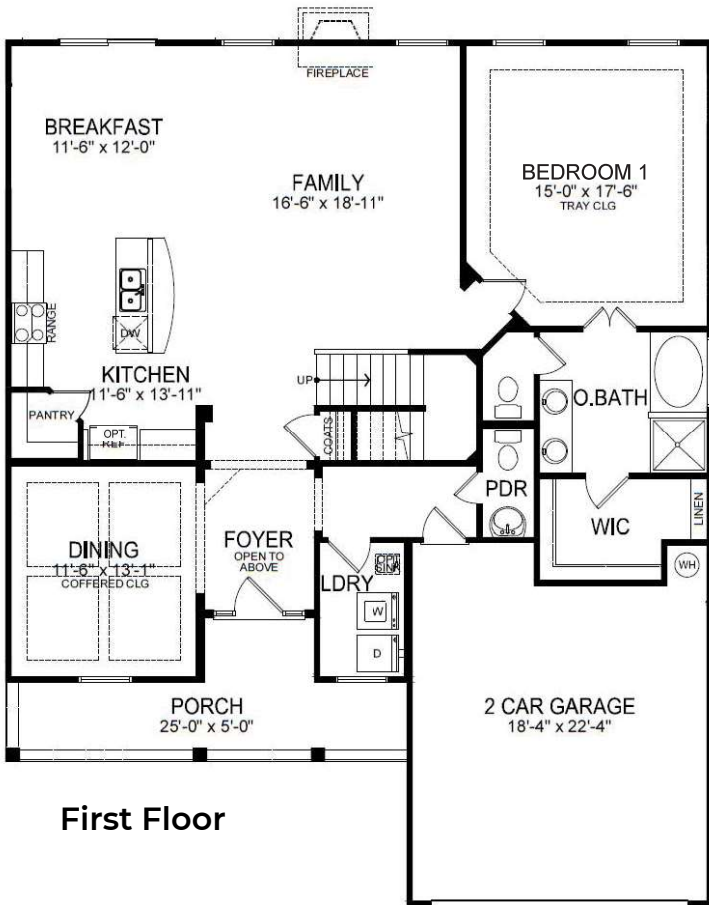


Elevation H

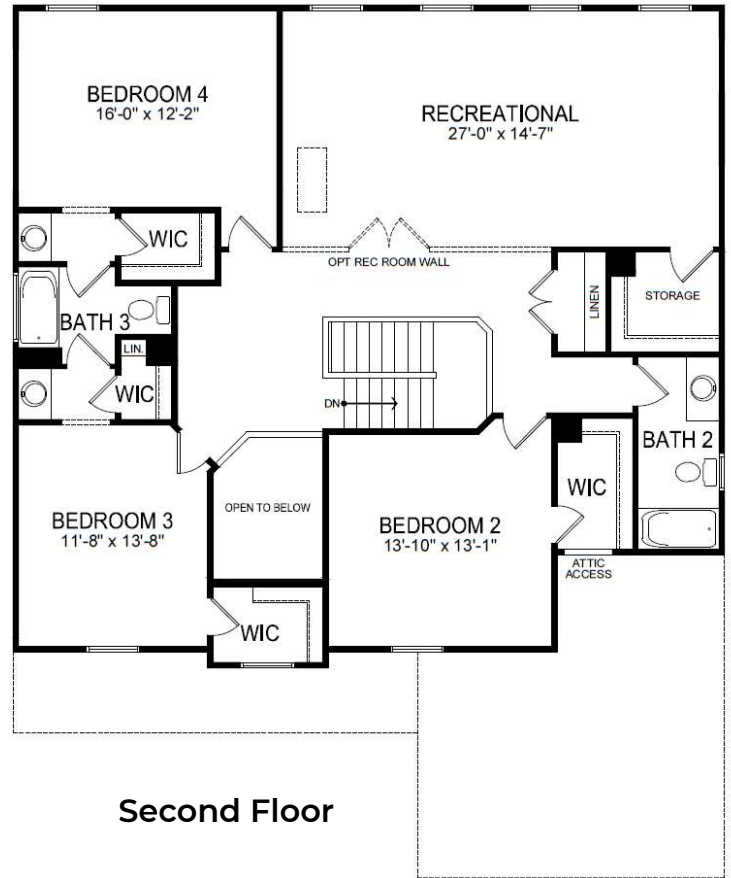


Elevation I

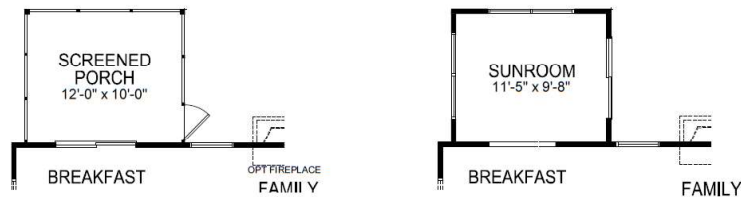
D.R. Horton is an Equal Housing Opportunity Builder. Home and community information, including pricing, included features, terms, availability and amenities, are subject to change and prior sale at any time without notice or obligation. Pictures, photographs, colors, features, and sizes are for illustration purposes only and will vary from the homes as built. Square footage dimensions are approximate. Buyer should conduct his or her own investigation of the present and future availability of school districts and school assignments. D.R. Horton has no control or responsibility for any changes to school districts or school assignments should they occur in the future. REV 1.12.2020



**First Floor**



**Second Floor**



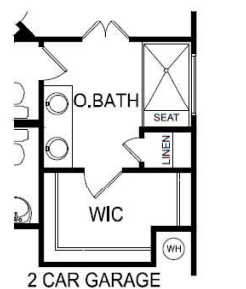
**OPT SCREENED PORCH**

**OPT SUNROOM**

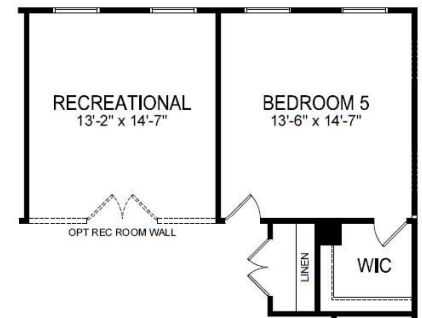


**OPT COVERED PORCH**

**OPT STUDY**



**OPT LUXURY OWNER'S SHOWER**



**OPT BEDROOM 5**

**3,366 SQ. FT. | 5 BED 4 BATH 2 STORY 3 CAR**



Elevation A

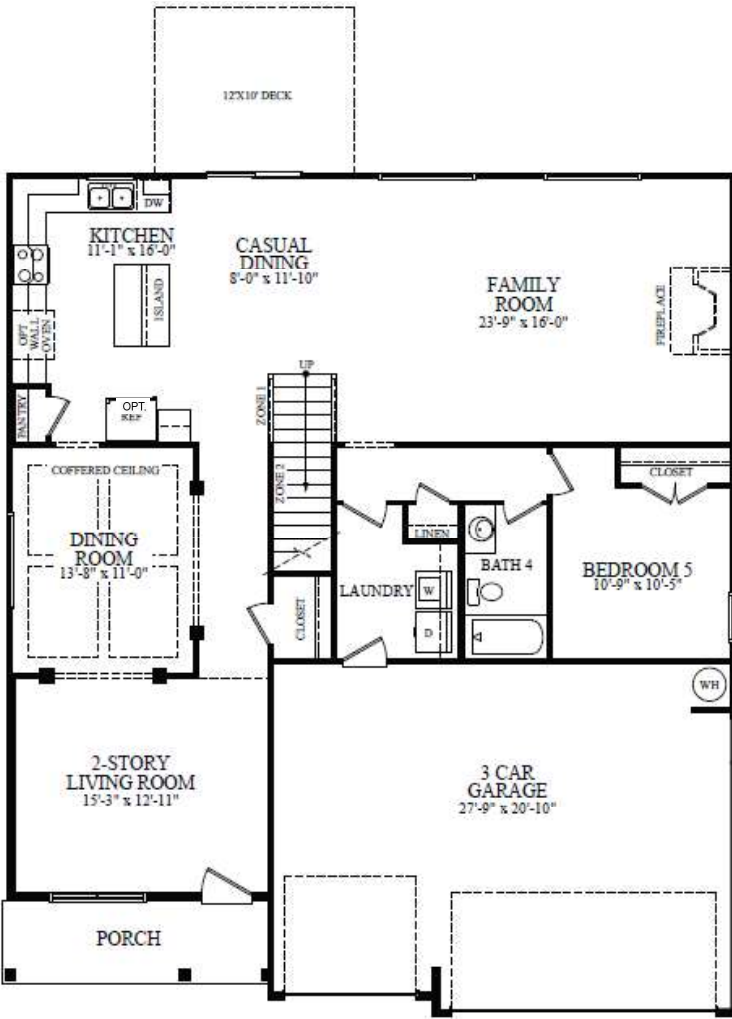


Elevation B

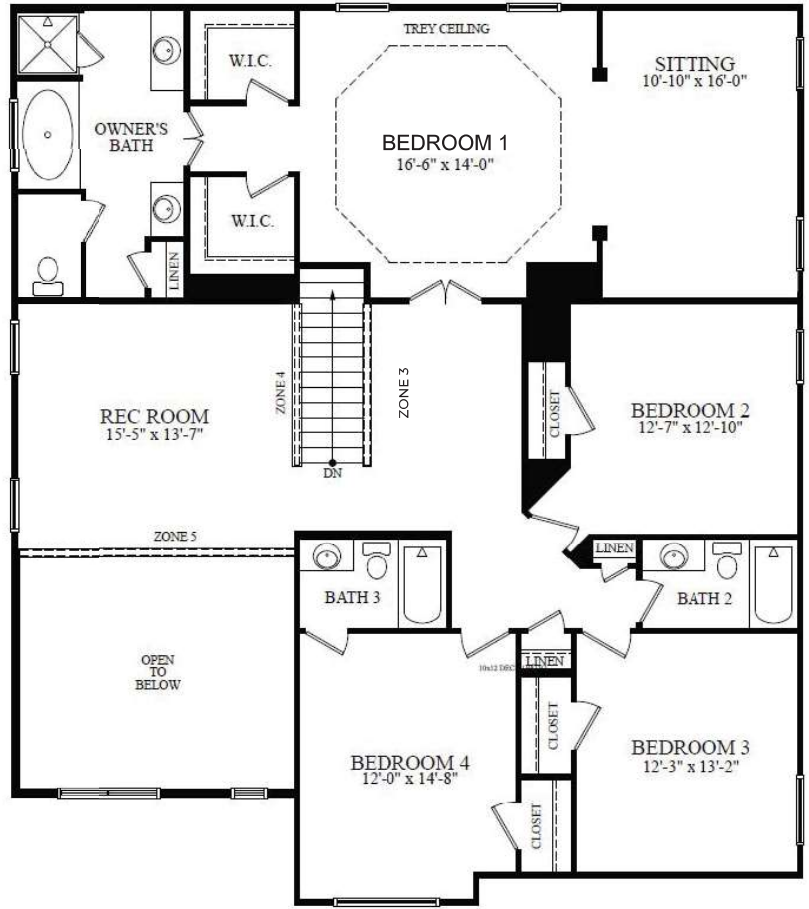


Elevation C

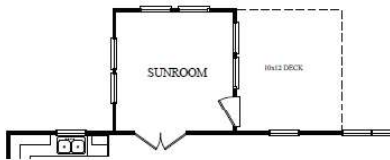
D.R. Horton is an Equal Housing Opportunity Builder. Home and community information, including pricing, included features, terms, availability and amenities, are subject to change and prior sale at any time without notice or obligation. Pictures, photographs, colors, features, and sizes are for illustration purposes only and will vary from the homes as built. Square footage dimensions are approximate. Buyer should conduct his or her own investigation of the present and future availability of school districts and school assignments. D.R. Horton has no control or responsibility for any changes to school districts or school assignments should they occur in the future. REV 1.12.2020



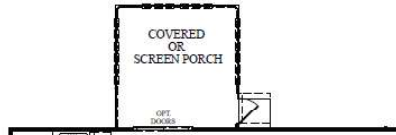
**FIRST FLOOR**



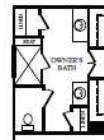
**SECOND FLOOR**



*Opt Sunroom*



*Opt Covered/Screened Porch*



*Opt Luxury Owner's Shower*



*Opt Second Floor Plan w/ Bedroom 6*



*Second Floor Plan w/ Rec Room*

3,456 SQ. FT. | 5 BED 4 BATH 2 STORY 2 CAR



Elevation C



Elevation E

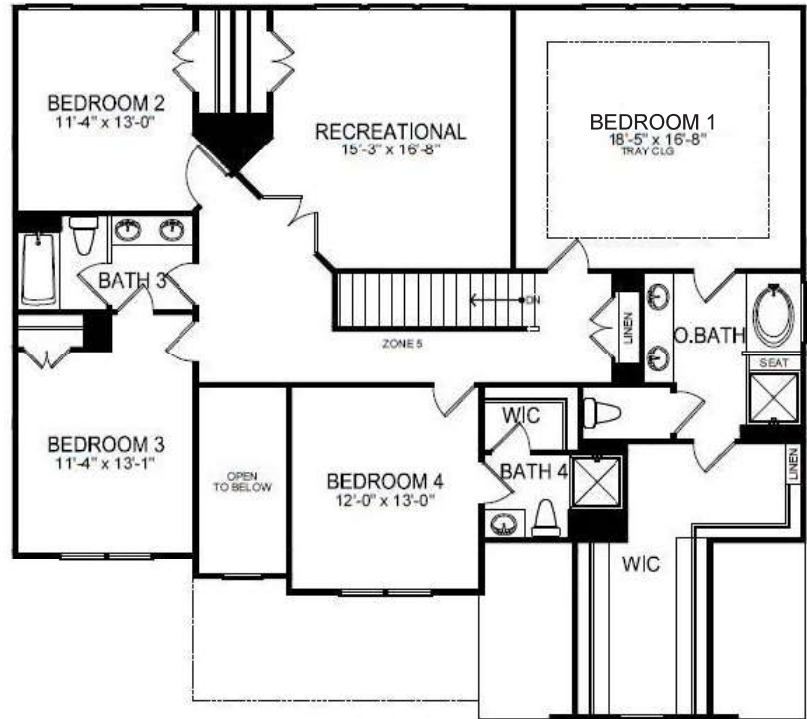


Elevation G



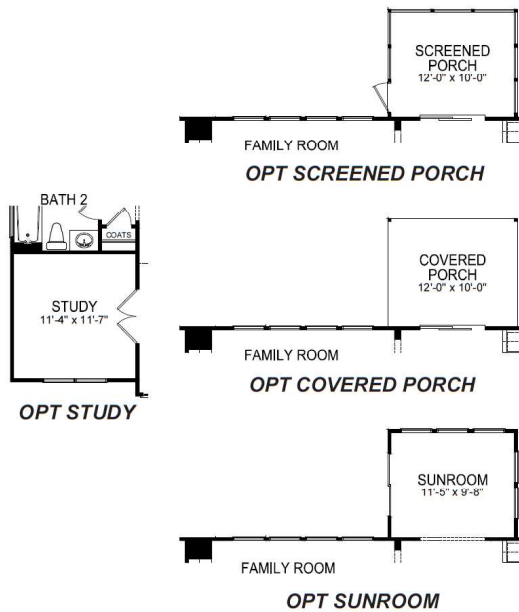
Elevation H

D.R. Horton is an Equal Housing Opportunity Builder. Home and community information, including pricing, included features, terms, availability and amenities, are subject to change and prior sale at any time without notice or obligation. Pictures, photographs, colors, features, and sizes are for illustration purposes only and will vary from the homes as built. Square footage dimensions are approximate. Buyer should conduct his or her own investigation of the present and future availability of school districts and school assignments. D.R. Horton has no control or responsibility for any changes to school districts or school assignments should they occur in the future. REV 1.12.2020



**First Floor**

**Second Floor**



**3,133** SQ. FT. | **4** BED **3** BATH **2** STORY **2** CAR



Elevation A



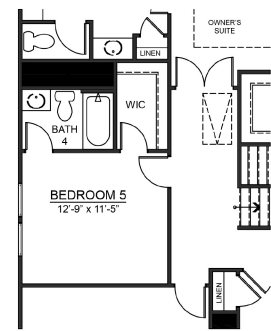
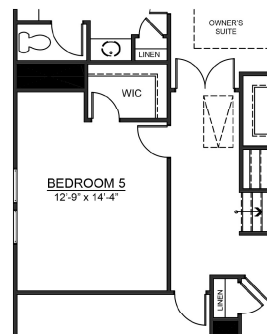
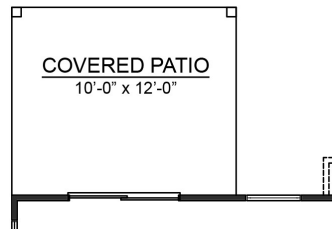
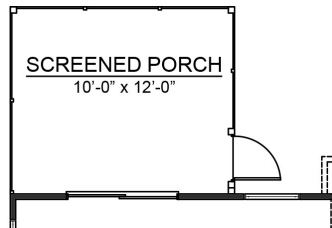
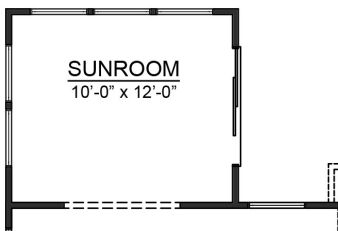
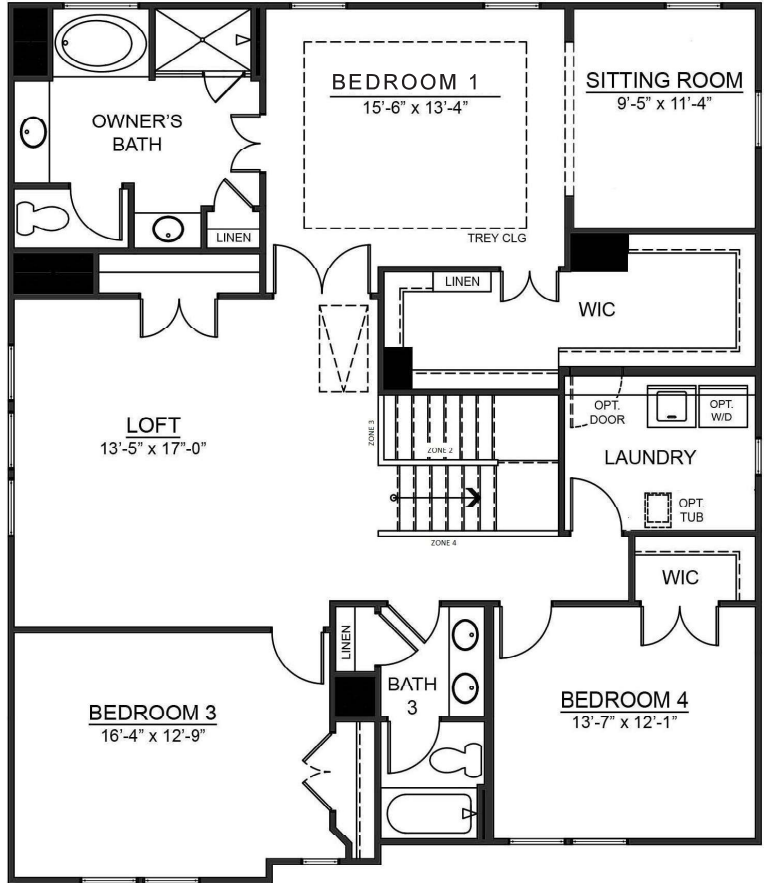
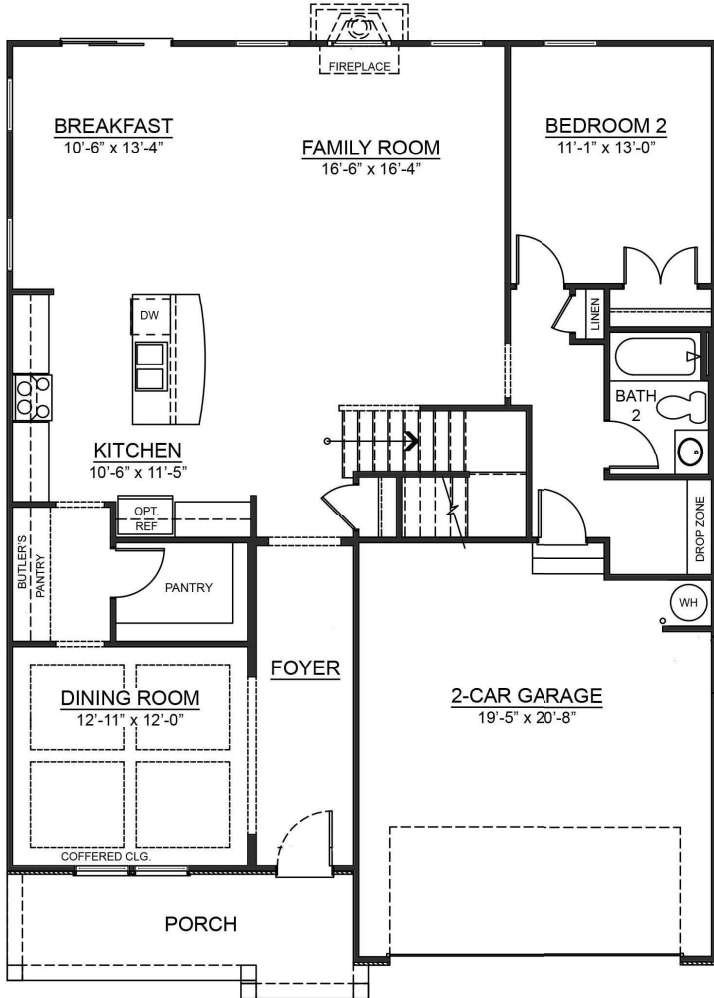
Elevation C



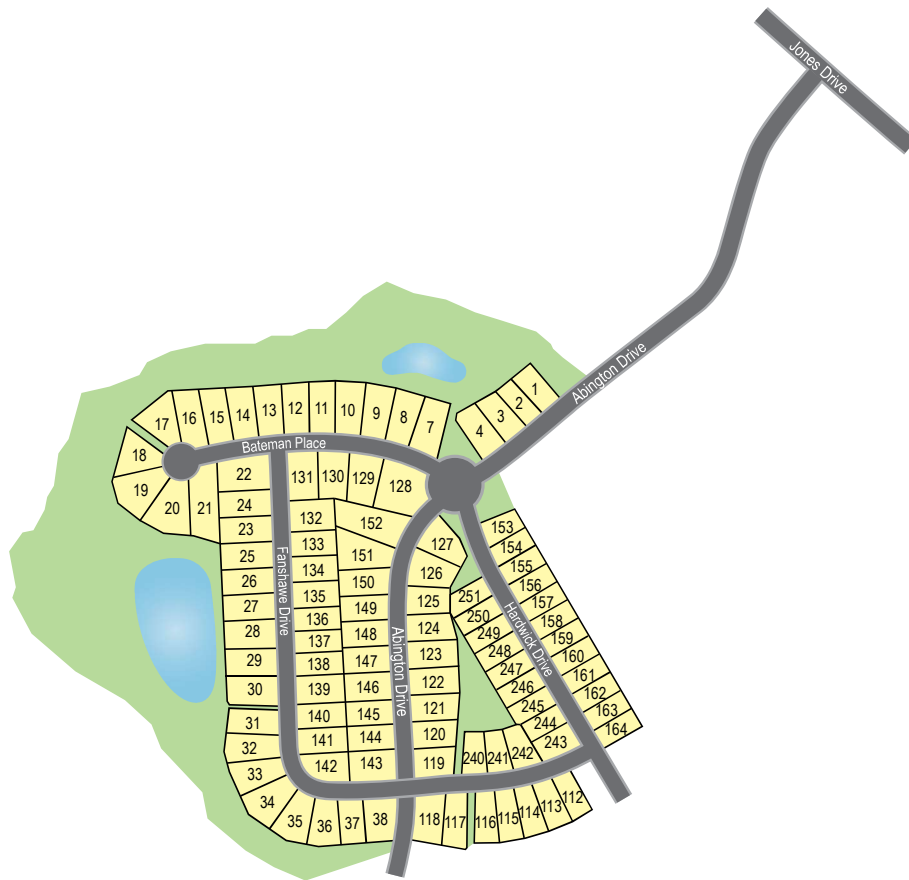
Elevation D

D.R. Horton is an Equal Housing Opportunity Builder. Home and community information, including pricing, included features, terms, availability and amenities, are subject to change and prior sale at any time without notice or obligation. Pictures, photographs, colors, features, and sizes are for illustration purposes only and will vary from the homes as built. Square footage dimensions are approximate. Buyer should conduct his or her own investigation of the present and future availability of school districts and school assignments. D.R. Horton has no control or responsibility for any changes to school districts or school assignments should they occur in the future. REV 1.12.2020





# COMMUNITY MAP



Drawing is an artist's rendering and therefore is approximate, for illustration purposes only and is not to scale. It is not intended to represent current or future conditions, improvements, amenities or other features of this community. Reference should be made to recorded plats, maps and governmental approvals, any or all of which may be modified in the future. D.R. Horton makes no representation concerning current or future use of the adjacent properties or the completion of future phases of this community including features, amenities and facilities. All information is subject to change without notice or obligation. 7/24/21



**D·R·HORTON**  
America's Builder

CAMBRIDGE PARK

DRHORTON.COM

# CAMBRIDGE PARK

## Signature Series

### Impressive Exteriors

- Professionally installed landscape package with sodded front yards
- Architecturally coordinated Hardi Plank exterior colors with cultured ledge stone/brick veneer, per plan
- Engineered crawl foundations with 10x12 deck (10x12 deck optional with optional Screened or Covered Porch)
- 2 car garage with drywall and paint
- Electric garage door opener(s) with remotes, per plan
- Coach lights, per plan
- Quality architectural shingles
- Seamless aluminum gutters and downspouts
- Quality fiberglass 2 panel 3-lite smooth front door
- Brushed nickel door hardware
- Two all-weather electrical outlets per code/ two exterior water faucets per plan

### Interior Highlights

- 9' Ceilings on first floor with smooth finish and Sherwin Williams® First Star paint
- Direct vent gas fireplace in family room with mantel and black slate surround
- Revwood flooring on 1st floor except wet areas and bedrooms
- Plush carpet with 5.5 LB carpet pad
- Two-panel, square interior doors
- Crown molding on first floor except baths, closets and laundry
- 2 ¼" door & window casing
- 5 ¼" Base boards first floor and 3 ¼" on the second floor
- Tile flooring in the laundry room
- Open rail on first 3 to 5 stairs, handrail to be stained to match floors with painted wood spindles, per plan
- Electric washer and dryer connections
- Stefon lighting package throughout home
- Ceiling fan prewires family room and all bedrooms
- Ventilated wire shelving system in all closets

### Luxurious Bathrooms and Bedrooms

- Spacious owner's suite with tray ceiling with crown molding on the inside, per plan
- Overhead lighting in all secondary bedrooms
- Deluxe owner's bath with dual vanity, garden tub, separate Shower (fiberglass pan) w/tile surround (knee wall glass between)

### Luxurious Bathrooms and Bedrooms Cont.

- Fiberglass tub/shower in secondary baths
- Moen® Eva brushed nickel faucets in all baths
- Elongated toilets throughout
- Cultured marble vanity tops in all baths
- Tile flooring in all bathrooms
- Raised height flat panel birch cabinets in all baths
- Brushed nickel trim and hardware
- Pedestal sink and framed mirror in powder room
- Bath fans ventilated to the exterior

### Exceptional Kitchens

- Whirlpool® stainless steel appliances to include gas range, dishwasher and microwave
- 42" Birch cabinets with 2 ¼" crown molding, cabinetry above the refrigerator and decorative hardware
- Granite kitchen countertops and tile backsplash
- Stainless steel single bowl sink with Moen® Arbor one handle stainless faucet
- LED lighting package
- Ice-Maker plumbing

### Home is Connected...

- Alarm.com App
- 3QOLSYS IQ panel
- Honeywell T6 Pro Z-Wave™ thermostat
- Amazon Echo Show 5 and Echo Dot
- Kwikset SmartCode888 deadbolt @ front door
- Eaton Z-Wave Switch @ front door
- Skybell video doorbell
- Structured wiring package with canister and three located cable outlets and one phone outlet

### Construction, Safety and Energy Features

- Surge protection on major appliances(upgrades available)
- Natural gas heating and central air conditioning
- Insulated to high energy standards
- 14 Seer HVAC system
- Double pane, single hung, low-E windows with screens
- Rinnai tankless water heater
- Carbon monoxide and smoke detectors per plan
- Comprehensive warranty: One Year DR Horton includes 30 day and 11 month service and 10 year structural warranty with RWC, a nationally recognized warranty company
- Three personalized meetings with the community builder based on stage of construction and home purchase agreement date; pre-construction, pre-Drywall, and pre-Closing meetings

Buyer's Initials \_\_\_\_\_ Date \_\_\_\_\_

Buyer's Initials \_\_\_\_\_ Date \_\_\_\_\_

D.R. Horton reserves the right to revise, change and/or substitute products, and features of equal or greater value, dimensions, specifications and architectural details without prior notification. \*Home and community information, including pricing, included features, terms, availability and amenities are subject to change and prior sale at any time without notice or obligation. \*\*Dimensions are approximate. Updated:3.16.2021

# WELCOME TO AMERICA'S SMART HOME®

*Home is*  
CONNECTED

## **YOU'LL NEVER BE TOO FAR FROM HOME**

Monitor and control your home from your couch or from 500 miles away. Connect to your home with your smartphone, tablet or computer.

## **HOMELIFE CAN BE HANDS-FREE**

It's never been easier to settle into a new routine. Set the scene with your voice, from your phone, through the Qolsys panel – or schedule it and forget it. Your home will always be ready for you.

## **NO MORE BOXES OF USELESS TECH**

We wanted to make sure you have the right system that can grow with you. Our homes speak to Bluetooth, Wi-Fi, Z-Wave and cellular devices, allowing you to sync with almost any smart device.

Visit [drhorton.com/smart-home](http://drhorton.com/smart-home) to see what's behind the door of your new smart home.

D.R. Horton is an Equal Housing Opportunity Builder. A D.R. Horton Smart Home is equipped with technology that includes the following: a Z-Wave programmable thermostat manufactured by Honeywell; a Z-Wave door lock manufactured by Kwikset; a Smart Switch; a Qolsys, Inc. touchscreen Smart Home control device; an automation platform from Alarm.com; a SkyBell video doorbell; an Amazon Echo Dot. D.R. Horton reserves the right, without prior notice, to substitute other products for those listed above. Other Smart Home technology features may be offered for an additional charge. For Smart Home technology included in the home to work, homeowners must obtain and pay for their own Internet service and may need to purchase compatible devices and to maintain accounts with third parties for the services. D.R. Horton makes no representation or warranty that any or all of the Smart Home technology is secure, will meet any homeowner needs or will provide any level of physical or cyber security for the home – even if the technology is working as intended. All photos and drawings are for illustration purposes only. See a D.R. Horton sales agent for complete information. D.R. Horton is a registered trademark of D.R. Horton Management Company, Ltd. All other trademarks shown are the property of their respective owners. Amazon, Echo, Alexa, and all related logos are trademarks of Amazon.com, Inc. or its affiliates.

# THE TECHNOLOGY BEHIND AMERICA'S SMART HOME®

## INTRODUCING HOME IS CONNECTED®

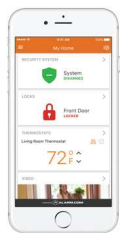
You will never be too far from home with Home Is Connected.® Your new home is built with an industry-leading suite of smart home products that keep you connected with the people and place you value most.

Talk to a new home sales representative today.



### Qolsys IQ Panel

The Qolsys panel is the central hub that talks to all the devices of your smart home. This award-winning panel bridges the entire suite of products with Bluetooth capability, Wi-Fi integration, Z-Wave access, and cellular connectivity.



### Alarm.com App

Alarm.com is the heartbeat of the entire smart home system. This simple, one app solution brings the Home Is Connected® system together, so no matter where you are, your home is at your fingertips.



### Amazon Echo Dot

Control your home with your voice and experience hands-free convenience with the Amazon Echo Dot. Just ask Alexa to play music, change your home's temperature, read the news, share the weather, and more.



### SkyBell

Greet your guests from your smart phone with Skybell, the smart video doorbell that allows you to see, hear and talk to whoever comes to your door.



### Kwikset SmartCode888

Control your door even if you're not home. Lock and unlock your front door by entering your key code, or from your smart device.



### Honeywell T6 Pro Z-Wave Thermostat

Set the perfect temperature before you get home. The Honeywell thermostat lets you cool or heat your home using your smartphone, Qolsys panel, voice, or the thermostat itself.



### Smart Switch

Bring your home to life in the evenings. If you're on the go or on the couch, the Smart Switch can be turned on with your voice or smartphone.