

**BELLWOOD**



# BEAUTIFUL NEW COMMUNITY!

## New Single-Family Homes

3 Floorplans to choose from

2-4 Bedrooms | 2-Car Garages | 1,673 - 1,883 Sq. Ft.<sup>^</sup>

Stainless Steel Appliances | Granite or Quartz Countertops | Revwood Flooring

Optional 2nd Floor with Bonus Room, Full Bath, and Bedroom

Home Is Connected<sup>®</sup> America's Smart Home<sup>SM\*</sup>  
Bellwood • Bordeaux Drive Trinity, NC | 336.560.9853

D.R. Horton is equal housing opportunity builder. 1-As reported by Builder magazine. Home and community information, including pricing, included features, terms, availability and amenities, are subject to change and prior sale at any time without notice or obligation. Pictures, photographs, features, colors and sizes are approximate for illustration purposes only and will vary from the homes as built. <sup>^</sup>Square footage dimensions are approximate. \*A D.R. Horton Smart Home is equipped with technology that includes the following: a Z-Wave programmable thermostat manufactured by Honeywell; a Z-Wave door lock manufactured by Kwikset; a Z-Wave wireless switch manufactured by Eaton Corporation; a Qolsys, Inc. touchscreen Smart Home control device; an automation platform from Alarm.com; a SkyBell video doorbell; an Amazon Echo Dot. D.R. Horton reserves the right, without prior notice, to substitute other products for those listed above. Other Smart Home technology features may be offered for an additional charge. For Smart Home technology included in the home to work, homeowners must obtain and pay for their own Internet service and may need to purchase compatible devices and to maintain accounts with third parties for the services. D.R. Horton makes no representation or warranty that any or all of the Smart Home technology is secure, will meet any homeowner needs or will provide any level of physical or cyber security for the home – even if the technology is working as intended. All photos and drawings are for illustration purposes only. See a D.R. Horton sales agent for complete information. D.R. Horton is a registered trademark of D.R. Horton Management Company, Ltd. All other trademarks shown are the property of their respective owners. Amazon, Echo, Alexa, and all related logos are trademarks of Amazon.com, Inc. or its affiliates.

**1,672 SQ. FT. | 2 BED 2 BATH 1 STORY 2 CAR**



**Elevation A2**



**Elevation A3**



**Elevation B2**



**Elevation B5**

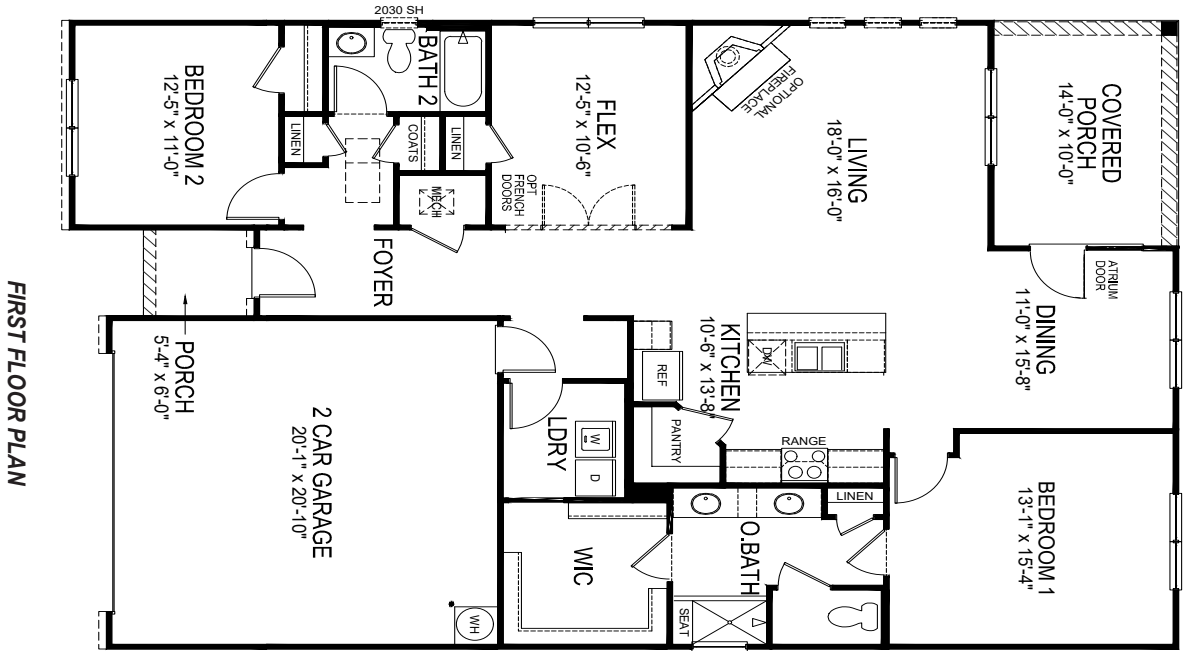


**Elevation C2**

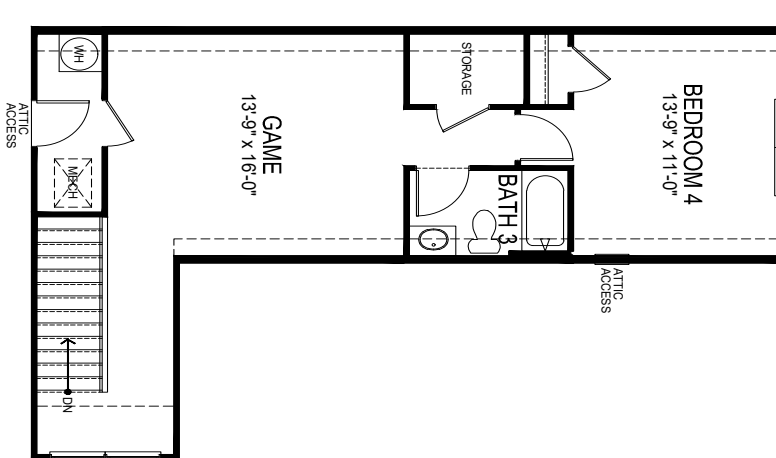


**Elevation C3**

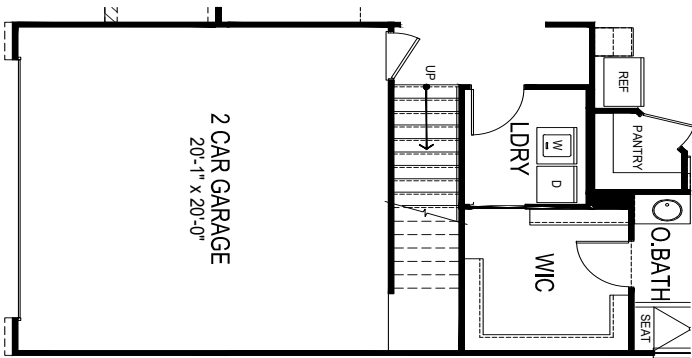
D.R. Horton is an Equal Housing Opportunity Builder. Home and community information, including pricing, included features, terms, availability and amenities, are subject to change and prior sale at any time without notice or obligation. Pictures, photographs, colors, features, and sizes are for illustration purposes only and will vary from the homes as built. Square footage dimensions are approximate. Buyer should conduct his or her own investigation of the present and future availability of school districts and school assignments. D.R. Horton has no control or responsibility for any changes to school districts or school assignments should they occur in the future. REV 3.3.2020



**FIRST FLOOR PLAN**

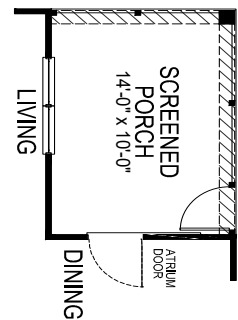


**OPT BED 4 / BATH 3 & GAME ROOM**



**STAIRS AND OPT 2ND FLOOR**

Optional 2nd Floor may change exterior elevation. See sales representative for details.



**OPT SCREENED PORCH**

1,796 SQ. FT. | 2 BED 2 BATH 1 STORY 2 CAR



Elevation A2



Elevation A3



Elevation B3



Elevation B4

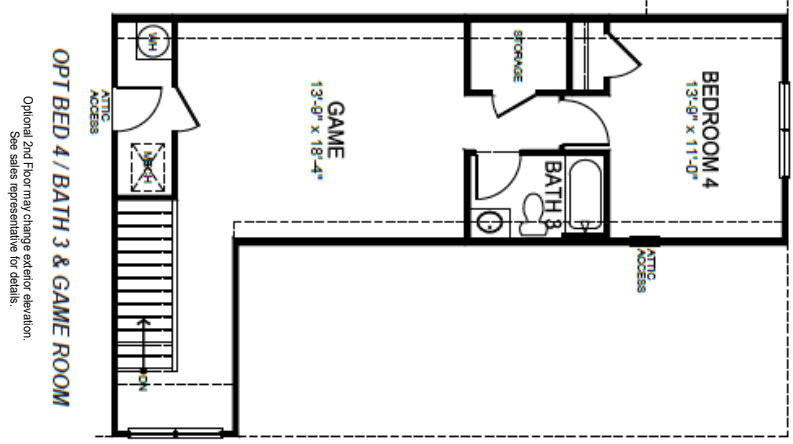
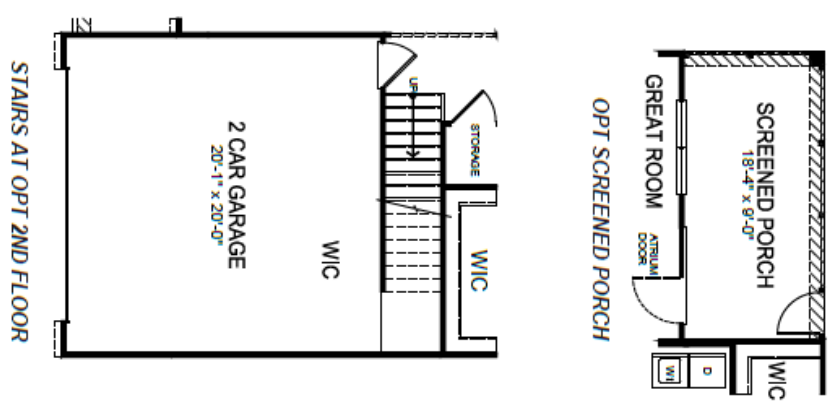
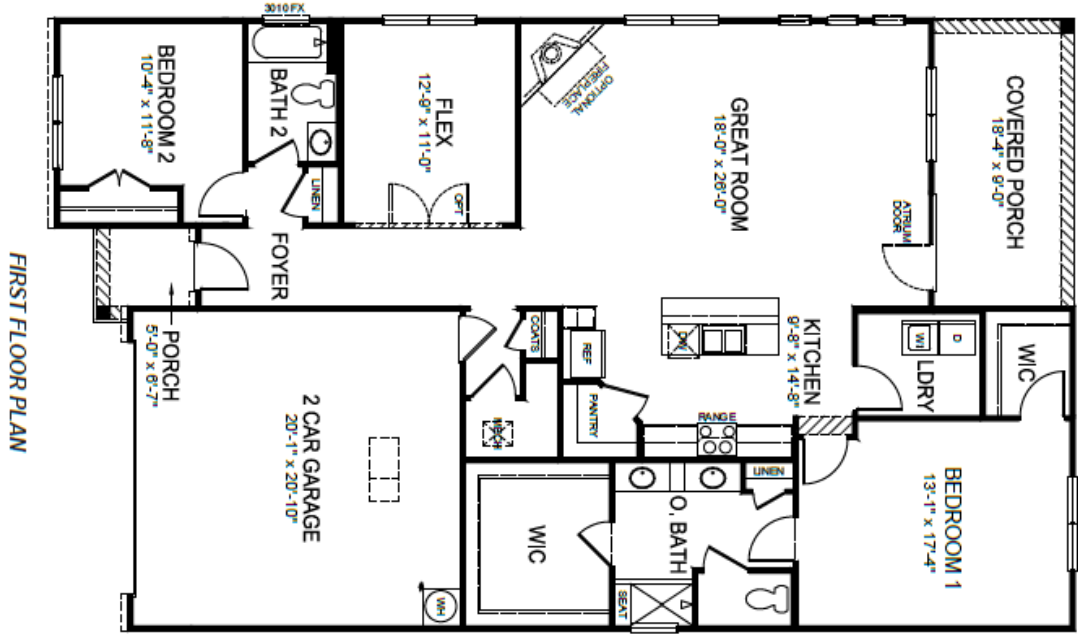


Elevation C2



Elevation C3

D.R. Horton is an Equal Housing Opportunity Builder. Home and community information, including pricing, included features, terms, availability and amenities, are subject to change and prior sale at any time without notice or obligation. Pictures, photographs, colors, features, and sizes are for illustration purposes only and will vary from the homes as built. Square footage dimensions are approximate. Buyer should conduct his or her own investigation of the present and future availability of school districts and school assignments. D.R. Horton has no control or responsibility for any changes to school districts or school assignments should they occur in the future. REV 3.3.2020



Optional 2nd Floor may change exterior elevation.  
See sales representative for details.

1,883 SQ. FT. | 3 BED 2 BATH 1 STORY 2 CAR



Elevation A2



Elevation A3



Elevation B2



Elevation B5

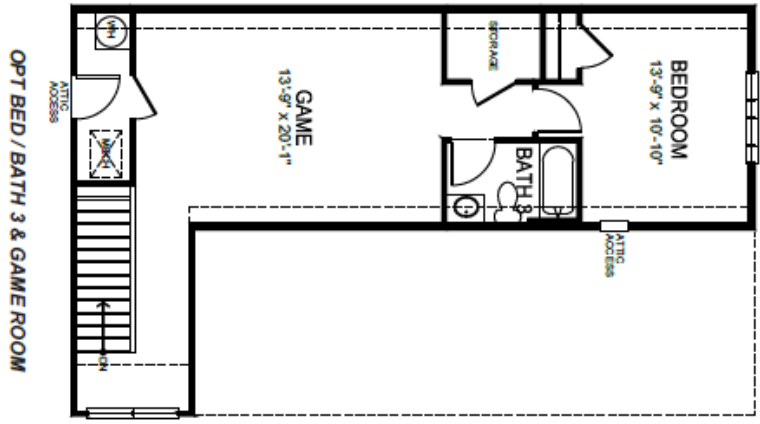
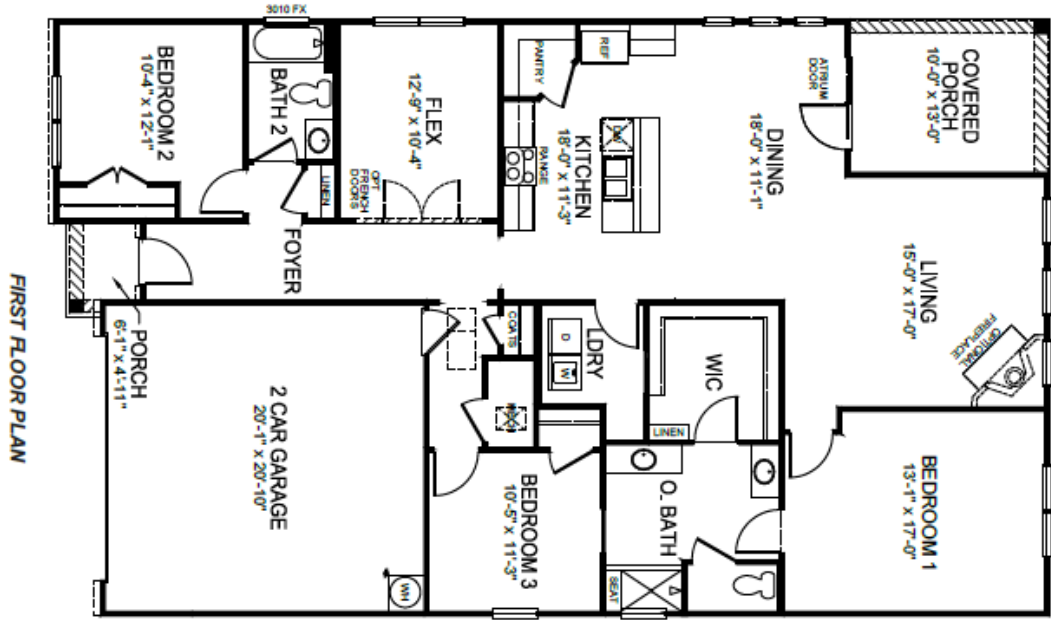


Elevation C2

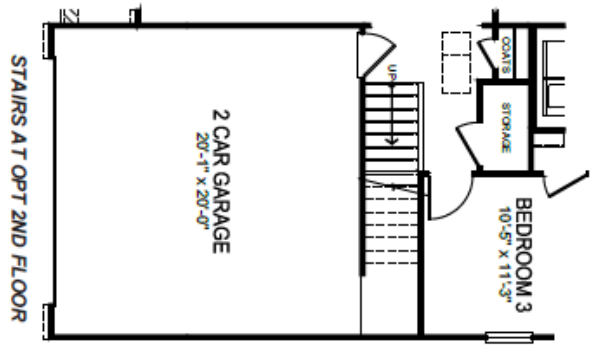


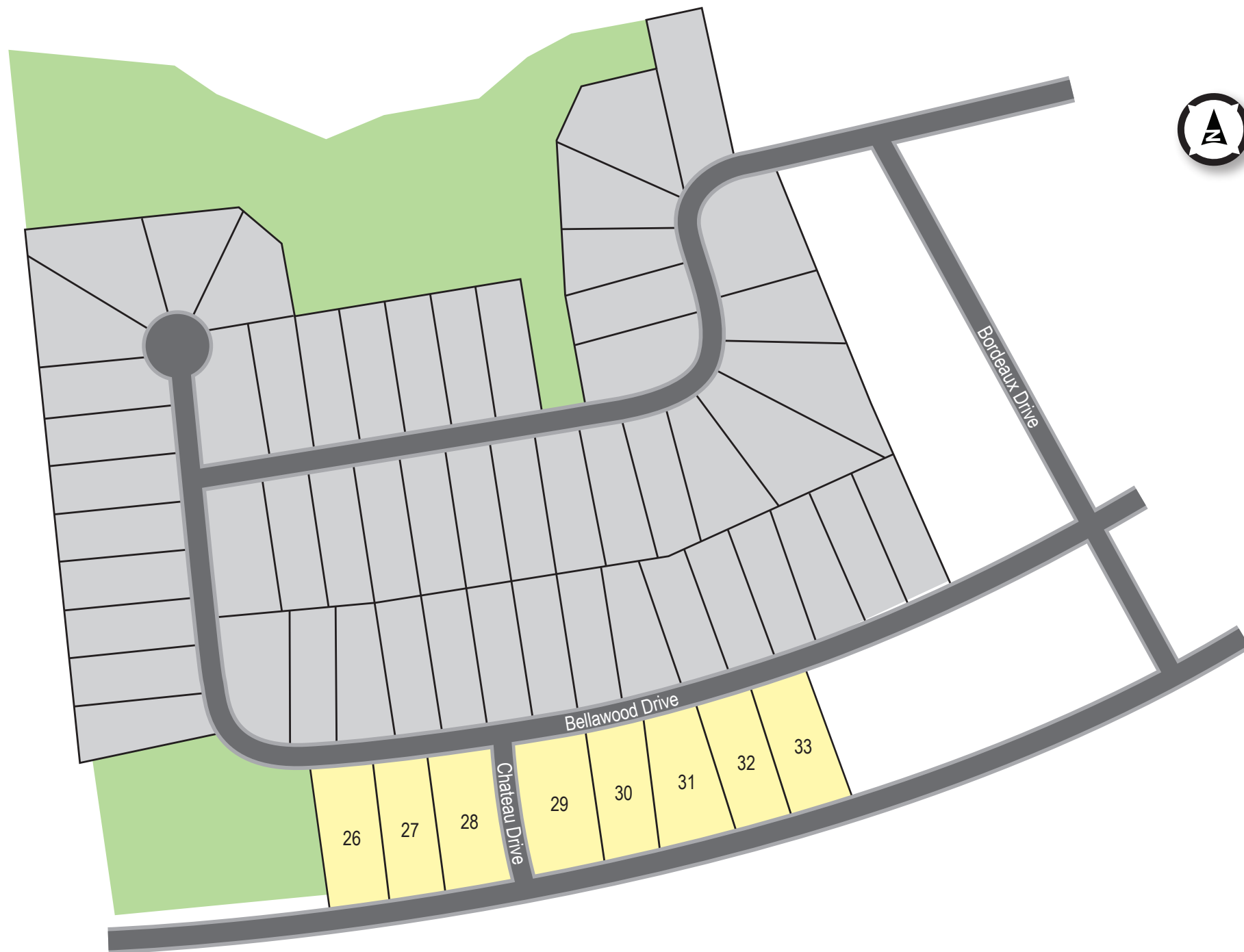
Elevation C3

D.R. Horton is an Equal Housing Opportunity Builder. Home and community information, including pricing, included features, terms, availability and amenities, are subject to change and prior sale at any time without notice or obligation. Pictures, photographs, colors, features, and sizes are for illustration purposes only and will vary from the homes as built. Square footage dimensions are approximate. Buyer should conduct his or her own investigation of the present and future availability of school districts and school assignments. D.R. Horton has no control or responsibility for any changes to school districts or school assignments should they occur in the future. REV 3.3.2020



Optional 2nd Floor may change exterior elevation.  
See sales representative for details.





Drawing is an artist's rendering and therefore is approximate, for illustration purposes only and is not to scale. It is not intended to represent current or future conditions, improvements, amenities or other features of this community. Reference should be made to recorded plats, maps and governmental approvals, any or all of which may be modified in the future. D.R. Horton makes no representation concerning current or future use of the adjacent properties or the completion of future phases of this community including features, amenities and facilities. All information is subject to change without notice or obligation. 4/28/21





# WELCOME TO AMERICA'S SMART HOME®

*Home is*  
CONNECTED

## **YOU'LL NEVER BE TOO FAR FROM HOME**

Monitor and control your home from your couch or from 500 miles away. Connect to your home with your smartphone, tablet or computer.

## **HOMELIFE CAN BE HANDS-FREE**

It's never been easier to settle into a new routine. Set the scene with your voice, from your phone, through the Qolsys panel – or schedule it and forget it. Your home will always be ready for you.

## **NO MORE BOXES OF USELESS TECH**

We wanted to make sure you have the right system that can grow with you. Our homes speak to Bluetooth, Wi-Fi, Z-Wave and cellular devices, allowing you to sync with almost any smart device.

Visit [drhorton.com/smart-home](http://drhorton.com/smart-home) to see what's behind the door of your new smart home.

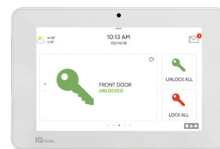
D.R. Horton is an Equal Housing Opportunity Builder. A D.R. Horton Smart Home is equipped with technology that includes the following: a Z-Wave programmable thermostat manufactured by Honeywell; a Z-Wave door lock manufactured by Kwikset; a Smart Switch; a Qolsys, Inc. touchscreen Smart Home control device; an automation platform from Alarm.com; a SkyBell video doorbell; an Amazon Echo Dot. D.R. Horton reserves the right, without prior notice, to substitute other products for those listed above. Other Smart Home technology features may be offered for an additional charge. For Smart Home technology included in the home to work, homeowners must obtain and pay for their own Internet service and may need to purchase compatible devices and to maintain accounts with third parties for the services. D.R. Horton makes no representation or warranty that any or all of the Smart Home technology is secure, will meet any homeowner needs or will provide any level of physical or cyber security for the home – even if the technology is working as intended. All photos and drawings are for illustration purposes only. See a D.R. Horton sales agent for complete information. D.R. Horton is a registered trademark of D.R. Horton Management Company, Ltd. All other trademarks shown are the property of their respective owners. Amazon, Echo, Alexa, and all related logos are trademarks of Amazon.com, Inc. or its affiliates.

# THE TECHNOLOGY BEHIND AMERICA'S SMART HOME®

## INTRODUCING HOME IS CONNECTED®

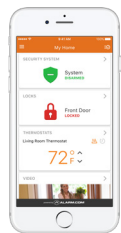
You will never be too far from home with Home Is Connected.® Your new home is built with an industry-leading suite of smart home products that keep you connected with the people and place you value most.

**Talk to a new home sales representative today.**



### Qolsys IQ Panel

The Qolsys panel is the central hub that talks to all the devices of your smart home. This award-winning panel bridges the entire suite of products with Bluetooth capability, Wi-Fi integration, Z-Wave access, and cellular connectivity.



### Alarm.com App

Alarm.com is the heartbeat of the entire smart home system. This simple, one app solution brings the Home Is Connected® system together, so no matter where you are, your home is at your fingertips.



### Amazon Echo Dot

Control your home with your voice and experience hands-free convenience with the Amazon Echo Dot. Just ask Alexa to play music, change your home's temperature, read the news, share the weather, and more.



### SkyBell

Greet your guests from your smart phone with Skybell, the smart video doorbell that allows you to see, hear and talk to whoever comes to your door.



### Kwikset SmartCode888

Control your door even if you're not home. Lock and unlock your front door by entering your key code, or from your smart device.



### Honeywell T6 Pro Z-Wave Thermostat

Set the perfect temperature before you get home. The Honeywell thermostat lets you cool or heat your home using your smartphone, Qolsys panel, voice, or the thermostat itself.



### Smart Switch

Bring your home to life in the evenings. If you're on the go or on the couch, the Smart Switch can be turned on with your voice or smartphone.