

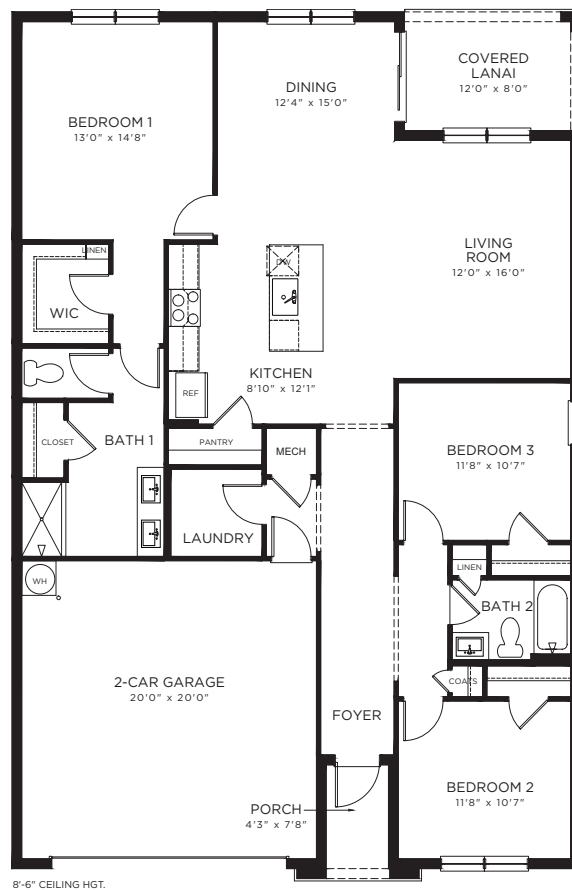
NEW SINGLE-FAMILY HOMES



Walden Square • 21427 NW 14th Ave, Miami Gardens, FL 33169 • (877) 949-3070

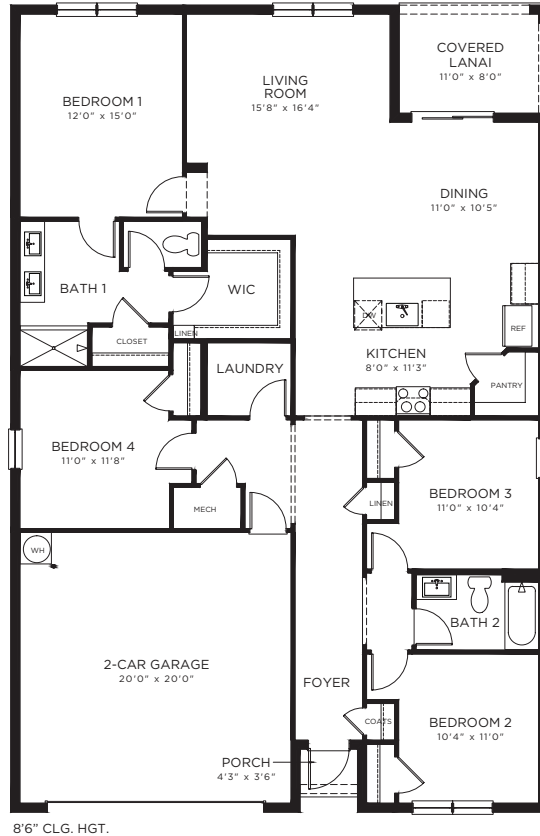
D.R. Horton is equal housing opportunity builder. Home and community information, including pricing, included features, terms, availability and amenities, are subject to change and prior sale at any time without notice or obligation. Pictures, photographs, features, colors and sizes are approximate for illustration purposes only and will vary from the homes as built. Florida Certified General Contractor #CGC059394

ARIA
3 Bed, 2 Bath, 2-Car Garage



Total A/C Sq. Ft.	1,672
Porch	36
Covered Lanai	96
2-Car Garage	432
Total Sq. Ft.	2,236

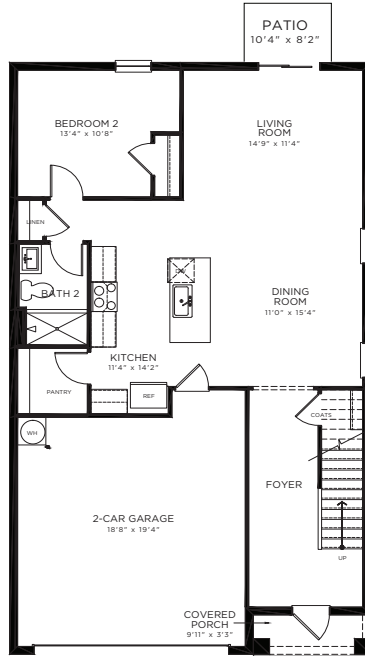
Cali
4 Bed, 2 Bath, 2-Car Garage



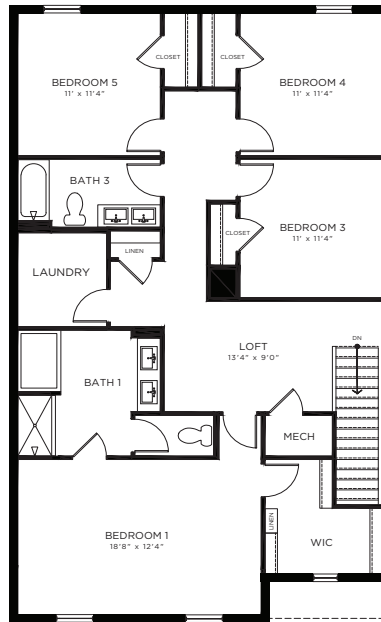
8'6" CLG. HGT.

Total A/C Sq. Ft.	1,828
Porch	16
Covered Lanai	88
2-Car Garage	430
Total Sq. Ft.	2,362

ROBIE
5 Bed, Loft, 3 Bath, 2-Car Garage



FIRST FLOOR
 8'-0" CEILING HGT.

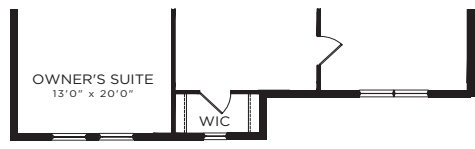
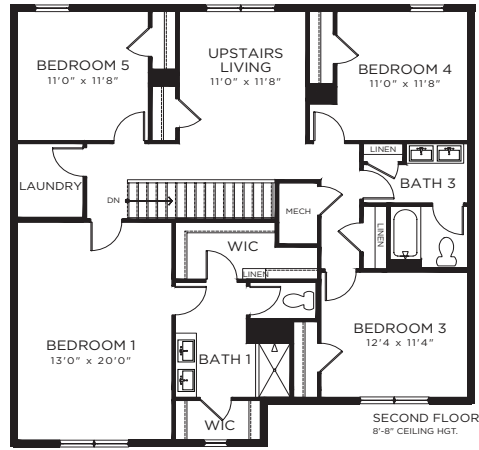
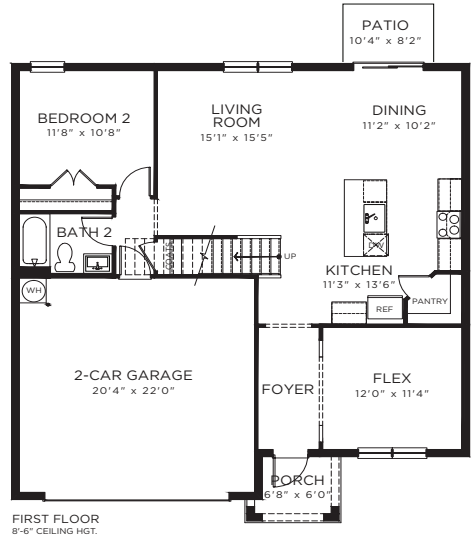


SECOND FLOOR
 8'-8" CEILING HGT.

1st Floor A/C Sq. Ft.....	1048
2nd Floor A/C Sq. Ft.....	1451
Total A/C Sq. Ft.....	2,499
Covered Porch.....	32
2-Car Garage.....	403
Total Sq. Ft.....	2,934

HAYDEN

5 Bed, 3 Bath, Flex, 2-Car Garage

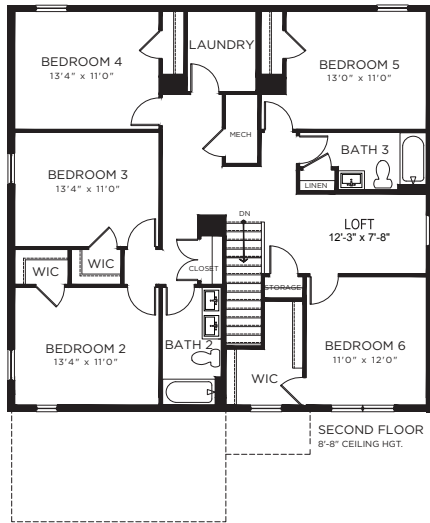
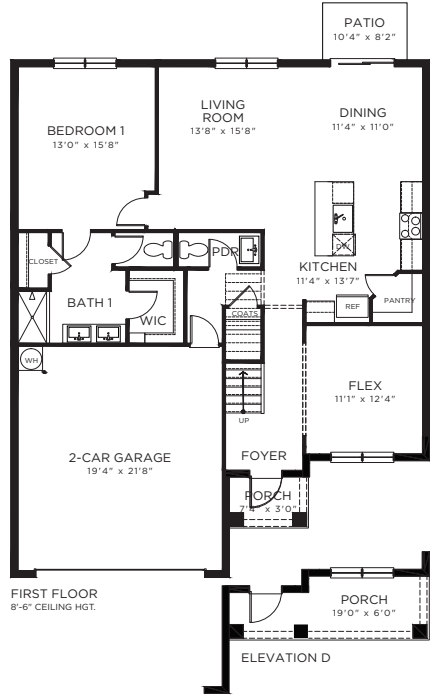


ELEVATION D

1st Floor A/C Sq. Ft.	1104
2nd Floor A/C Sq. Ft.	1541
Total A/C Sq. Ft.	2,645
Covered Porch (Elev. C)	53
Covered Porch (Elev. D)	115
2-Car Garage	437
Total Sq. Ft (Elev. C)	3,127
Total Sq. Ft (Elev. D)	3,197

D.R. Horton is equal housing opportunity builder. Pictures, photographs, features, colors, drawings, floor plans, square footages and sizes are approximate for illustration purposes only and will vary from the homes as built. All drawings are the artist's concept. Florida Certified General Contractor #CCG059394

ELLE
6 Bed, 3.5 Bath, Flex, Loft, 2-Car Garage



1st Floor A/C Sq. Ft.....	1330
2nd Floor A/C Sq. Ft.....	1534
Total A/C Sq. Ft.....	2,864
Covered Porch (Elev. C)	31
Covered Porch (Elev. D)	99
2-Car Garage	453
Total Sq. Ft.(Elev C).....	3,348
Total Sq. Ft.(Elev D).....	3,416

D.R. Horton is equal housing opportunity builder. Pictures, photographs, features, colors, drawings, floor plans, square footages and sizes are approximate for illustration purposes only and will vary from the homes as built. All drawings are the artist's concept. Florida Certified General Contractor #CGC059394

Walden Square | Included Features

Architectural Artistry

- Reinforced concrete monolithic foundation slab
- Masonry exterior walls
- IKO dimensional roof shingles with 30 year manufacturer's warranty
- Professionally engineered roof and floor trusses with hurricane clips and bracing
- Architecturally designed exterior elevations with each floor plan
- Fully sodded homesites with professionally designed landscaping
- Hunter® automatic irrigation system
- Paver driveway, entry walkway, and patio
- Durable metal garage door
- Therma Tru® embossed insulated fiberglass 8' front door
- Hurricane storm panels
- Exterior weather proof outlets (G.F.I.)
- Exterior hose bib connection

Heart of the Home

- Knockdown textured finish on walls and ceilings
- Jeld-Wen® 2-panel interior doors
- Kwikset® satin nickel keyed entry handleset
- Kwikset® satin nickel interior door levers throughout
- Vinyl-coated ventilated shelving in all closets
- Daltile® 18" x 18" ceramic tile flooring in all first floor living areas
- Mohawk® luxurious wall-to-wall carpeting (installed over dense padding)
- Sherwin Williams® bright white interior paint
- Square style baseboards throughout

A Gourmet's Delight

- Amana by Whirlpool® Black Appliances:
 - 25 Cu. Ft. side x side refrigerator with ice maker
 - Glass top range with microwave above
 - Built-in dishwasher
- Moen® single lever faucet
- Sterling single bowl stainless steel sink in kitchen
- Quality crafted custom designed cabinets with 30" uppers

Thoughtful Details

- Uponor PEX® plumbing water lines
- Minimum 50 gallon insulated water heater (per plan)
- Interior washer/dryer hook-up
- R-30 blown insulation above all air-conditioned living space
- R-11 BATT insulation between interior wall and garage wall
- R-4.1 insulated exterior masonry walls
- Carrier® energy efficient central A/C and heating system

Bathroom Conveniences

- Daltile® 12" x 12" ceramic tile floors in all baths
- Full vanity mirrors in all baths
- Gerber® Elongated commodes throughout
- Gerber® Pedestal sink in powder room (per plan)
- Moen® bathroom faucets throughout
- Air King® exhaust fans in all bathrooms

Technology Standard Features

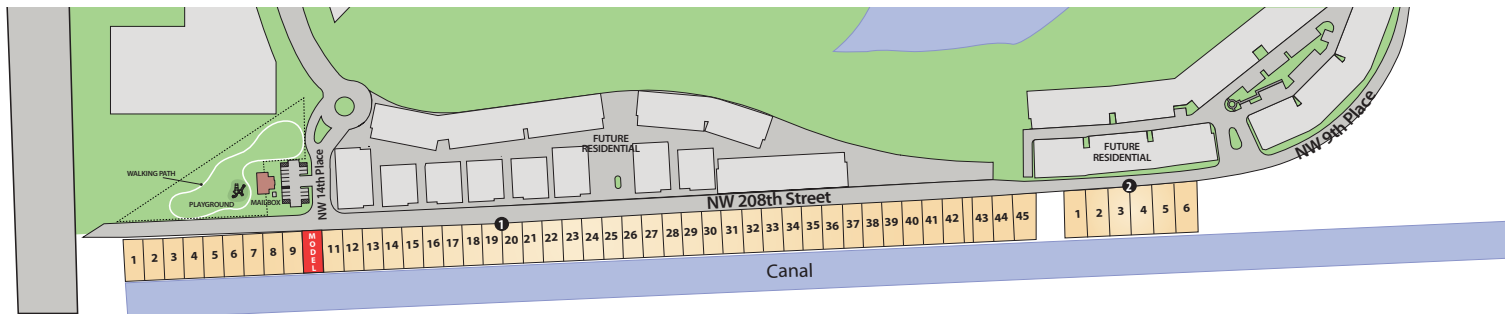
- Square D® surge protection on all major appliances
- Pre-wired for ceiling fans with switches in all bedrooms and great room
- High speed structured wiring for 4-line phone, video and computer Includes CAT-5 data lines and RG-6 quad shield coaxial cable (per plan)
- BRK® electrical smoke detectors with battery back-up
- BRK® carbon monoxide detector
- Cooper® switches and outlets throughout
- Minimum 150-amp electrical panel with circuit breakers

Home Is® Connected

- Qolysys IQ Panel II - 7" HD Touchscreen with built-in SMP camera
- Skybell® Trim Plus WiFi video doorbell
- Echo Dot™ speaker with Alexa
- Z Wave™ Thermostat
- Z Wave™ Light Switch
- Z Wave™ Door Lock
- WiFi enabled garage door opener with two transmitters
- Security System with 1 motion detector and 3 door contacts

D.R. Horton's Personal Touch

- Personalized New Homeowner Orientation
- D.R. Horton 1-Year Warranty
- 10-Year RWCTM warranty to protect your investment
- 10-Year Carrier® limited warranty
- 3rd party home inspections



D.R. Horton is equal housing opportunity builder. Included features subject to change without prior notice or obligation, as a result, please consult with one of our sales representatives for the latest community information. This map is a schematic for exhibition purposes only and does not represent the exact location or configuration of site features, lot lines, easements, amenities, units, buildings or details shown thereon. All homesite sizes are approximate and may vary. All information on this map, including availability and delivery dates is subject to change without notice or obligation. Florida Certified General Contractor #CGC059394