

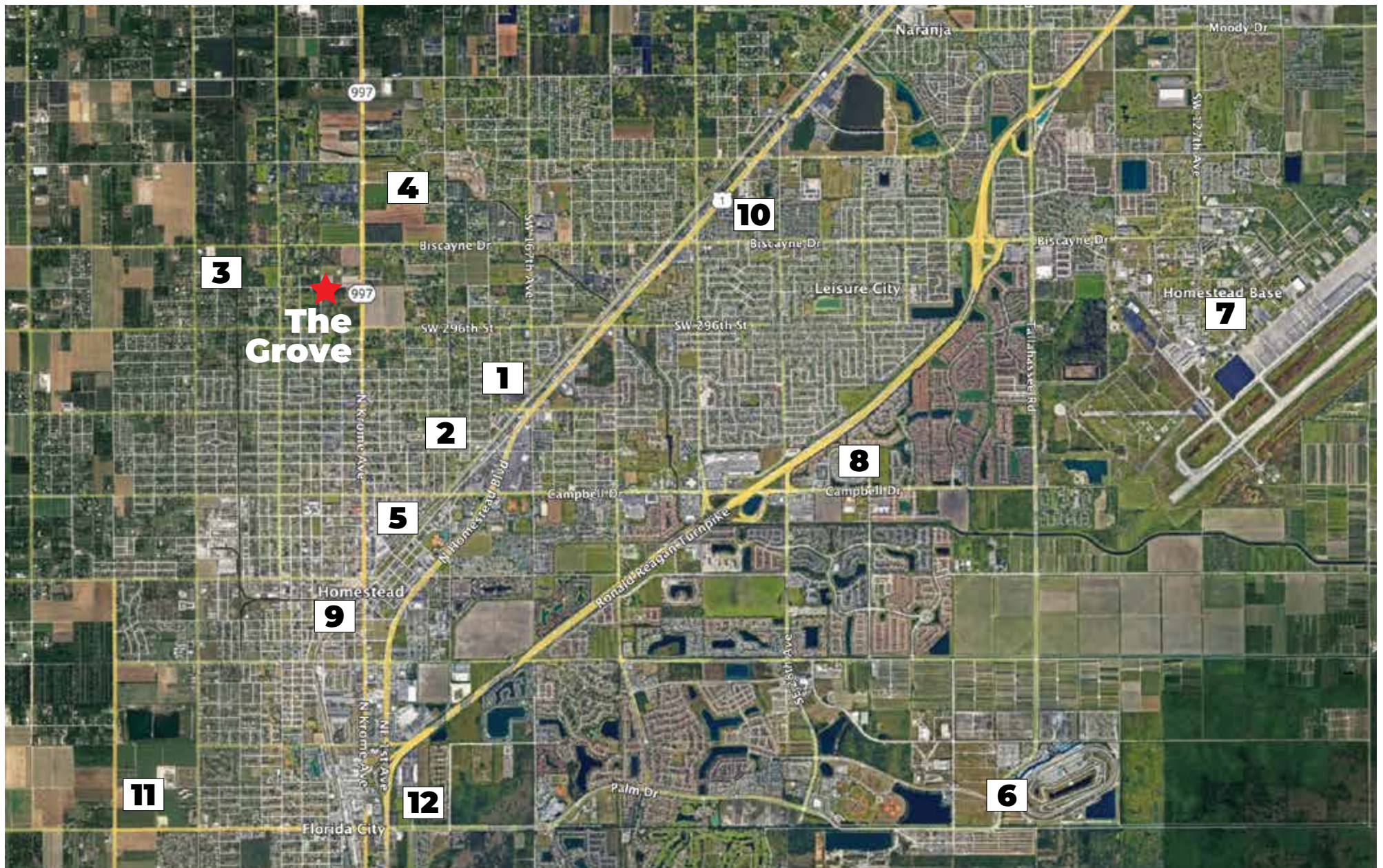


**D·R·HORTON**<sup>®</sup>  
*America's Builder*

The **G**rove

SINGLE-FAMILY HOMES  
Homestead

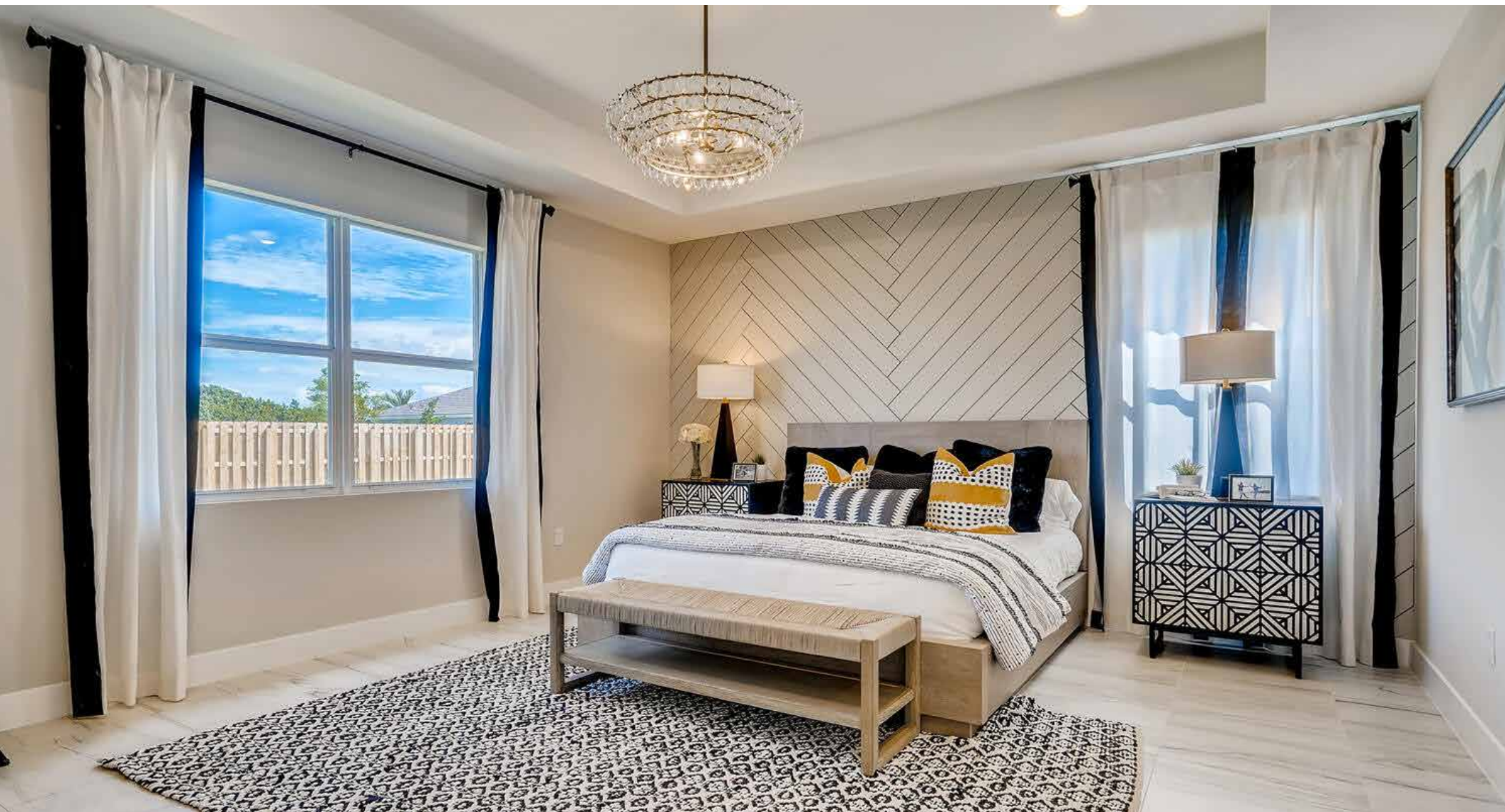




## NEIGHBORHOOD Map

1. Avocado Elementary School
2. Somerset Oaks Academy
3. South Dade Middle School
4. South Dade Senior High School 9-12
5. Miami-Dade College
6. Homestead Miami Speedway
7. Homestead Air Reserve Base
8. Homestead Hospital
9. Homestead Station Shopping Mall
10. Coral Castle
11. Post Office
12. Florida Keys Outlet Marketplace





**D·R·HORTON**<sup>®</sup>  
*America's Builder*

The **G**rove

INCLUDED  
Features

### **Architectural Artistry**

- Reinforced concrete monolithic foundation slab
- Masonry exterior walls
- Professionally engineered roof with hurricane clips and bracing
- Baked in color through cement flat roof tiles
- Architecturally designed exterior elevations with each floor plan
- Fully sodded homesites with professionally designed landscaping
- Gutters in front area of driveway, entry walkway
- Hunter® automatic irrigation system
- Paver driveway, entry walkway, and lanai
- Durable metal garage door
- Therma Tru® embossed insulated fiberglass front door
- Impact resistant glass windows and sliding glass doors
- Exterior weather proof outlets (G.F.I.)
- Exterior hose bib connection

### **Heart of the Home**

- Knockdown textured finish on walls and ceilings
- Jeld-Wen® 2-panel interior doors
- Maxim® light fixtures
- Kwikset® keyed entry handleset
- Kwikset® interior door levers throughout
- Vinyl-coated ventilated shelving in all closets
- Daltile® 20" x 20" tile flooring throughout
- Mohawk® luxurious wall-to-wall carpeting (installed over dense padding)
- Sherwin Williams® bright white interior paint
- Square style baseboards throughout

### **A Gourmet's Delight**

- Whirlpool® stainless steel appliances:
  - 25 Cu. Ft. side x side refrigerator with ice maker
  - Glass top range with microwave above
  - Built-in dishwasher
- Moen® single lever pull down faucet
- Moen® garbage disposal
- Sterling single bowl stainless steel undermount sink
- Kitchen island waterfall
- Quality crafted custom designed cabinets, 36" uppers with small crown molding and hardware
- Granite countertops with built up edge and tile backsplash

### **Thoughtful Details**

- Uponor PEX® plumbing water lines
- Minimum 50 gallon insulated water heater (per plan)
- Interior washer/dryer hook-up
- R-30 blown insulation above all air-conditioned living space
- R-13 BATT insulation between interior wall and garage wall
- R-4.1 insulated exterior masonry walls
- Energy efficient central A/C and heating system

### **Bathroom Conveniences**

- Adult-height custom designed cabinets with cultured marble tops
- Daltile® 12" x 12" tile floors & shower walls
- Full vanity mirrors
- Frameless shower doors in all baths
- Sterling® soaking tub in bedroom one (per plan)
- Elongated commodes throughout
- Pedestal sink in powder room (per plan)
- Moen® bathroom faucets throughout
- Air King® exhaust fans

### **Technology Standard Features**

- Square D® surge protection on all major appliances
- Pre-wired for ceiling fans with switches in all bedrooms and great room
- High speed structured wiring for 4-line phone, video and computer Includes CAT-5 data lines and RG-6 quad shield coaxial cable (per plan)
- BRK® electrical smoke detectors with battery back-up
- BRK® carbon monoxide detector
- Deako® switches and Cooper® outlets throughout
- Minimum 150-amp electrical panel with circuit breakers

### **Home Is® Connected**

- Qolysys IQ Panel II 7" HD Touchscreen with built-in 5MP camera
- Skybell® Trim Plus WiFi video doorbell
- Echo Dot™ speaker with Alexa
- Z Wave™ Thermostat
- Z Wave™ Light Switch
- Z Wave™ Door Lock
- WiFi enabled garage door opener with three transmitters
- Security System w/ 1 motion detector and 3 door contacts

### **D.R. Horton's Personal Touch**

- Personalized New Homeowner Orientation
- D.R. Horton 1-Year Warranty
- 10-Year RWC™ warranty to protect your investment
- 10-Year Carrier® limited warranty
- 3rd party home inspections





**D·R·HORTON**<sup>®</sup>  
*America's Builder*

The **G**rove

FLOORPLANS



Classic



Coastal

DESTIN

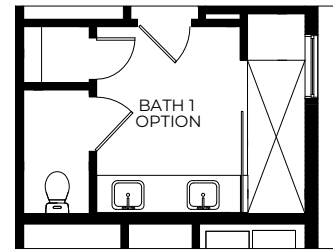
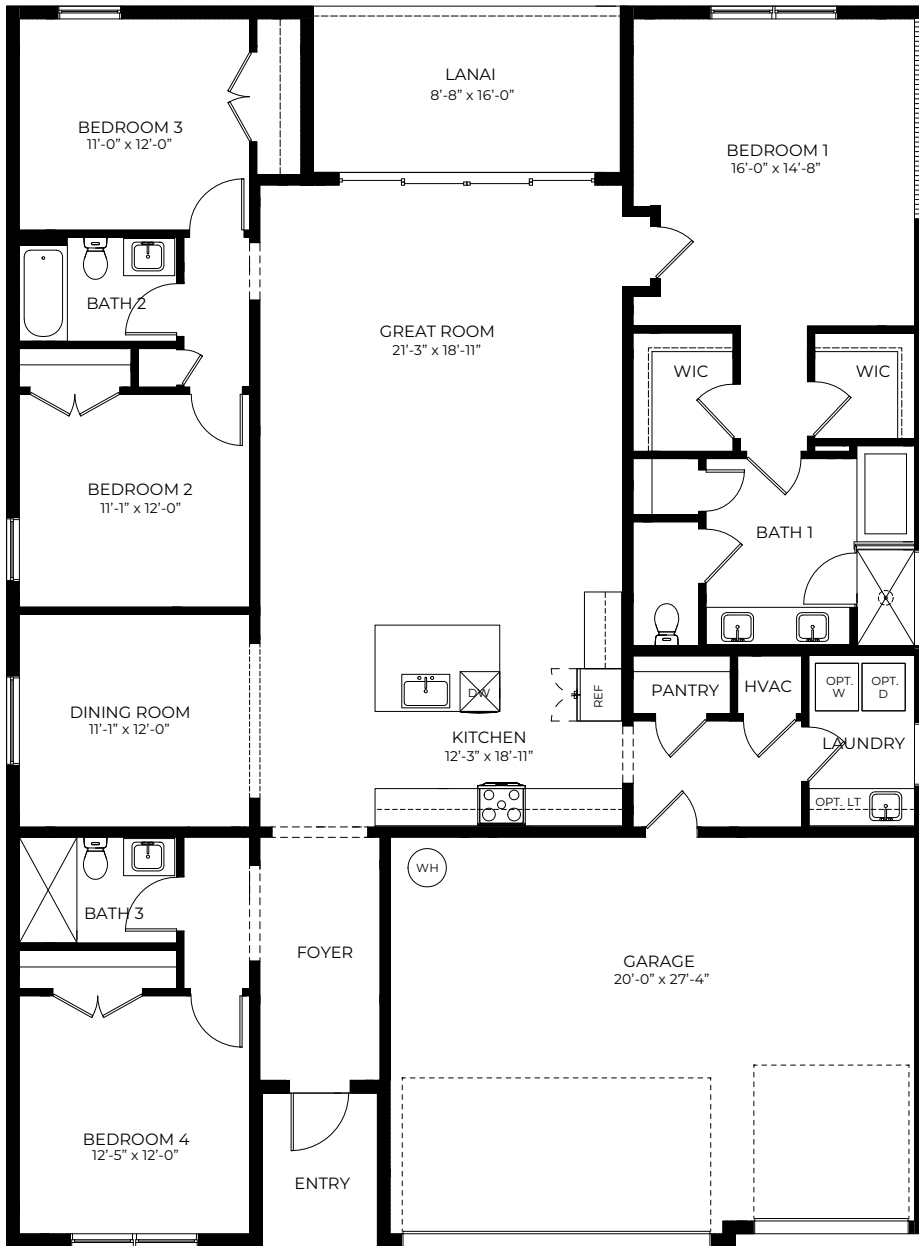


Contemporary



Modern





# DESTIN

4 Bedrooms  
3 Bathrooms  
3-Car Garage

Total A/C Sq. Ft.....	<b>2,315</b>
Entry.....	29
Lanai.....	150
3-Car Garage.....	594
<b>Total Sq. Ft.....</b>	<b>3,088</b>





Classic



Coastal

FRASER

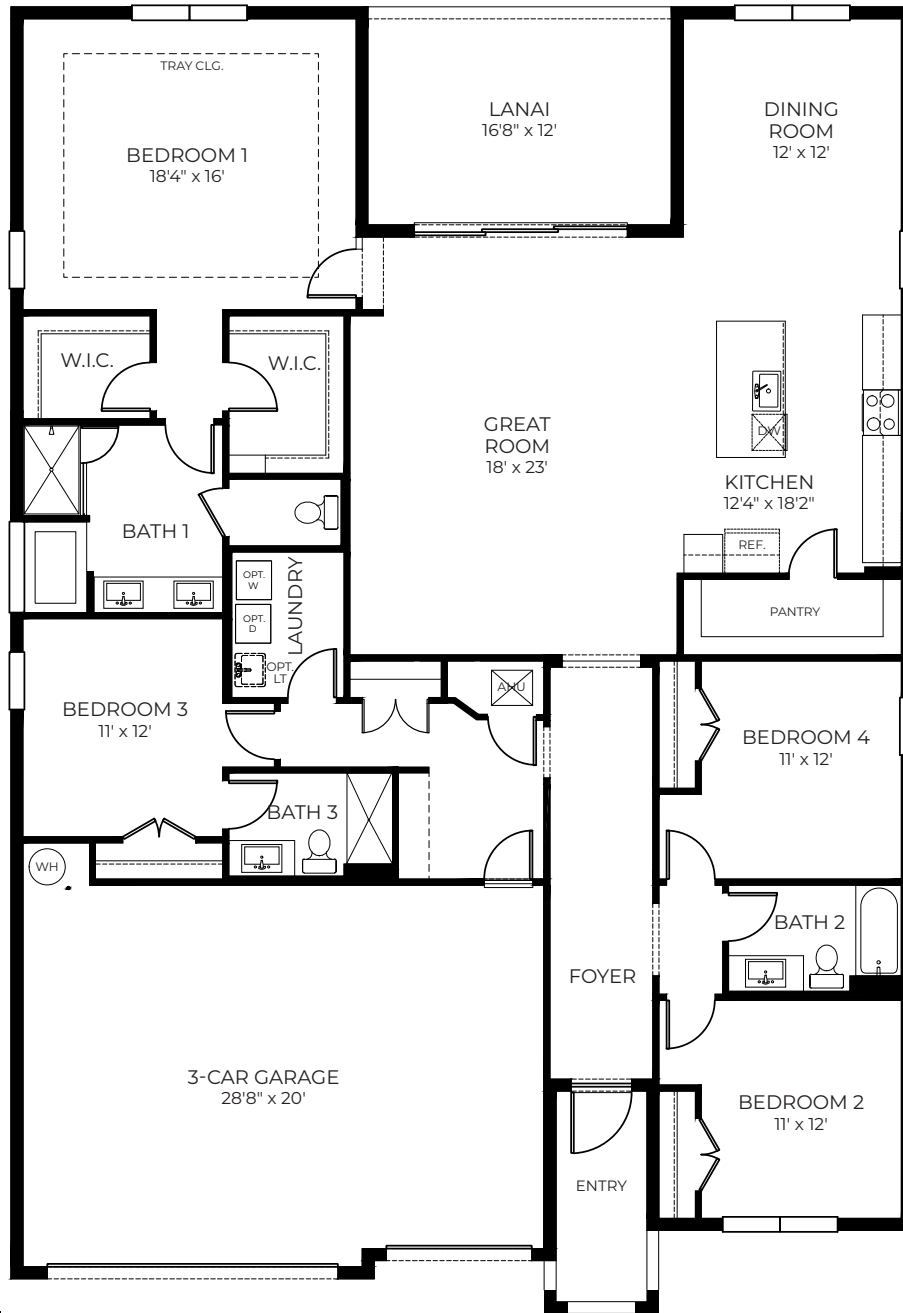
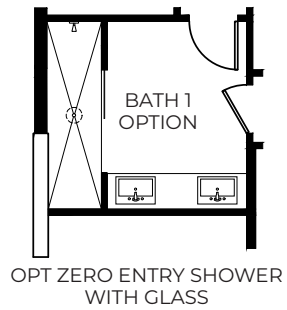


Contemporary



Modern





# FRASER

4 Bedrooms  
3 Bathrooms  
3-Car Garage

Total A/C Sq. Ft.	2,533
Entry	60
Lanai	200
3-Car Garage	643
<b>Total Sq. Ft.</b>	<b>3,436</b>





Classic



Coastal

CAMDEN

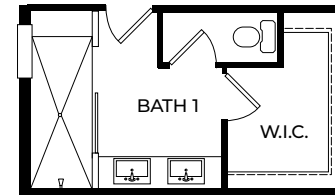
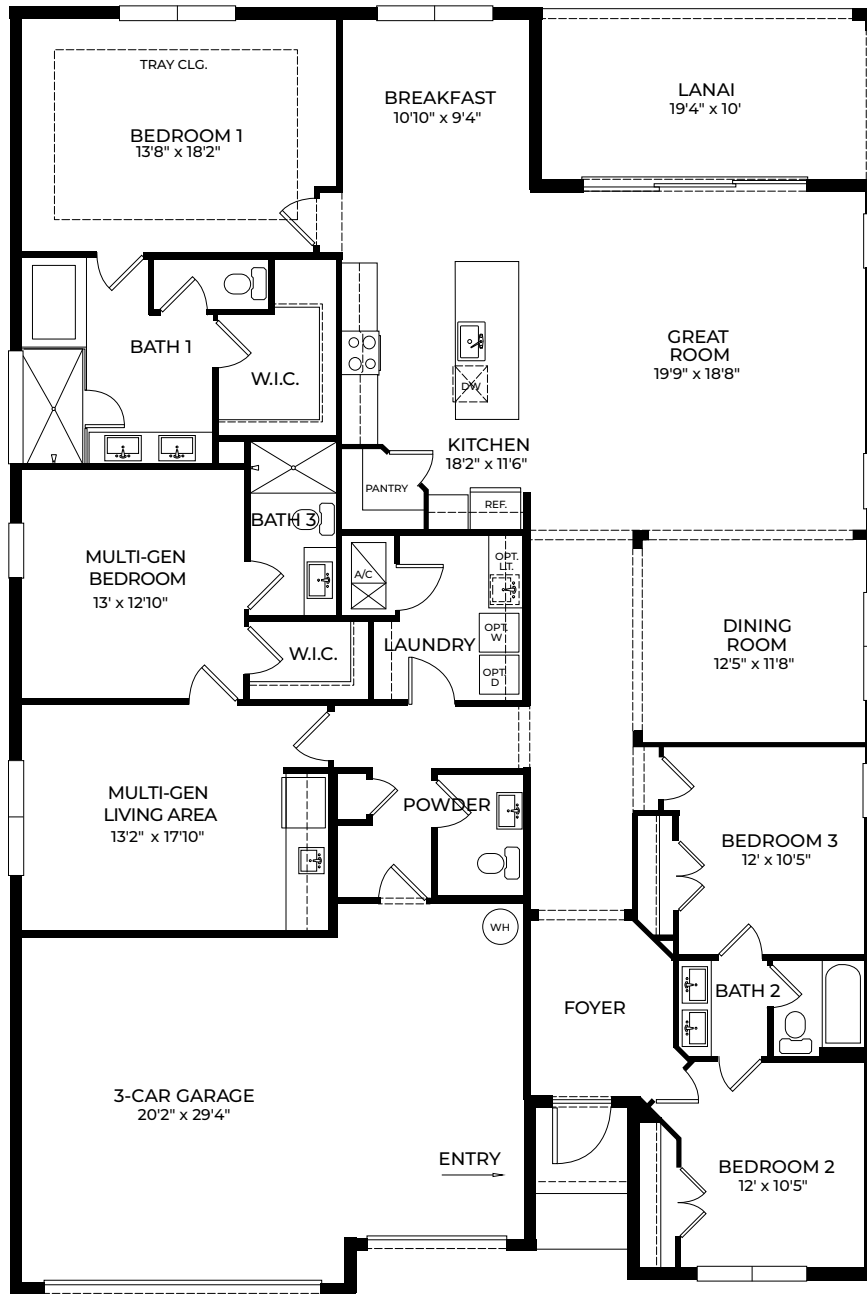


Contemporary



Modern





OPTIONAL BATH 1



# CAMDEN

4 Bedrooms  
3.5 Bathrooms  
3-Car Garage

Total A/C Sq. Ft.....	2,837
Entry.....	27
Lanai.....	193
3-Car Garage.....	619
<b>Total Sq. Ft.....</b>	<b>3,676</b>





Classic



Coastal

BELLISTER

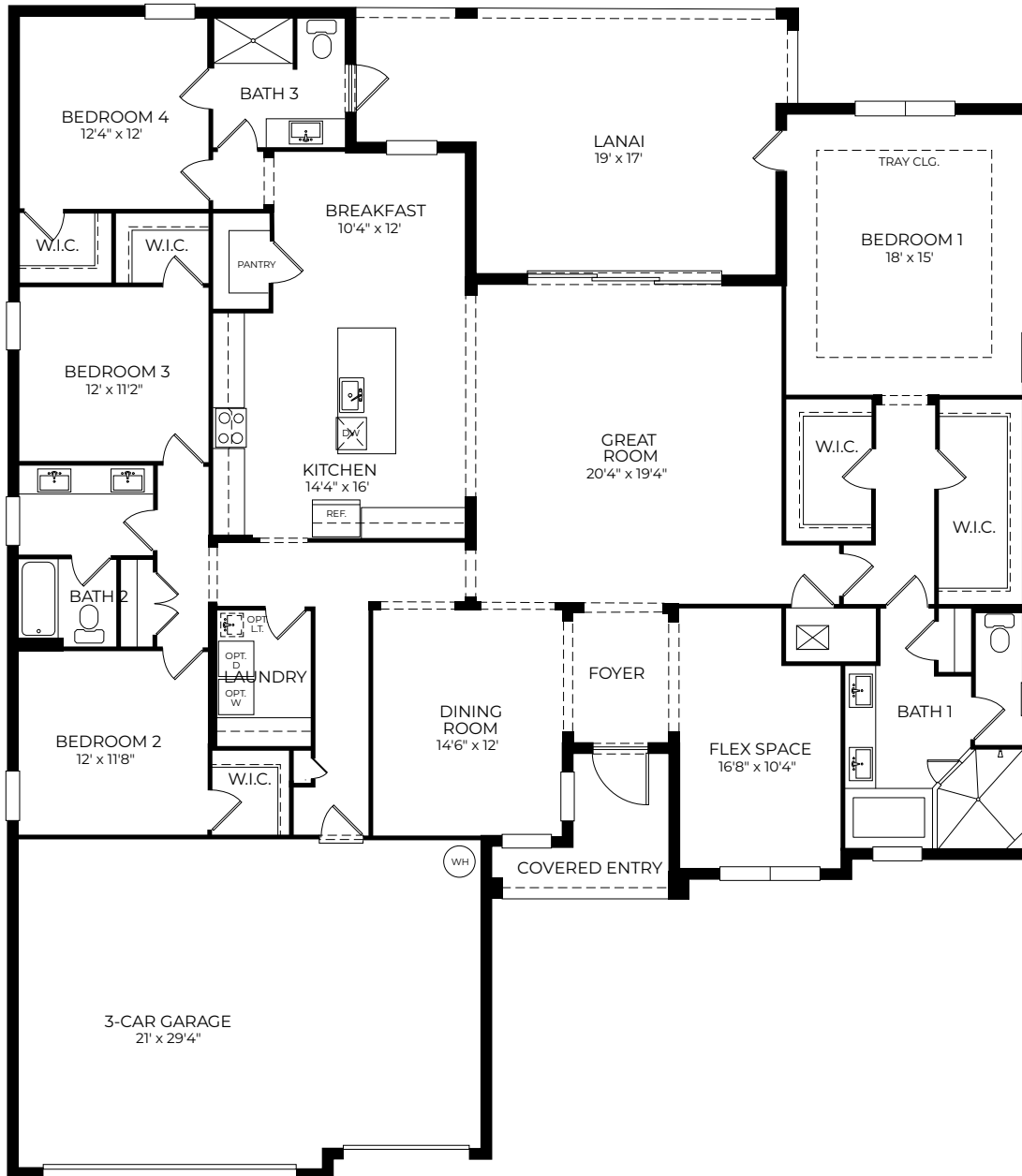


Contemporary



Modern





## BELLISTER

4 Bedrooms  
 3 Bathrooms  
 Flex Space  
 3-Car Garage

Total A/C Sq. Ft.	2,986
Covered Entry	75
Lanai	397
3-Car Garage	651
<b>Total Sq. Ft.</b>	<b>4,109</b>

**D·R·HORTON®**  
*America's Builder*

The **G**rove

# COMMUNITY Siteplan



**D·R·HORTON®**  
*America's Builder*

The **Grove**

855.647.4247 · drhorton.com  
29489 SW 179th Ave., Homestead, FL 33030

Selling from: Heritage Ranch  
16177 SW 277th Street, Homestead, FL 33030

D.R. Horton is equal housing opportunity builder. Home and community information, including pricing, included features, terms, availability and amenities, are subject to change and prior sale at any time without notice or obligation. Pictures, photographs, features, colors, drawings, floor plans, square footages and sizes are approximate for illustration purposes only and will vary from the homes as built. All drawings are the artist's concept. Buyer should conduct his or her own investigation of the present and future availability of school districts and school assignments. D.R. Horton has no control or responsibility for any changes to school districts or school assignments should they occur in the future. Home Is Connected, A smart home is a convenient home setup where appliances and devices can be automatically controlled remotely from any internet-connected place using a mobile or other networked device. Certified General Contractor License Number CGC05939