

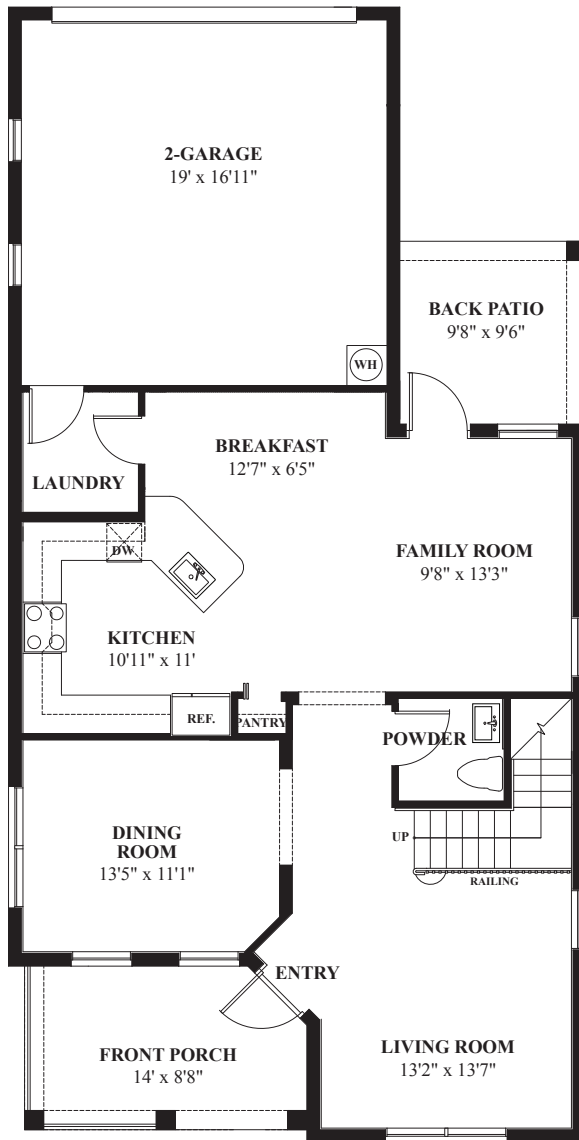


Cheley

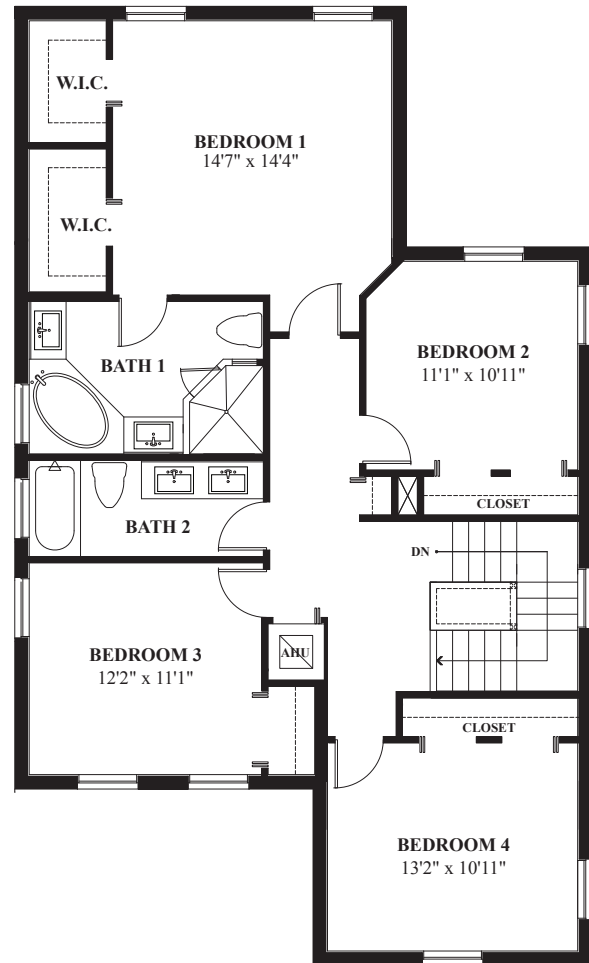
at Summerville

drhorton.com

D.R. Horton is equal housing opportunity builder. Pictures, photographs, features, colors, drawings, floor plans, square footages and sizes are approximate for illustration purposes only and will vary from the homes as built. All drawings are the artist's concept. Florida Certified General Contractor #CGC059394



FIRST FLOOR
9' CLG. HGT.



SECOND FLOOR
9'4" CLG. HGT.

4 Bedrooms, 2½ Bathrooms, 2-Car Garage

1st Floor A/C Sq. Ft.....	1023
2nd Floor A/C Sq. Ft.....	1177
Total A/C Sq. Ft.....	2,200
Front Porch.....	140
Back Patio.....	92
2-Car Garage.....	400
Total Sq. Ft.....	2,832

Summerville

Miami

Architectural Artistry

- Reinforced concrete monolithic foundation slab
- Masonry exterior walls
- Professionally engineered roof and floor trusses with hurricane clips and bracing
- Architecturally designed exterior elevations with each floor plan
- Fully sodded homesites with professionally designed landscaping
- Hunter® automatic irrigation system
- Concrete driveways, entry walkways, and patios
- Baked in color through cement roof tiles
- Fenced in back yard
- Durable metal garage door
- Therma Tru® embossed insulated fiberglass 8' front door
- Hurricane storm panels
- Exterior weather proof outlets (G.F.I.)
- Exterior hose bib connection

Heart of the Home

- Knockdown textured finish on walls and ceilings
- Jeld-Wen® 2-panel interior doors
- Kwikset® satin nickel keyed entry handleset
- Kwikset® satin nickel interior door levers throughout
- Vinyl-coated ventilated shelving in all closets
- Daltile® 18" x 18" ceramic tile flooring in all first floor living areas
- Mohawk® luxurious wall-to-wall carpeting (installed over dense padding)
- Sherwin Williams® bright white interior paint
- Square style baseboards throughout

A Gourmet's Delight

- Frigidaire® Black Appliances:
 - 25 Cu. Ft. side x side refrigerator with ice maker
 - Glass top range with microwave above
 - 24" Built-in dishwasher
- Moen® single lever faucet
- Sterling single bowl stainless steel sink in kitchen
- Quality crafted custom designed cabinets with 30" uppers

Thoughtful Details

- Uponor PEX® plumbing water lines
- Minimum 50 gallon insulated water heater (per plan)
- Interior washer/dryer hook-up
- R-30 blown insulation above all air-conditioned living space
- R-11 BATT insulation between interior wall and garage wall
- R-4.1 insulated exterior masonry walls
- Carrier® energy efficient central A/C and heating system

Bathroom Conveniences

- All baths with adult-height custom designed wood cabinets
- Daltile® 12" x 12" ceramic tile floors in all baths
- Full vanity mirrors in all baths
- Gerber® Elongated commodes throughout
- Gerber® Pedestal sink in powder room (per plan)
- Moen® bathroom faucets throughout
- Air King® exhaust fans in all bathrooms

Technology Standard Features

- Square D® surge protection on all major appliances
- Pre-wired for ceiling fans with switches in all bedrooms and great room
- High speed structured wiring for 4-line phone, video and computer Includes CAT-5 data lines and RG-6 quad shield coaxial cable (per plan)
- BRK® electrical smoke detectors with battery back-up
- BRK® carbon monoxide detector
- Cooper® switches and outlets throughout
- Minimum 150-amp electrical panel with circuit breakers

Home Is® Connected

- Qolysys IQ Panel 2 7" HD Touchscreen with built-in 5MP camera
- Skybell® Trim Plus WiFi video doorbell
- Echo Dot™ speaker with Alexa
- Z Wave™ Thermostat
- Z Wave™ Light Switch
- Z Wave™ Door Lock
- WiFi enabled garage door opener with two transmitters
- Security System with 1 motion detector and 3 door contacts

D.R. Horton's Personal Touch

- Personalized New Homeowner Orientation
- D.R. Horton 1-Year Warranty
- 10-Year RWC™ warranty to protect your investment
- 10-Year Carrier® limited warranty
- 3rd party home inspections

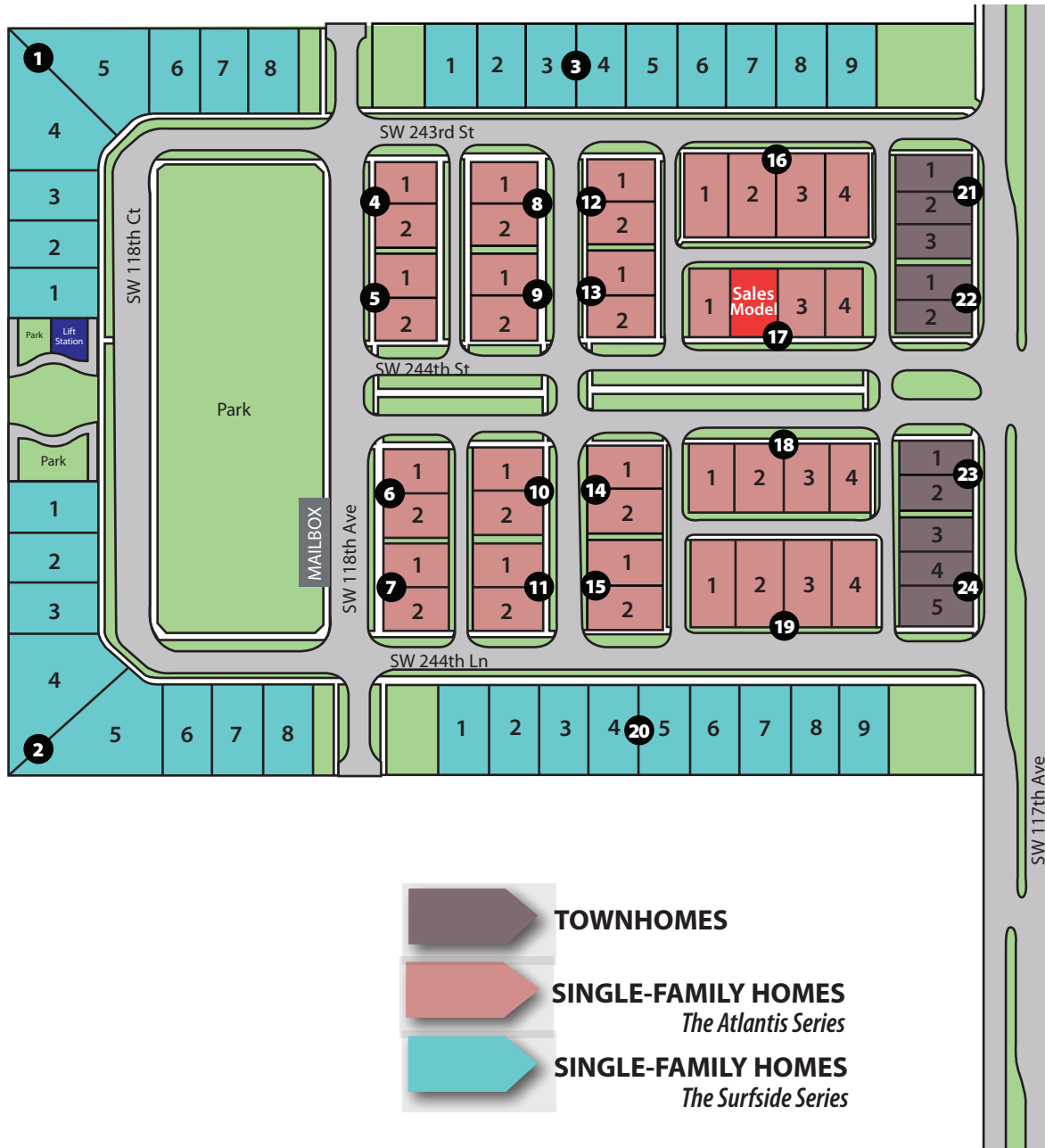
Summerville · 11471 SW 244th Terrace, Miami, FL 33032 · (855) 305.9090 · drhorton.com/sfl






Included features subject to change without prior notice or obligation, as a result, please consult with one of our sales representatives for the latest community information. Florida Certified General Contractor #CGC059394

Summerville

Miami



-  **TOWNHOMES**
-  **SINGLE-FAMILY HOMES**
The Atlantis Series
-  **SINGLE-FAMILY HOMES**
The Surfside Series

Summerville · 11713 SW 244th Terrace, Miami, FL 33032 · (855) 305.9090 · drhorton.com

D.R. Horton is equal housing opportunity builder. This map is a schematic for exhibition purposes only and does not represent the exact location or configuration of site features, lot lines, easements, amenities, units, buildings or details shown thereon. All homesite sizes are approximate and may vary. All information on this map, including availability and delivery dates is subject to change without notice or obligation. Florida Certified General Contractor #CGC059394