

NEW SINGLE-FAMILY HOMES



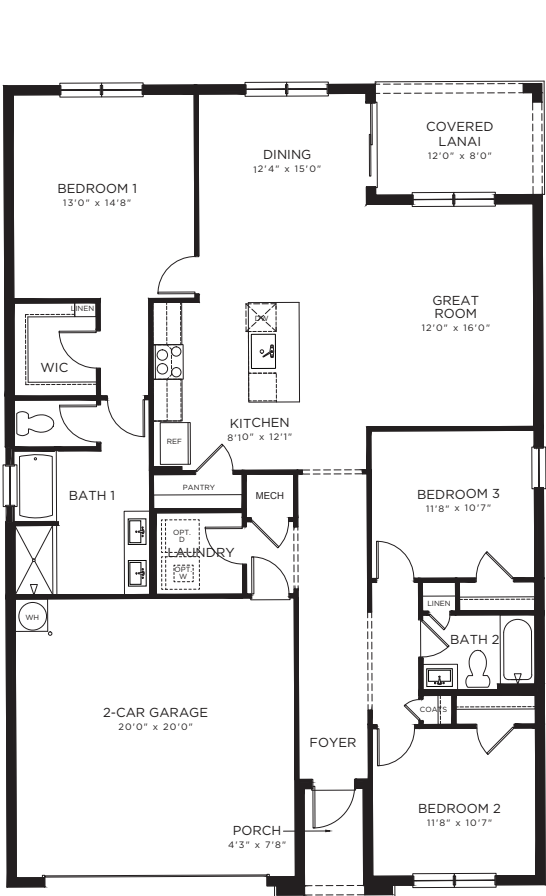
Seawalk • 1620 NE Skyhigh Terrace, Ocean Breeze, FL 34957 • (877) 478-7143

D.R. Horton is equal housing opportunity builder. Home and community information, including pricing, included features, terms, availability and amenities, are subject to change and prior sale at any time without notice or obligation. Pictures, photographs, features, colors and sizes are approximate for illustration purposes only and will vary from the homes as built. Florida Certified General Contractor #CGC059394

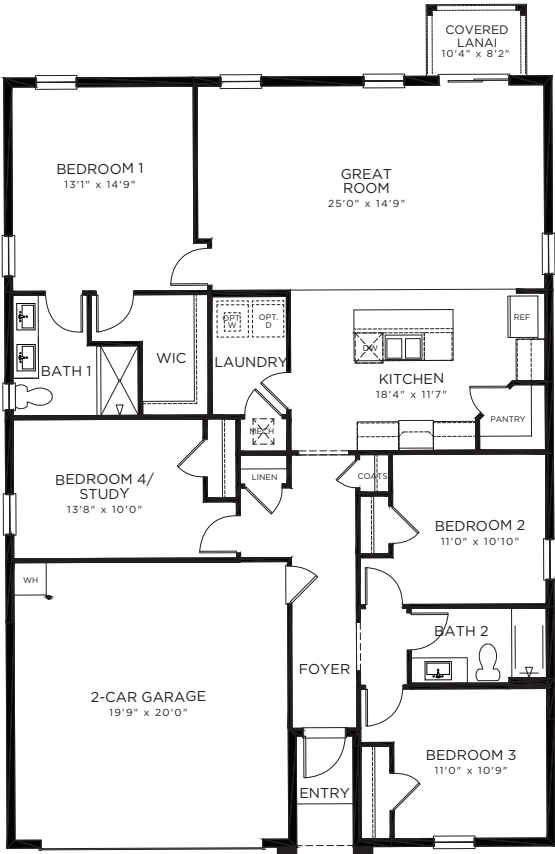
ARIA
3 Bedrooms, 2 Bathrooms, 2-Car Garage



NEUVILLE
4 Bedrooms, 2 Bathrooms, 2-Car Garage



Total A/C Sq. Ft.	1,672
Porch	36
Covered Lanai	96
2-Car Garage	432
Total Sq. Ft.	2,236



Total A/C Sq. Ft.	1,751
Entry	16
Covered Lanai	84
2-Car Garage	426
Total Sq. Ft.	2,277

D.R. Horton is equal housing opportunity builder. Pictures, photographs, features, colors, drawings, floor plans, square footages and sizes are approximate for illustration purposes only and will vary from the homes as built. All drawings are the artist's concept. Florida Certified General Contractor #CGC059394

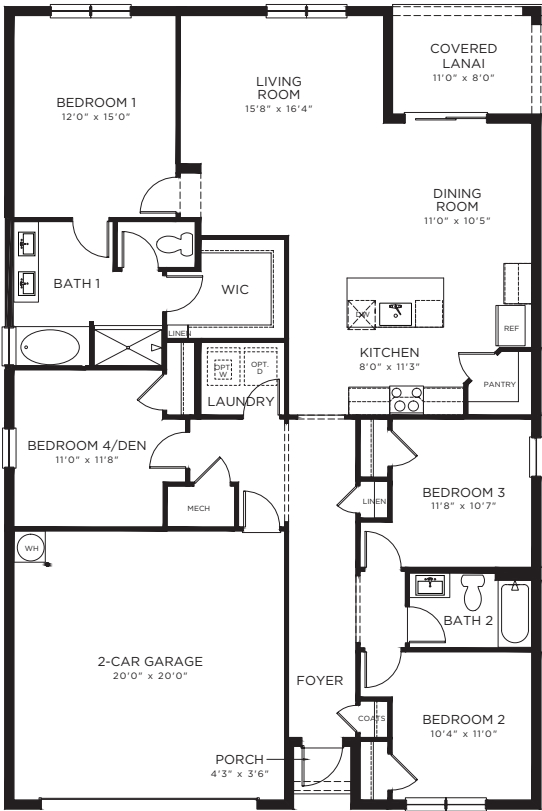
CALI

4 Bedrooms, 2 Bathrooms, 2-Car Garage

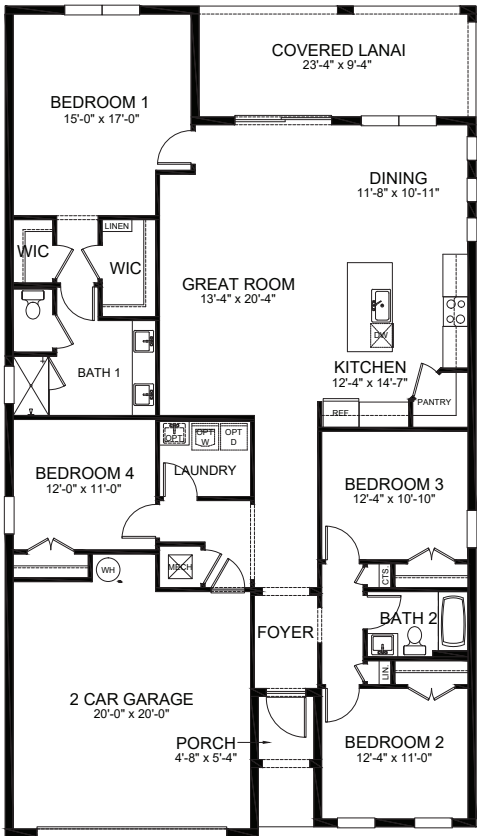


DELRAY

4 Bedrooms, 2 Bathrooms, 2-Car Garage



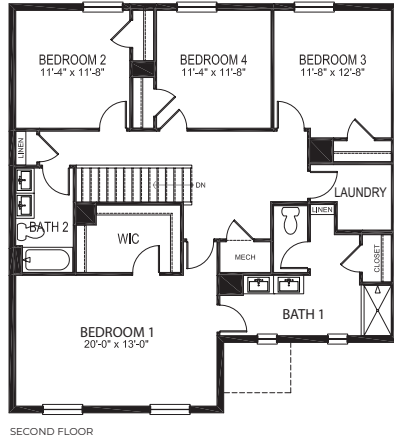
Total A/C Sq. Ft.	1,828
Porch	16
Covered Lanai	88
2-Car Garage	430
Total Sq. Ft.	2,362



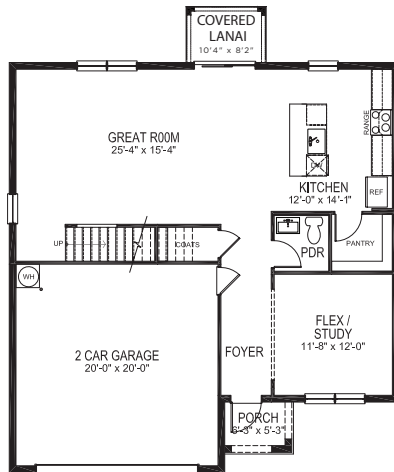
Total A/C Sq. Ft.	2,034
Porch	28
Outdoor Living	218
2-Car Garage	458
Total Sq. Ft.	2,738

GALEN

4 Bedrooms, 2.5 Bathrooms, 2-Car Garage



SECOND FLOOR

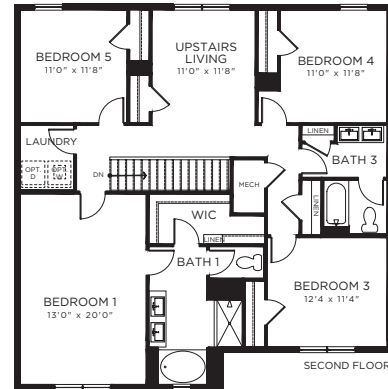


FIRST FLOOR

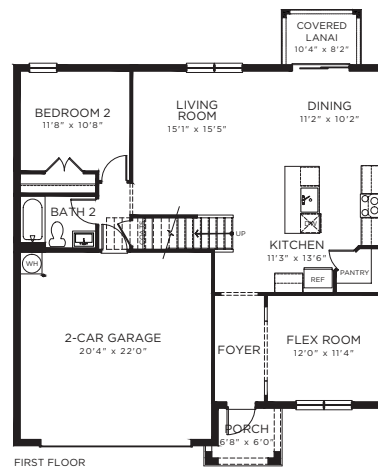
1st Floor A/C Sq. Ft.	1,019
2nd Floor A/C Sq. Ft.	1,451
Total A/C Sq. Ft.	2,470
Covered Lanai	84
Porch Elev. A	33
Porch Elev. B	87
2-Car Garage	432
Total Sq. Ft. (Elev. A)	3,019
Total Sq. Ft. (Elev. B)	3,073

HAYDEN

5 Bedrooms, 3 Bathrooms, 2-Car Garage



SECOND FLOOR



FIRST FLOOR

1st Floor A/C Sq. Ft.	1,104
2nd Floor A/C Sq. Ft.	1,541
Total A/C Sq. Ft.	2,645
Covered Lanai	84
Covered Porch Elev. C	45
Covered Porch Elev. D	115
2-Car Garage	437
Total Sq. Ft. (Elev. C)	3,211
Total Sq. Ft. (Elev. D)	3,281

D.R. Horton is equal housing opportunity builder. Pictures, photographs, features, colors, drawings, floor plans, square footages and sizes are approximate for illustration purposes only and will vary from the homes as built. All drawings are the artist's concept. Florida Certified General Contractor #CGC059394

Seawalk | Included Features

Architectural Artistry

- Architecturally designed exterior elevations with each floorplan
- Reinforced concrete monolithic foundation slab
- Masonry exterior walls
- Professionally engineered roof trusses with hurricane clips and bracing
- IKO Dimensional roof shingles with 30-year manufacturer's warranty
- Durable metal garage door
- Therma-Tru® embossed insulated fiberglass 8' front door
- Fully sodded home sites with professionally designed landscaping
- Hunter® automatic irrigation system
- Paver driveway, entry walkway and covered lanai
- Gutters in front area of driveway and entry walkway
- Exterior weather-proof outlets (G.F.I.)

Heart of the Home

- Knockdown textured finish on walls and ceilings
- Jeld-Wen® 2-panel interior doors
- Kwikset® satin-nickel keyed entry handleset
- Kwikset® satin-nickel interior door levers throughout
- Vinyl-coated ventilated shelving in all closets
- Daltile® 18" x 18" ceramic tile flooring in living areas excluding bedrooms
- Mohawk® luxurious wall-to-wall carpeting (installed over dense padding)
- Sherwin Williams® bright white interior paint
- Square style baseboards throughout

A Gourmet's Delight

- Whirlpool® Stainless Steel Appliances
 - 24 cu. ft. side by side refrigerator with ice maker
 - Glass top range with microwave above
 - Built-in dishwasher
- Quality-crafted, custom designed cabinets with 36" uppers
- LED puck lights
- Sterling® single-bowl stainless steel sink

Thoughtful Details

- Uponor® PEX plumbing water lines
- Minimum 50-gallon insulated water heater (per plan)
- Interior washer/dryer hook-up
- Carrier® energy efficient central A/C and heating system

- R-30 blown insulation above all air-conditioned living space
- R-11 BATT insulation between interior wall and garage wall
- R-4.1 insulated exterior masonry walls

Bathroom Conveniences

- Adult-height custom designed cabinets
- Cultured marble vanity countertops
- Full vanity mirrors
- Daltile® 12" x 12" ceramic tile floors in all baths
- Daltile® 12" x 12" ceramic tile walls in master bath shower walls
- Moen® faucets throughout
- Frame glass shower enclosure (per plan)
- Gerber® elongated commodes throughout
- Air King® Exhaust fans

Technology Standard Features

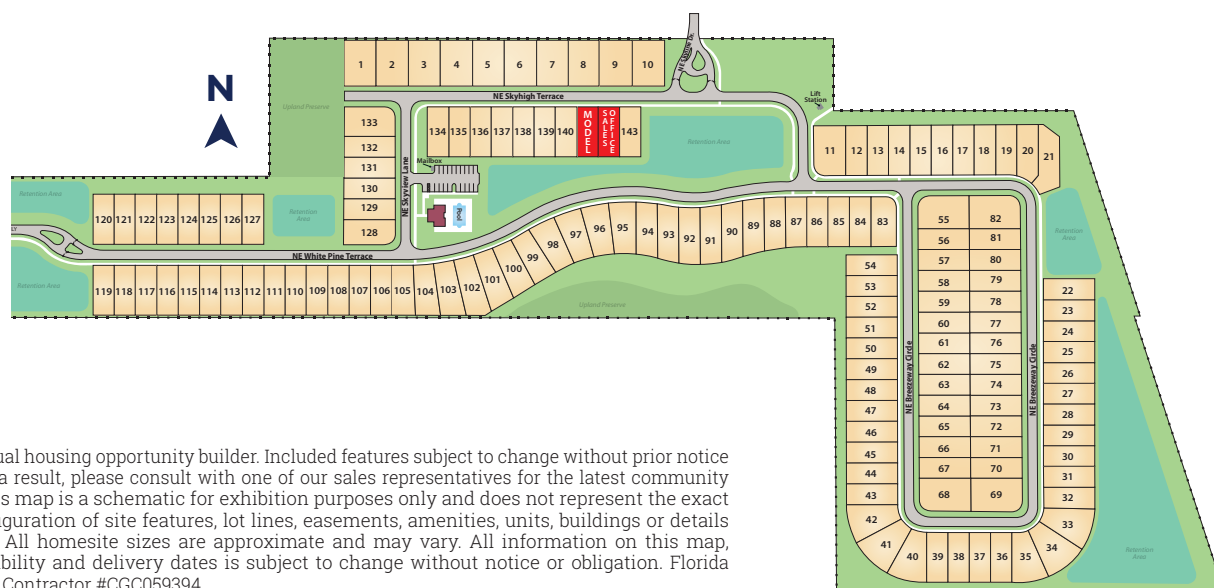
- Square D® surge protection on all major appliances
- Pre-wired for ceiling fans with switches in all bedrooms and great room
- High-speed structured wiring for 4-line phone, video and computer, includes Cat-5 data lines and RG-6 quad shield coaxial cable (per plan)
- BRK® electrical smoke detectors with battery-backup
- BRK® carbon monoxide detector
- Cooper® switches and outlets throughout
- Minimum 150-amp electrical panel with circuit breakers

Home Is[®] Connected

- Qolysys IQ Panel II - 7" HD Touchscreen with built-in 5MP camera
- Skybell® Trim Plus WiFi video doorbell
- Echo Dot™ speaker with Alexa
- Z Wave™ Thermostat
- Z Wave™ Light Switch
- Z Wave™ Door Lock
- WiFi enabled garage door opener with two transmitters
- Security System with 1 motion detector and 3 door contacts

D.R. Horton's Personal Touch

- Personalized New Homeowner Orientation
- D.R. Horton 1-Year Warranty
- 10-Year RWC™ warranty to protect your investment
- 10-Year Carrier® limited warranty
- 3rd party home inspections



D.R. Horton is equal housing opportunity builder. Included features subject to change without prior notice or obligation, as a result, please consult with one of our sales representatives for the latest community information. This map is a schematic for exhibition purposes only and does not represent the exact location or configuration of site features, lot lines, easements, amenities, units, buildings or details shown thereon. All homesite sizes are approximate and may vary. All information on this map, including availability and delivery dates is subject to change without notice or obligation. Florida Certified General Contractor #CGC059394