

NEW TOWNHOMES

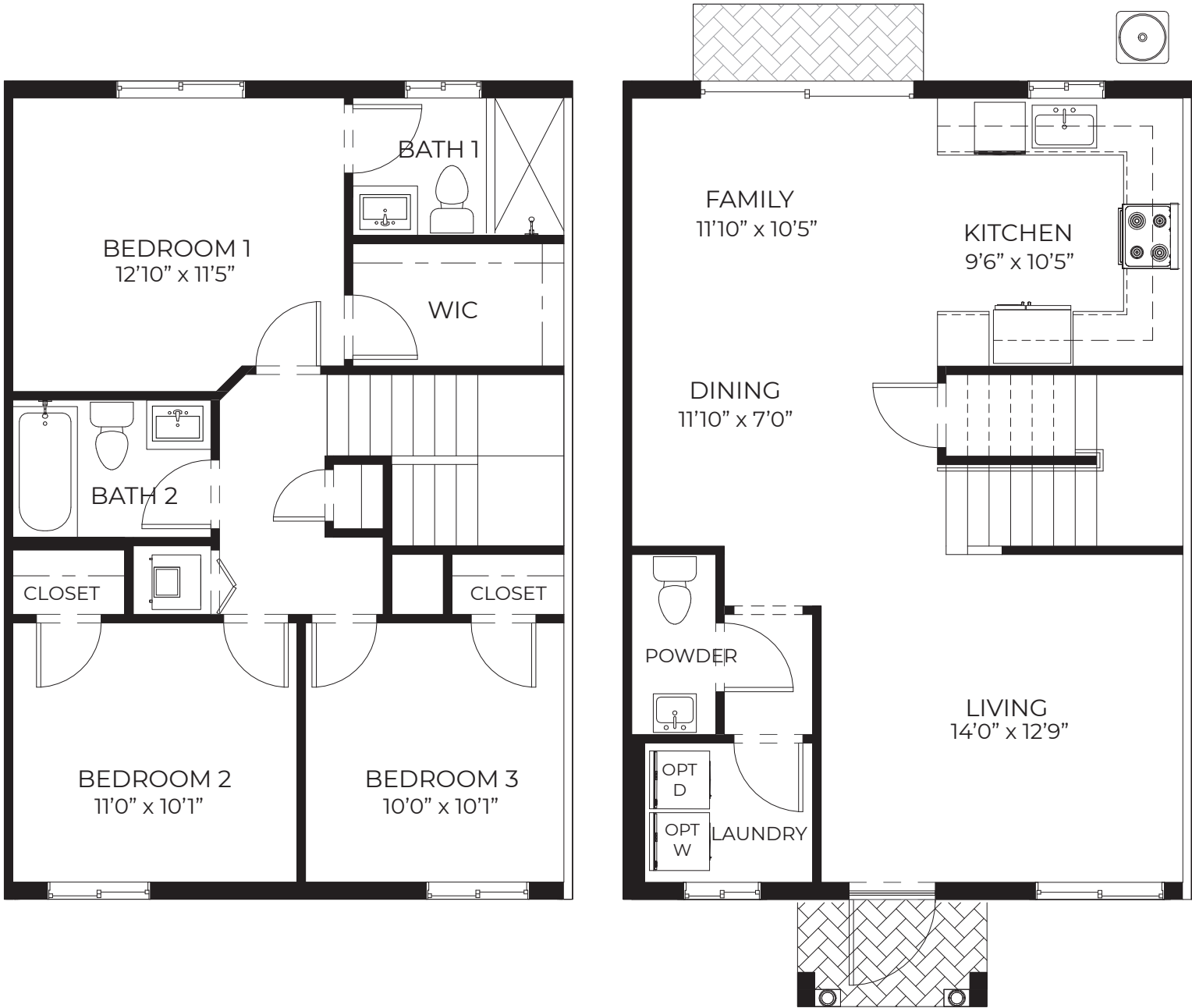


The Towns at Seascape • 2415 SE 11th Street, Homestead, FL 33035 • 855-580-6844

D.R. Horton is equal housing opportunity builder. Home and community information, including pricing, included features, terms, availability and amenities, are subject to change and prior sale at any time without notice or obligation. Pictures, photographs, features, colors and sizes are approximate for illustration purposes only and will vary from the homes as built. Florida Certified General Contractor #CGC059394

HAVANA

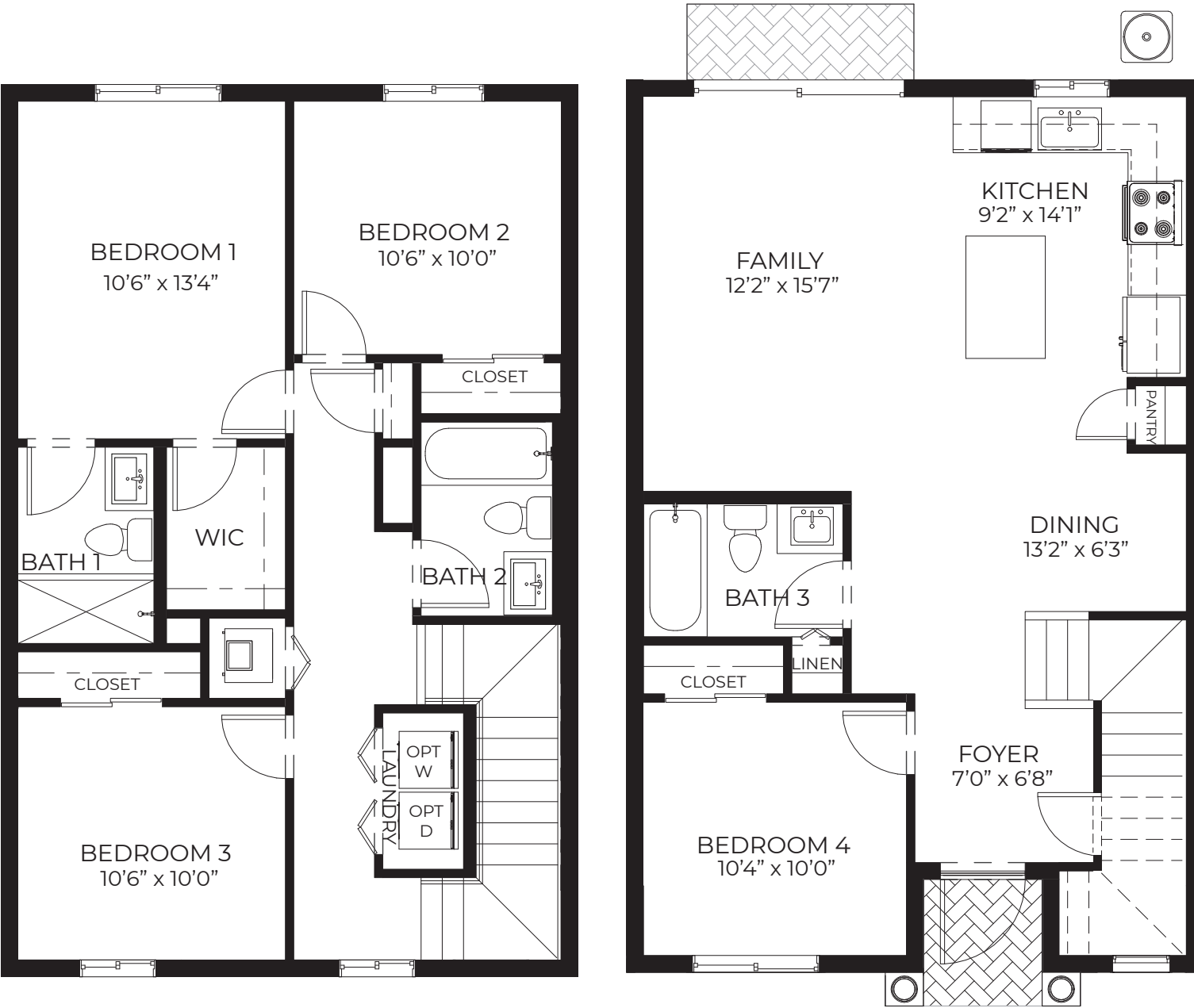
3 Bedrooms, 2.5 Bathrooms



1st Floor A/C Sq. Ft.	700
2nd Floor A/C Sq. Ft.	648
Total A/C Sq. Ft.	1,348
Entry	31
Total Sq. Ft.	1,379

D.R. Horton is equal housing opportunity builder. Pictures, photographs, features, colors, drawings, floor plans, square footages and sizes are approximate for illustration purposes only and will vary from the homes as built. All drawings are the artist's concept. Florida Certified General Contractor #CGC059394

NAPA
4 Bedrooms, 3 Bathrooms



1st Floor A/C Sq. Ft.	761
2nd Floor A/C Sq. Ft.	719
Total A/C Sq. Ft.	1,480
Entry	27
Total Sq. Ft.	1,507

D.R. Horton is equal housing opportunity builder. Pictures, photographs, features, colors, drawings, floor plans, square footages and sizes are approximate for illustration purposes only and will vary from the homes as built. All drawings are the artist's concept. Florida Certified General Contractor #CGC059394

The Towns at Seascap | Included Features

Architectural Artistry

- Reinforced concrete monolithic foundation slab
- Masonary exterior walls
- Professionally engineered roof trusses with hurricane clips and bracing
- Baked in color through cement roof tiles
- Paver entry and patio
- Therma-Tru® embossed insulated fiberglass front door
- Fully sodded home sites with professionally designed landscaping
- Hurricane storm panels

Heart of the Home

- Knockdown textured finish on walls and ceilings
- Jeld-Wen® 2-panel interior doors
- Kwikset® satin-nickel keyed entry handleset
- Kwikset® satin-nickel interior door levers throughout
- Vinyl-coated ventilated shelving in all closets
- Daltile® 18" x 18" ceramic tile flooring in living areas
- Mohawk® luxurious wall-to-wall carpeting (installed over dense padding)
- Sherwin Williams® bright white interior paint
- Square style baseboards throughout

A Gourmet's Delight

- Whirlpool® Stainless Steel Appliances
 - 25 cu. ft. side by side refrigerator with ice maker
 - Gas range with microwave above
 - Built-in dishwasher
- Moen® garbage disposal
- Quality-crafted, custom designed cabinets with 30" uppers
- Sterling® single-bowl stainless steel sink

Thoughtful Details

- Uponor® PEX plumbing water lines
- Minimum 50 gallon insulated water heater
- Interior washer / dryer hook-up
- Carrier® energy efficient central A/C and heating system
- R-30 blown insulation above all air-conditioned living space
- R-13 insulation between interior wall and garage wall
- Fi Foil insulated exterior masonry walls

Bathroom Conveniences

- Adult-height custom designed cabinets with cultured marble tops
- Full vanity mirrors
- Daltile® 12" x 12" ceramic tile floors
- Daltile® 12" x 12" ceramic tile shower walls in all baths
- Framed glass shower enclosure (per plan)
- Moen® faucets throughout
- Gerber® elongated commodes throughout
- Air King® Exhaust fans

Technology Standard Features

- Square D® surge protection on all major appliances
- Pre-wired for ceiling fans with switches in all bedrooms and great room
- High speed structured wiring for 4-line phone, video and computer, includes Cat-5 data lines and RG-6 quad shield coaxial cable (per plan)
- BRK® electrical smoke detectors with battery-backup
- BRK® carbon monoxide detector
- Cooper® switches and outlets throughout
- Minimum 150-amp electrical panel with circuit breakers

Home Is® Connected

- Qolysys IQ Panel II 7" HD Touchscreen with built-in 5MP camera
- Skybell® Trim Plus WiFi video doorbell
- Echo Dot™ speaker with Alexa
- Z Wave™ Thermostat
- Z Wave™ Light Switch
- Z Wave™ Door Lock
- Security System with 1 motion detector and 2 door contacts

D.R. Horton's Personal Touch

- Personalized New Homeowner Orientation
- D.R. Horton 1-Year Warranty
- 10-Year RWCT™ warranty to protect your investment
- 10-Year Carrier® limited warranty
- 3rd party home inspections



D.R. Horton is equal housing opportunity builder. Included features subject to change without prior notice or obligation, as a result, please consult with one of our sales representatives for the latest community information. This map is a schematic for exhibition purposes only and does not represent the exact location or configuration of site features, lot lines, easements, amenities, units, buildings or details shown thereon. All homesite sizes are approximate and may vary. All information on this map, including availability and delivery dates is subject to change without notice or obligation. Florida Certified General Contractor #CGC059394