

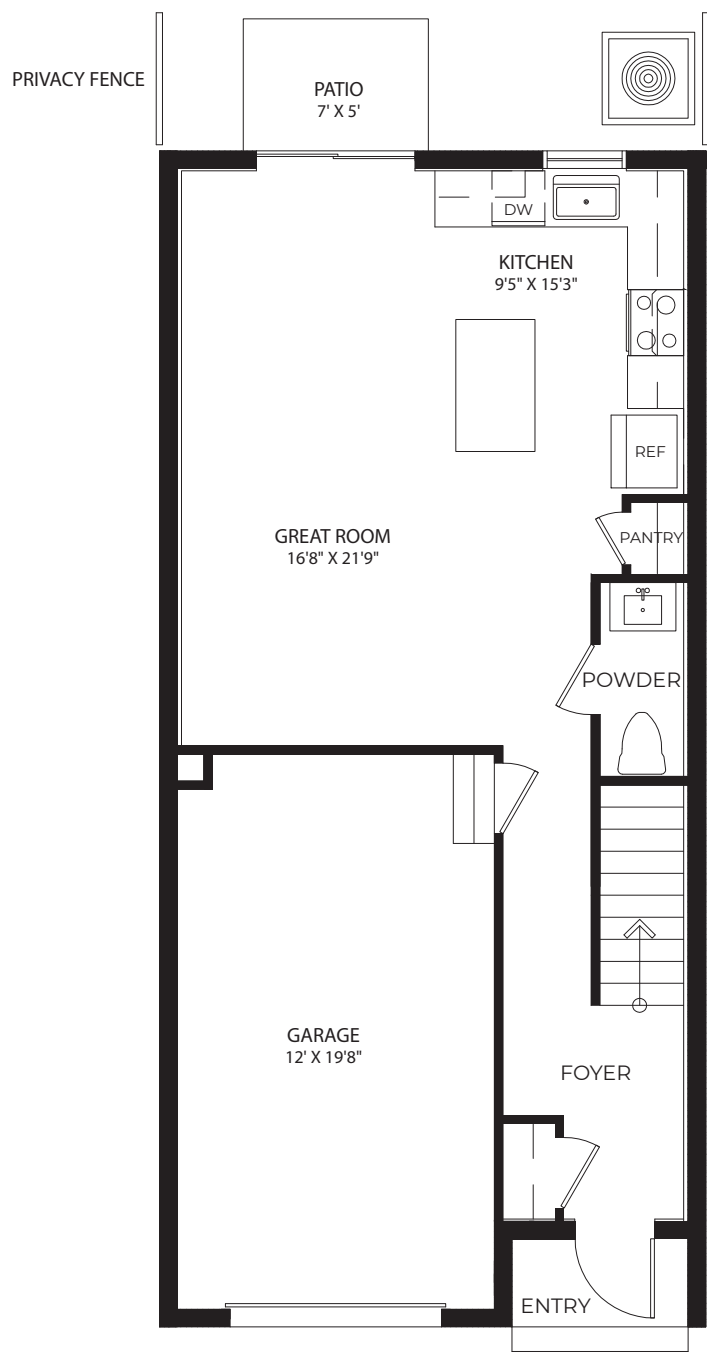
NEW TOWNHOMES



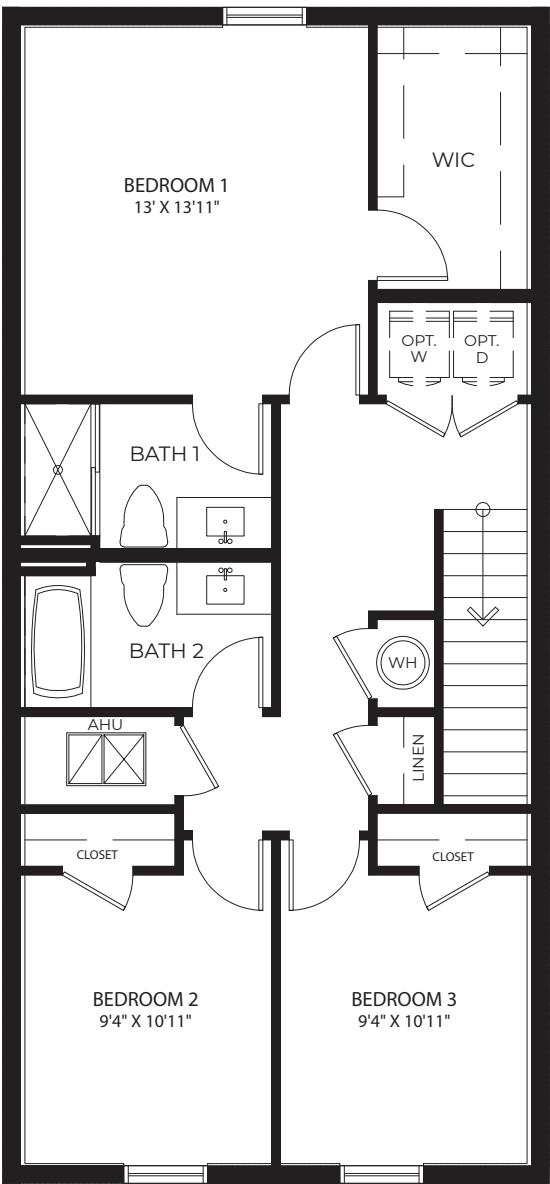
Regal Palm Square • 781 SW 11th St., Florida City, FL 33034 • 855-580-6845
(GPS: SW 187th Ave. & SW 356th Street)

D.R. Horton is equal housing opportunity builder. Home and community information, including pricing, included features, terms, availability and amenities, are subject to change and prior sale at any time without notice or obligation. Pictures, photographs, features, colors and sizes are approximate for illustration purposes only and will vary from the homes as built. Florida Certified General Contractor #CGC059394

BELLA
3 Bedrooms, 2.5 Bathrooms, 1-Car Garage



FIRST FLOOR



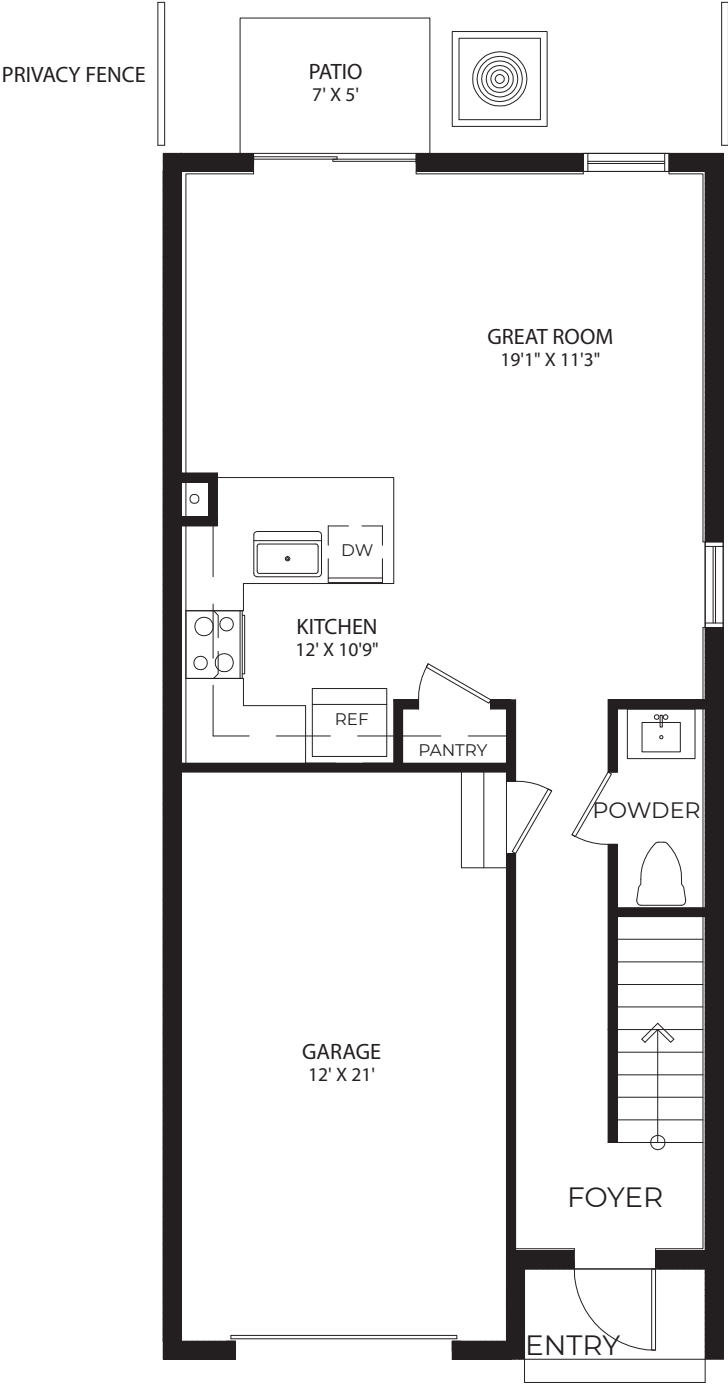
SECOND FLOOR

1st Floor A/C Sq. Ft.....	597
2nd Floor A/C Sq. Ft.	849
Total A/C Sq. Ft.	1,446
Garage.....	269
Entry.....	24
Total.....	1,739

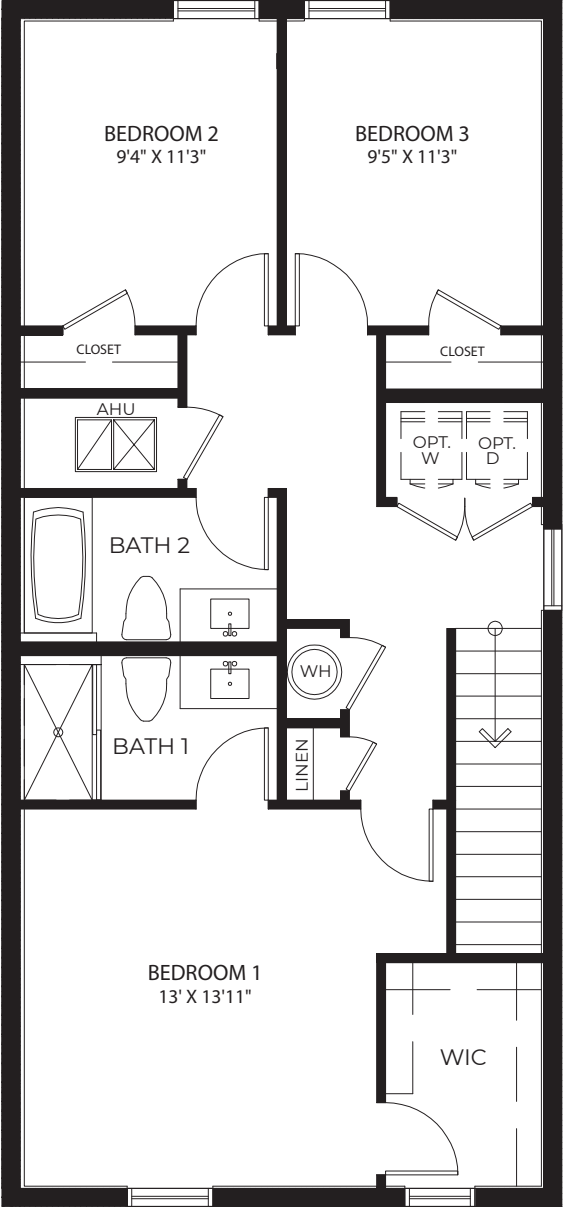
D.R. Horton is equal housing opportunity builder. Pictures, photographs, features, colors, drawings, floor plans, square footages and sizes are approximate for illustration purposes only and will vary from the homes as built. All drawings are the artist's concept. Florida Certified General Contractor #CGC059394

TERRA

3 Bedrooms, 2.5 Bathrooms, 1-Car Garage



FIRST FLOOR



SECOND FLOOR

1st Floor A/C Sq. Ft.....	611
2nd Floor A/C Sq. Ft.	861
Total A/C Sq. Ft.	1,472
Garage.....	269
Entry.....	24
Total.....	1,765

D.R. Horton is equal housing opportunity builder. Pictures, photographs, features, colors, drawings, floor plans, square footages and sizes are approximate for illustration purposes only and will vary from the homes as built. All drawings are the artist's concept. Florida Certified General Contractor #CGC059394

Regal Palm | Included Features

ARCHITECTURAL ARTISTRY

- Reinforced 2500 psi concrete monolithic foundation slab
- Concrete block exterior walls
- Professionally engineered roof with hurricane clips and bracing
- Two architecturally designed exterior elevations available
- Designer exterior color schemes
- Durable metal garage door
- Hurricane storm panels
- Therma Tru® embossed insulated front door
- Paver driveway, entry walkway, and patio
- IKO Dimensional roof shingles with 30-year manufacturer's warranty
- Exterior hose bib connection
- Exterior weather proof outlets (G.F.I.) in front and rear
- Fully sodded homesites with professionally designed landscaping

HEART OF THE HOME

- Knockdown textured finish on walls and ceilings
- Sherwin Williams® interior paint and bright white ceilings
- JeldWen® raised panel interior doors
- Square style baseboards throughout
- Kwikset® satin nickel interior door levers throughout
- Kwikset® satin nickel keyed entry & deadbolt
- Vinyl-coated ventilated shelving in all closets
- Daltile® 18" x 18" Ceramic tile flooring in all living areas
- Mohawk® wall-to-wall carpeting (installed over dense padding)
- Maxim® designer lighting fixtures (per plan)

A GOURMET'S DELIGHT

- Whirlpool® Stainless Steel Appliances:
Range oven with microwave above
25 cu. ft. side by side refrigerator
Dishwasher
- Quality crafted custom designed wood cabinets
- Sterling® single bowl stainless steel kitchen sink and Moen® single lever faucet
- Moen® garbage disposal
- Ice maker line with shut-off valve

THOUGHTFUL DETAILS

- 50 gallon insulated water heater
- Uponor PEX plumbing water lines
- Interior washer/dryer hook-up
- BRK® electrical smoke detectors with battery back-up
- BRK® carbon monoxide detector
- Minimum 150-amp electrical panel with circuit breakers
- Copper wiring in the interior of the home

- Carrier® central A/C and heating system with programmable digital thermostat
- R-4.1 insulated exterior masonry walls
- R-30 blown insulation above all air-conditioned living space
- R-11 BATT insulation between interior wall and garage wall

BATHROOM CONVENIENCES

- 12" x 12" ceramic tile floors in all baths
- 12" x 12" tile walls in master bath
- Adult height custom designed wood cabinets in all baths
- Full vanity mirrors in all baths
- Gerber® elongated commodes throughout
- Moen® faucets throughout
- Air King® exhaust fan, vented to exterior

TECHNOLOGY STANDARD FEATURES

- Square D® surge protection on all major appliances
- Pre-wired for ceiling fans with switches in all bedrooms and family room
- High speed structured wiring for 4-line phone, video and computer Includes CAT-5 data lines in bedroom 1 and kitchen and RG-6 quad shield coaxial cable in bedroom 1 and living room

HOME ISSM CONNECTED

- Qolysys IQ Panel II - 7" HD Touchscreen with built-in 5MP camera
- Skybell® Trim Plus WiFi video doorbell
- Echo Dot™ speaker with Alexa
- Z Wave™ Thermostat
- Z Wave™ Light Switch
- Z Wave™ Door Lock
- WiFi enabled garage door opener with two transmitters
- Security System with 1 motion detector and 3 door contacts

D.R. HORTON'S PERSONAL TOUCH

- Personalized New Homeowner Orientation
- Express Homes 1-Year Warranty
- 10-Year RWC™ warranty to protect your investment
- 10-Year Carrier® limited warranty

COMMUNITY

- Pavilion
- Tot-Lot



D.R. Horton is equal housing opportunity builder. Included features subject to change without prior notice or obligation, as a result, please consult with one of our sales representatives for the latest community information. This map is a schematic for exhibition purposes only and does not represent the exact location or configuration of site features, lot lines, easements, amenities, units, buildings or details shown thereon. All homesite sizes are approximate and may vary. All information on this map, including availability and delivery dates is subject to change without notice or obligation. Florida Certified General Contractor #CGC059394