



D·R·HORTON[®]
America's Builder

MARBELLA

TOWNHOMES
Homestead

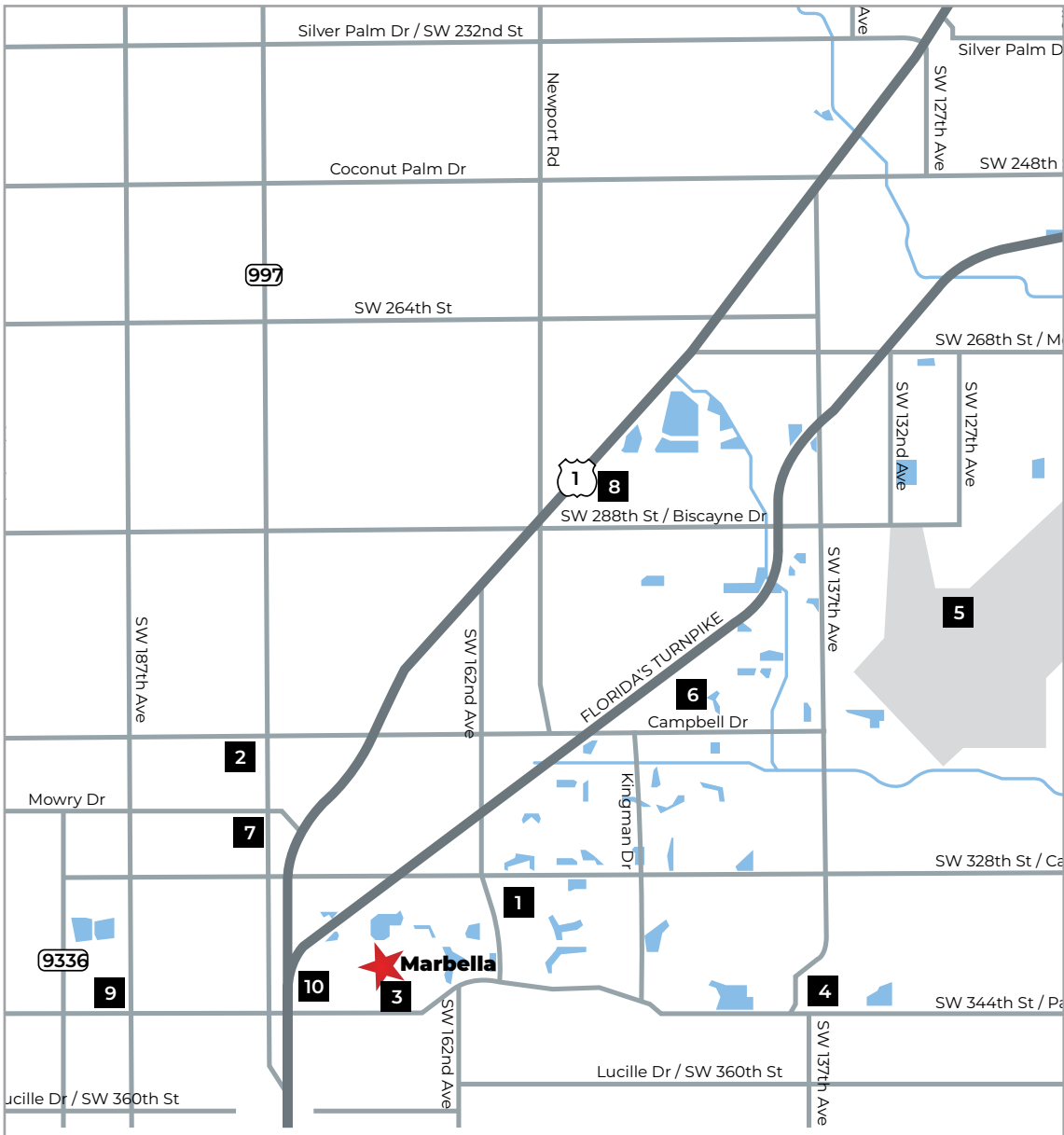


D·R·HORTON[®]
America's Builder

MARBELLA

AMENITIES

Clubhouse | Swimming Pool
Community Lake | Observation Deck with Walking Path



1. Gateway Environmental K-8 Learning Center
2. Homestead Middle School
3. Homestead Senior High
4. Homestead Miami Speedway
5. Homestead Air Reserve Base
6. Homestead Hospital
7. Homestead Station Shopping Mall
8. Coral Castle
9. Post Office
10. Florida Keys Outlet Marketplace

D·R·HORTON[®]
America's Builder

MARBELLA

NEIGHBORHOOD
Map



D·R·HORTON[®]
America's Builder

MARBELLA

INCLUDED
Features

Architectural Artistry

- Reinforced concrete monolithic foundation slab
- Masonry exterior walls
- Professionally engineered roof trusses with hurricane clips and bracing
- IKO Dimensional roof shingles with 30-year manufacturer's warranty
- Paver driveway, walkway, entry and porch
- Therma-Tru® embossed insulated fiberglass front door
- Fully sodded home sites with professionally designed landscaping
- Durable metal garage door
- Hurricane storm panels

Heart of the Home

- Knockdown textured finish on walls and ceilings
- Jeld-Wen® 2-panel interior doors
- Kwikset® satin-nickel keyed entry handleset
- Kwikset® satin-nickel interior door levers throughout
- Vinyl-coated ventilated shelving in all closets
- Daltile® 18" x 18" ceramic tile flooring in living areas
- Mohawk® luxurious wall-to-wall carpeting (installed over dense padding)
- Sherwin Williams® bright white interior paint
- Square style baseboards throughout

A Gourmet's Delight

- Whirlpool® Stainless Steel Appliances
 - 25 cu. ft. side by side refrigerator with ice maker
 - Glass top range with microwave above
 - Built-in dishwasher
- Moen® garbage disposal
- Quality-crafted, custom designed cabinets with 36" uppers
- Sterling® single-bowl stainless steel sink

Thoughtful Details

- Uponor® PEX plumbing water lines
- Minimum 50 gallon insulated water heater
- Interior washer / dryer hook-up
- Energy efficient central A/C and heating system
- R-30 blown insulation above all air-conditioned living space
- R-4.1 insulation between interior wall and garage wall
- Fi Foil insulated exterior masonry walls

Bathroom Conveniences

- Adult-height custom designed cabinets
- Full vanity mirrors
- Daltile® 12" x 12" ceramic tile floors
- Daltile® 12" x 12" ceramic tile shower walls in all baths
- Framed glass shower enclosure (per plan)
- Moen® faucets throughout
- Gerber® elongated commodes throughout
- Air King® Exhaust fans

Technology Standard Features

- Square D® surge protection on all major appliances
- Pre-wired for ceiling fans with switches in all bedrooms and great room
- High speed structured wiring for 4-line phone, video and computer, includes Cat-5 data lines and RG-6 quad shield coaxial cable (per plan)
- BRK® electrical smoke detectors with battery-backup
- BRK® carbon monoxide detector
- Cooper® switches and outlets throughout
- Minimum 150-amp electrical panel with circuit breakers

Home Is® Connected

- Qolysys IQ Panel II 7" HD Touchscreen with built-in 5MP camera
- Skybell® Trim Plus WiFi video doorbell
- Echo Dot™ speaker with Alexa
- Z Wave™ Thermostat
- Z Wave™ Light Switch
- Z Wave™ Door Lock
- WiFi enabled garage door opener with two transmitters
- Security System with 1 motion detector and 3 door contacts

D.R. Horton's Personal Touch

- Personalized New Homeowner Orientation
- D.R. Horton 1-Year Warranty
- 10-Year RWC™ warranty to protect your investment
- 10-Year Carrier® limited warranty
- 3rd party home inspections

Community

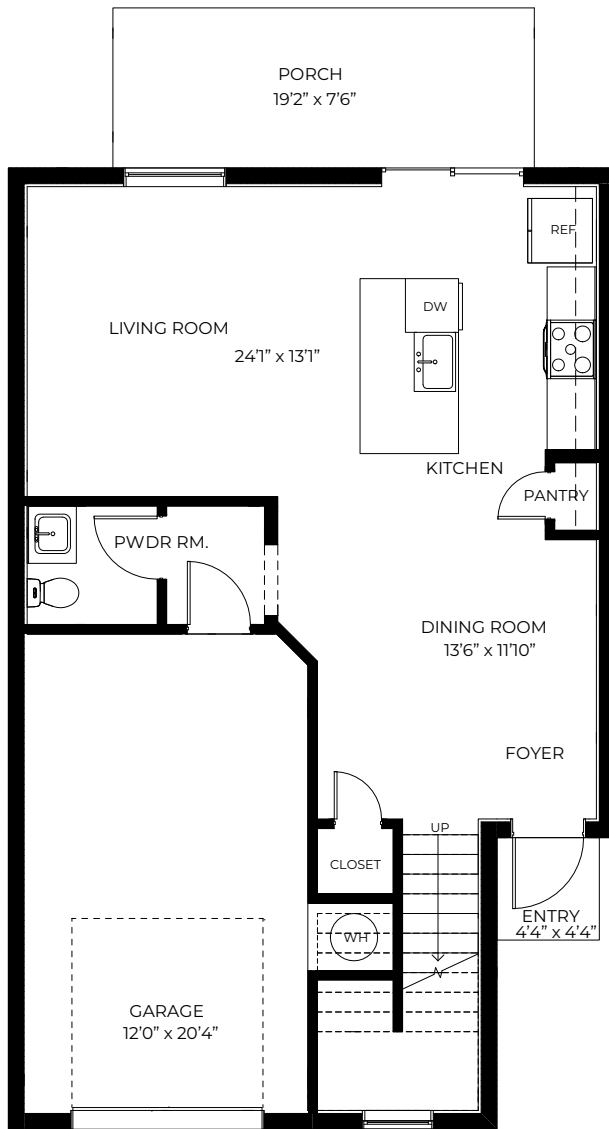
- Clubhouse
- Swimming Pool
- Lake
- Observation Deck with Walking Path



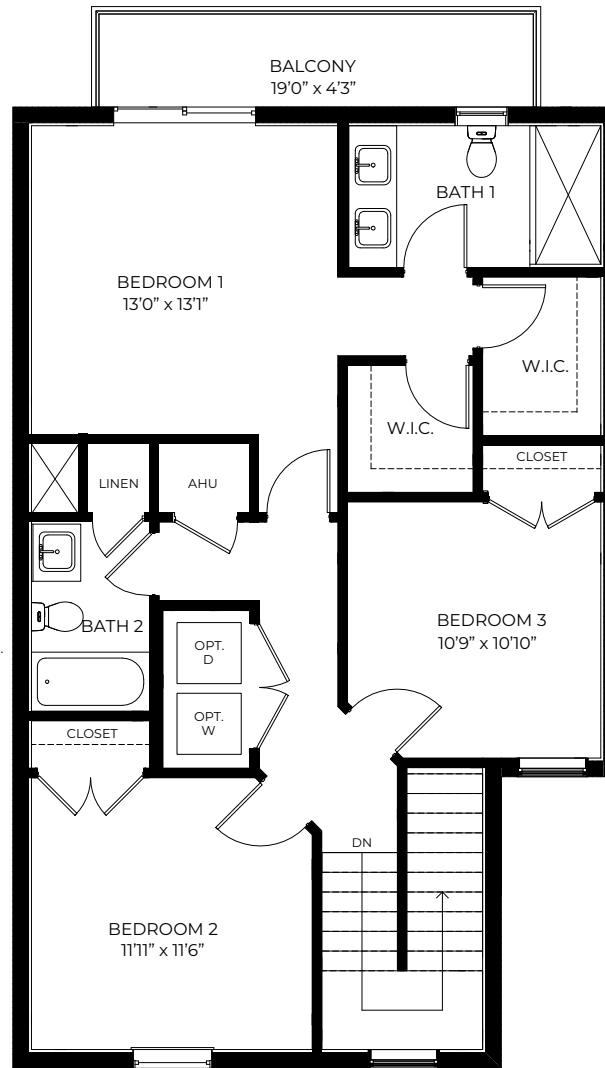
D·R·HORTON[®]
America's Builder

MARBELLA

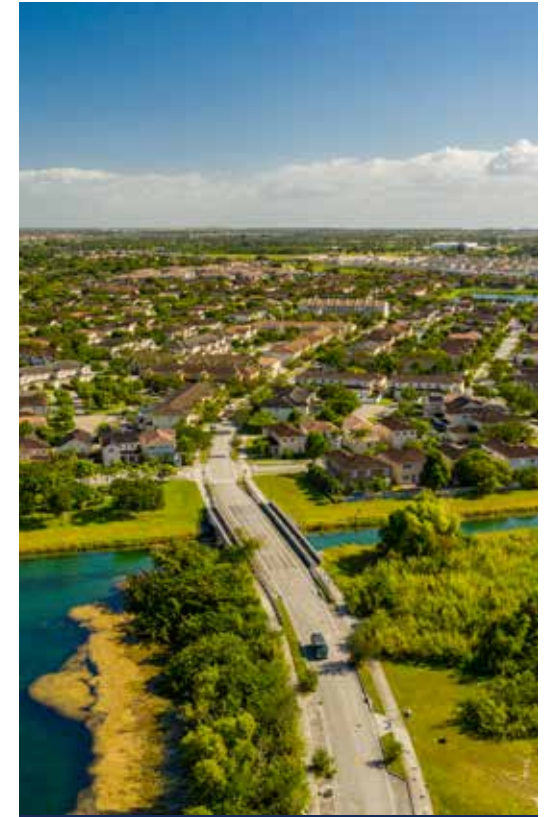
FLOORPLANS



1ST FLOOR



2ND FLOOR



CORDOBA

3 Bedrooms
2.5 Bathrooms
1-Car Garage

1st Floor A/C Sq. Ft.....	680
2nd Floor A/C Sq. Ft.....	960
Total A/C Sq. Ft.....	1,640
Entry.....	20
Porch.....	144
Balcony.....	80
Garage.....	276
Total Sq. Ft.	2,160



MARBELLA



DEL PRADO

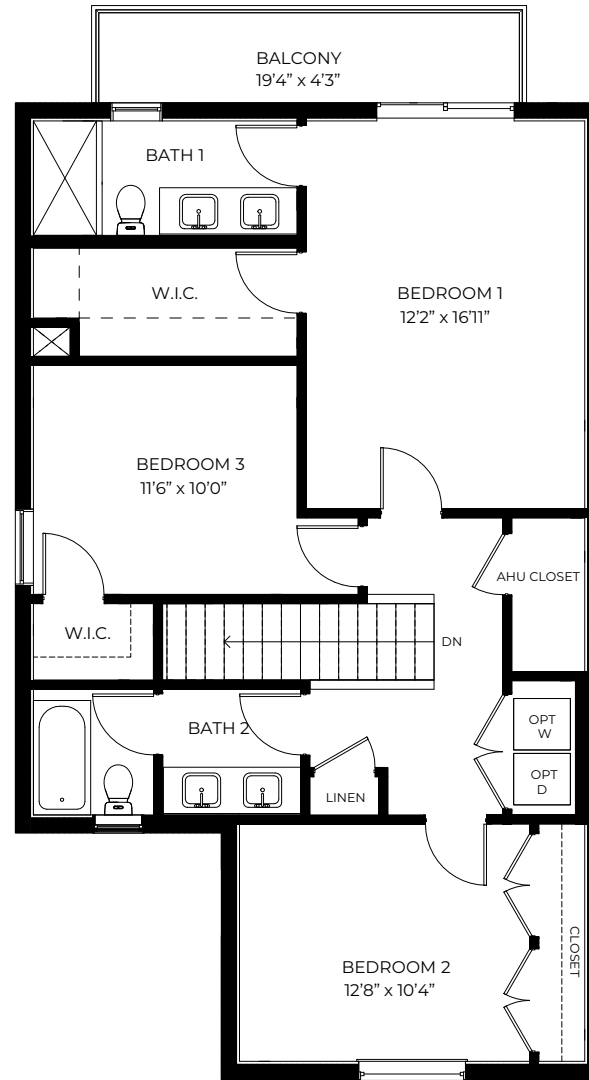
3 Bedrooms
2.5 Bathrooms
1-Car Garage

1st Floor A/C Sq. Ft.	690
2nd Floor A/C Sq. Ft.	1,038
Total A/C Sq. Ft.	1,728
Entry	83
Porch	144
Balcony	80
Garage	264
Total Sq. Ft.	2,299

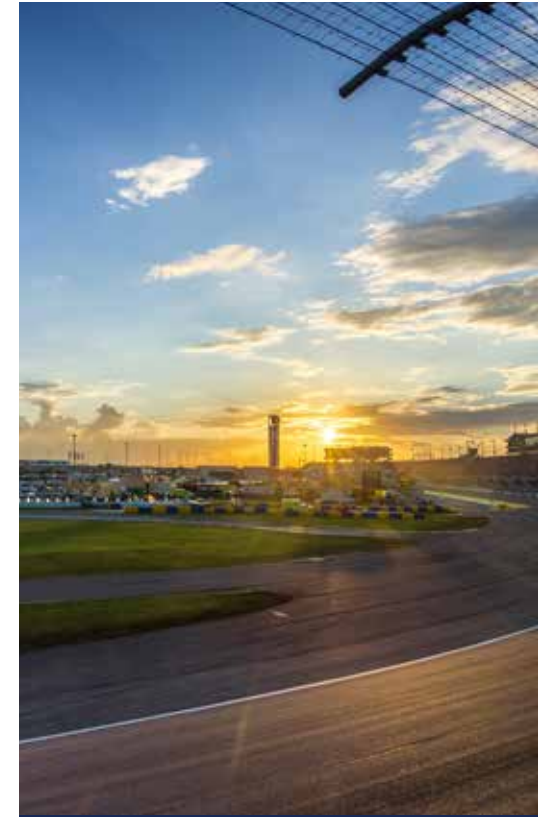




1ST FLOOR



2ND FLOOR



ELDA

4 Bedrooms
3 Bathrooms
1-Car Garage

1st Floor A/C Sq. Ft.....	819
2nd Floor A/C Sq. Ft.....	984
Total A/C Sq. Ft.....	1,803
Entry.....	40
Porch.....	144
Balcony.....	80
Garage.....	262
Total Sq. Ft.	2,329



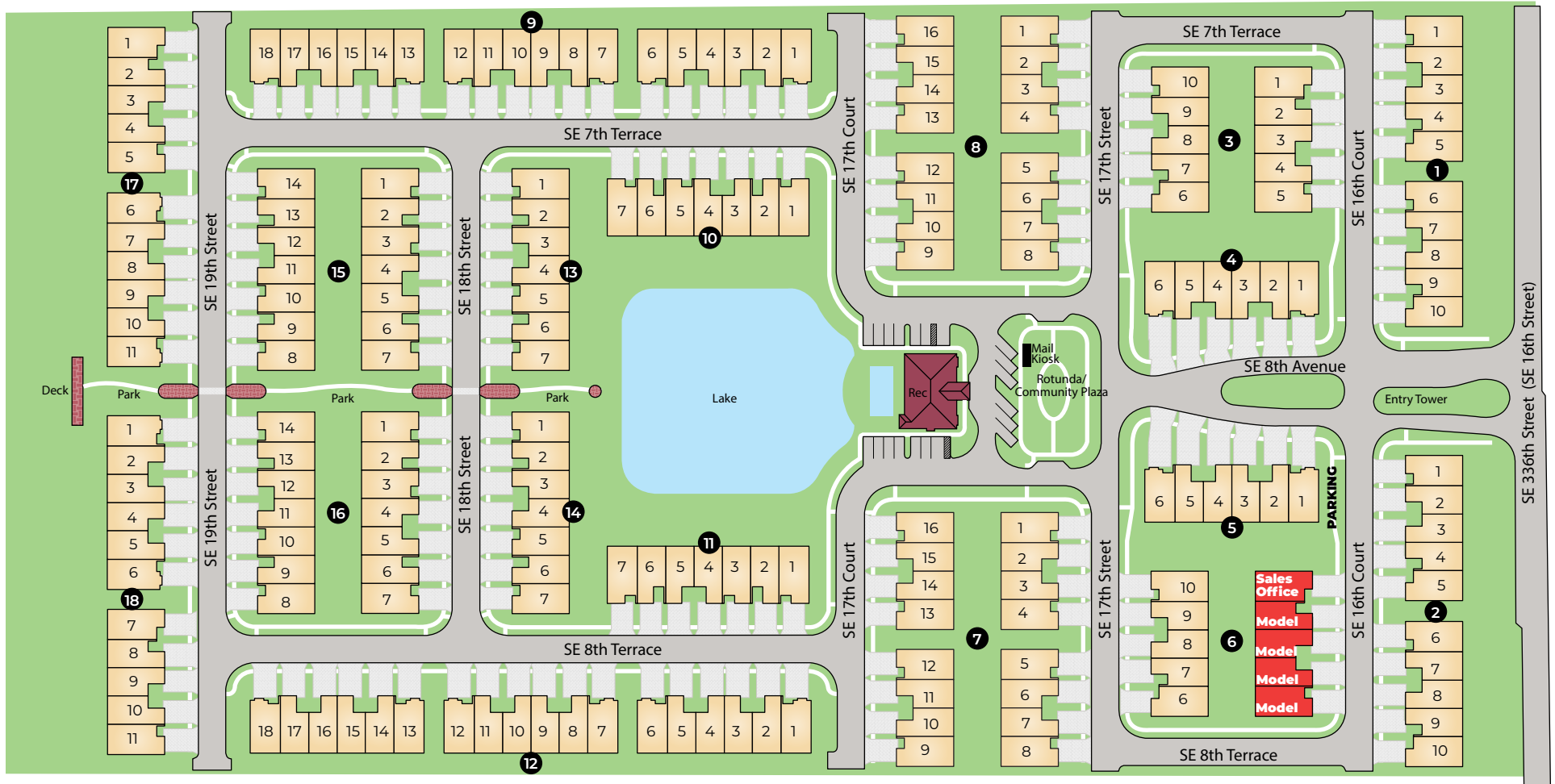
FRONTERA

4 Bedrooms
2.5 Bathrooms
1-Car Garage

1st Floor A/C Sq. Ft.	808
2nd Floor A/C Sq. Ft.	1,063
Total A/C Sq. Ft.	1,871
Entry	52
Porch	144
Balcony	80
Garage	255
Total Sq. Ft.	2,402

D·R·HORTON®
America's Builder

MARBELLA



COMMUNITY Siteplan

D·R·HORTON
America's Builder

MARBELLA

820 SE 16th Court, Homestead FL 33034

855.647.4247 • drhorton.com

D.R. Horton is equal housing opportunity builder. Home and community information, including pricing, included features, terms, availability and amenities, are subject to change and prior sale at any time without notice or obligation. Pictures, photographs, features, colors, drawings, floor plans, square footages and sizes are approximate for illustration purposes only and will vary from the homes as built. All drawings are the artist's concept. Buyer should conduct his or her own investigation of the present and future availability of school districts and school assignments. D.R. Horton has no control or responsibility for any changes to school districts or school assignments should they occur in the future. Home Is Connected, A smart home is a convenient home setup where appliances and devices can be automatically controlled remotely from any internet-connected place using a mobile or other networked device. Certified General Contractor License Number CGC05939