

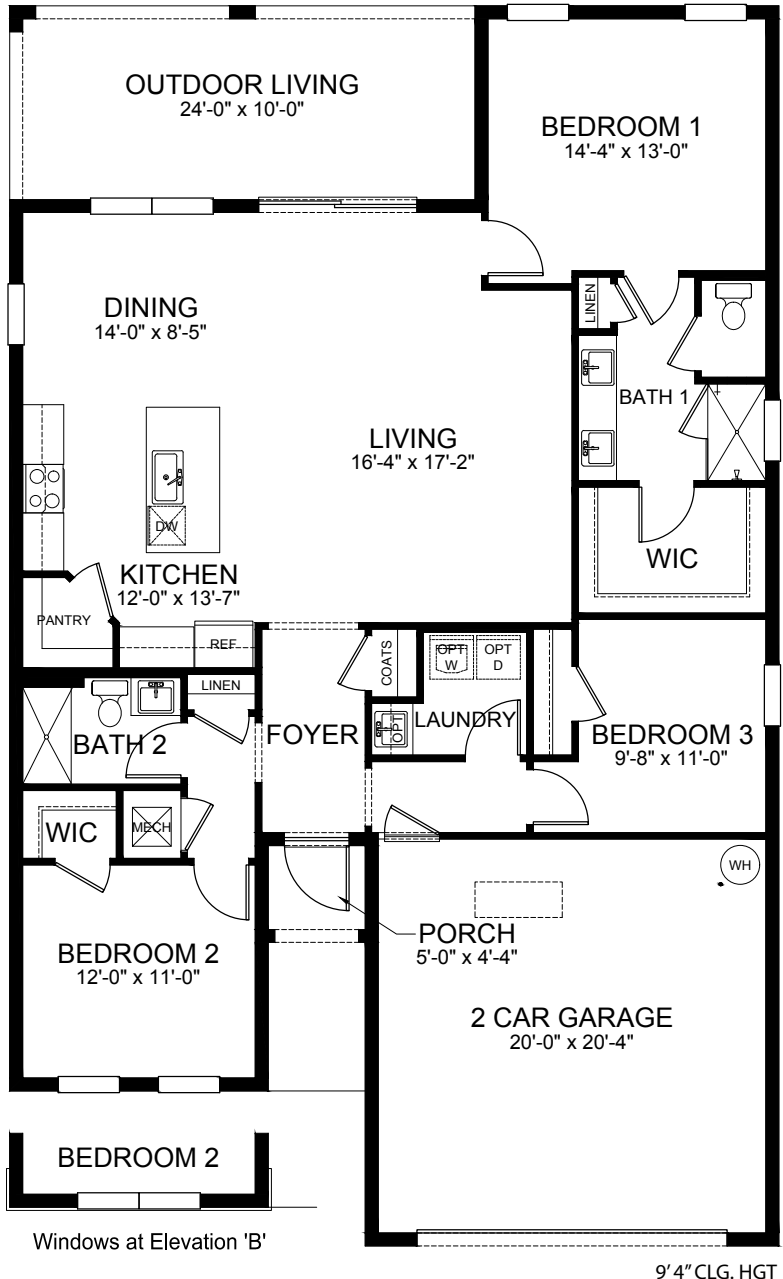
NEW SINGLE-FAMILY HOMES



Jensen Village • 2100 NW Golden Oak Trail, Jensen Beach, FL 34957 • (855) 243-0731

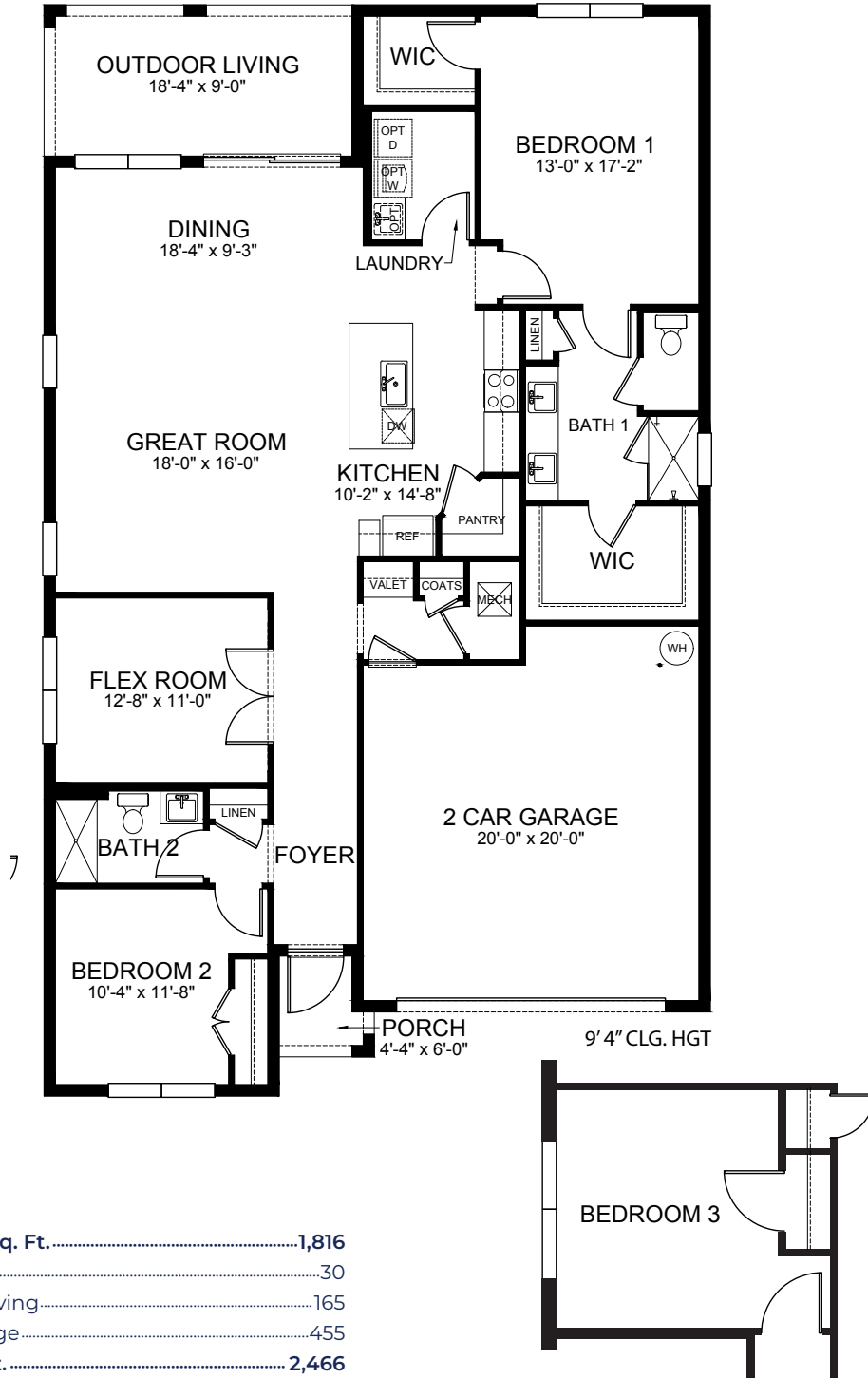
D.R. Horton is equal housing opportunity builder. Home and community information, including pricing, included features, terms, availability and amenities, are subject to change and prior sale at any time without notice or obligation. Pictures, photographs, features, colors and sizes are approximate for illustration purposes only and will vary from the homes as built. Florida Certified General Contractor #CGC059394

AVON
3 Bedrooms, 2 Bathrooms, 2-Car Garage



Total A/C Sq. Ft.	1,641
Porch.....	25
Outdoor Living.....	240
2-Car Garage.....	448
Total Sq. Ft.	2,354

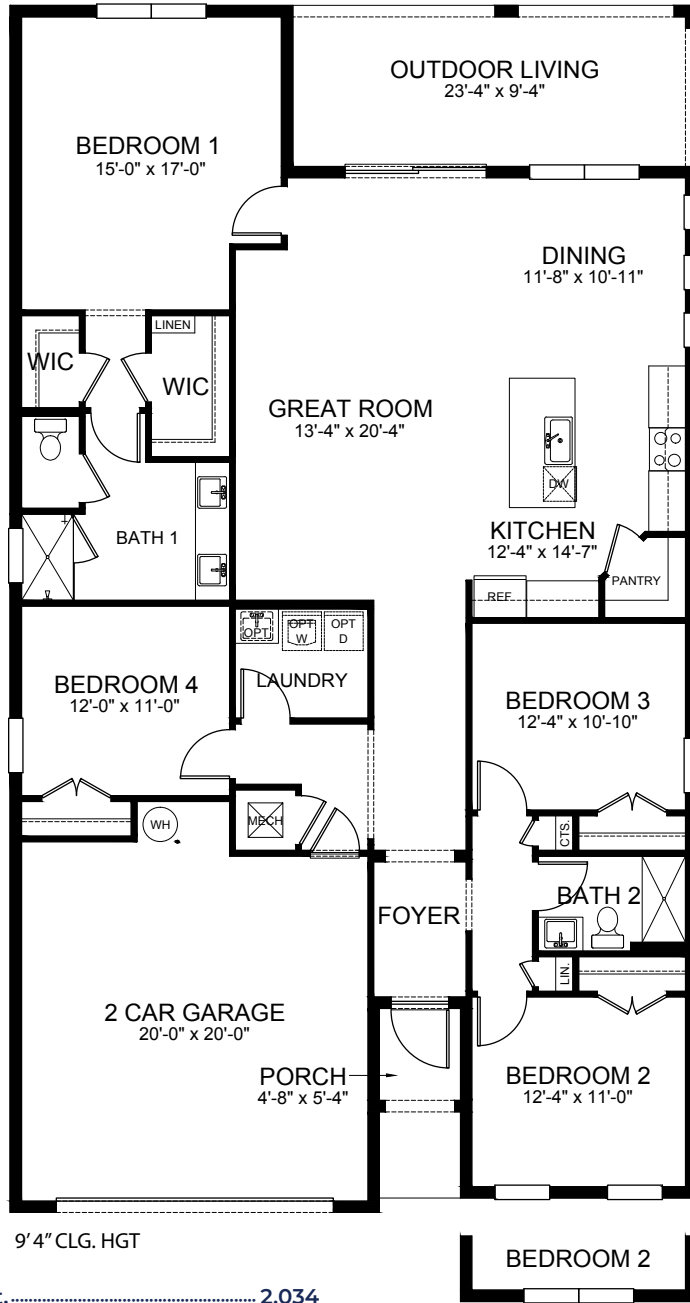
CLIFTON
2 Bedrooms, 2 Bathrooms, Flex Room, 2-Car Garage



Total A/C Sq. Ft.	1,816
Entry.....	30
Outdoor Living.....	165
2-Car Garage.....	455
Total Sq. Ft.	2,466

D.R. Horton is equal housing opportunity builder. Pictures, photographs, features, colors, drawings, floor plans, square footages and sizes are approximate for illustration purposes only and will vary from the homes as built. All drawings are the artist's concept. Florida Certified General Contractor #CGC059394

DELRAY
4 Bedrooms, 2 Bathrooms, 2-Car Garage



Total A/C Sq. Ft.	2,034
Porch.....	28
Outdoor Living.....	218
2-Car Garage.....	458
Total Sq. Ft.	2,738

Windows at Elevation 'B'

D.R. Horton is equal housing opportunity builder. Pictures, photographs, features, colors, drawings, floor plans, square footages and sizes are approximate for illustration purposes only and will vary from the homes as built. All drawings are the artist's concept. Florida Certified General Contractor #CGC059394

Jensen Village | Included Features

Architectural Artistry

- Architecturally designed exterior elevations with each floorplan
- Stone exterior accents (per plan)
- Reinforced concrete monolithic foundation slab
- Masonry exterior walls
- Professionally engineered roof with hurricane clips and bracing
- Baked in color through cement flat tile roof
- Durable metal garage door
- Therma-Tru® embossed insulated fiberglass 8' front door
- Low E impact resistant windows and doors
- Fully sodded homesites with professionally designed landscaping
- Hunter® automatic irrigation system
- Paver driveway, entry walkway and outdoor living area
- Gutters in front area of driveway and entry walkway
- Exterior weather-proof outlets (G.F.I.)

Heart of the Home

- Knockdown textured finish on walls and ceilings
- Jeld-Wen® 2-panel interior doors
- Kwikset® satin-nickel keyed entry handleset
- Kwikset® satin-nickel interior door levers throughout
- Vinyl-coated ventilated shelving in all closets
- Daltile® 18" x 18" ceramic tile flooring in living areas excluding bedrooms
- Mohawk® luxurious wall-to-wall carpeting (installed over dense padding)
- LED puck lights in living / great room
- Sherwin Williams® bright white interior paint
- Square style baseboards throughout

A Gourmet's Delight

- Whirlpool® Stainless Steel Appliances
 - 24 cu. ft. side by side refrigerator with ice maker
 - Glass top range with microwave above
 - Built-in dishwasher
- Quality-crafted, custom designed cabinets with 36" uppers
- Granite countertop with built up edge and 4" granite backsplash
- LED puck lights
- Sterling® single-bowl stainless steel undermount sink
- Moen® pull-out faucet

Thoughtful Details

- Uponor® PEX plumbing water lines
- Minimum 40-gallon insulated water heater (per plan)
- Interior washer/dryer hook-up
- Carrier® energy efficient central A/C and heating system
- R-30 blown insulation above all air-conditioned living space
- R-11 BATT insulation between interior wall and garage wall
- R-4.1 insulated exterior masonry walls

Bathroom Conveniences

- Adult-height custom designed cabinets
- Cultured marble vanity countertops
- Full vanity mirrors
- Daltile® 12" x 12" ceramic tile floors
- Daltile® 12" x 12" ceramic tile shower walls
- Moen® faucets throughout
- Frame glass shower enclosure (per plan)
- Gerber® ErgoHeight elongated commodes throughout
- Air King® exhaust fans

Technology Standard Features

- Square D® surge protection on all major appliances
- Pre-wired for ceiling fans with switches in all bedrooms and great room
- High-speed structured wiring for 4-line phone, video and computer, includes Cat-5 data lines and RG-6 quad shield coaxial cable (per plan)
- BRK® electrical smoke detectors with battery-backup
- BRK® carbon monoxide detector
- Cooper® switches and outlets throughout
- Minimum 150-amp electrical panel with circuit breakers

Home Is® Connected

- Qolysys IQ Panel II 7" HD Touchscreen with built-in 5MP camera
- Skybell® Trim Plus WiFi video doorbell
- Echo Dot™ speaker with Alexa
- Z Wave™ Thermostat
- Z Wave™ Light Switch
- Z Wave™ Door Lock
- WiFi enabled garage door opener with two transmitters
- Security System with 1 motion detector and 3 door contacts

D.R. Horton's Personal Touch

- Personalized New Homeowner Orientation
- D.R. Horton 1-Year Warranty
- 10-Year RWC™ warranty to protect your investment
- 10-Year Carrier® limited warranty
- 3rd party home inspections

D.R. Horton is equal housing opportunity builder. Included features subject to change without prior notice or obligation, as a result, please consult with one of our sales representatives for the latest community information. This map is a schematic for exhibition purposes only and does not represent the exact location or configuration of site features, lot lines, easements, amenities, units, buildings or details shown thereon. All homesite sizes are approximate and may vary. All information on this map, including availability and delivery dates is subject to change without notice or obligation. Florida Certified General Contractor #CGC059394

