

SINGLE-FAMILY HOMES



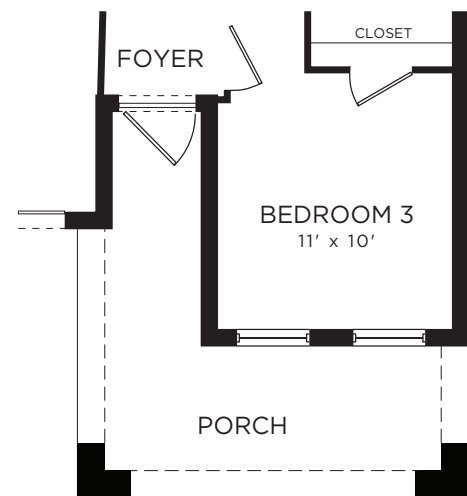
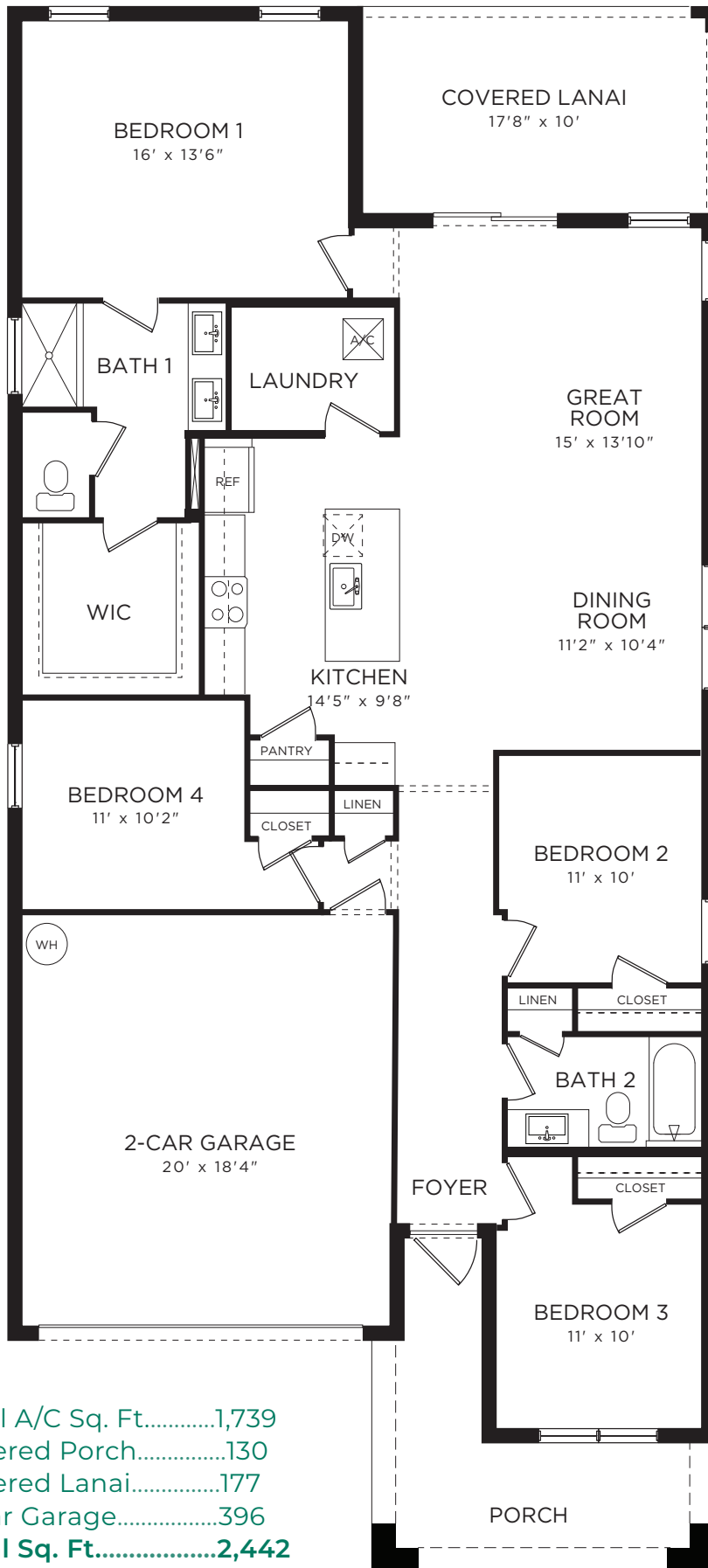
The Hammocks • 3859 SE Lee Street, Stuart, FL 34997 • (877) 949.3066

D.R. Horton is equal housing opportunity builder. Home and community information, including pricing, included features, terms, availability and amenities, are subject to change and prior sale at any time without notice or obligation. Pictures, photographs, features, colors and sizes are approximate for illustration purposes only and will vary from the homes as built. Florida Certified General Contractor #CGC059394



THE MERRIT

4 Bedrooms
2 Bathrooms
2-Car Garage



ELEVATION F

Total A/C Sq. Ft.....1,739
 Covered Porch.....130
 Covered Lanai.....177
 2-Car Garage.....396
Total Sq. Ft.....2,442

The Hammocks | Included Features

ARCHITECTURAL ARTISTRY

- Reinforced concrete monolithic foundation slab
- Masonary exterior walls
- Professionally engineered roof with hurricane clips and bracing
- Two architecturally designed exterior elevations available
- Designer exterior color schemes
- Durable metal garage door
- Impact resistant windows
- Therma-Tru® embossed insulated fiberglass front door
- Paver driveway, entry walkway and patio
- IKO Dimensional roof shingles with 30-year manufacturer's warranty
- Exterior hose bib connection
- Exterior weather proof outlets (G.F.I.) in front and rear
- Fully sodded homesites with professionally designed landscaping
- Hunter® automatic irrigation system

HEART OF THE HOME

- Knockdown textured finish on walls and ceilings
- Jeld-Wen® 2-panel interior doors
- Kwikset® satin-nickel keyed entry handleset
- Kwikset® satin-nickel interior door levers throughout
- Vinyl-coated ventilated shelving in all closets
- Daltile® 18" x 18" ceramic tile flooring in all living areas
- Mohawk® luxurious wall-to-wall carpeting (installed over dense padding)
- Sherwin Williams® bright white interior paint
- Maxim® designer lighting fixtures (per plan)
- Square style baseboards throughout

A GOURMET'S DELIGHT

- Whirlpool® stainless steel appliances to include:
 - Range oven with microwave above
 - 25 cu. ft. side by side refrigerator
 - Dishwasher
- Moen® garbage disposal
- Icemaker line with shut-off valve
- Sterling® single-bowl stainless steel kitchen sink
- Quality crafted custom designed wood cabinets

THOUGHTFUL DETAILS

- Uponor® PEX plumbing water lines
- Minimum 50 gallon insulated water heater
- Interior washer/dryer hook-up
- Copper wiring in the interior of the home
- Carrier® energy efficient central A/C and heating system
- Fi Foil insulated exterior masonry walls

- R-30 blown insulation above all air-conditioned living space
- R-13 insulation between interior wall and garage wall

BATHROOM CONVENIENCES

- 12" x 12" ceramic tile floors in all baths
- 12" x 12" tile walls in all baths
- Adult height custom designed wood cabinets in all baths
- Double vanity sink in master
- Full vanity mirrors
- Gerber® elongated commodes throughout
- Moen® faucets throughout
- Air King® exhaust fans

TECHNOLOGY STANDARD FEATURES

- Square D® surge protection on all major appliances
- Pre-wired for ceiling fans with switches in all bedrooms and great room
- High speed structured wiring for 4-line phone, video and computer, Includes Cat-5 data lines and RG-6 quad shield coaxial cable (per plan)
- BRK® electrical smoke detectors with battery back-up
- BRK® carbon monoxide detector
- Cooper® switches and outlets throughout
- Minimum 150-amp electrical panel with circuit breakers

HOME IS® CONNECTED

- Qolysys IQ Panel II 7" HD Touchscreen with built-in 5MP camera
- Skybell® Trim Plus WiFi video doorbell
- Echo Dot™ speaker with Alexa
- Z Wave™ Thermostat
- Z Wave™ Light Switch
- Z Wave™ Door Lock
- WiFi enabled garage door opener with two transmitters
- Security System with 1 motion detector and 3 door contacts

D.R. HORTON'S PERSONAL TOUCH

- Personalized New Homeowner Orientation
- Express Homes 1-Year Warranty
- 10-Year RWC™ warranty to protect your investment
- 10-Year Carrier® limited warranty
- 3rd party home inspections
- No HOA



D.R. Horton is equal housing opportunity builder. Included features subject to change without prior notice or obligation, as a result, please consult with one of our sales representatives for the latest community information. This map is a schematic for exhibition purposes only and does not represent the exact location or configuration of site features, lot lines, easements, amenities, units, buildings or details shown thereon. All homesite sizes are approximate and may vary. All information on this map, including availability and delivery dates is subject to change without notice or obligation. Florida Certified General Contractor #CGC059394