



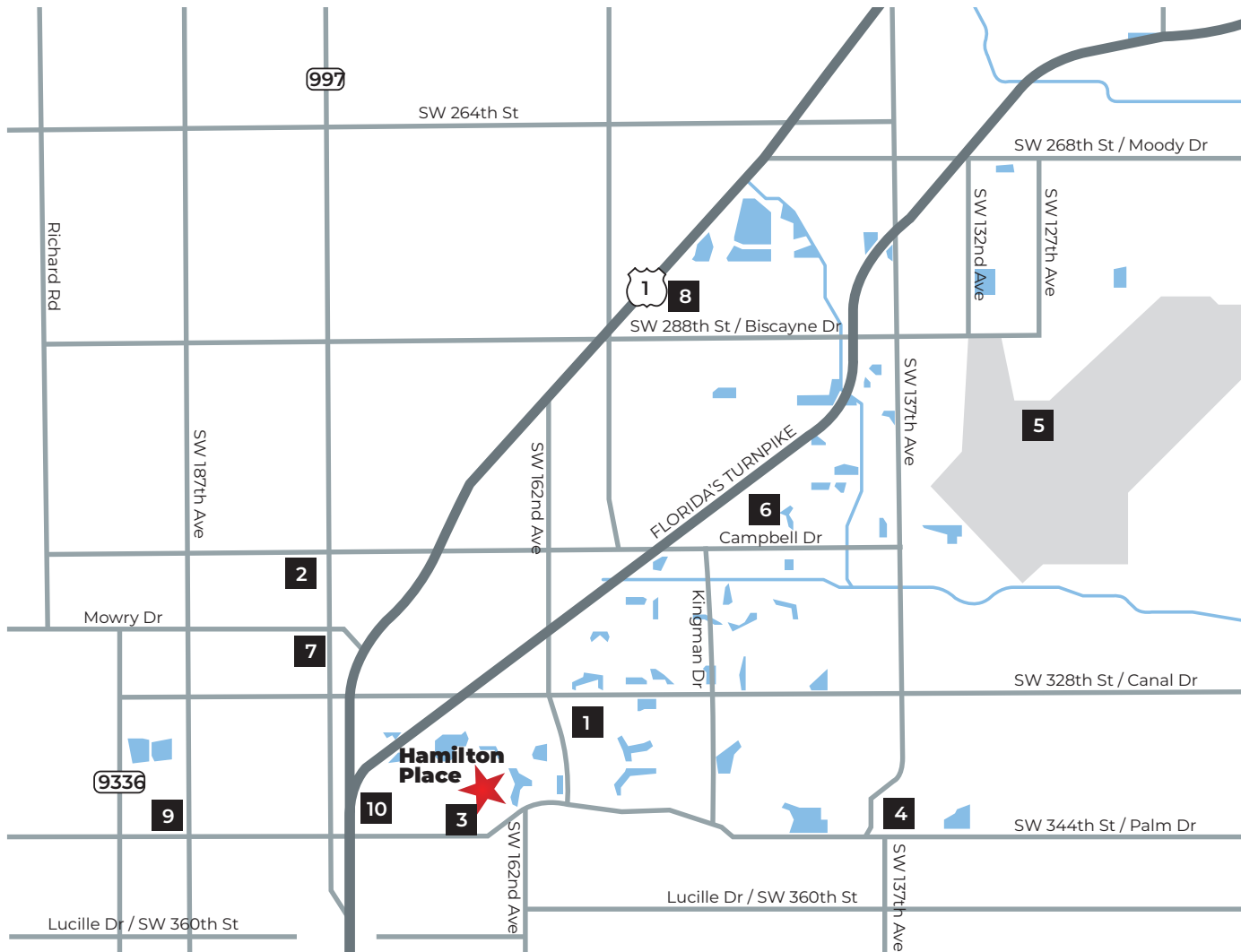
HAMILTON PLACE

TOWNHOMES
Homestead



HAMILTON PLACE

AMENITIES
Coming Spring 2022
Cabana | Swimming Pool | Playground



- 1. Gateway Environmental K-8 Learning Center
- 2. Homestead Middle School
- 3. Homestead Senior High
- 4. Homestead Miami Speedway
- 5. Homestead Air Reserve Base

- 6. Homestead Hospital
- 7. Homestead Station Shopping Mall
- 8. Coral Castle
- 9. Post Office
- 10. Florida Keys Outlet Marketplace



HAMILTON PLACE

NEIGHBORHOOD Map



Express
HOMES
A D.R. Horton Company

HAMILTON PLACE

INCLUDED
Features

Architectural Artistry

- Reinforced concrete monolithic foundation slab
- Masonry exterior walls
- Professionally engineered roof with hurricane clips and bracing
- IKO dimensional roof shingles with 30-year manufacturer's warranty
- Architecturally designed exterior elevations available
- Fully sodded homesites with professionally designed landscaping
- Gutters in front area of driveway, entry walkway
- Hunter® automatic irrigation system
- Paver driveway, entry walkway, and patio
- Durable metal garage door
- Therma Tru® embossed insulated fiberglass front door
- Hurricane storm panels
- Exterior weather proof outlets (G.F.I.)
- Exterior hose bib connection

Heart of the Home

- Knockdown textured finish on walls and ceilings
- Jeld-Wen® 2-panel interior doors
- Maxim® light fixtures
- Kwikset® satin nickel keyed entry handleset
- Kwikset® satin nickel interior door levers throughout
- Vinyl-coated ventilated shelving in all closets
- Daltile® 18" x 18" ceramic tile flooring in all first floor living areas (excluding bedrooms)
- Mohawk® luxurious wall-to-wall carpeting (installed over dense padding)
- Sherwin Williams® bright white interior paint
- Square style baseboards throughout

A Gourmet's Delight

- Whirlpool® stainless steel appliances:
 - 25 cu. ft. side x side refrigerator with ice maker
 - Range oven with microwave above
 - Built-in dishwasher
- Moen® single lever faucet
- Moen® garbage disposal
- Sterling single bowl stainless steel sink in kitchen
- Quality crafted custom designed cabinets with 30" uppers

Thoughtful Details

- Uponor PEX® plumbing water lines
- Minimum 50 gallon insulated water heater (per plan)
- Interior washer/dryer hook-up
- R-30 blown insulation above all air-conditioned living space
- R-11 BATT insulation between interior wall and garage wall
- R-4.1 insulated exterior masonry walls
- Carrier® energy efficient central A/C and heating system

Bathroom Conveniences

- Adult-height custom designed cabinets
- Full vanity mirrors
- Daltile® 12" x 12" ceramic tile floors & shower walls
- Gerber® elongated commodes throughout
- Gerber® pedestal sink in powder room (per plan)
- Moen® bathroom faucets throughout
- Air King® exhaust fans

Technology Standard Features

- Square D® surge protection on all major appliances
- Pre-wired for ceiling fans with switches in all bedrooms and great room
- High speed structured wiring for 4-line phone, video and computer Includes CAT-5 data lines and RG-6 quad shield coaxial cable (per plan)
- BRK® electrical smoke detectors with battery back-up
- BRK® carbon monoxide detector
- Deako® switches and Cooper® outlets throughout
- Minimum 150-amp electrical panel with circuit breakers

Home Is® Connected

- Qolysys IQ Panel II 7" HD Touchscreen with built-in 5MP camera
- Skybell® Trim Plus WiFi video doorbell
- Echo Dot™ speaker with Alexa
- Z Wave™ Thermostat
- Z Wave™ Light Switch
- Z Wave™ Door Lock
- WiFi enabled garage door opener with two transmitters
- Security System w/ 1 motion detector and 3 door contacts

D.R. Horton's Personal Touch

- Personalized New Homeowner Orientation
- D.R. Horton 1-Year Warranty
- 10-Year RWCTM warranty to protect your investment
- 10-Year Carrier® limited warranty
- 3rd party home inspections

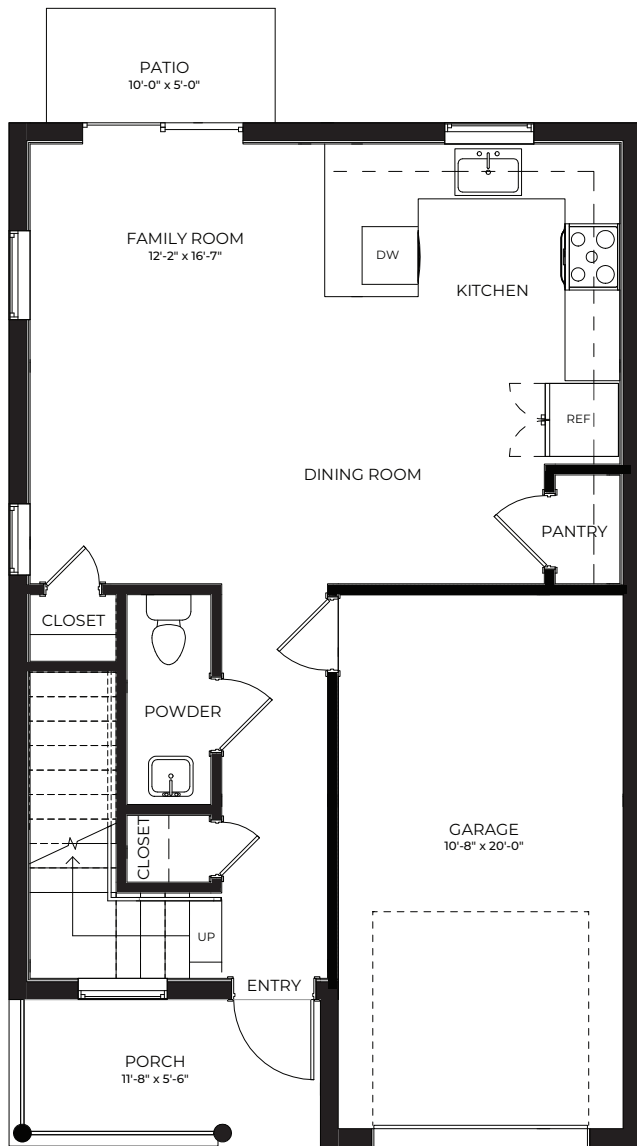


HAMILTON PLACE

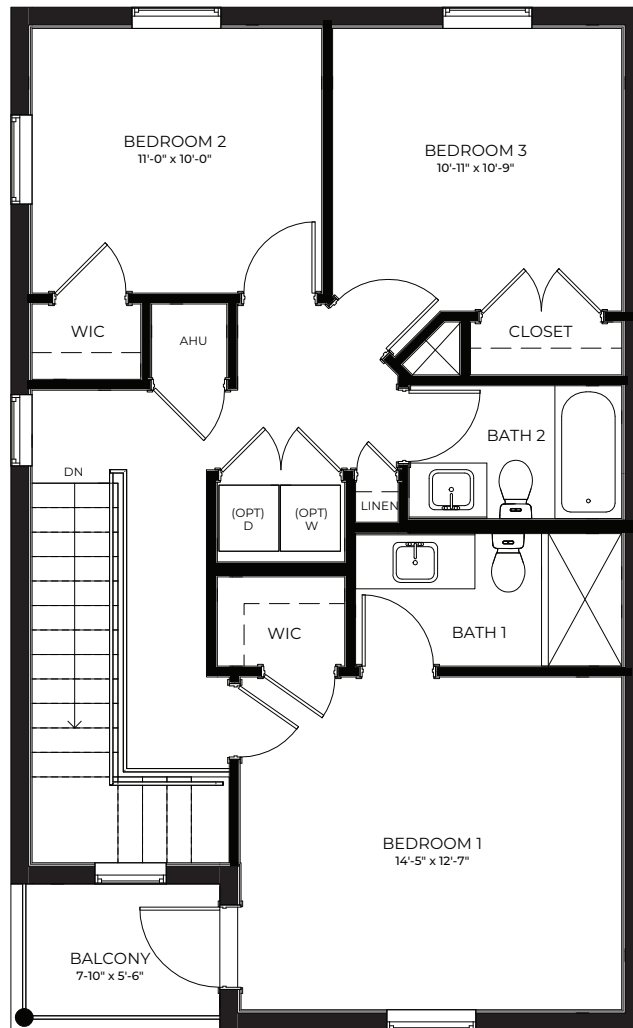


HAMILTON PLACE

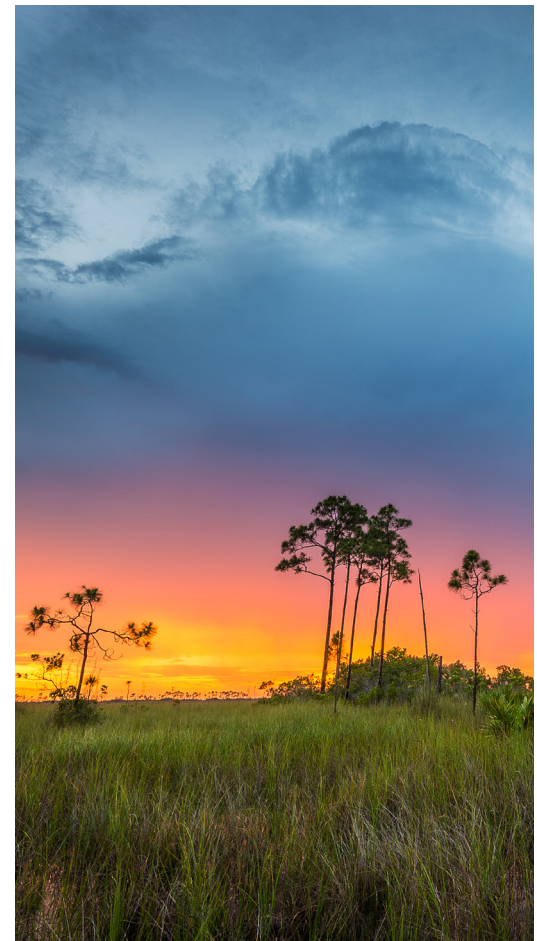
FLOORPLANS



FIRST FLOOR



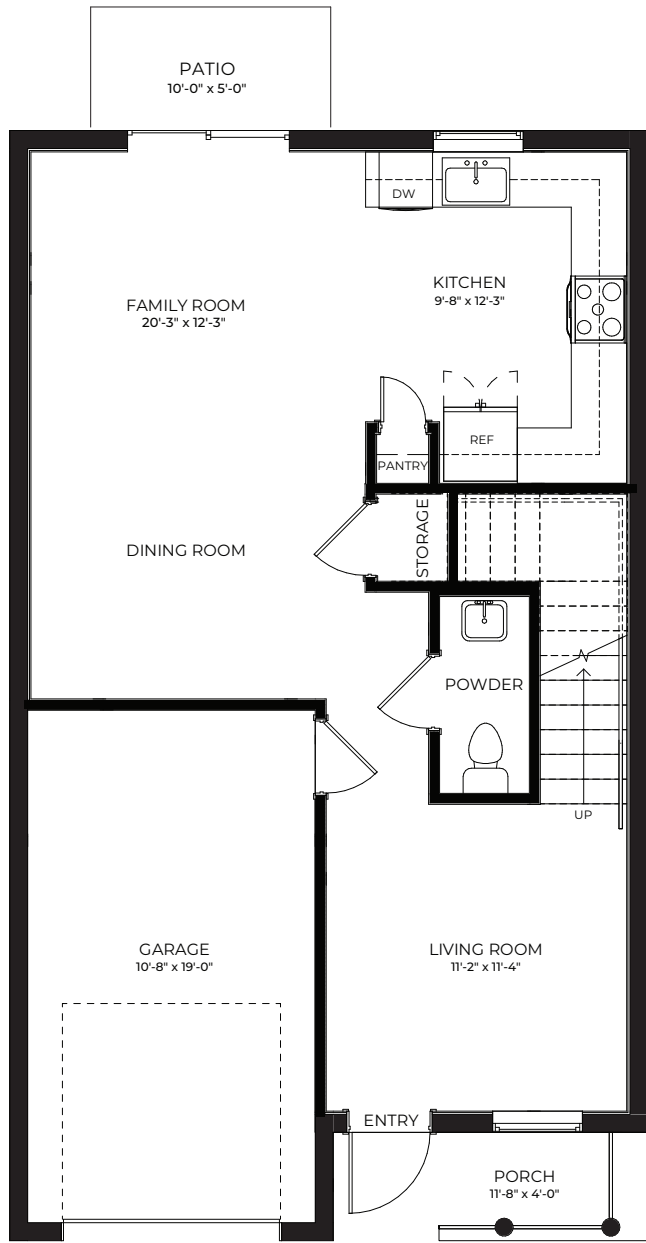
SECOND FLOOR



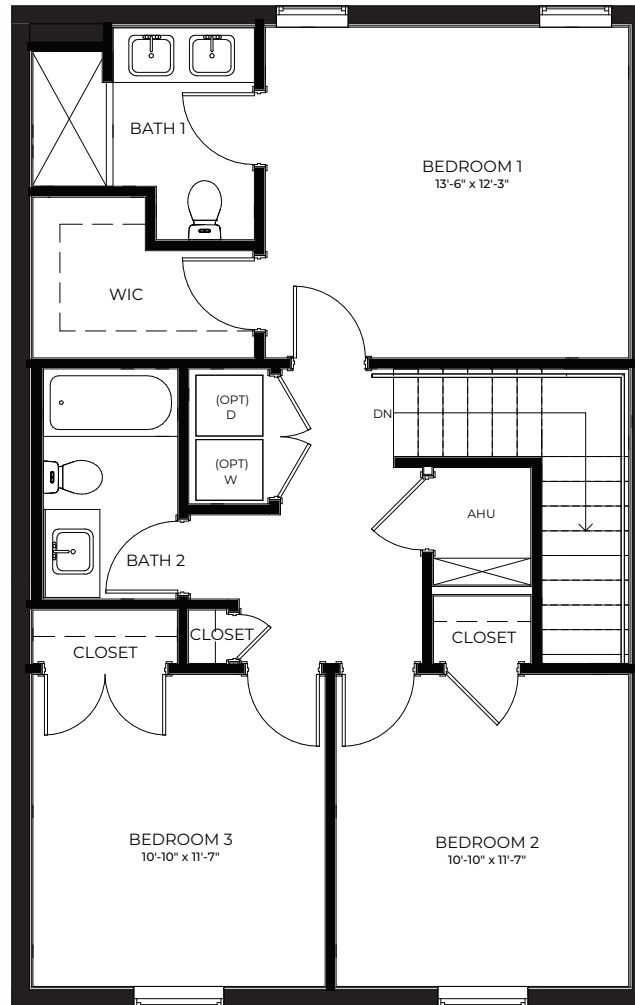
CRANE

3 Bedrooms
2.5 Bathrooms
1-Car Garage

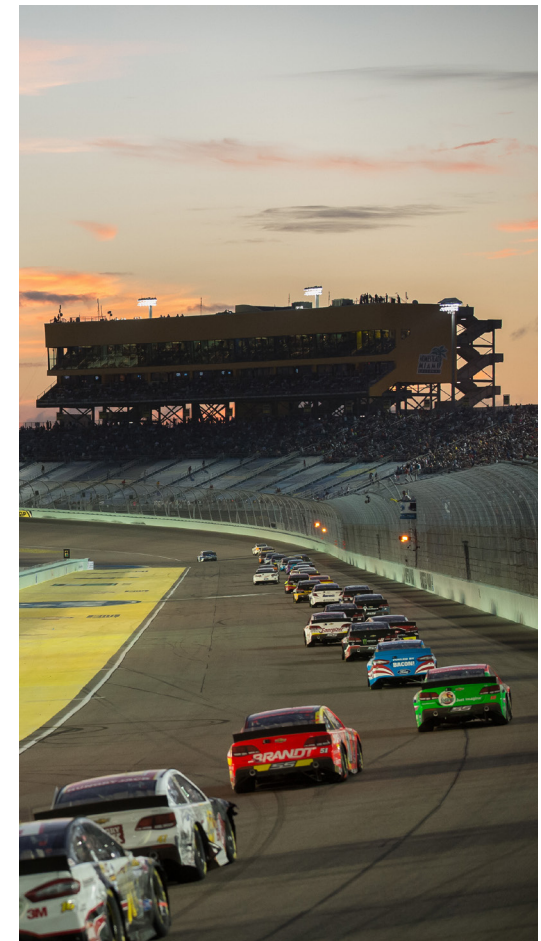
1st Floor A/C Sq. Ft.....	602
2nd Floor A/C Sq. Ft.....	836
Total A/C Sq. Ft.....	1,438
Porch.....	38
Patio.....	50
Balcony.....	42
Garage.....	225
Total Sq. Ft.	1,793



FIRST FLOOR



SECOND FLOOR



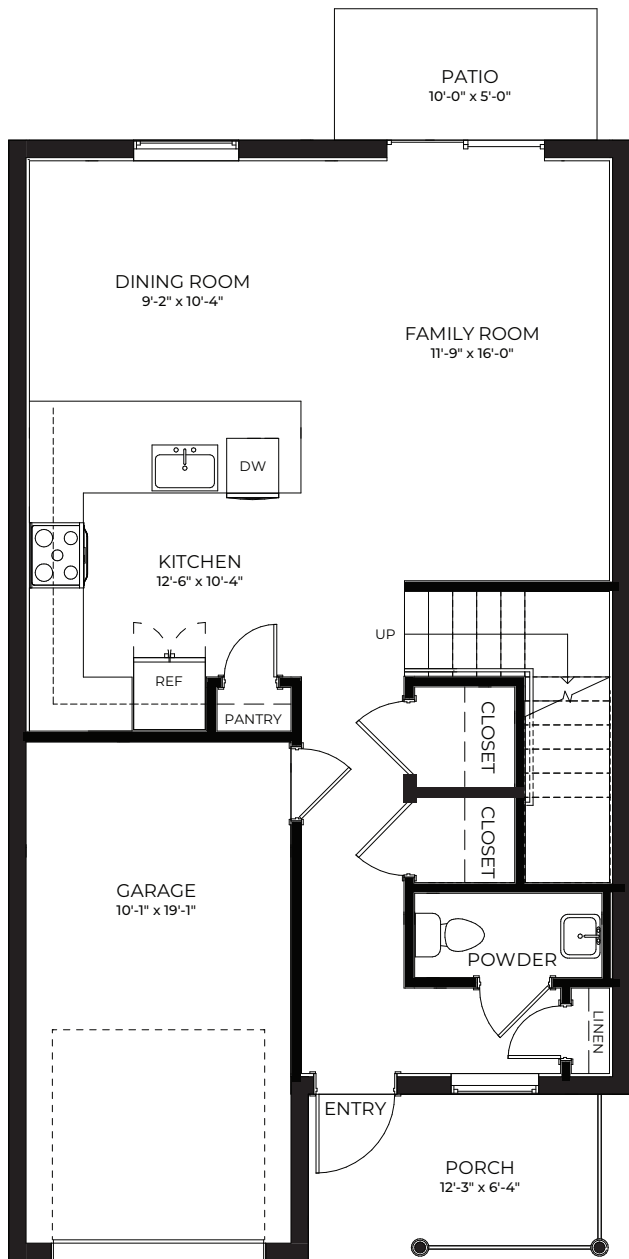
FALCON

3 Bedrooms
 2.5 Bathrooms
 1-Car Garage

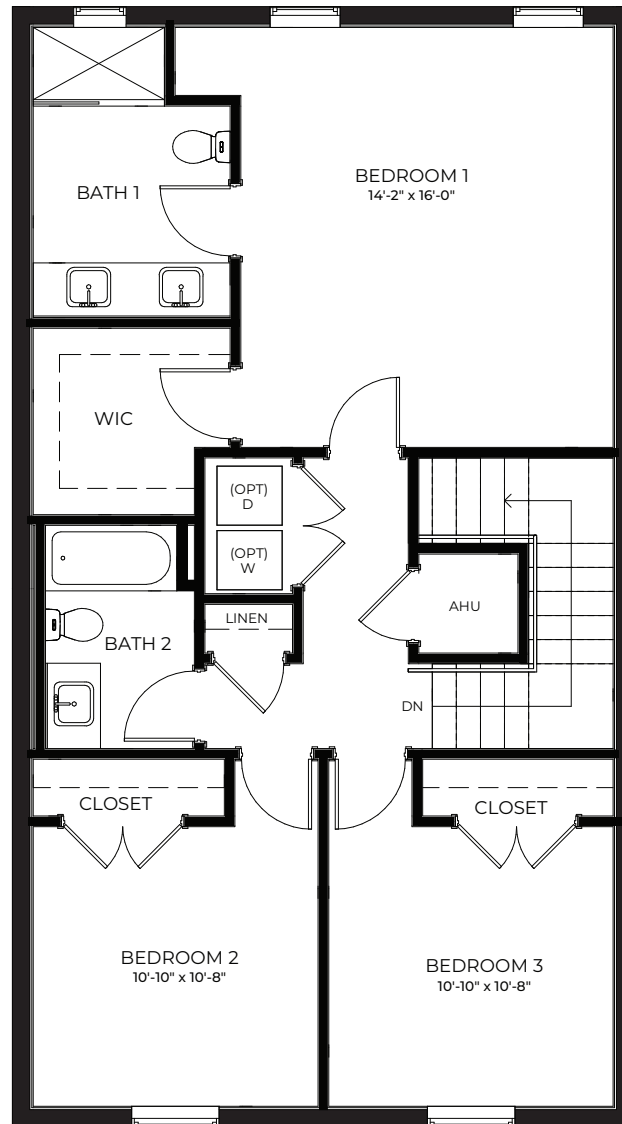
1st Floor A/C Sq. Ft.....	661
2nd Floor A/C Sq. Ft.....	828
Total A/C Sq. Ft.....	1,489
Porch.....	45
Patio.....	50
Garage.....	215
Total Sq. Ft.	1,799



HAMILTON PLACE



FIRST FLOOR



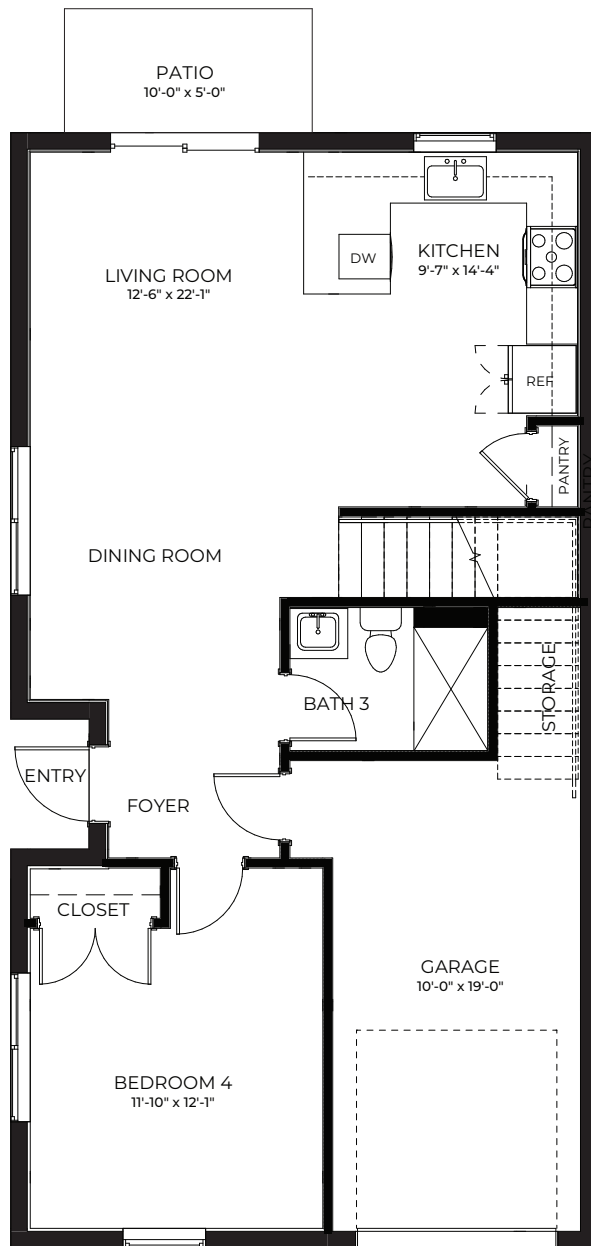
SECOND FLOOR



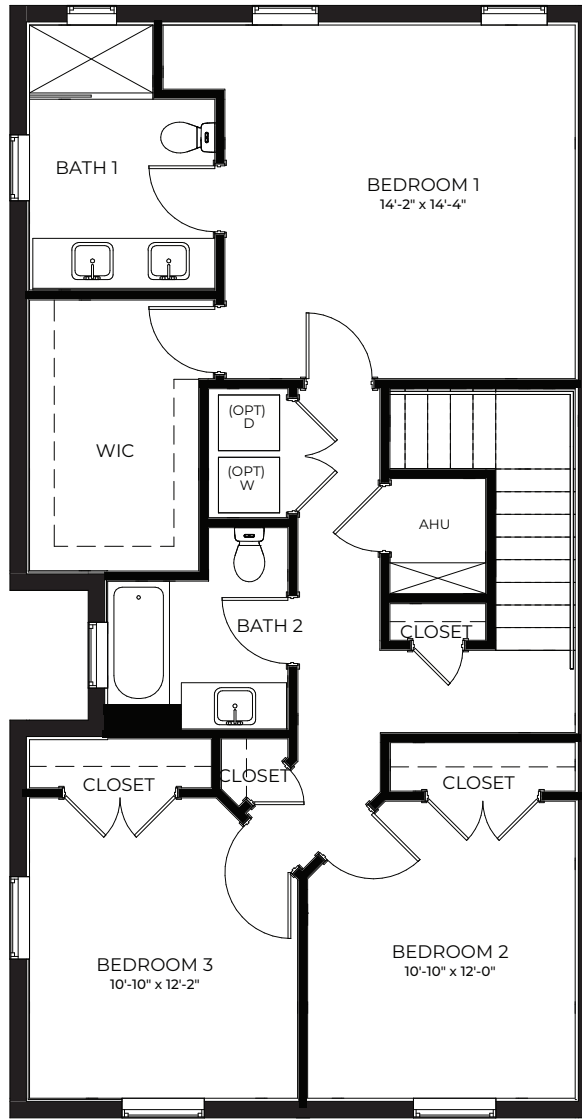
SPARROW

3 Bedrooms
2.5 Bathrooms
1-Car Garage

1st Floor A/C Sq. Ft.....	701
2nd Floor A/C Sq. Ft.....	981
Total A/C Sq. Ft.....	1,682
Porch.....	75
Patio.....	50
Garage.....	205
Total Sq. Ft.	2,012



FIRST FLOOR



SECOND FLOOR



TOUCAN

4 Bedrooms
3 Bathrooms
1-Car Garage

1st Floor A/C Sq. Ft.....	802
2nd Floor A/C Sq. Ft.....	1,002
Total A/C Sq. Ft.....	1,804
Entry.....	17
Patio.....	50
Garage.....	205
Total Sq. Ft.	2,076



COMMUNITY Siteplan

855.647.4247 • drhorton.com

1706 SE 9th Ave., Homestead, FL 33034

Selling from our Keys Pointe Sales Office:
380 NE 5th Place, Florida City, FL 33034



HAMILTON PLACE

D.R. Horton is equal housing opportunity builder. Home and community information, including pricing, included features, terms, availability and amenities, are subject to change and prior sale at any time without notice or obligation. Pictures, photographs, features, colors, drawings, floor plans, square footages and sizes are approximate for illustration purposes only and will vary from the homes as built. All drawings are the artist's concept. Buyer should conduct his or her own investigation of the present and future availability of school districts and school assignments. D.R. Horton has no control or responsibility for any changes to school districts or school assignments should they occur in the future. Home Is Connected, A smart home is a convenient home setup where appliances and devices can be automatically controlled remotely from any internet-connected place using a mobile or other networked device. Certified General Contractor License Number CGC05939