



**D·R·HORTON**<sup>®</sup>  
*America's Builder*

  
**CROSSWINDS**

SINGLE-FAMILY HOMES  
Homestead



# NEIGHBORHOOD Map

- 1. Campbell Drive K-8 Center
- 2. Air Base Elementary K-8
- 3. South Dade Senior High School 9-12
- 4. Homestead Miami Speedway
- 5. Homestead Air Reserve Base
- 6. Homestead Hospital
- 7. Homestead Station Shopping Mall
- 8. Coral Castle
- 9. Post Office
- 10. Florida Keys Outlet Marketplace



**D·R·HORTON**<sup>®</sup>  
*America's Builder*

  
**CROSSWINDS**

INCLUDED  
Features

### **Architectural Artistry**

- Reinforced concrete monolithic foundation slab
- Masonry exterior walls
- Professionally engineered roof with hurricane clips and bracing
- Baked in color through cement flat roof tiles
- Architecturally designed exterior elevations with each floor plan
- Fully sodded homesites with professionally designed landscaping
- Gutters in front area of driveway, entry walkway
- Hunter® automatic irrigation system
- Paver driveway, entry walkway, and lanai
- Durable metal garage door
- Therma Tru® embossed insulated fiberglass front door
- Impact resistant glass windows and sliding glass doors
- Exterior weather proof outlets (G.F.I.)
- Exterior hose bib connection

### **Heart of the Home**

- Knockdown textured finish on walls and ceilings
- Jeld-Wen® 2-panel interior doors
- Maxim® light fixtures
- Kwikset® satin nickel keyed entry handleset
- Kwikset® satin nickel interior door levers throughout
- Vinyl-coated ventilated shelving in all closets
- Daltile® 18" x 18" ceramic tile flooring throughout
- Mohawk® luxurious wall-to-wall carpeting (installed over dense padding)
- Sherwin Williams® bright white interior paint
- Square style baseboards throughout

### **A Gourmet's Delight**

- Whirlpool® stainless steel appliances:
  - 25 Cu. Ft. side x side refrigerator with ice maker
  - Glass top range with microwave above
  - Built-in dishwasher
- Moen® single lever faucet
- Moen® garbage disposal
- Sterling single bowl stainless steel sink
- Waterfall panels at bar top
- Quality crafted custom designed cabinets with 36" uppers
- Small crown molding above kitchen cabinets
- Granite countertop with built up edge
- Subway tile backsplash

### **Thoughtful Details**

- Uponor PEX® plumbing water lines
- Minimum 50 gallon insulated water heater (per plan)
- Interior washer/dryer hook-up
- R-30 blown insulation above all air-conditioned living space
- R-13 BATT insulation between interior wall and garage wall
- R-4.1 insulated exterior masonry walls
- Energy efficient central A/C and heating system

### **Bathroom Conveniences**

- Adult-height custom designed cabinets with cultured marble tops
- Daltile® 12" x 12" ceramic tile floors & shower walls
- Full vanity mirrors
- Frameless shower doors in all baths
- Sterling® soaking tub in bedroom one (per plan)
- Gerber® elongated commodes throughout
- Gerber® pedestal sink in powder room (per plan)
- Moen® bathroom faucets throughout
- Air King® exhaust fans

### **Technology Standard Features**

- Square D® surge protection on all major appliances
- Pre-wired for ceiling fans with switches in all bedrooms and great room
- High speed structured wiring for 4-line phone, video and computer Includes CAT-5 data lines and RG-6 quad shield coaxial cable (per plan)
- BRK® electrical smoke detectors with battery back-up
- BRK® carbon monoxide detector
- Deako® switches and Cooper® outlets throughout
- Minimum 150-amp electrical panel with circuit breakers

### **Home Is® Connected**

- Qolysys IQ Panel II 7" HD Touchscreen with built-in 5MP camera
- Skybell® Trim Plus WiFi video doorbell
- Echo Dot™ speaker with Alexa
- Z Wave™ Thermostat
- Z Wave™ Light Switch
- Z Wave™ Door Lock
- WiFi enabled garage door opener with three transmitters
- Security System w/ 1 motion detector and 3 door contacts

### **D.R. Horton's Personal Touch**

- Personalized New Homeowner Orientation
- D.R. Horton 1-Year Warranty
- 10-Year RWC™ warranty to protect your investment
- 10-Year Carrier® limited warranty
- 3rd party home inspections



**D·R·HORTON**<sup>®</sup>  
*America's Builder*

  
**CROSSWINDS**

FLOORPLANS



Homesite 1/1



Homesite 4/1

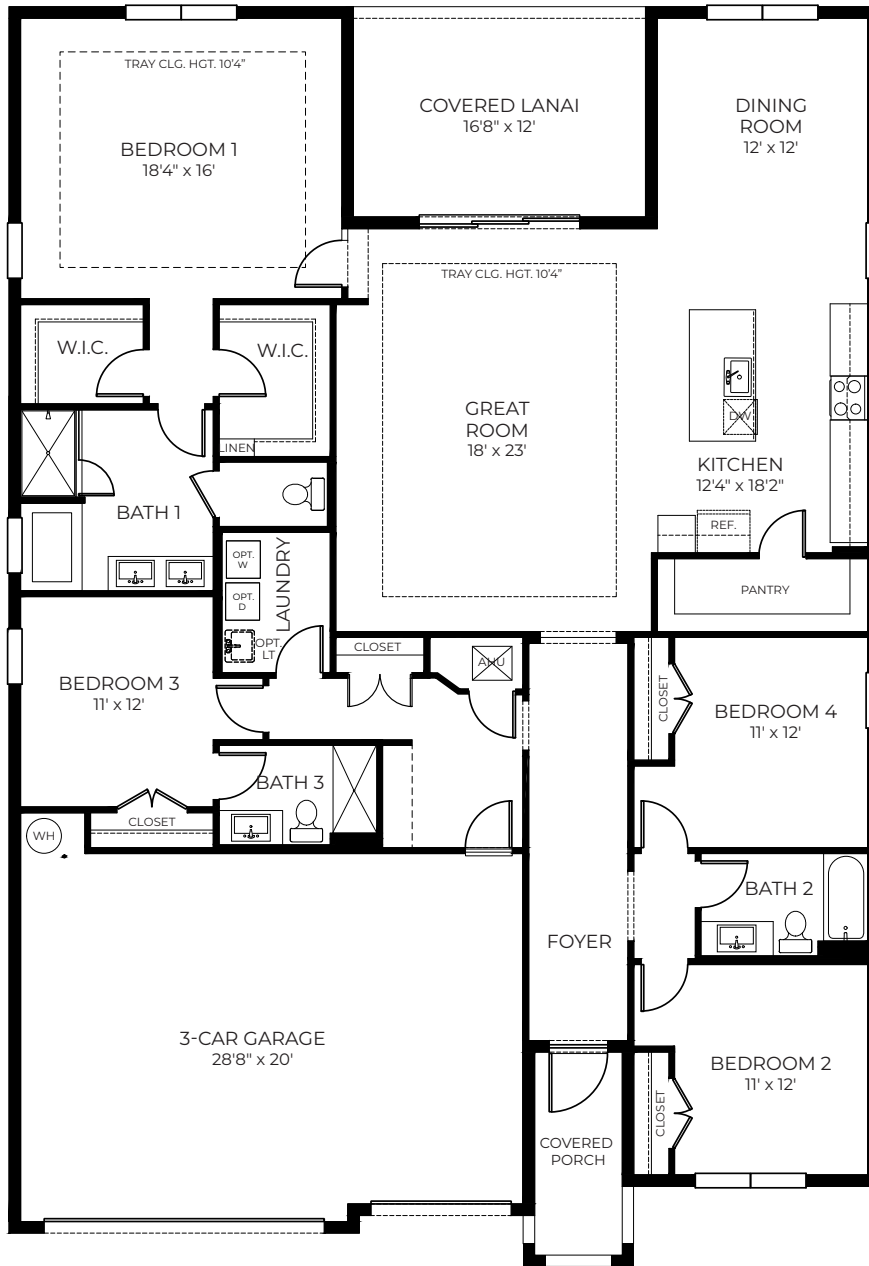
FRASER



Homesite 1/2



Homesite 4/2



# FRASER

4 Bedrooms  
3 Bathrooms  
3-Car Garage

Total A/C Sq. Ft.....	2,533
Covered Porch.....	60
Covered Lanai.....	200
3-Car Garage.....	643
<b>Total Sq. Ft.....</b>	<b>3,436</b>

**D·R·HORTON**<sup>®</sup>  
*America's Builder*

  
**CROSSWINDS**



Homesite 2/1

CAMDEN

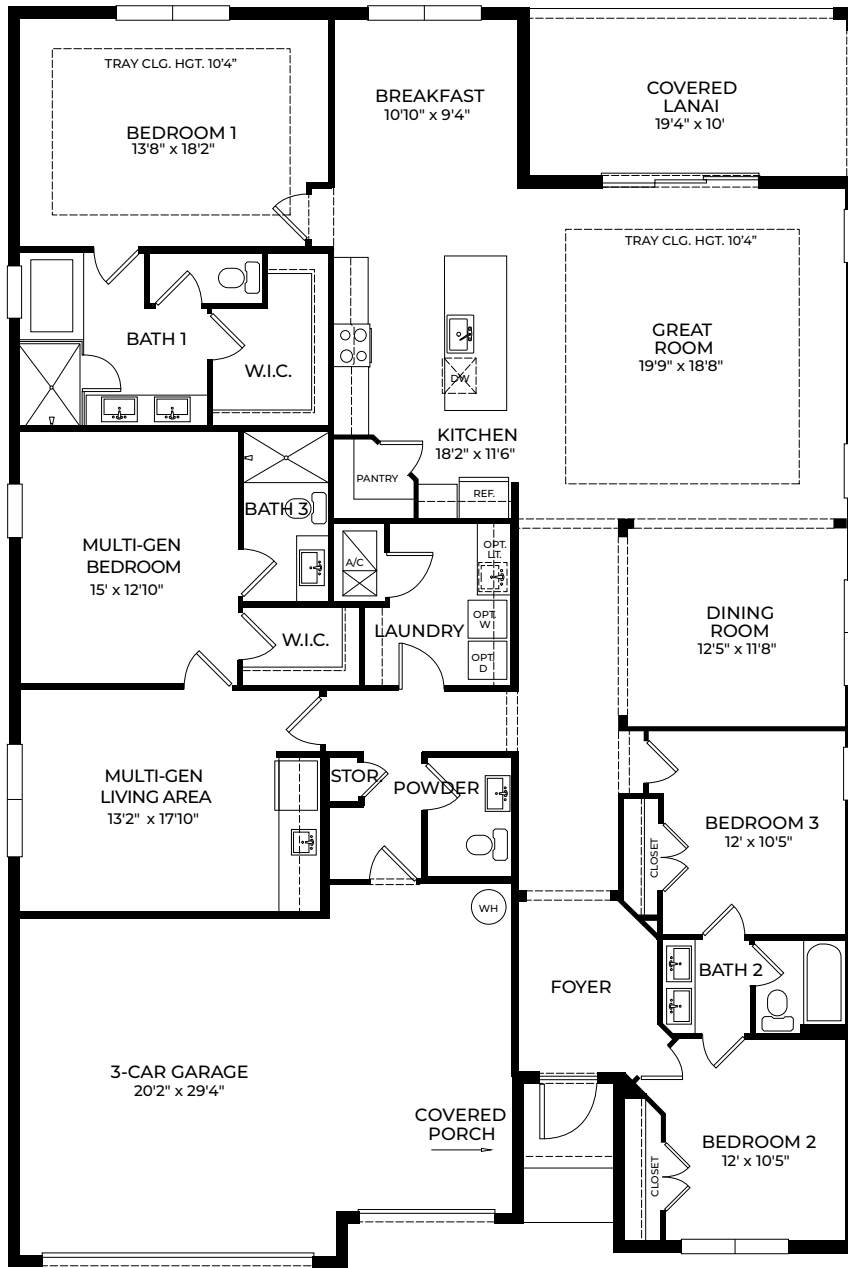


Homesite 5/1



Homesite 2/2





# CAMDEN

4 Bedrooms  
3.5 Bathrooms  
3-Car Garage

Total A/C Sq. Ft.	2,837
Covered Porch	27
Covered Lanai	193
3-Car Garage	619
<b>Total Sq. Ft.</b>	<b>3,676</b>





Homesite 3/1

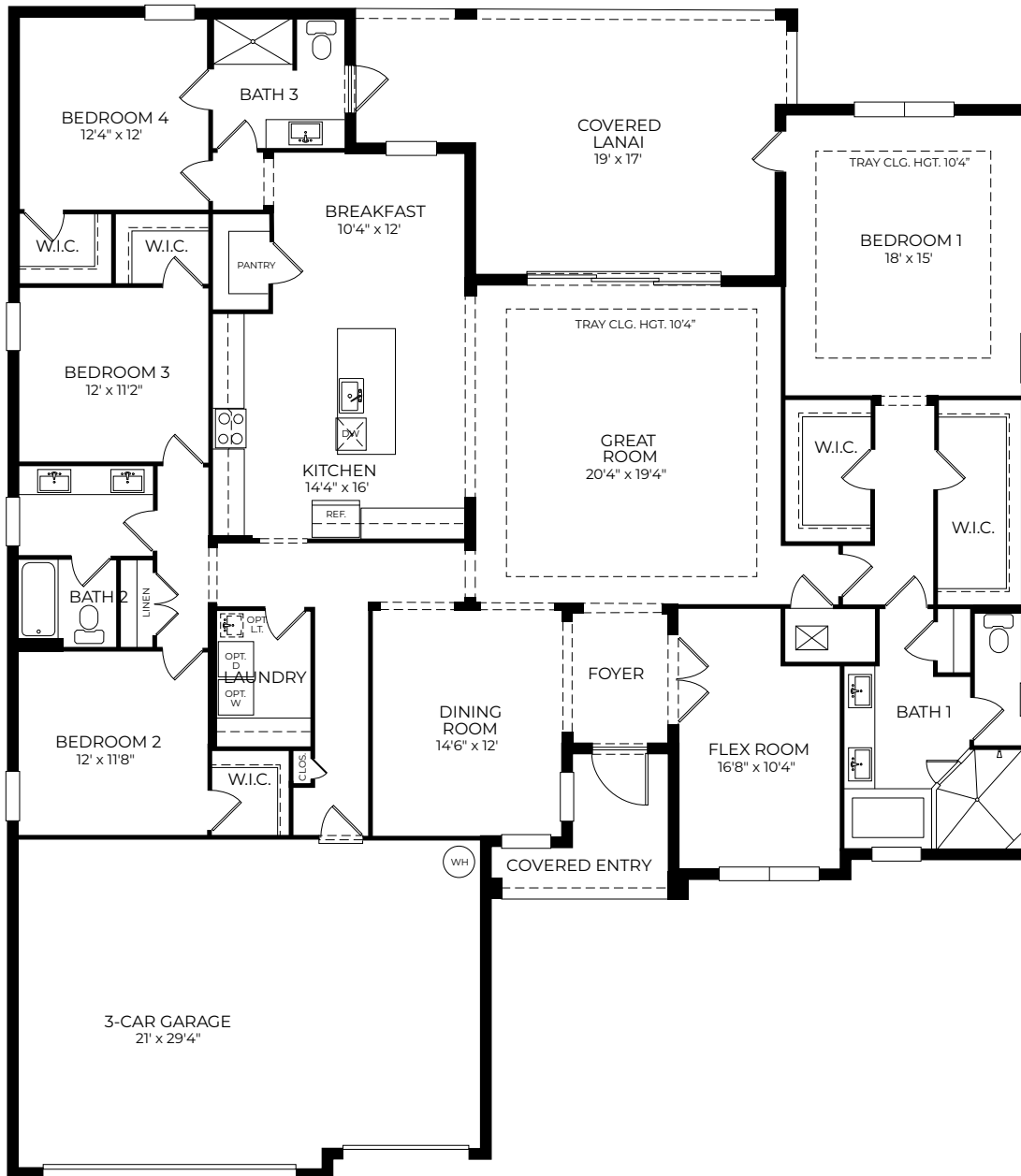
BELLISTER



Homesite 3/2



Homesite 5/2



## BELLISTER

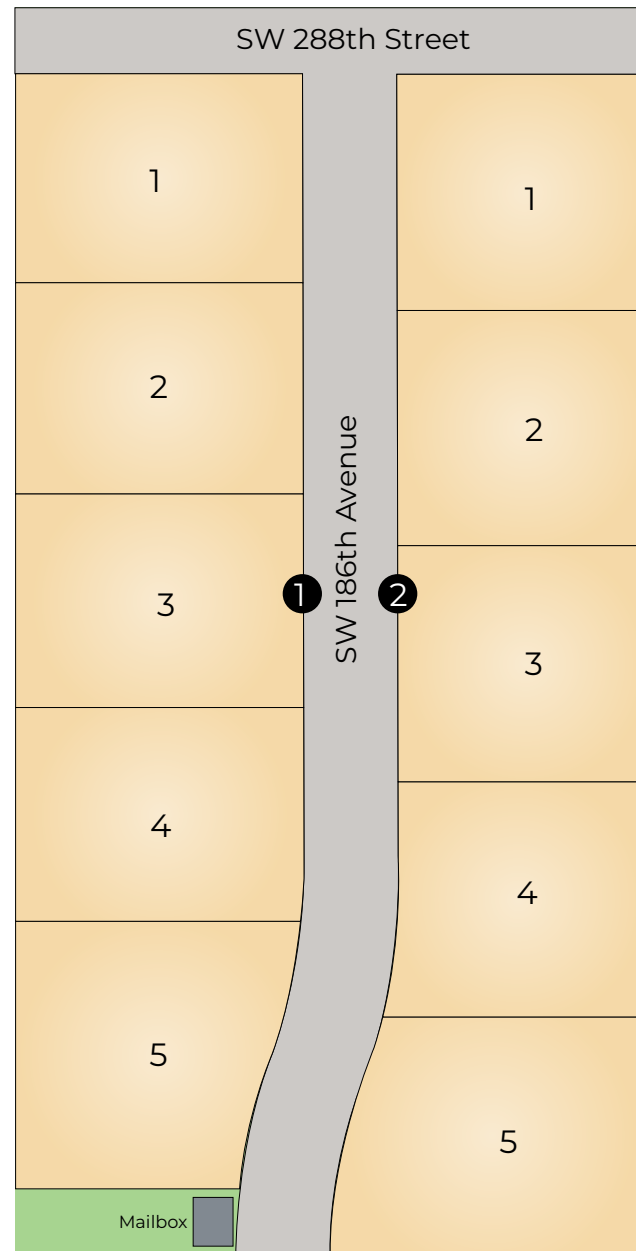
4 Bedrooms  
3 Bathrooms  
Flex Room  
3-Car Garage

<b>Total A/C Sq. Ft.</b> .....	<b>2,986</b>
Covered Porch.....	75
Covered Lanai.....	397
3-Car Garage.....	651
<b>Total Sq. Ft.</b> .....	<b>4,109</b>

**D·R·HORTON**  
*America's Builder*

**CROSSWINDS**

# COMMUNITY Siteplan



28808 SW 186th Ave., Homestead, FL 33030  
By Appointment Only  
855.647.4247 · drhorton.com

D.R. Horton is equal housing opportunity builder. Home and community information, including pricing, included features, terms, availability and amenities, are subject to change and prior sale at any time without notice or obligation. Pictures, photographs, features, colors, drawings, floor plans, square footages and sizes are approximate for illustration purposes only and will vary from the homes as built. All drawings are the artist's concept. Buyer should conduct his or her own investigation of the present and future availability of school districts and school assignments. D.R. Horton has no control or responsibility for any changes to school districts or school assignments should they occur in the future. Home Is Connected, A smart home is a convenient home setup where appliances and devices can be automatically controlled remotely from any internet-connected place using a mobile or other networked device. Certified General Contractor License Number CGC05939