

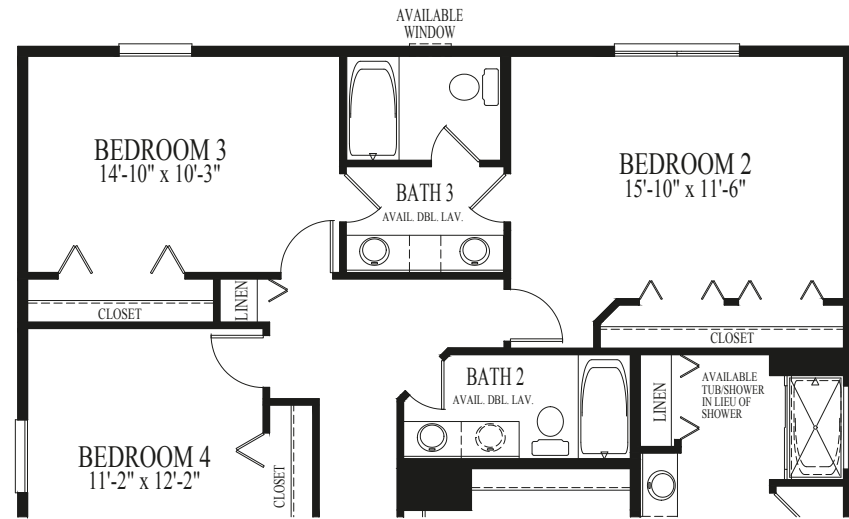
COME HOME TO STAY...

D·R·HORTON[®]
America's Builder

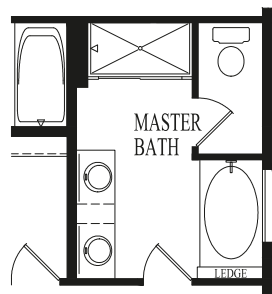
COME HOME TO STAY...

D·R·HORTON[®]
America's Builder

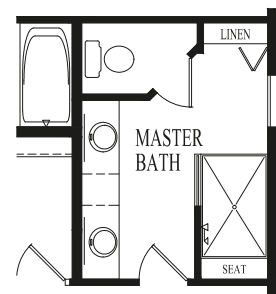
Amherst Options



Available Jack & Jill Bathrooms



Available Luxury Master Bath



Available Master Bath with Serenity Shower

Amherst at Windstone



Elevation A



Elevation Alt A



Elevation B



Elevation C



Elevation D

D.R. Horton's policy of continual attention to detail in design and construction requires that some revisions may be made by the architect or developer during the process of development. All dimensions and measurements are approximate. Floor plans are not to scale. Window sizes and locations vary with exterior design and specifications. Dimensions, features and specifications are subject to change without notice.

Illustrations and landscaping are an artist's conception and are not to scale. Actual elevations may vary. Please consult with your Sales Representative for current details. RESNET[®] EnergySmart Builder logo used with permission. For more information about RESNET, visit www.resnet.us. Applies to D.R. Horton Chicagoland homes built after March, 2010.

36996v2 - 4/17

RESNET EnergySmart
Builder
Every Home is a **HERS** Rated Home

D·R·HORTON[®]
America's Builder

847-984-4588 | drhorton.com/windstone
[facebook.com/drhortonchicago](https://www.facebook.com/drhortonchicago)



D·R·HORTON[®]
America's Builder

847-984-4588 | drhorton.com/windstone
[facebook.com/drhortonchicago](https://www.facebook.com/drhortonchicago)



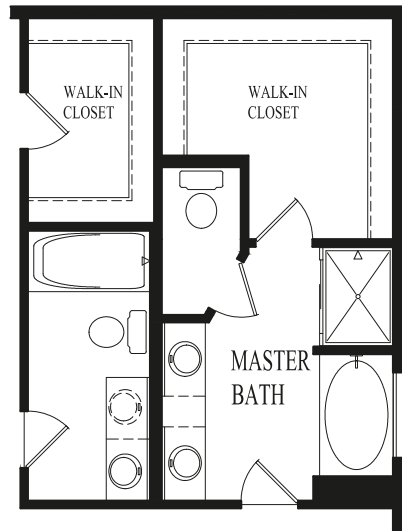
COME HOME TO STAY...



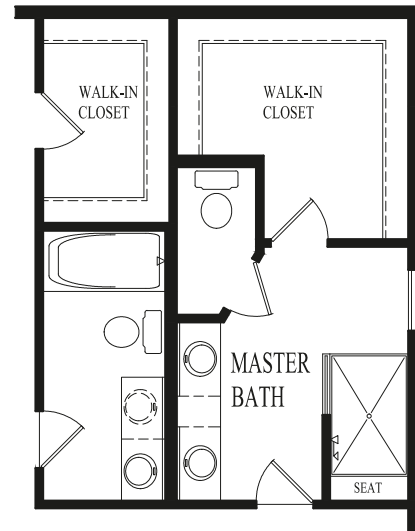
COME HOME TO STAY...



Danbury Options



Available Luxury Master Bath



Available Master Bath with Serenity Shower

Danbury at Windstone



Elevation A



Elevation Alt A



Elevation B



Elevation C



Elevation D

D.R. Horton's policy of continual attention to detail in design and construction requires that some revisions may be made by the architect or developer during the process of development. All dimensions and measurements are approximate. Floor plans are not to scale. Window sizes and locations vary with exterior design and specifications. Dimensions, features and specifications are subject to change without notice.

Illustrations and landscaping are an artist's conception and are not to scale. Actual elevations may vary. Please consult with your Sales Representative for current details. RESNET® EnergySmart Builder logo used with permission. For more information about RESNET, visit www.resnet.us. Applies to D.R. Horton Chicagoland homes built after March, 2010.

36996v2 - 4/17



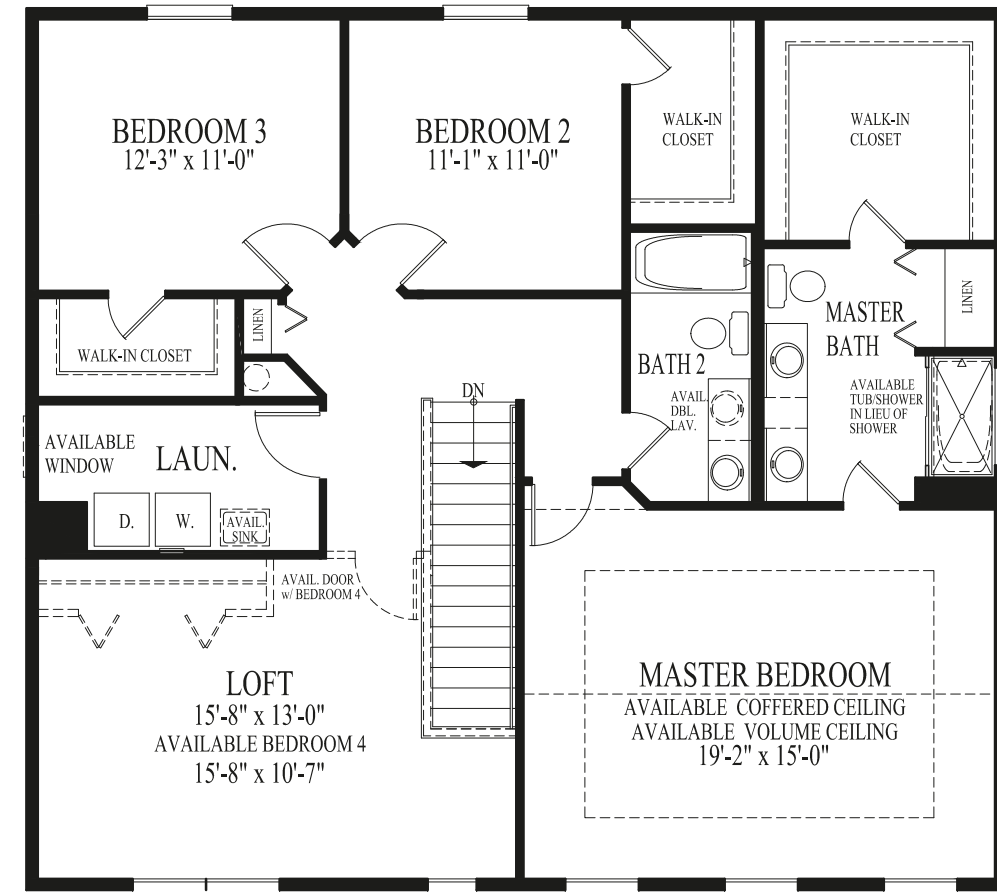
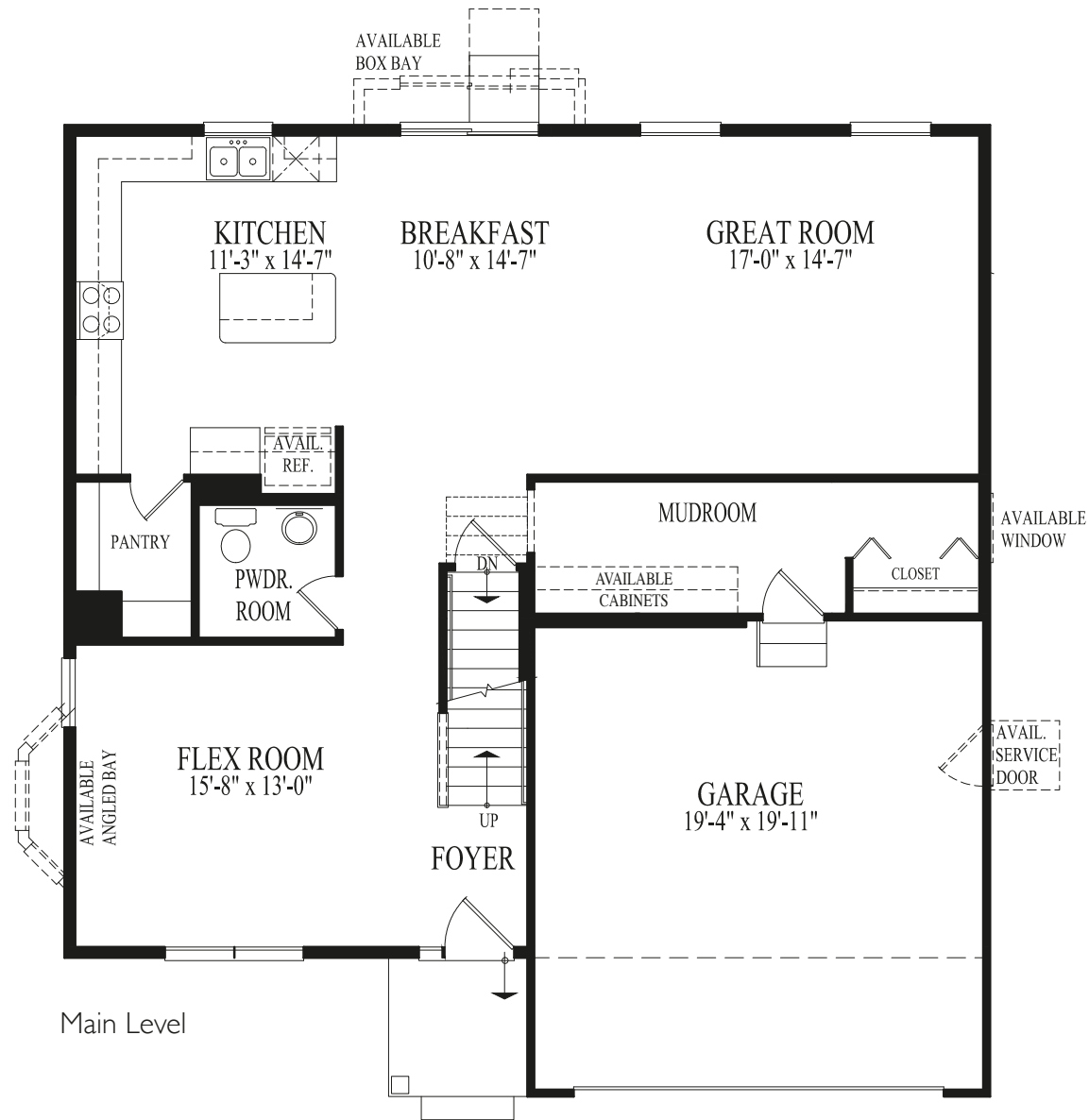
847-984-4588 | drhorton.com/windstone
facebook.com/drhortonchicago



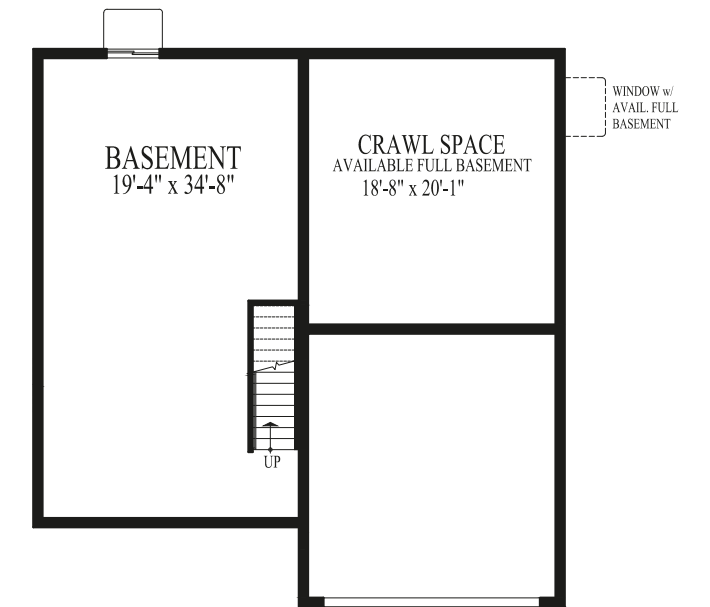
847-984-4588 | drhorton.com/windstone
facebook.com/drhortonchicago



Danbury at Windstone



Upper Level



Basement*

* Mechanical and window well locations may vary. See a sales representative for details.



COME HOME TO STAY...

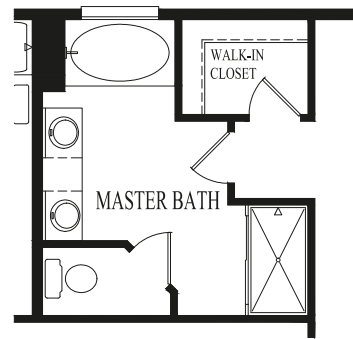


COME HOME TO STAY...

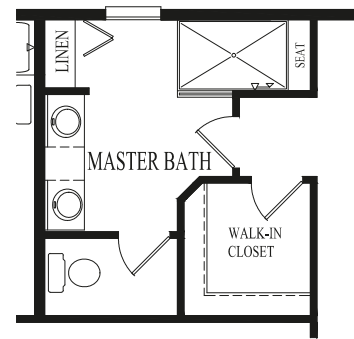


Stonecrest Options

Stonecrest at Windstone



Available Luxury Master Bath



Available Master Bath with Serenity Shower



Elevation A



Elevation Alt A



Elevation B



Elevation C



Elevation D

D.R. Horton's policy of continual attention to detail in design and construction requires that some revisions may be made by the architect or developer during the process of development. All dimensions and measurements are approximate. Floor plans are not to scale. Window sizes and locations vary with exterior design and specifications. Dimensions, features and specifications are subject to change without notice.

Illustrations and landscaping are an artist's conception and are not to scale. Actual elevations may vary. Please consult with your Sales Representative for current details. RESNET® EnergySmart Builder logo used with permission. For more information about RESNET, visit www.resnet.us. Applies to D.R. Horton Chicagoland homes built after March, 2010.

36996v2 - 4/17



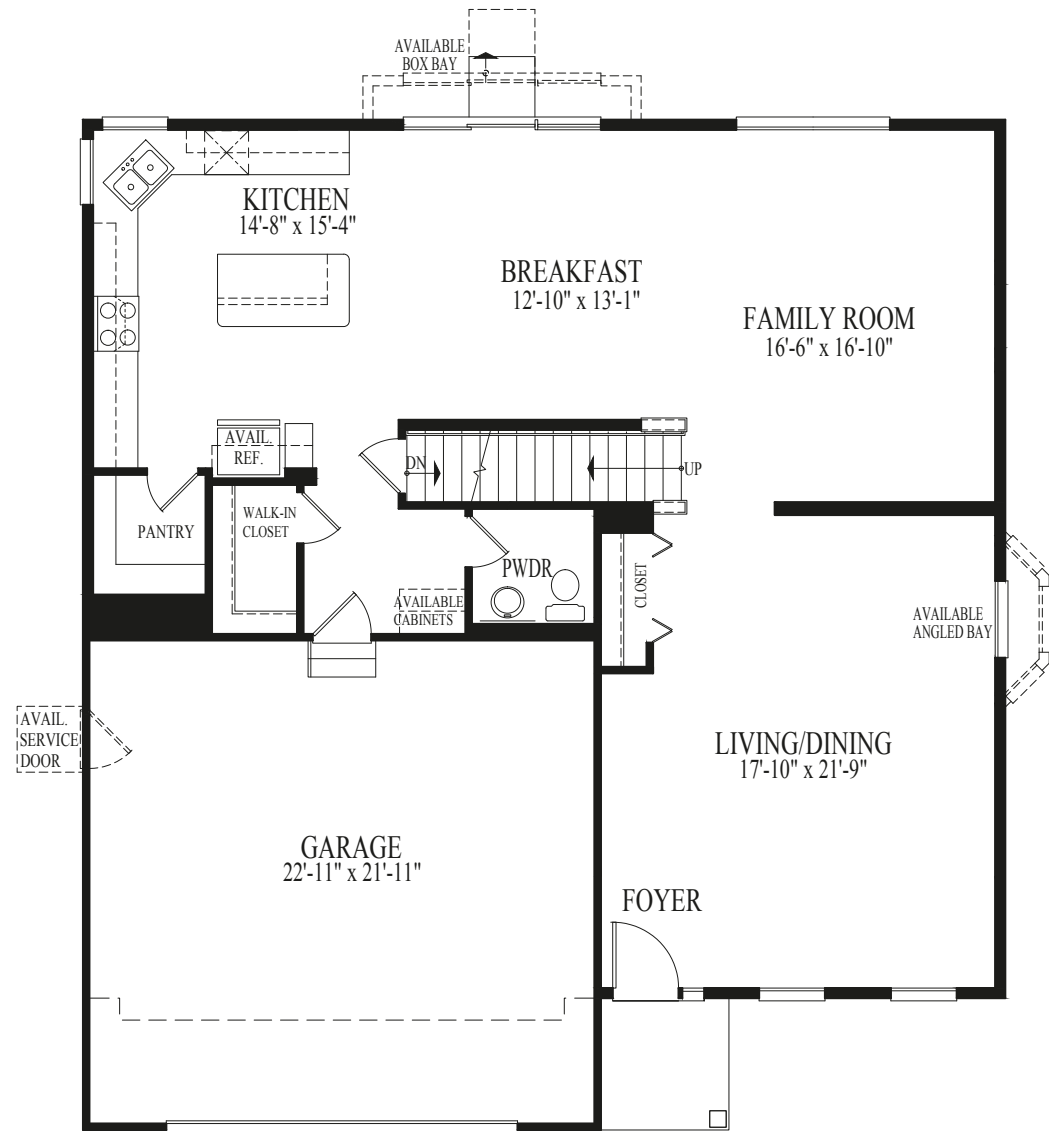
847-984-4588 | drhorton.com/windstone
facebook.com/drhortonchicago



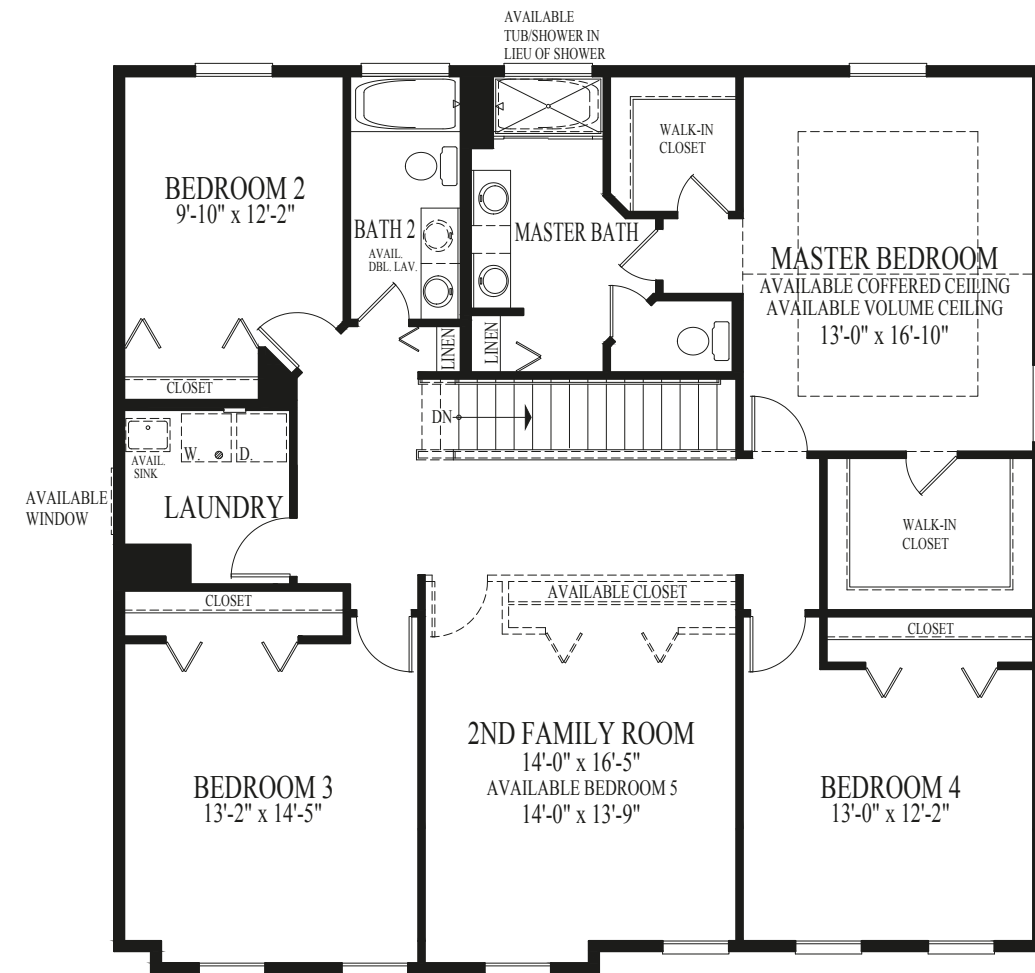
847-984-4588 | drhorton.com/windstone
facebook.com/drhortonchicago



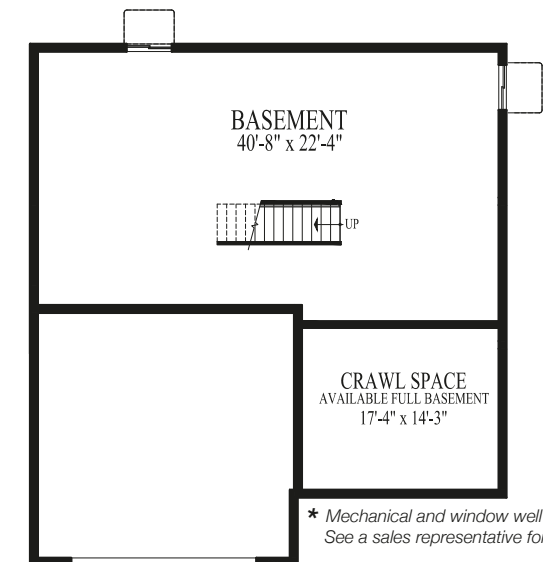
Stonecrest at Windstone



Main Level



Upper Level

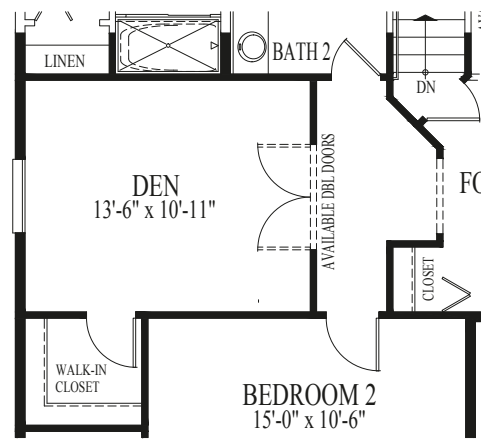


Basement*

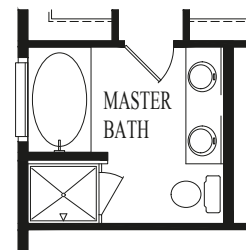
* Mechanical and window well locations may vary. See a sales representative for details.

Come Home To Stay...

Takoma Options



Available Den



Available Luxury Master Bath

Come Home To Stay...

Takoma at Windstone



Elevation A



Elevation B



Elevation C



Elevation D

D.R. Horton's policy of continual attention to detail in design and construction requires that some revisions may be made by the architect or developer during the process of development. All dimensions and measurements are approximate. Floor plans are not to scale. Window sizes and locations vary with exterior design and specifications. Dimensions, features and specifications are subject to change without notice.



Illustrations and landscaping are an artist's conception and are not to scale. Actual elevations may vary. Please consult with your Sales Representative for current details. RESNET® EnergySmart Builder logo used with permission. For more information about RESNET, visit www.resnet.us. Applies to D.R. Horton Chicagoland homes built after March, 2010.



39919 - 8/17

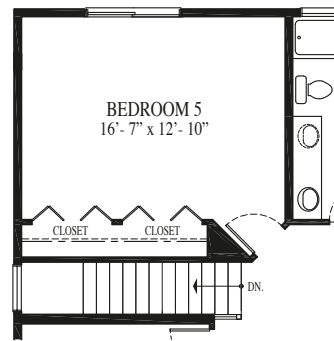
COME HOME TO STAY...

D·R·HORTON[®]
America's Builder

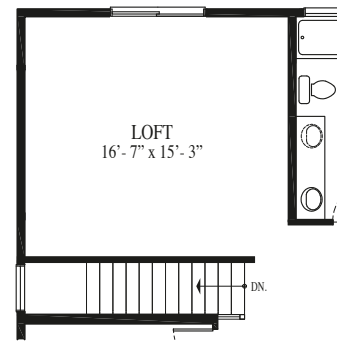
COME HOME TO STAY...

D·R·HORTON[®]
America's Builder

Tuscan Options



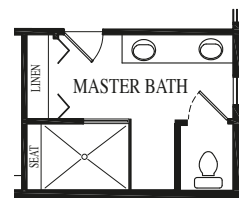
Available Bedroom 5



Loft in Lieu of Available Bedroom 5



Available Luxury Master Bath



Available Master Bath with Serenity Shower

Tuscan at Windstone



Elevation A



Elevation B



Elevation C



Elevation D



Elevation E

D.R. Horton's policy of continual attention to detail in design and construction requires that some revisions may be made by the architect or developer during the process of development. All dimensions and measurements are approximate. Floor plans are not to scale. Window sizes and locations vary with exterior design and specifications. Dimensions, features and specifications are subject to change without notice.

Illustrations and landscaping are an artist's conception and are not to scale. Actual elevations may vary. Please consult with your Sales Representative for current details. RESNET[®] EnergySmart Builder logo used with permission. For more information about RESNET, visit www.resnet.us. Applies to D.R. Horton Chicagoland homes built after March, 2010.

36996U - 5/17

RESNET EnergySmart
Builder
Every Home is a HERS Rated Home

D·R·HORTON[®]
America's Builder

847-984-4588 | drhorton.com/windstone
facebook.com/drhortonchicago

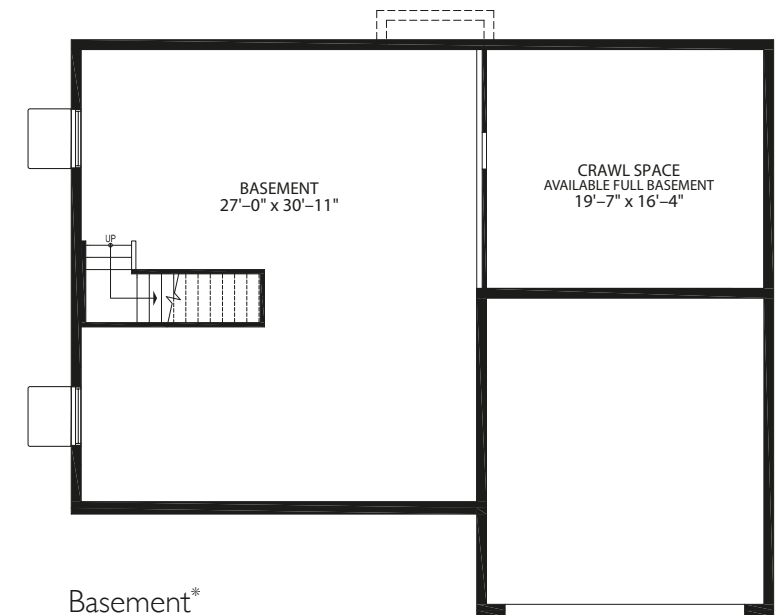
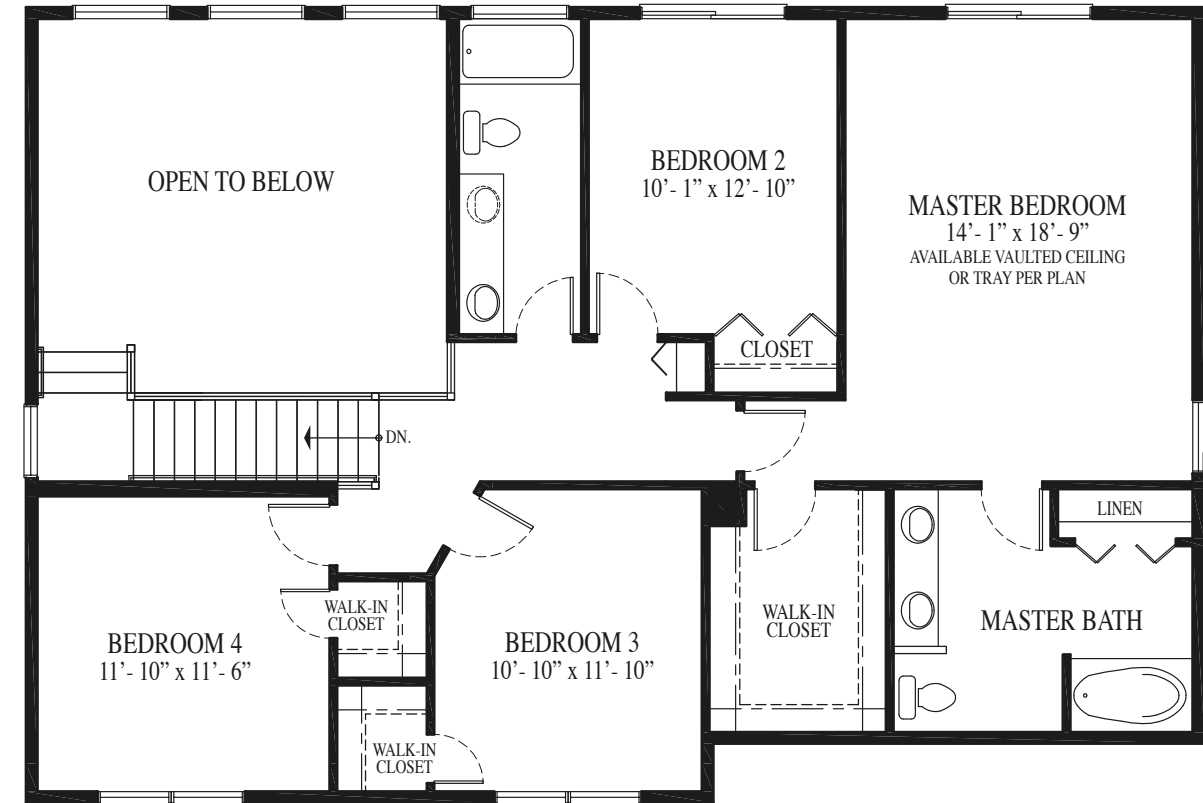
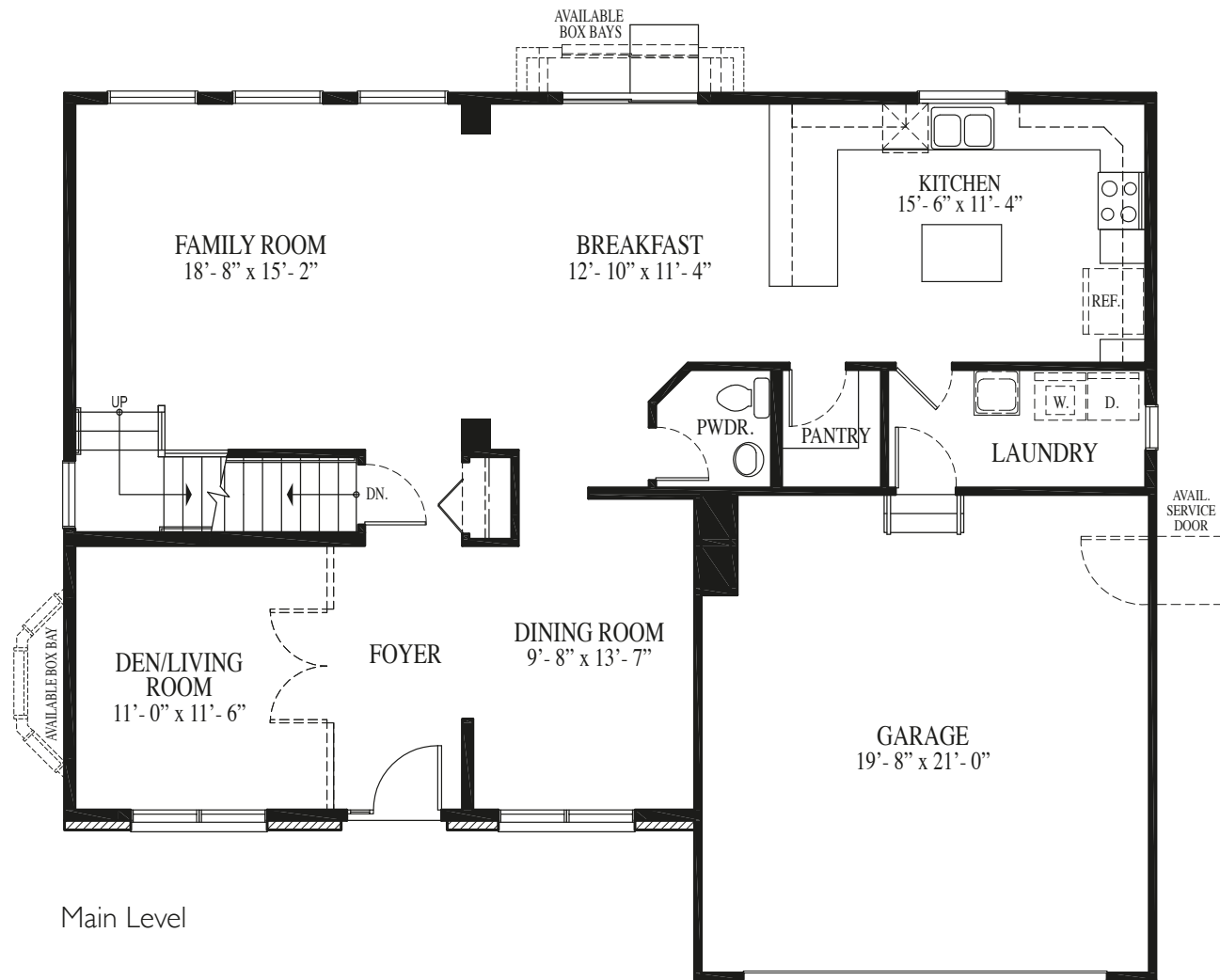


D·R·HORTON[®]
America's Builder

847-984-4588 | drhorton.com/windstone
facebook.com/drhortonchicago



Tuscan at Windstone



* Mechanical and window well locations may vary. See a sales representative for details.



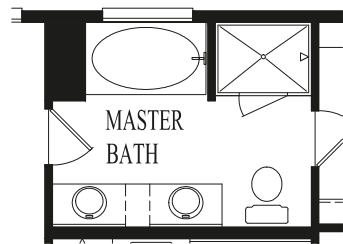
COME HOME TO STAY...



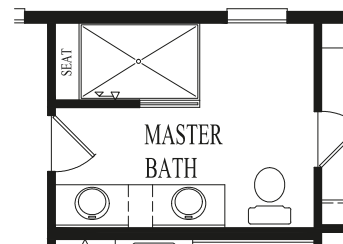
COME HOME TO STAY...



Winston Options



Available Luxury Master Bath



Available Master Bath with Serenity Shower

Winston at Windstone



Elevation A



Elevation B



Elevation C



Elevation D

D.R. Horton's policy of continual attention to detail in design and construction requires that some revisions may be made by the architect or developer during the process of development. All dimensions and measurements are approximate. Floor plans are not to scale. Window sizes and locations vary with exterior design and specifications. Dimensions, features and specifications are subject to change without notice.

Illustrations and landscaping are an artist's conception and are not to scale. Actual elevations may vary. Please consult with your Sales Representative for current details. RESNET® EnergySmart Builder logo used with permission. For more information about RESNET, visit www.resnet.us. Applies to D.R. Horton Chicagoland homes built after March, 2010.

36996v3 - 5/17



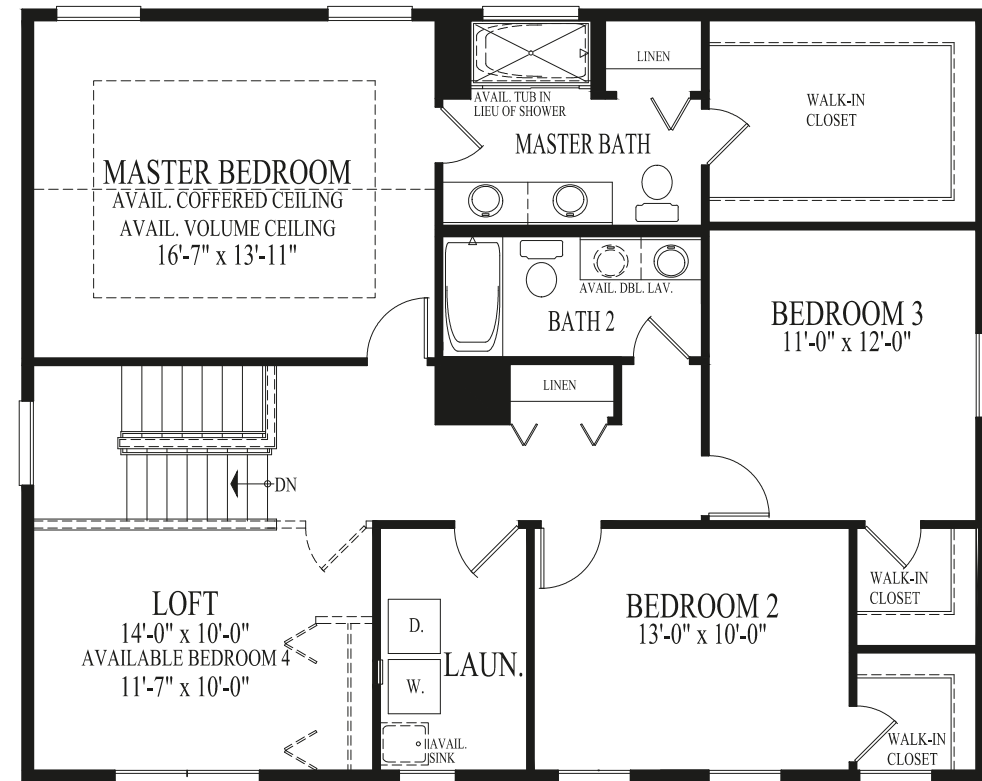
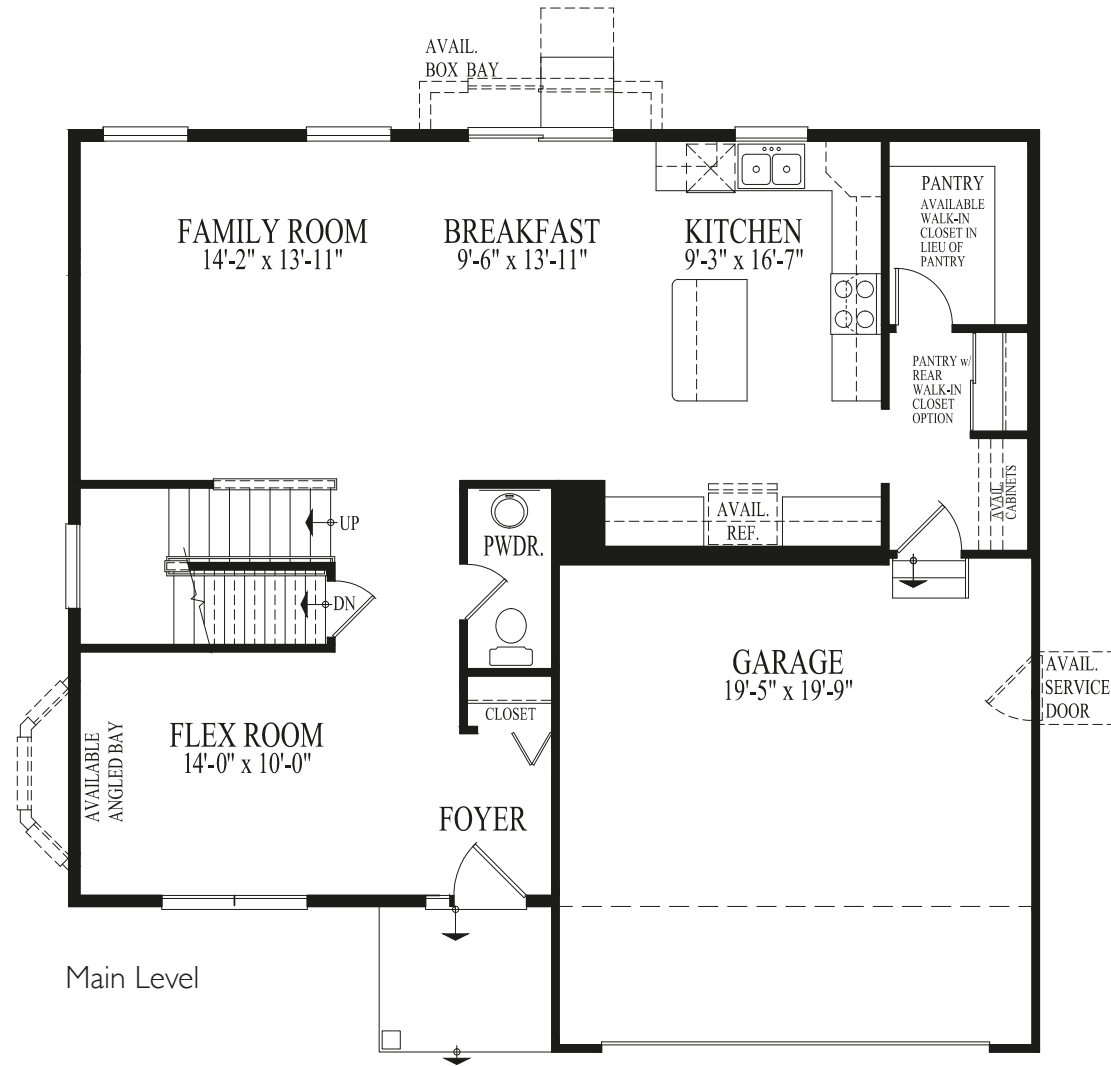
847-984-4588 | drhorton.com/windstone
facebook.com/drhortonchicago



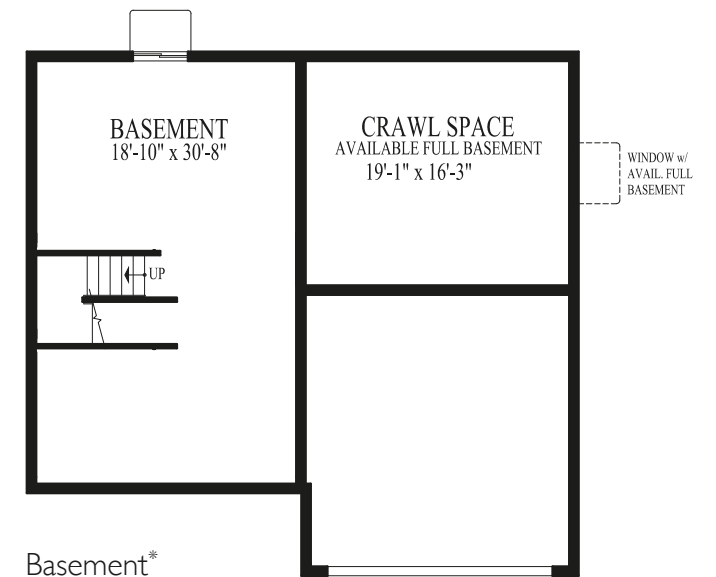
847-984-4588 | drhorton.com/windstone
facebook.com/drhortonchicago



Winston at Windstone



Upper Level



Basement*

* Mechanical and window well locations may vary. See a sales representative for details.