

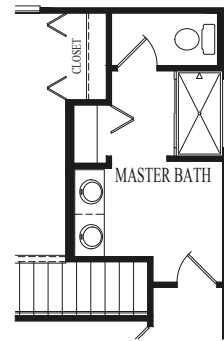
COME HOME TO STAY...



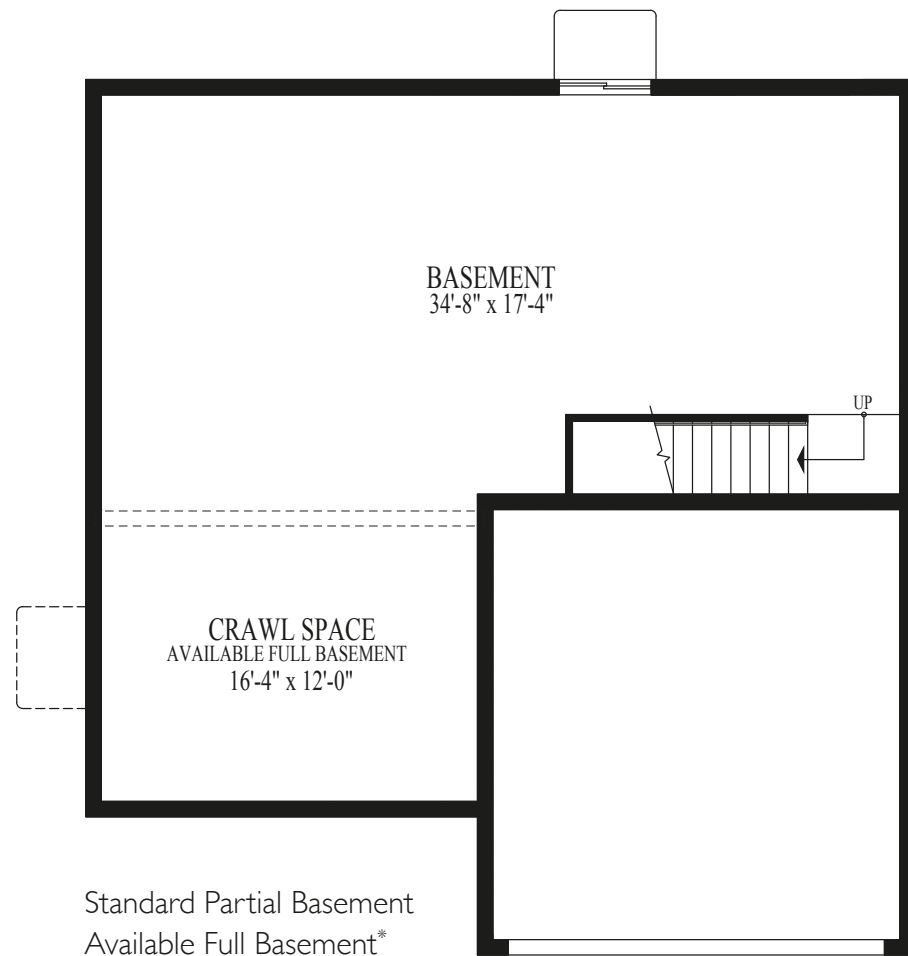
COME HOME TO STAY...



Eastwood Options



Available Deluxe Master Bath



Standard Partial Basement Available Full Basement*

* Mechanical and window well locations may vary. See a sales representative for details.

Eastwood at Sable Ridge



Elevation A



Elevation B



Elevation C



Elevation D

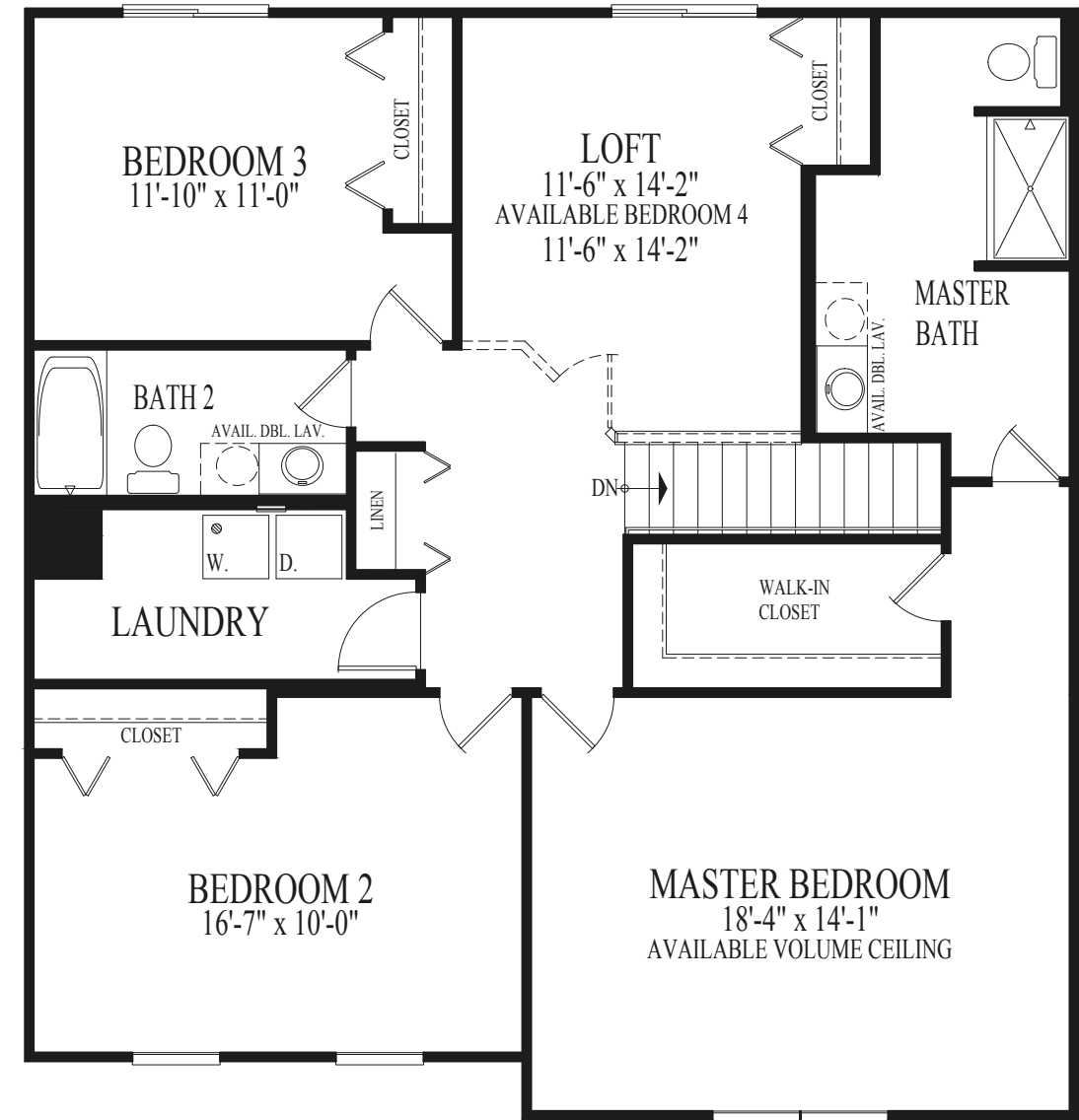
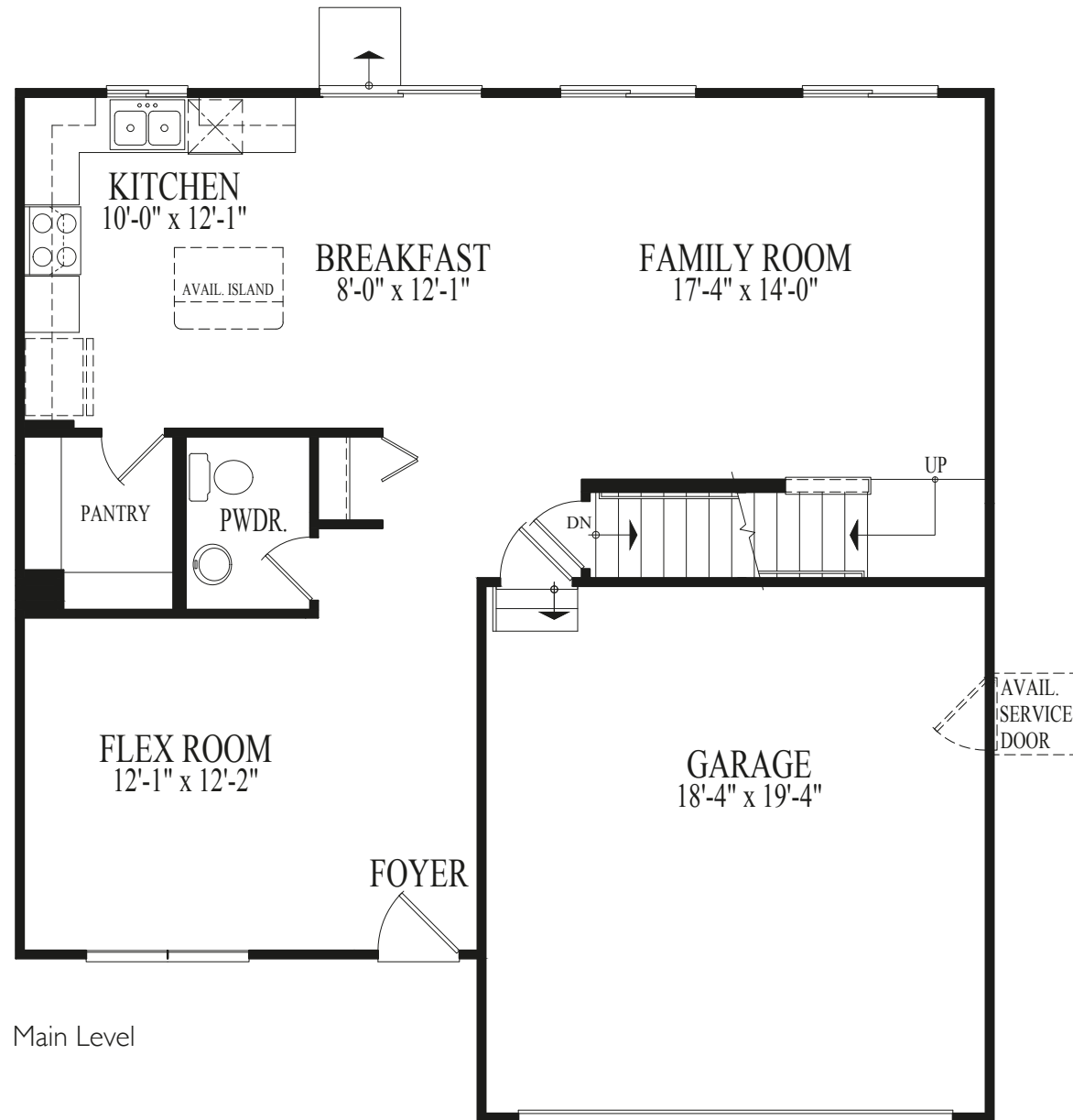
D.R. Horton's policy of continual attention to detail in design and construction requires that some revisions may be made by the architect or developer during the process of development. All dimensions and measurements are approximate. Floor plans are not to scale. Window sizes and locations vary with exterior design and specifications. Dimensions, features and specifications are subject to change without notice.

Illustrations and landscaping are an artist's conception and are not to scale. Actual elevations may vary. Please consult with your Sales Representative for current details. RESNET® EnergySmart Builder logo used with permission. For more information about RESNET, visit www.resnet.us. Applies to D.R. Horton Chicagoland homes built after March, 2010.

33769v2 - 8/16



Eastwood at Sable Ridge



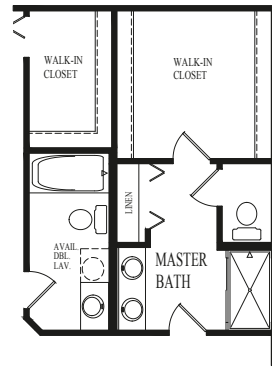
COME HOME TO STAY...



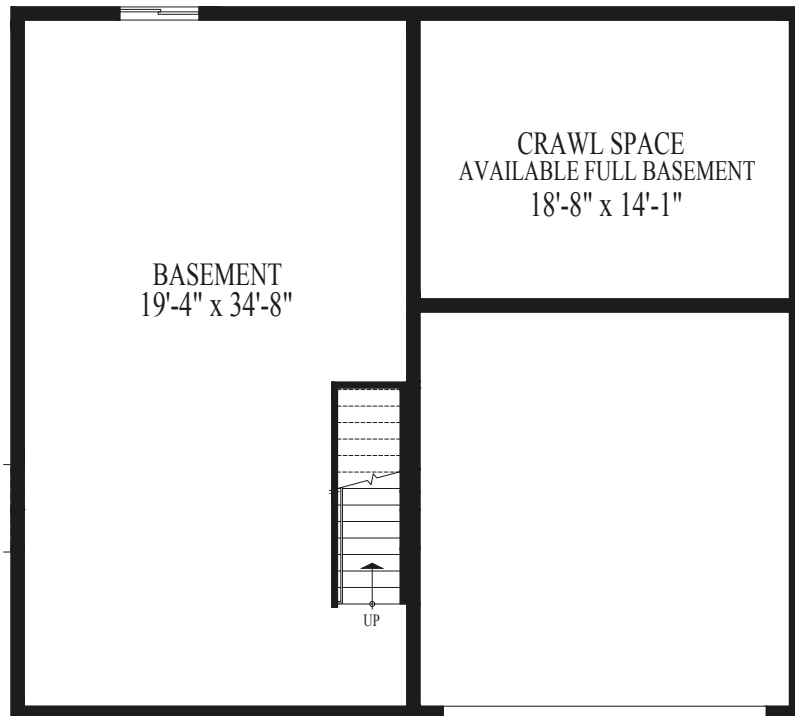
COME HOME TO STAY...



Highland Options



Upper Level with Available Deluxe Master Bath



Standard Partial Basement Available Full Basement*

* Mechanical and window well locations may vary. See a sales representative for details.

Highland at Sable Ridge



Elevation A



Elevation B



Elevation C



Elevation D

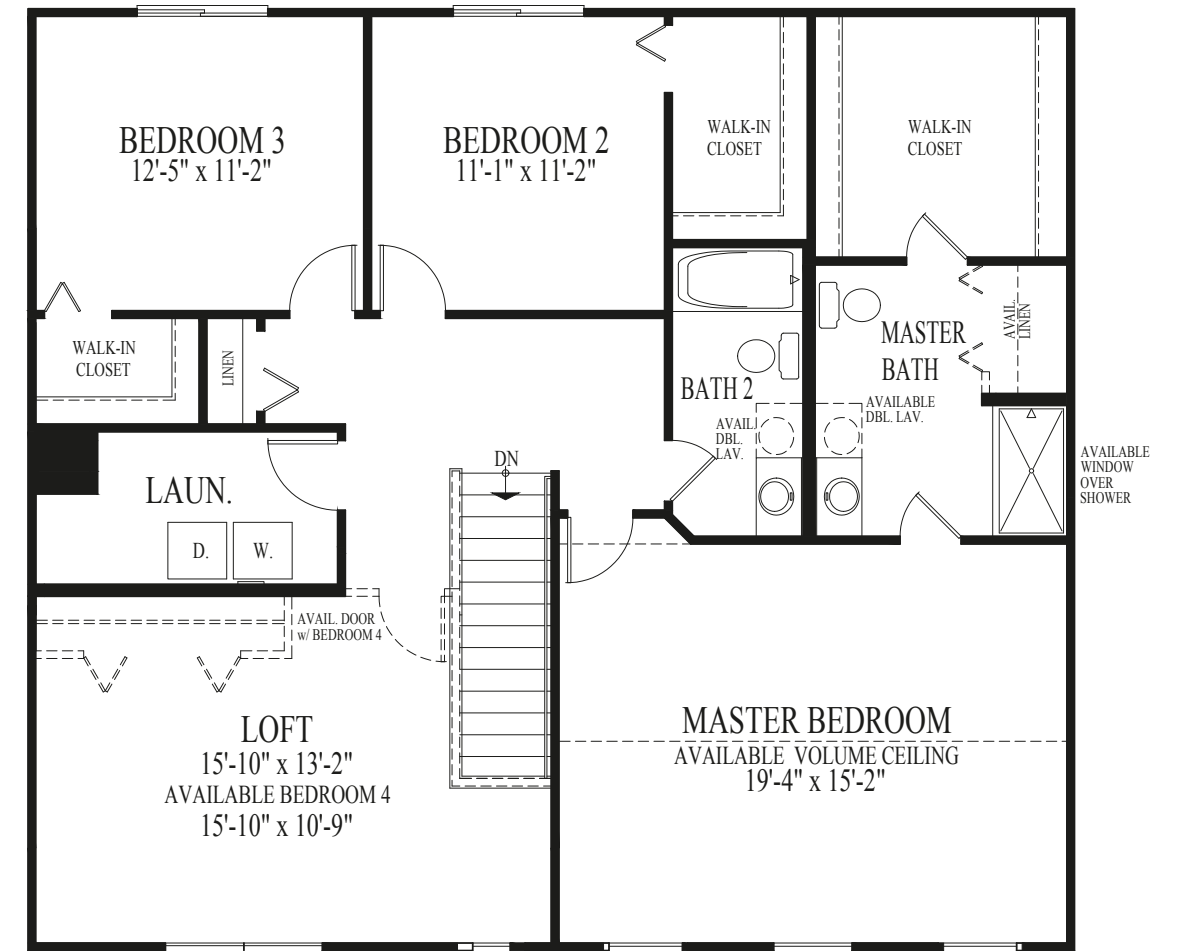
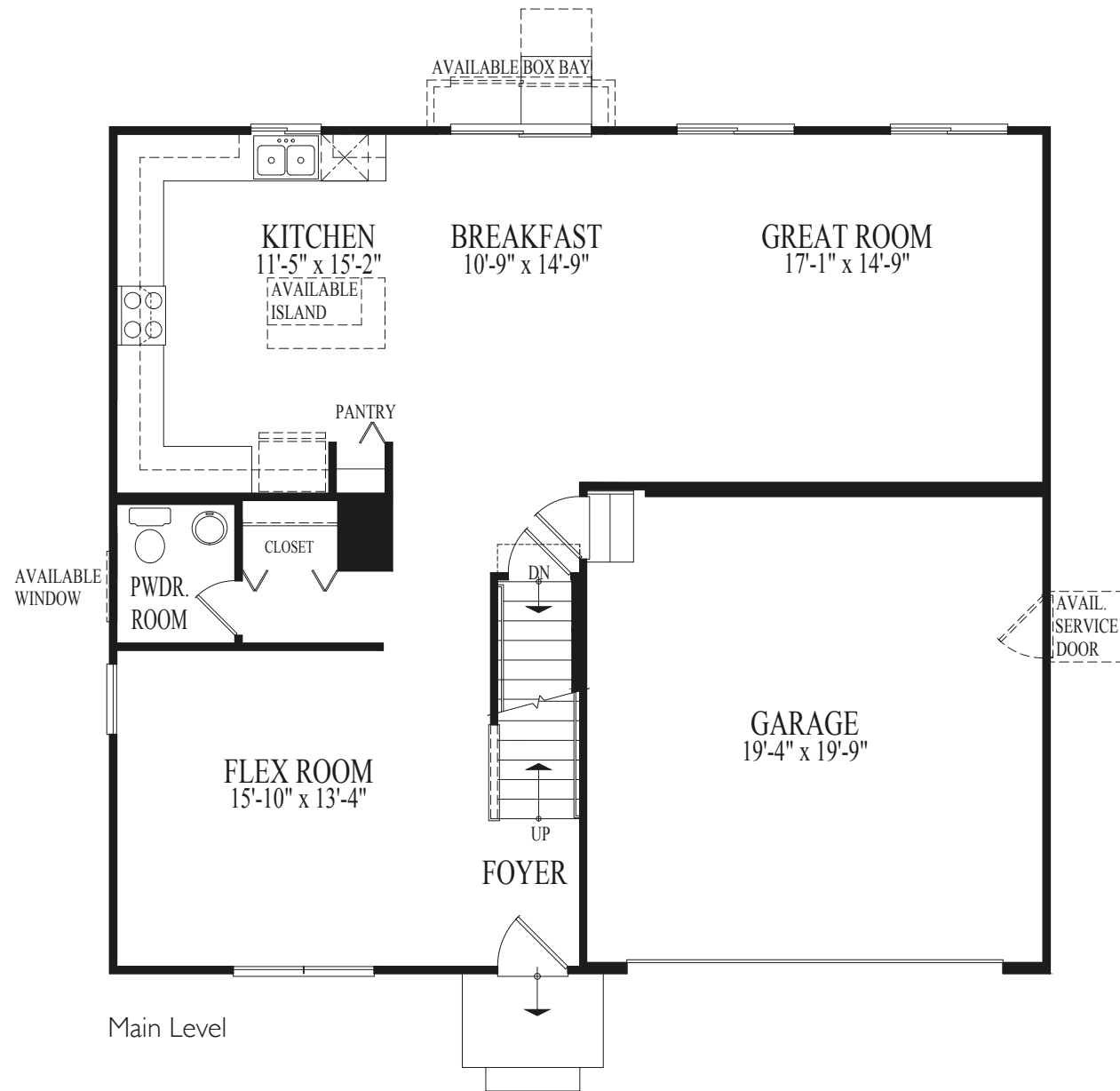
D.R. Horton's policy of continual attention to detail in design and construction requires that some revisions may be made by the architect or developer during the process of development. All dimensions and measurements are approximate. Floor plans are not to scale. Window sizes and locations vary with exterior design and specifications. Dimensions, features and specifications are subject to change without notice.

Illustrations and landscaping are an artist's conception and are not to scale. Actual elevations may vary. Please consult with your Sales Representative for current details. RESNET® EnergySmart Builder logo used with permission. For more information about RESNET, visit www.resnet.us. Applies to D.R. Horton Chicagoland homes built after March, 2010.

33769v2 - 8/16



Highland at Sable Ridge



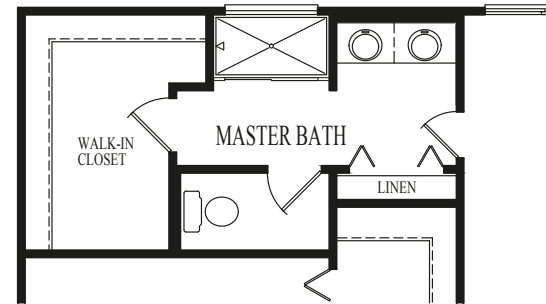
COME HOME TO STAY...



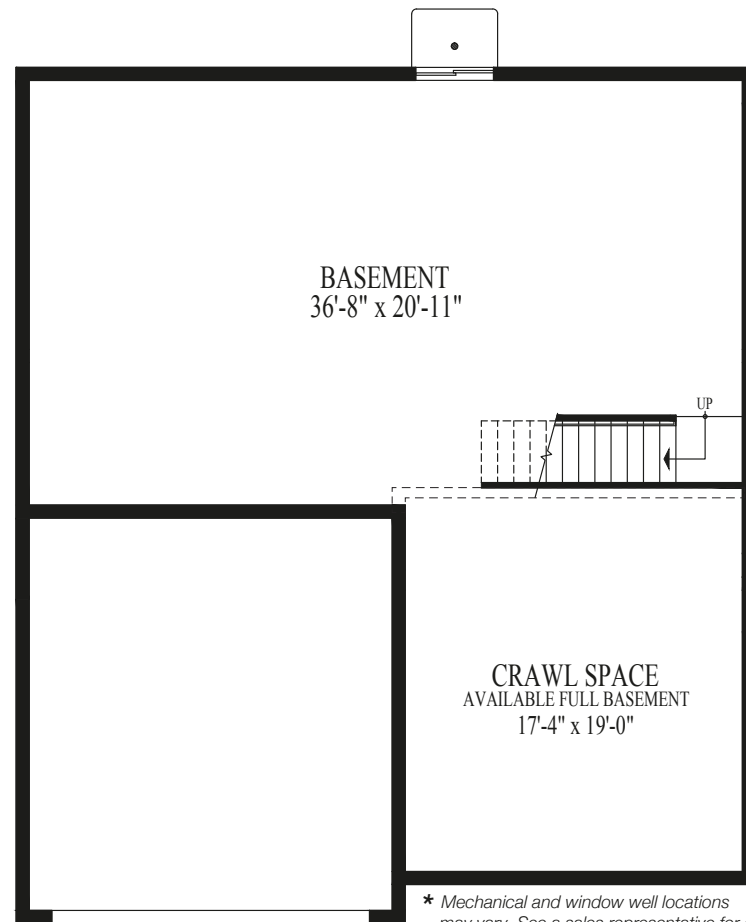
COME HOME TO STAY...



North Lake Options



Available Deluxe Master Bath



* Mechanical and window well locations may vary. See a sales representative for details.

Standard Partial Basement
Available Full Basement*

North Lake at Sable Ridge



Elevation A



Elevation B



Elevation C



Elevation D

D.R. Horton's policy of continual attention to detail in design and construction requires that some revisions may be made by the architect or developer during the process of development. All dimensions and measurements are approximate. Floor plans are not to scale. Window sizes and locations vary with exterior design and specifications. Dimensions, features and specifications are subject to change without notice.

Illustrations and landscaping are an artist's conception and are not to scale. Actual elevations may vary. Please consult with your Sales Representative for current details. RESNET® EnergySmart Builder logo used with permission. For more information about RESNET, visit www.resnet.us. Applies to D.R. Horton Chicagoland homes built after March, 2010.

33769v2 - 8/16



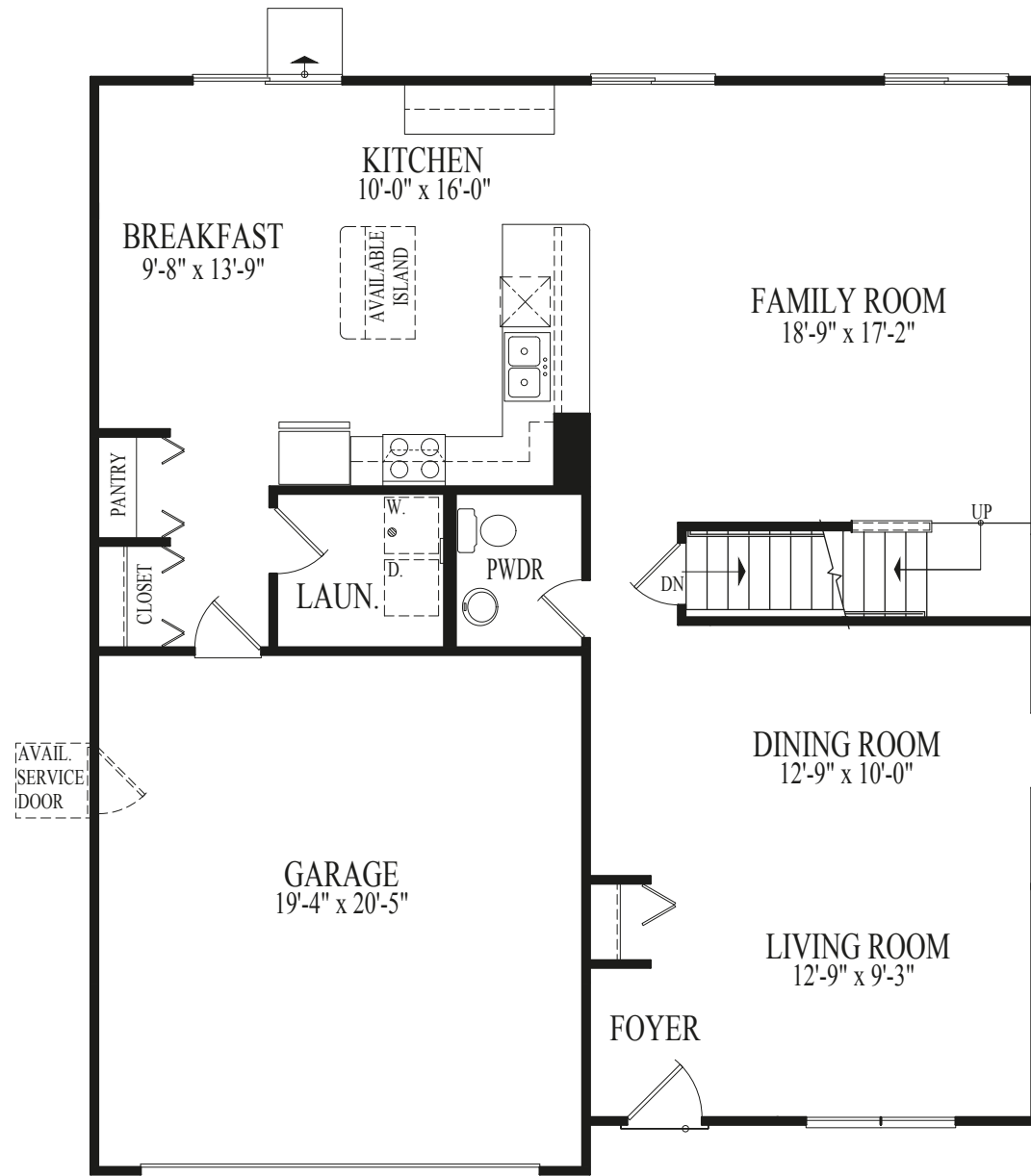
drhorton.com/chicago
facebook.com/drhortonchicago



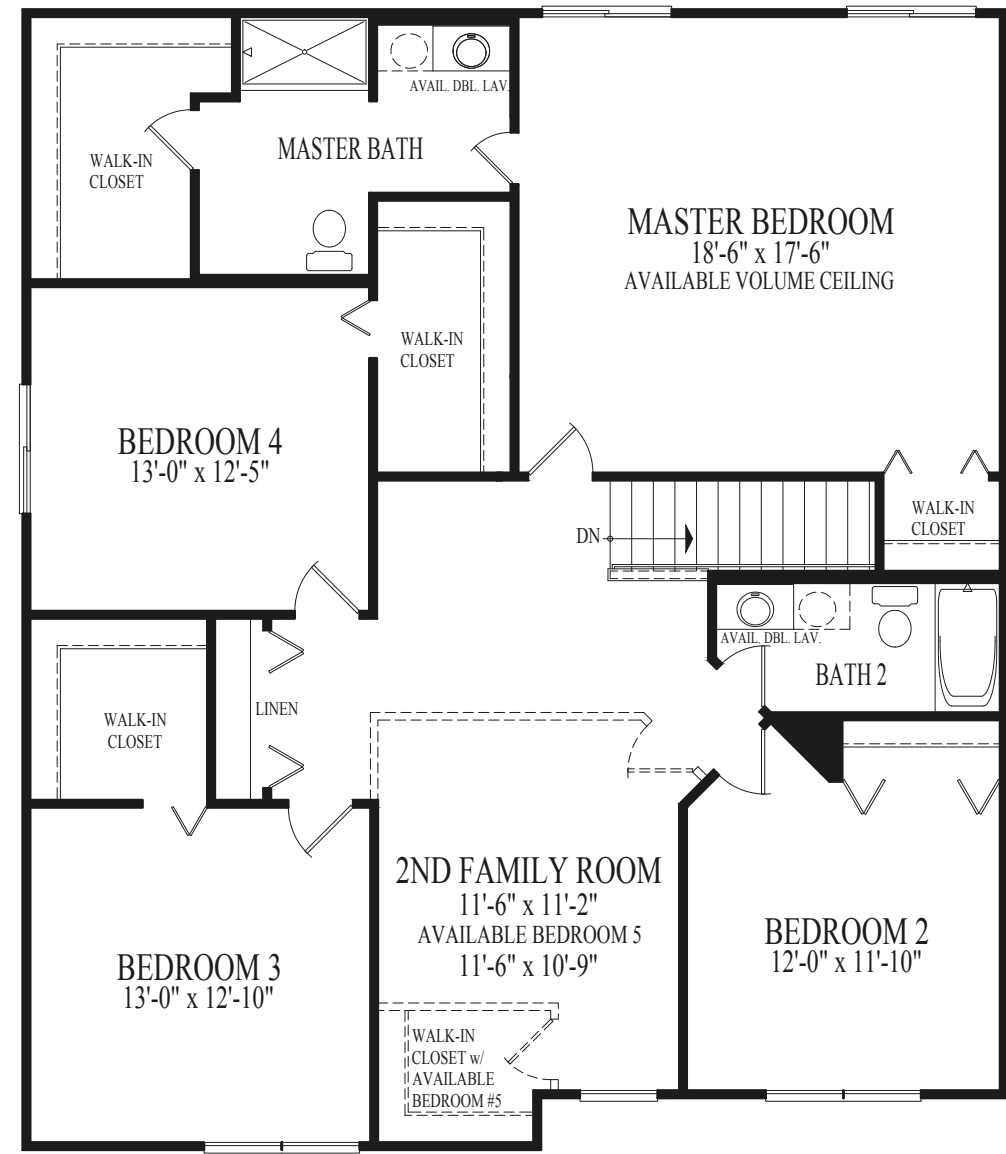
drhorton.com/chicago
facebook.com/drhortonchicago



North Lake at Sable Ridge



Main Level



Upper Level

COME HOME TO STAY...

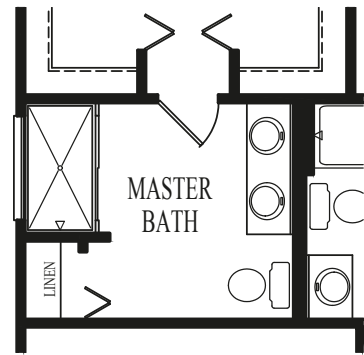


COME HOME TO STAY...



Summerlin Options

Summerlin at Sable Ridge



Available Deluxe Master Bath



Available Bedroom 3



Elevation A



Elevation B



Elevation C



Elevation D

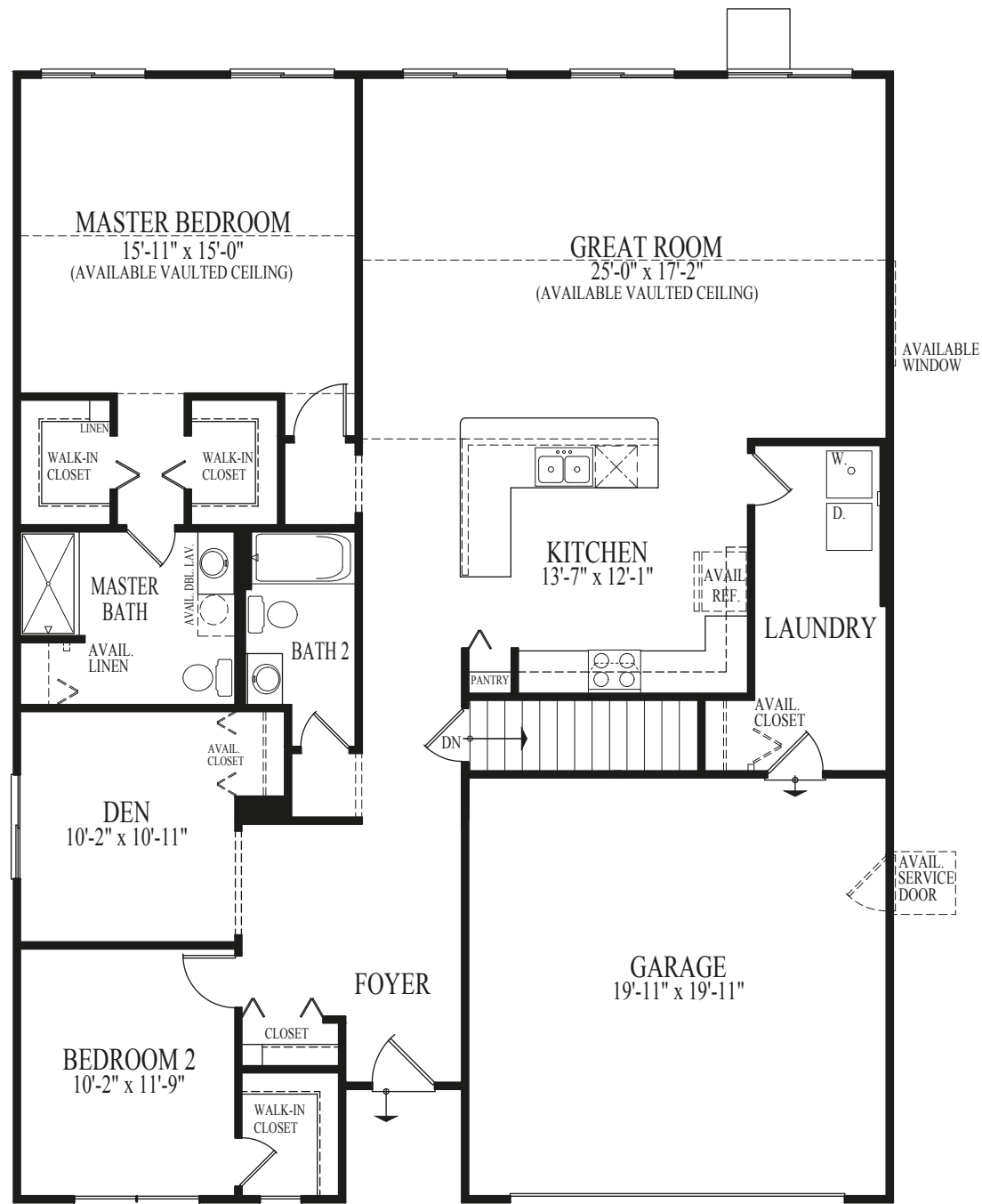
D.R. Horton's policy of continual attention to detail in design and construction requires that some revisions may be made by the architect or developer during the process of development. All dimensions and measurements are approximate. Floor plans are not to scale. Window sizes and locations vary with exterior design and specifications. Dimensions, features and specifications are subject to change without notice.

Illustrations and landscaping are an artist's conception and are not to scale. Actual elevations may vary. Please consult with your Sales Representative for current details. RESNET® EnergySmart Builder logo used with permission. For more information about RESNET, visit www.resnet.us. Applies to D.R. Horton Chicagoland homes built after March, 2010.

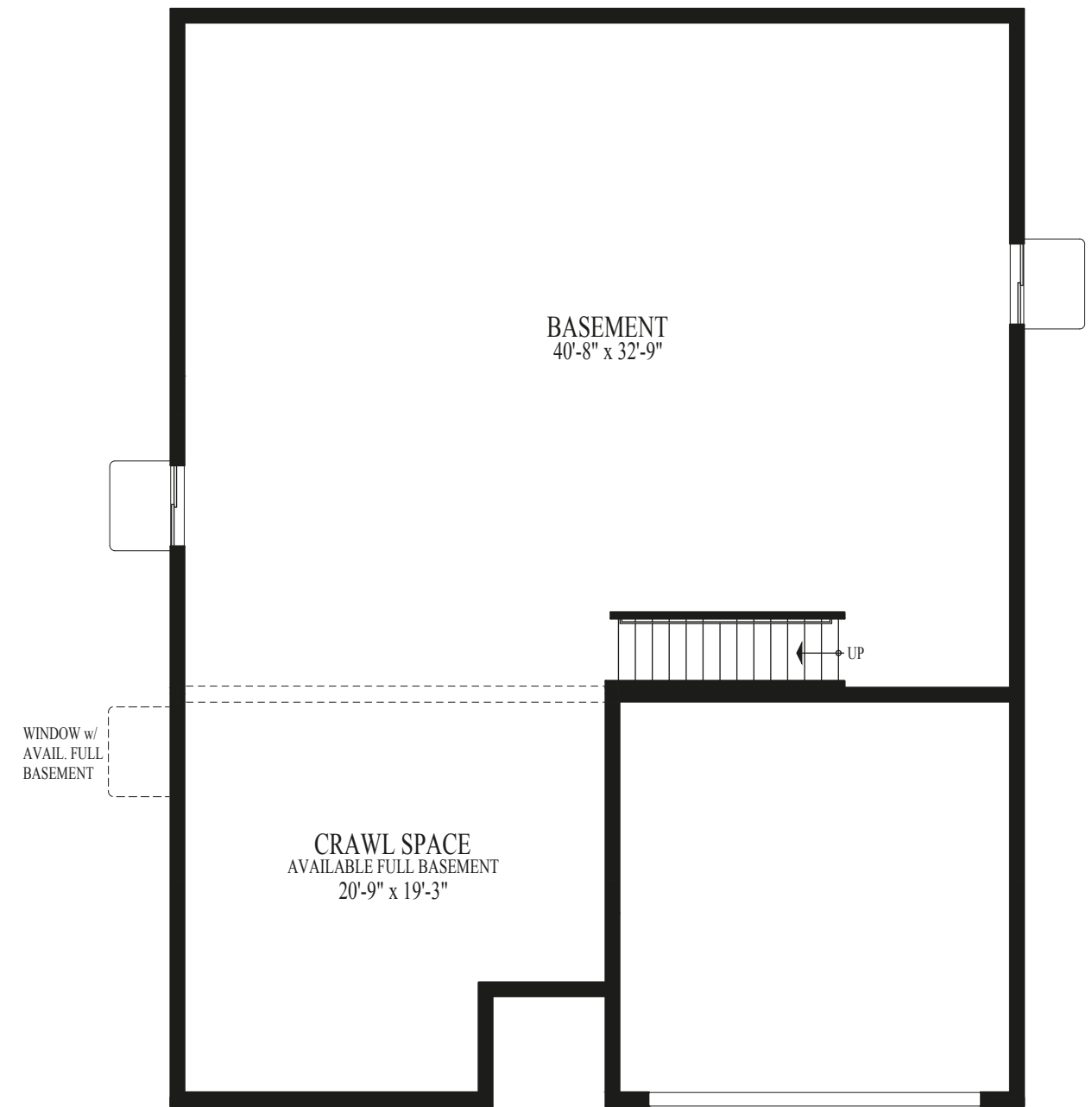
33769v2 - 8/16



Summerlin at Sable Ridge



Main Level



Standard Partial Basement
Available Full Basement*

* Mechanical and window well locations may vary. See a sales representative for details.