

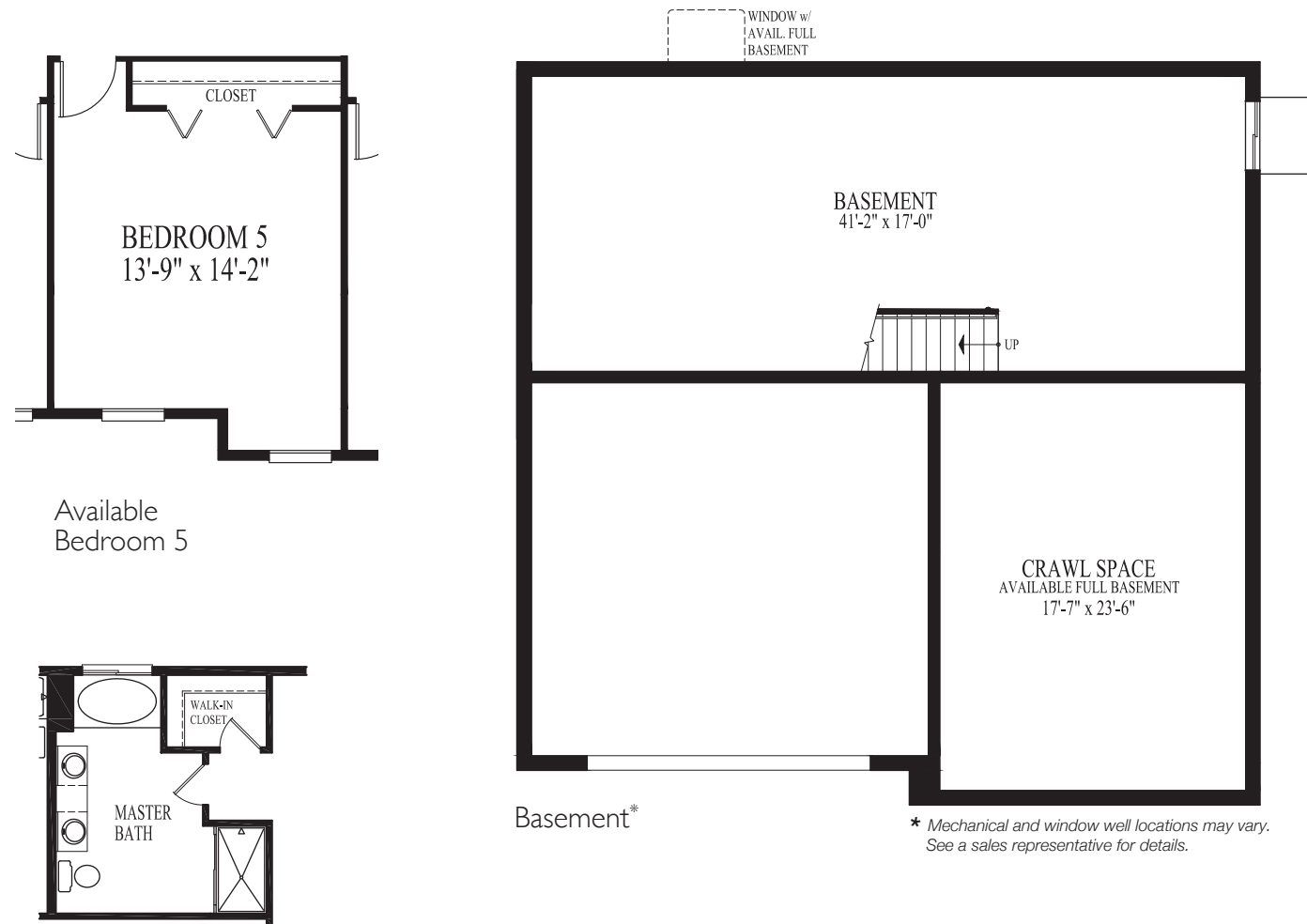
COME HOME TO STAY...



COME HOME TO STAY...



Arlington Options



Arlington at Heather Glen



Elevation A



Elevation B



Elevation C



Elevation D

D.R. Horton's policy of continual attention to detail in design and construction requires that some revisions may be made by the architect or developer during the process of development. All dimensions and measurements are approximate. Floor plans are not to scale. Window sizes and locations vary with exterior design and specifications. Dimensions, features and specifications are subject to change without notice.

Illustrations and landscaping are an artist's conception and are not to scale. Actual elevations may vary. Please consult with your Sales Representative for current details. RESNET® EnergySmart Builder logo used with permission. For more information about RESNET, visit www.resnet.us. Applies to D.R. Horton Chicagoland homes built after March, 2010.

25733 - 3/15



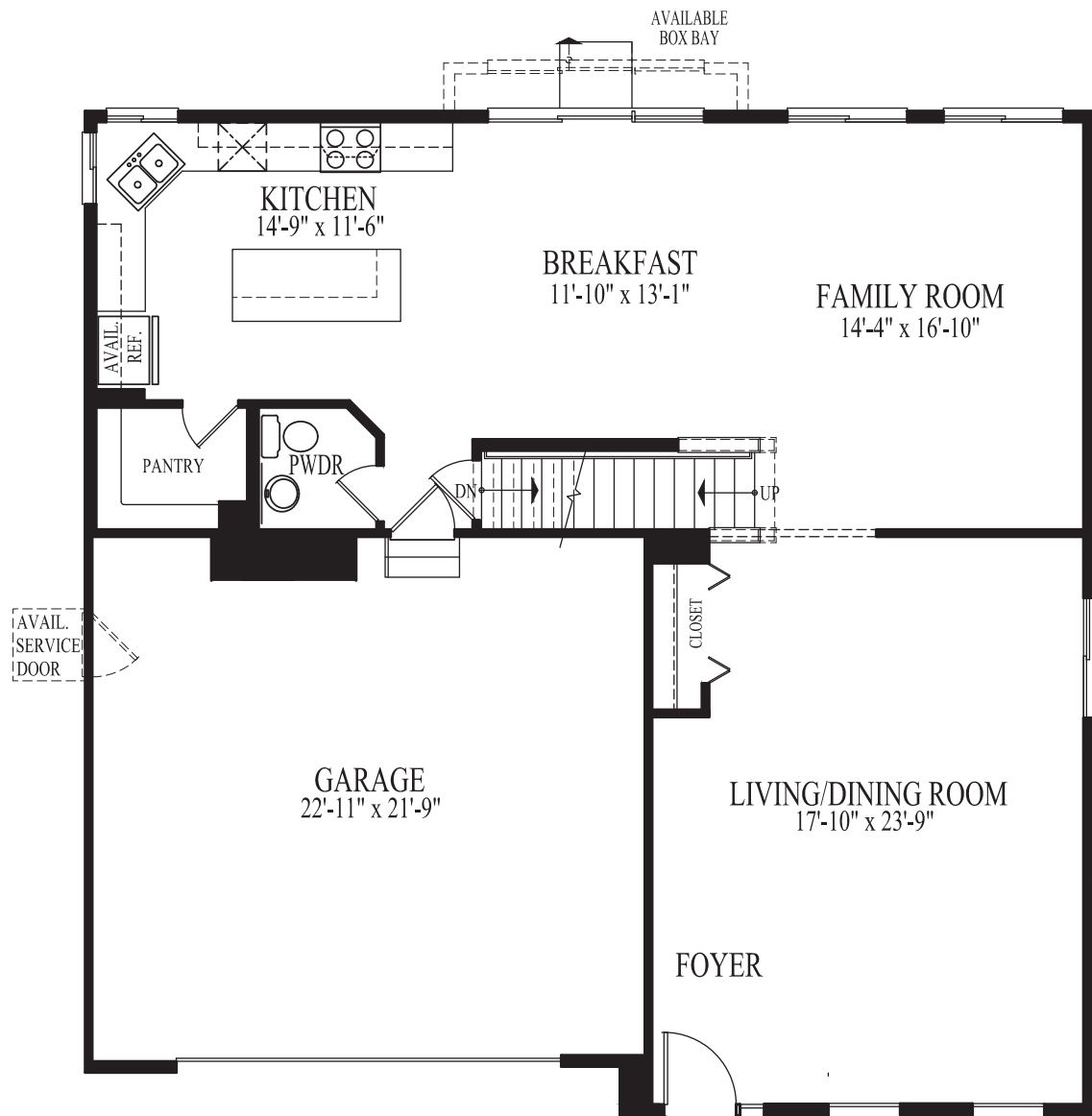
847-984-4522 | www.drhorton.com/heatherglen
facebook.com/drhortonchicago



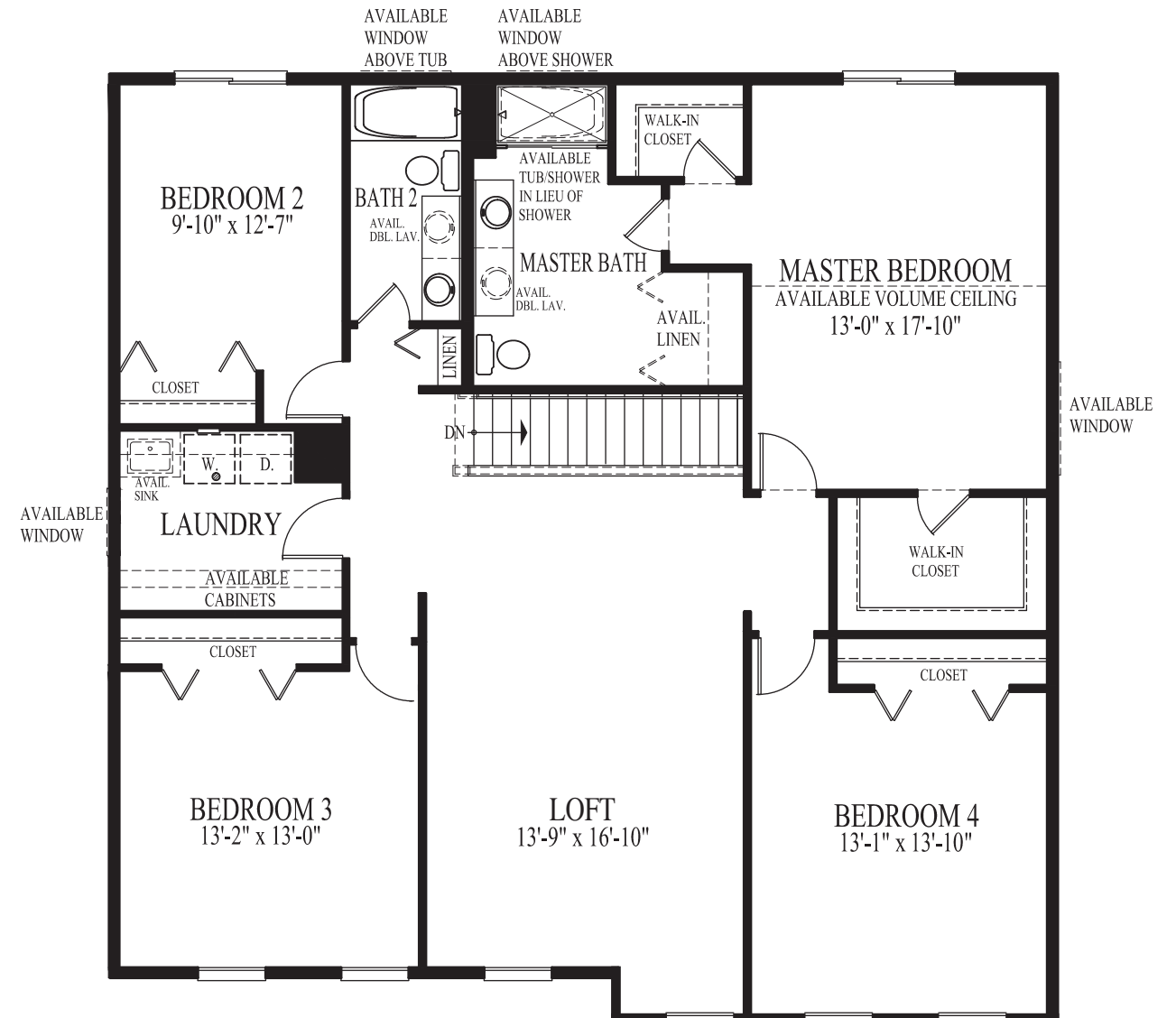
847-984-4522 | www.drhorton.com/heatherglen
facebook.com/drhortonchicago



Arlington at Heather Glen



Main Level



Upper Level

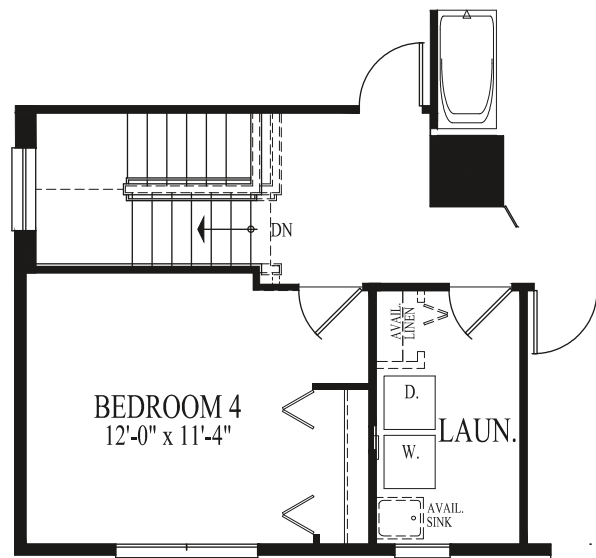
COME HOME TO STAY...



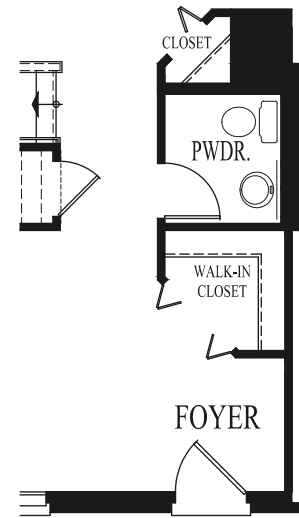
COME HOME TO STAY...



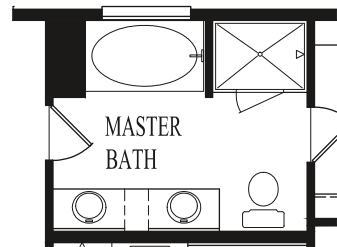
Clearview Options



Available Bedroom 4



Available Closets



Available Luxury Master Bath

Clearview at Heather Glen



Elevation A



Elevation B



Elevation C



Elevation D

D.R. Horton's policy of continual attention to detail in design and construction requires that some revisions may be made by the architect or developer during the process of development. All dimensions and measurements are approximate. Floor plans are not to scale. Window sizes and locations vary with exterior design and specifications. Dimensions, features and specifications are subject to change without notice.

Illustrations and landscaping are an artist's conception and are not to scale. Actual elevations may vary. Please consult with your Sales Representative for current details. RESNET® EnergySmart Builder logo used with permission. For more information about RESNET, visit www.resnet.us. Applies to D.R. Horton Chicagoland homes built after March, 2010.

25064 - 2/15



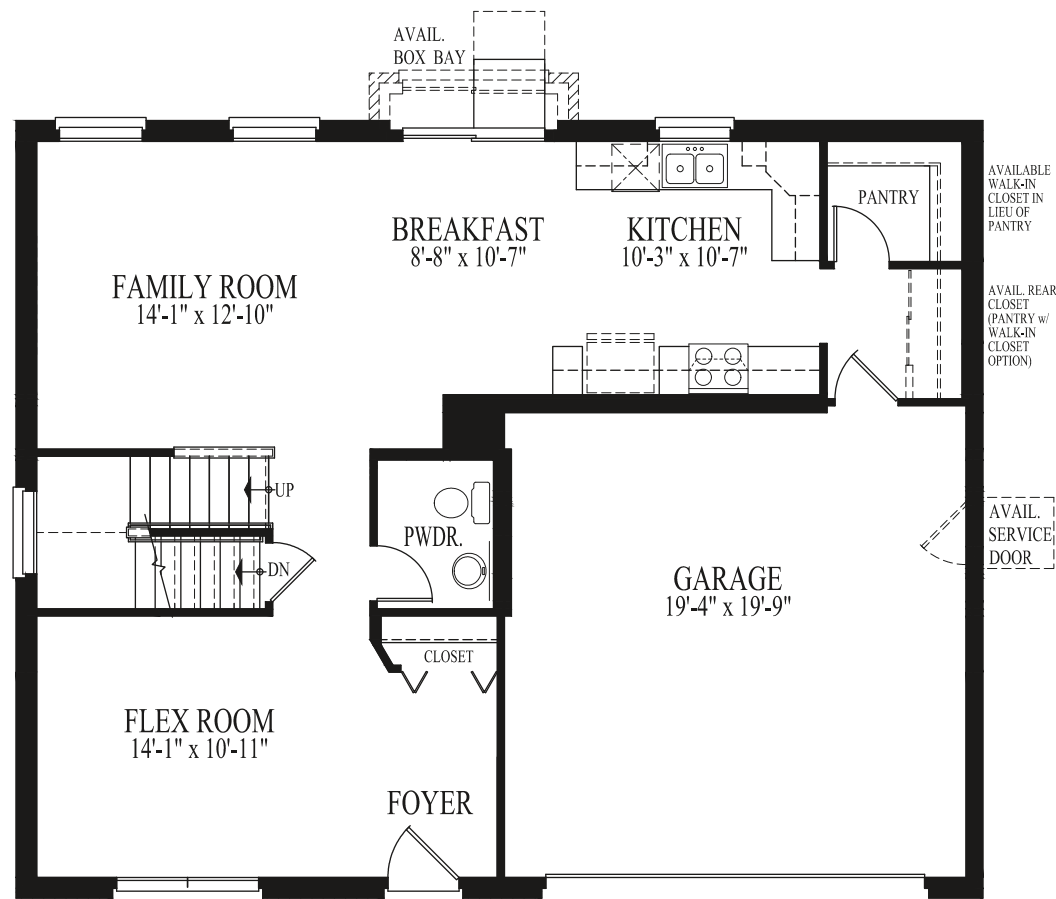
847-984-4522 | www.drhorton.com/heatherglen
facebook.com/drhortonchicago



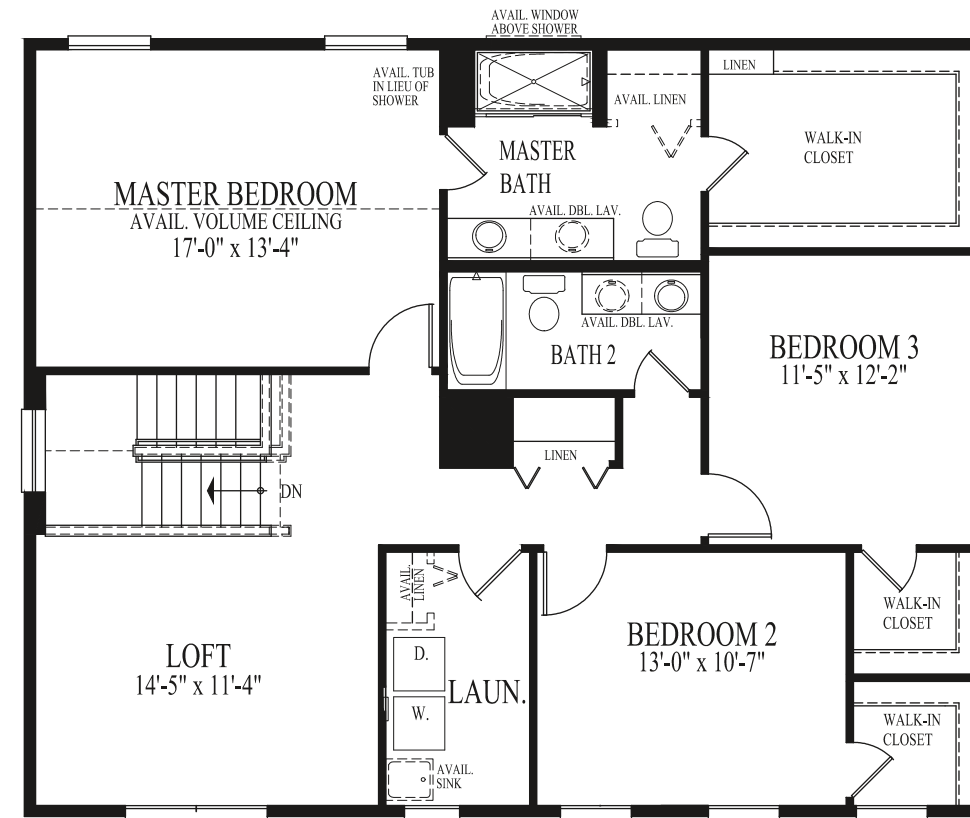
847-984-4522 | www.drhorton.com/heatherglen
facebook.com/drhortonchicago



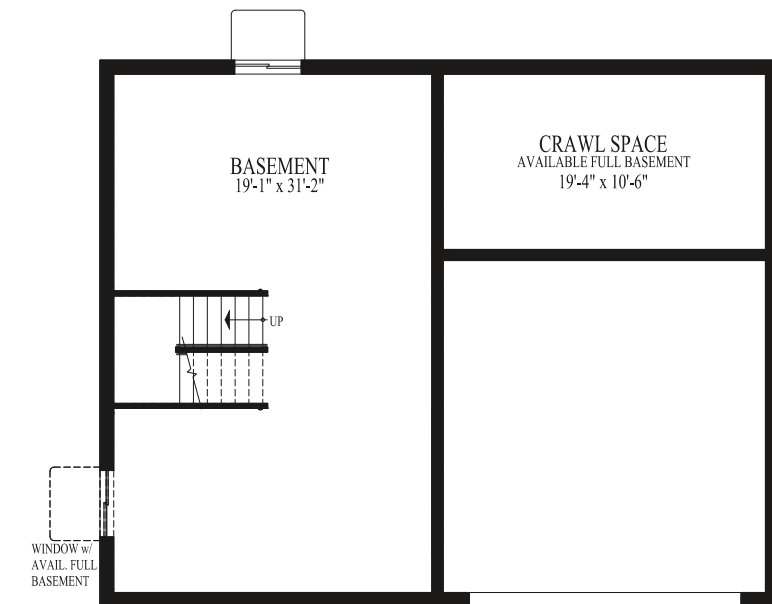
Clearview at Heather Glen



Main Level



Upper Level



Basement*

* Mechanical and window well locations may vary. See a sales representative for details.

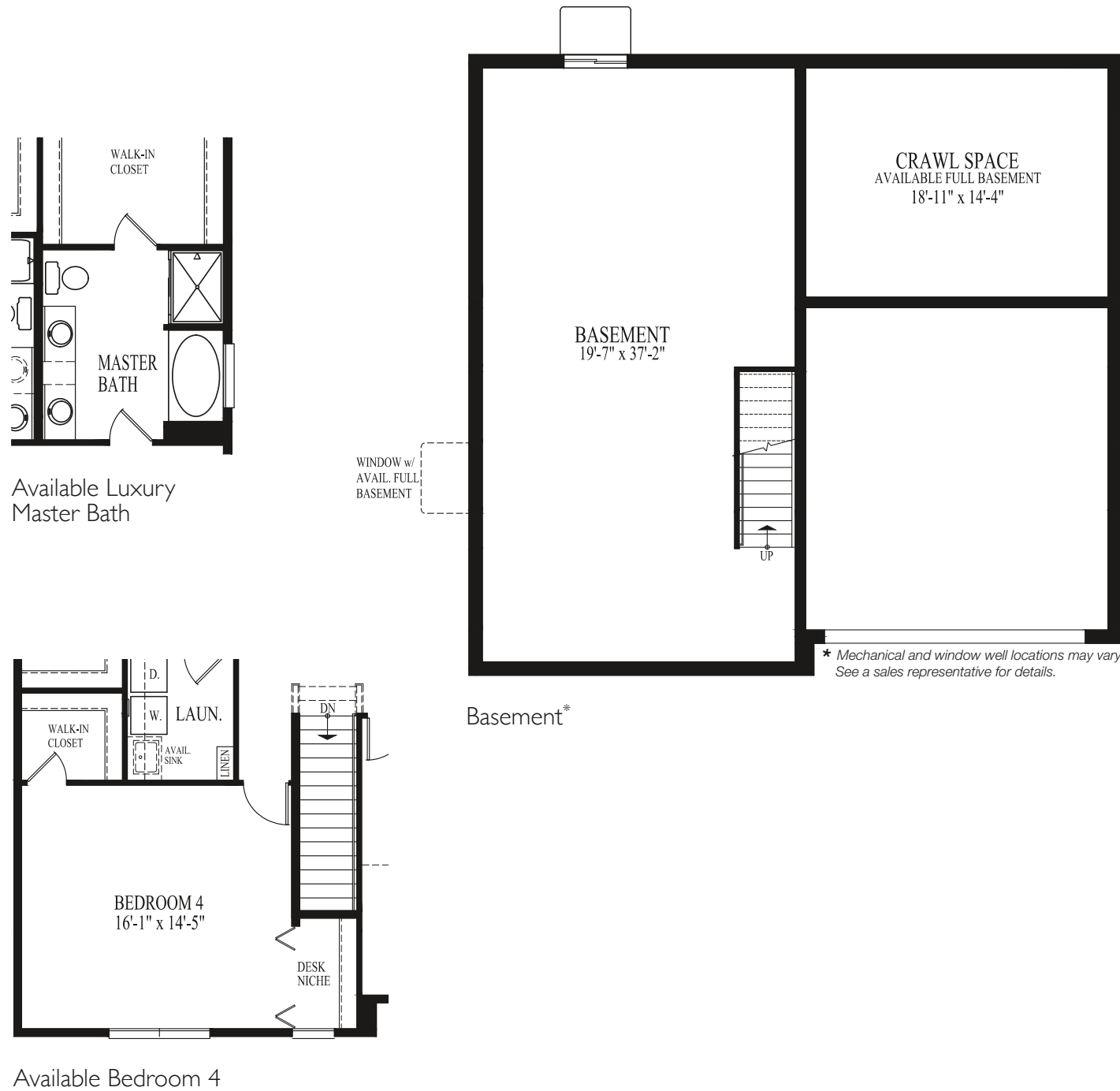
COME HOME TO STAY...

D·R·HORTON[®]
America's Builder

COME HOME TO STAY...

D·R·HORTON[®]
America's Builder

Glenmont Options



Glenmont at Heather Glen



Elevation A



Elevation B



Elevation C



Elevation D

D.R. Horton's policy of continual attention to detail in design and construction requires that some revisions may be made by the architect or developer during the process of development. All dimensions and measurements are approximate. Floor plans are not to scale. Window sizes and locations vary with exterior design and specifications. Dimensions, features and specifications are subject to change without notice.

Illustrations and landscaping are an artist's conception and are not to scale. Actual elevations may vary. Please consult with your Sales Representative for current details. RESNET[®] EnergySmart Builder logo used with permission. For more information about RESNET, visit www.resnet.us. Applies to D.R. Horton Chicagoland homes built after March, 2010.

25064 - 2/15

RESNET EnergySmart
Builder
Every Home is a HERS Rated Home

D·R·HORTON[®]
America's Builder

847-984-4522 | www.drhorton.com/heatherglen
facebook.com/drhortonchicago

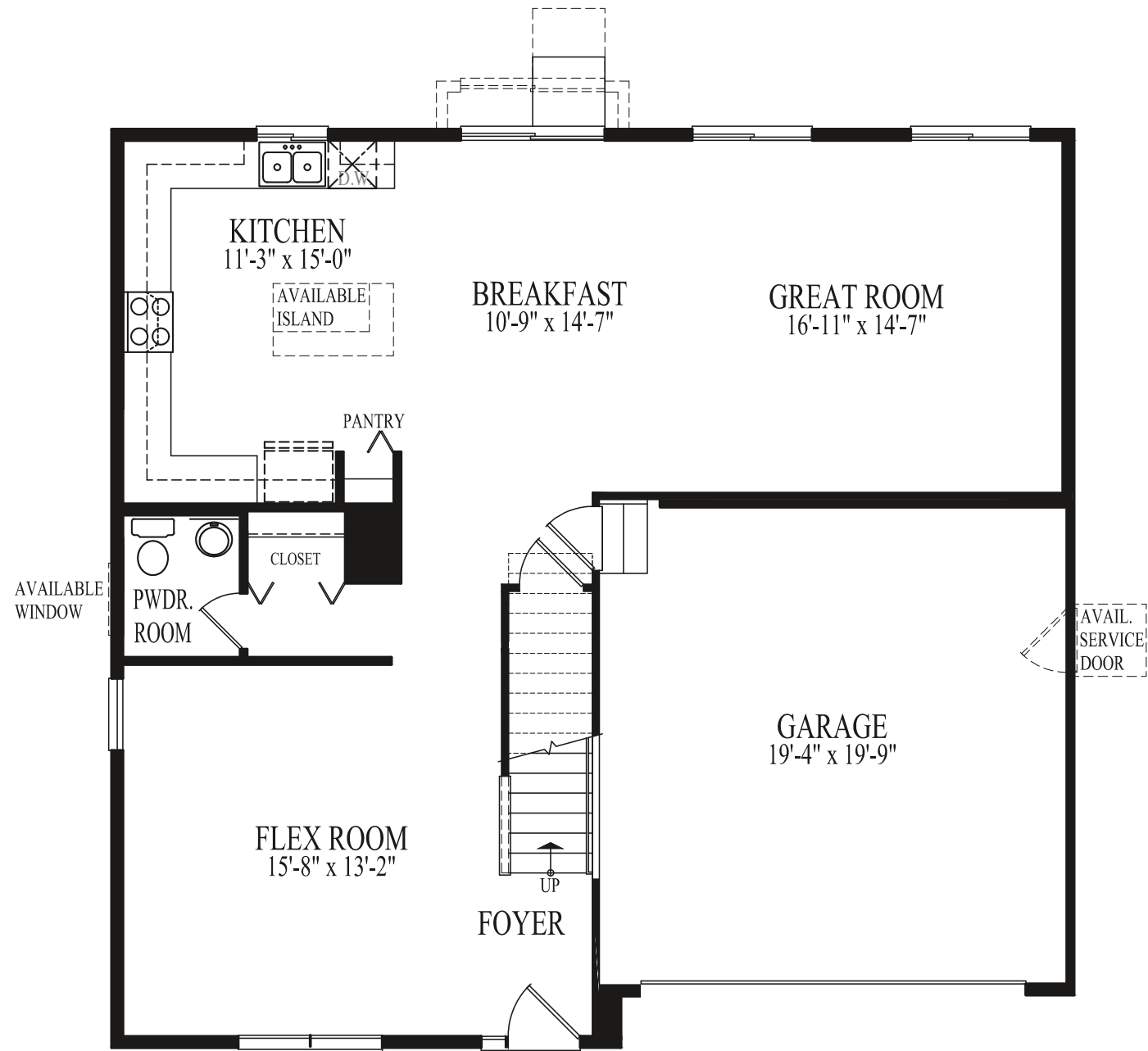


D·R·HORTON[®]
America's Builder

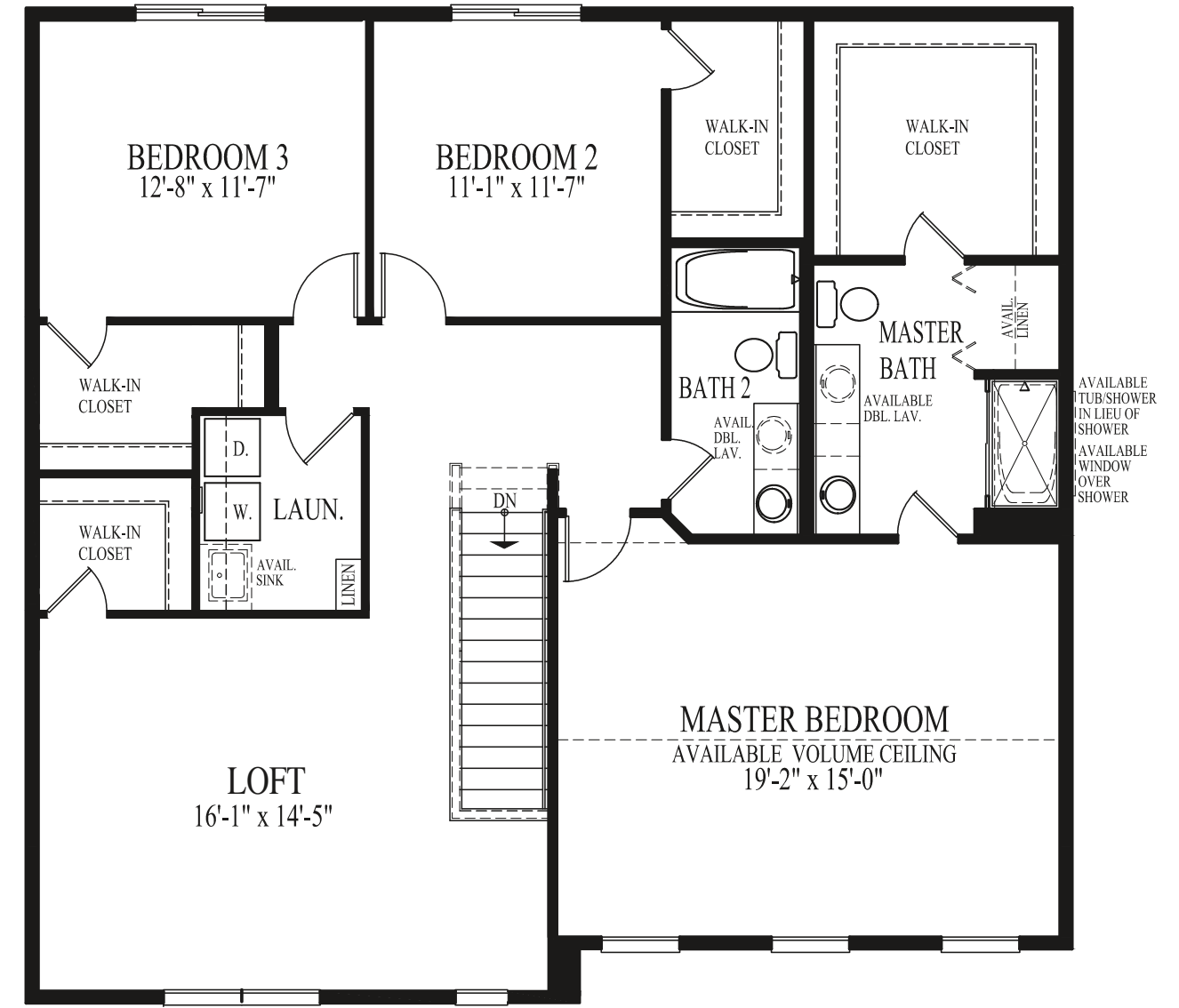
847-984-4522 | www.drhorton.com/heatherglen
facebook.com/drhortonchicago



Glenmont at Heather Glen



Main Level



Upper Level