

642 W. Belden Ave., Elmhurst **EMERALD**  
H O M E S

## EMERALD PREMIER LUXURY HOMES



**Please call for pricing information**

**Don't miss this exceptional 3089 sq. ft. custom home in Elmhurst**

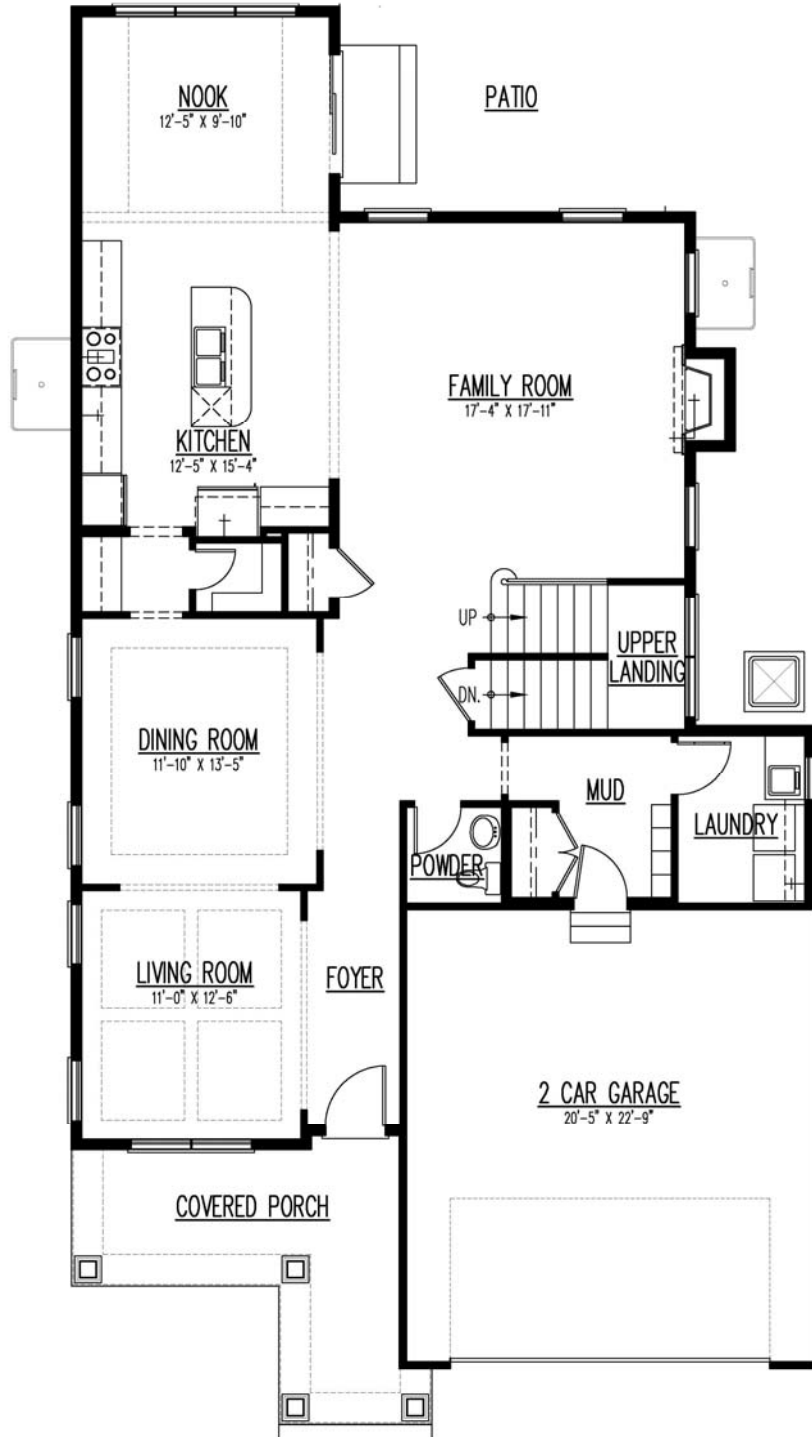
- Fabulous two-story home with open floor plan
- Four bedrooms and three and a half baths
- Nine-foot first floor ceiling
- Gourmet island kitchen with walk-in pantry
- Formal dining room
- Large open great room with fireplace
- First floor mud room with custom cubbies
- Master bedroom suite with large walk-in closet
- Luxury master bath with dual vanities, soaking tub, and separate shower
- Attached two-car garage
- Deep pour unfinished lower level with rough-in bath for future expansion

All prices, included features, availability and delivery dates are subject to change without notice. Elevations may vary. All measurements are approximate.

**For more information or to schedule a showing, please contact:**  
**MICHELE PAPPAS 224.229.1386 [MMPappas@DRHorton.com](mailto:MMPappas@DRHorton.com)**  
**DEBORAH MURPHY 224.778.0367 [DeborahMurphy@EmeraldHomes.com](mailto:DeborahMurphy@EmeraldHomes.com)**



FIRST FLOOR PLAN

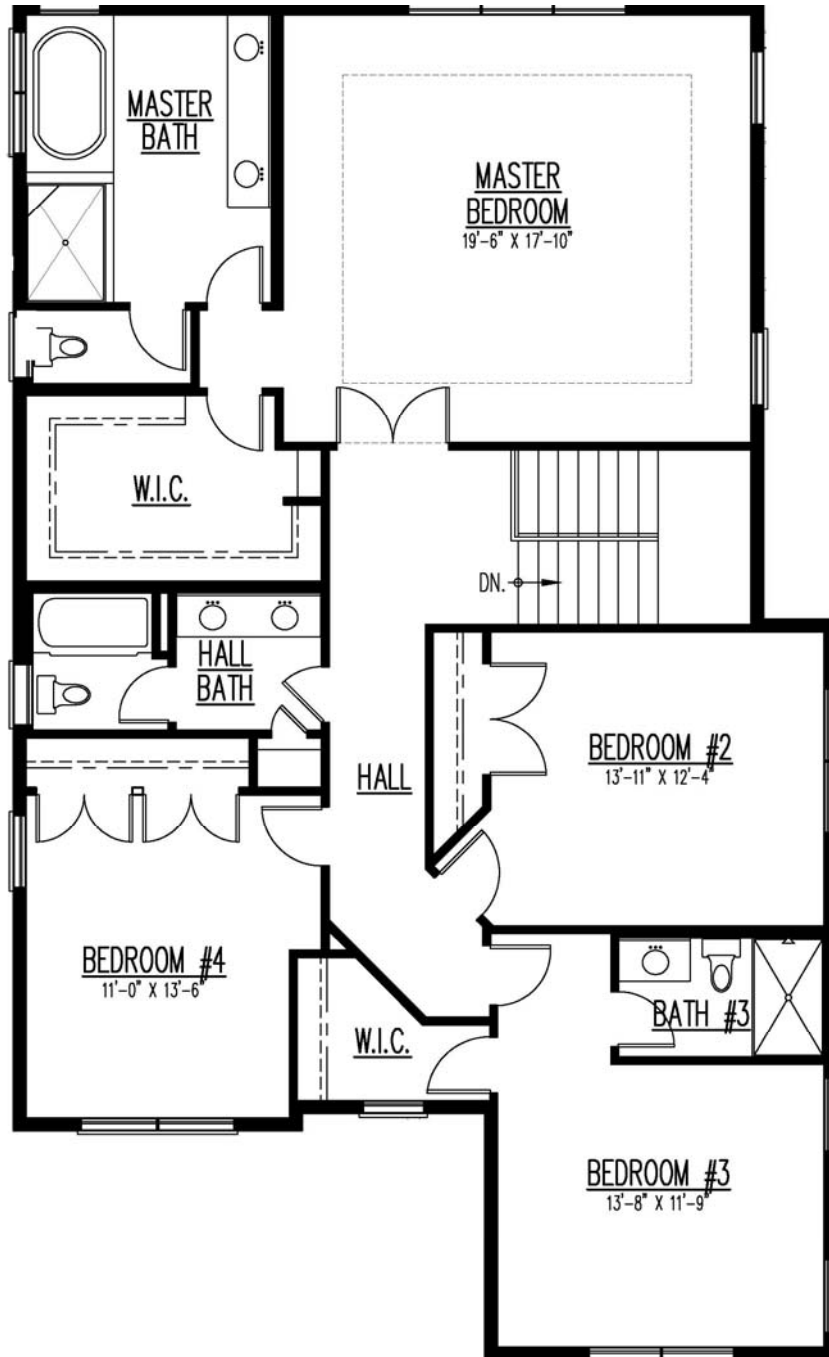


All prices, included features, availability and delivery dates are subject to change without notice. Elevations may vary. All measurements are approximate.

For more information or to schedule a showing, please contact:  
MICHELE PAPPAS 224.229.1386 MMPappas@DRHorton.com  
DEBORAH MURPHY 224.778.0367 DeborahMurphy@EmeraldHomes.com



SECOND FLOOR PLAN



All prices, included features, availability and delivery dates are subject to change without notice. Elevations may vary. All measurements are approximate.

For more information or to schedule a showing, please contact:  
MICHELE PAPPAS 224.229.1386 MMPappas@DRHorton.com  
DEBORAH MURPHY 224.778.0367 DeborahMurphy@EmeraldHomes.com



## QUALITY FEATURES

*This 3089 sq. ft. home features quality craftsmanship and materials throughout. Careful attention has been paid to every construction detail to assure lasting value. We hope that you will take the time to notice the many extra features that have been added to enhance the style and comfort of this fine home.*

### ENERGY FEATURES

- R-21 insulation with vapor barrier in all exterior walls
- R-49 insulation with integral vapor barrier in ceiling
- Dual Zone heating and air conditioning system
- Honeywell® programmable thermostats
- Low-E glass windows
- Central whole-house Humidifier
- Cold air returns in all bedrooms and throughout living areas
- Green Guard® max wrap house wrap
- Lower level R-11 blanket insulation

### INTERIOR FEATURES

- Formal dining room
- Gourmet island kitchen with breakfast nook
- Great room with direct vent fireplace
- Hardwood flooring throughout first floor and second floor hallway (ceramic tile in mudroom and laundry)
- Upgrade carpet on second floor (ceramic tile in laundry and baths)
- Designer lever door hardware
- 9 foot first floor ceilings
- Solid core interior doors
- Oversize trim throughout the house
- 5 1/2 inch Crown molding throughout first floor
- Recessed can lighting
- Walk-in closets
- Full deep-pour unfinished lower level

### KITCHEN

- Furniture-finished cabinets with 42" uppers and crown molding
- Stainless steel 36" French door refrigerator and freezer
- Stainless steel 30" built-in convection oven
- Stainless steel 36" five-burner gas cooktop with griddle
- Stainless steel built-in microwave
- Stainless steel deluxe multi-cycle dishwasher
- Cooktop exhaust hood
- Island breakfast bar counter
- Granite countertops
- Tile backsplash and undercabinet lighting
- Breakfast area with glass door wall cabinets and glass front beverage center
- Walk-in pantry for extra storage
- Kohler® double-bowl stainless steel sink
- Moen® single-lever faucet and pull down sprayer
- Waterline for icemaker
- In-Sink-Erator® 1/2-hp garbage disposal

### BATHS

- Moen® plumbing faucets
- Water-saver toilets and showerheads
- Granite or Quartz countertops in all baths with under mounting rectangular sinks
- Personal hand-held shower in Owner's shower
- Exhaust fan in all baths
- Towel bars and toilet paper fixtures
- Ceramic tile tub and shower surrounds
- Ceramic tile walk-in shower in master bath
- Durock® cement board on all ceramic wall tile areas

### EXTERIOR FEATURES

- Woodtone Real Trim Plus fascia and aluminum soffits
- Woodtone Real Trim Plus pre-finished on all sides for durability
- Hardie Board siding pre-finished on all sides
- Maintenance-free heavy gauge gutters and downspouts
- IKO Designer Shingles 30 year warranty laminated architectural-style roof shingles
- Low-E insulated vinyl windows
- Recessed-panel, insulated, stained fiberglass front entry door with grip handle and deadbolt hardware
- Insulated steel garage doors with torsion spring hardware
- 1/2-hp garage door opener with 2 remotes and exterior keypad
- Frost proof exterior faucets in convenient locations
- Fully sodded yard and landscaping
- Concrete patio option
- Asphalt driveway

### UTILITIES AND STORAGE

- 2-car attached garage fully insulated and painted
- 200-amp electrical service
- One Carrier 92%efficient, 74,000 btu, gas forced-air heating systems
- One 13 Seer 3.5 ton Carrier air conditioning systems
- 50 gallon, insulated, gas, quick-recovery power vented water heater
- Underground utilities
- PVC underground plumbing
- Exterior remote water meter readout

### CONSTRUCTION AND SAFETY FEATURES

- Ground-fault protector outlets in all bathrooms, garage and kitchen locations
- Ground-fault protector exterior outlets with weather-proof covers
- Gypsum® drywall, glued and screwed to reduce nail pops and cracks
- Smoke detectors wired to electrical system with battery back-up on each floor and in each bedroom
- Carbon monoxide detectors on each floor and near bedrooms
- Passive interior radon reduction system

All prices, included features, availability and delivery dates are subject to change without notice. Elevations may vary.  
All measurements are approximate.

For more information or to schedule a showing, please contact:  
MICHELE PAPPAS 224.229.1386 MMPappas@DRHorton.com  
DEBORAH MURPHY 224.778.0367 DeborahMurphy@EmeraldHomes.com



642 W. Belden Ave., Elmhurst **EMERALD**  
HOMES

## EMERALD PREMIER LUXURY HOMES

Emerald Homes has created a tradition of excellence by developing innovative home designs and crafting luxury homes with meticulous attention to detail for over a decade. Our philosophy is to incorporate features and amenities into our homes that complement each individual customer's preferences, personality and lifestyle.

The successful blending of our customers' ideas and our experience creates dramatic living areas with personalized touches, from gourmet gathering kitchens to spa bath retreats to outdoor living spaces. Our focus is to create highly livable homes by combining luxury and function.

Emerald Homes are built with quality materials by an experienced team of builders, and each home is designed and constructed with the latest in building technology and design. We combine your ideas, luxury features and attention to detail to create your unique dream home.

Come and see the commitment to luxury and detail that makes each of our homes extraordinary. We invite you to discover the Emerald difference. Now featuring homes in these highly desired communities: Arlington Heights, Barrington, Deerfield, Downers Grove, Elmhurst, Glen Ellyn, Highland Park, Lake Bluff, Libertyville, Naperville, Northbrook, and Palatine, with new locations being continually introduced.

## Premier Luxury Highlights include

- Personal builder representative throughout the construction process
- Luxurious and unique homes designs with beautiful architectural detail from 2,000 to 4,500 sq. ft.

### COMMUNITY INFORMATION

#### Award winning Elmhurst Location

- Excellent school districts 65 & 115
- Metra station and historic downtown Elmhurst just minutes away featuring coffee shops, fine dining, boutiques, bookstores, and more!
- Easy access to I-94 tollway

Map is subject to change without notice. Map is schematic for exhibition only and does not represent the exact location or configuration of site features, amenities, lot lines, easements, units, buildings, or details shown thereon. All homesite sizes are approximate. All prices, included features, availability and delivery dates are subject to change without notice. Elevations may vary. All measurements are approximate.

### COMMUNITY MAP



For more information or to schedule a showing, please contact:  
**MICHELE PAPPAS 224.229.1386 MMPappas@DRHorton.com**  
**DEBORAH MURPHY 224.778.0367 DeborahMurphy@EmeraldHomes.com**

