

COME HOME TO STAY...

Carillon™

Fairmont / Carillon at Cambridge Lakes



Elevation A



Elevation B



Elevation C



Elevation D

*Illustrations and landscaping are an artist's conception and are not to scale.
Actual elevations may vary. Please consult with your Sales Representative for current details.*

*ENERGYSTAR® is a registered trademark of the U.S. Environmental Protection Agency.
Logo used with permission. Certification applies to homes built after March 1, 2010.*

D·R·HORTON
America's Builder

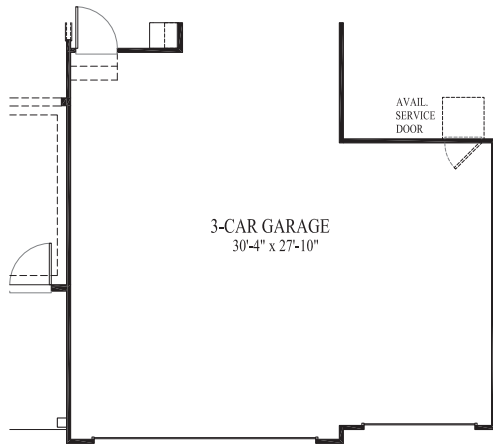
847-984-4872 | drhorton.com/chicago



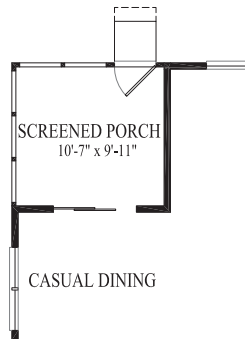
COME HOME TO STAY...

Carillon™

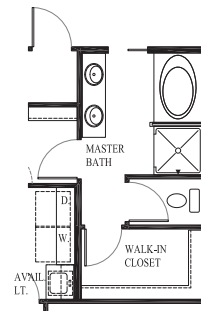
Fairmont / Carillon at Cambridge Lakes



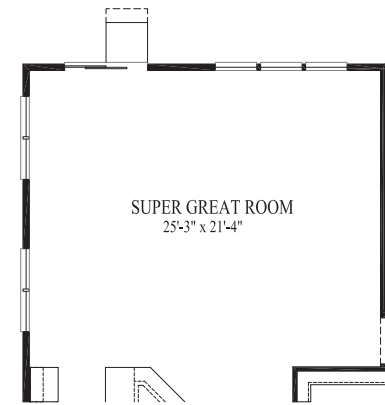
Available 3-Car Garage



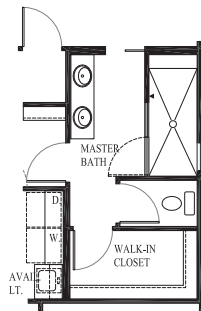
Available Screened Porch



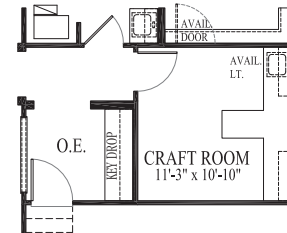
Available Luxury Bath



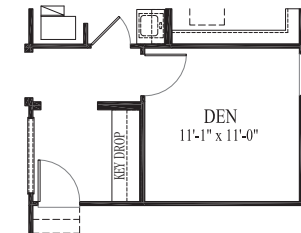
Available Super Great Room



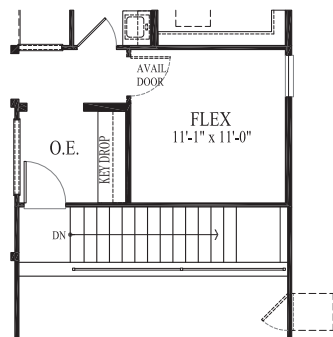
Available Serenity Shower



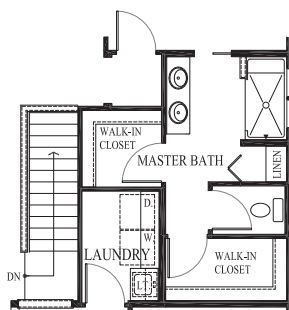
Available Craft Room



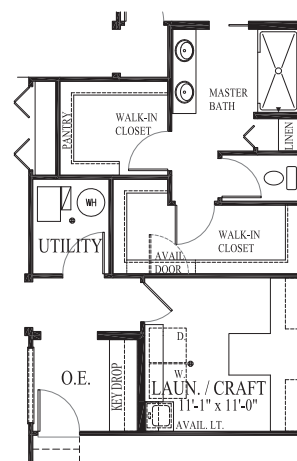
Available Den



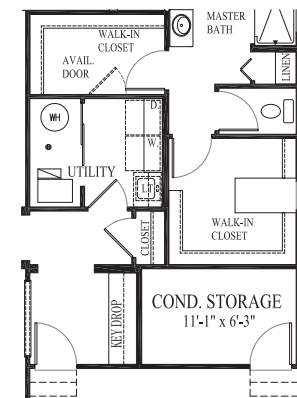
Stair to Available Basement



Stairs to Available Basement
Available Super Master Bath



Available Super Laundry/
Craft Room



Available Super/
Master Closet

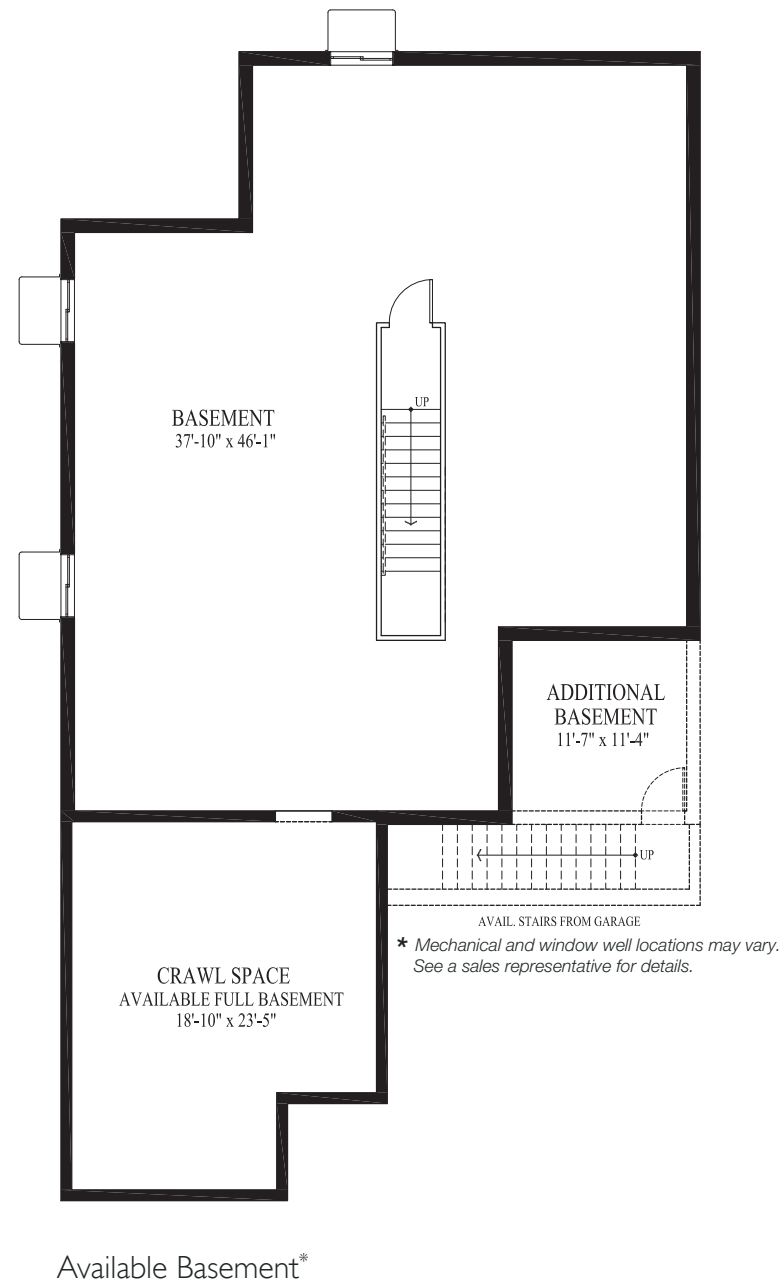
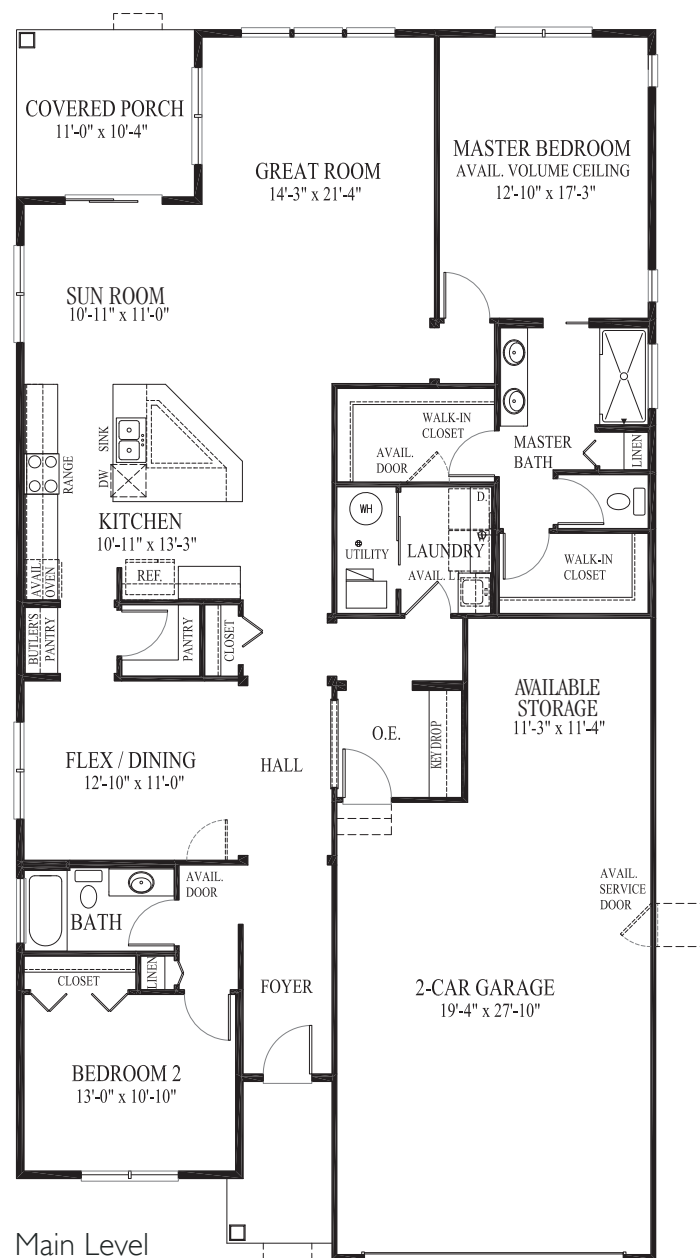
D.R. Horton's policy of continual attention to detail in design and construction requires that some revisions may be made by the architect or developer during the process of development. All dimensions are approximate. Floor plans are not to scale. Window sizes and locations vary with exterior design and specifications. Dimensions, features and specifications are subject to change without notice. Rev. 6/12

ENERGYSTAR® is a registered trademark of the U.S. Environmental Protection Agency. Logo used with permission. Certification applies to homes built after March 1, 2010.

COME HOME TO STAY...

Carillon™

Fairmont/Carillon at Cambridge Lakes



D.R. Horton's policy of continual attention to detail in design and construction requires that some revisions may be made by the architect or developer during the process of development. All dimensions are approximate. Floor plans are not to scale. Window sizes and locations vary with exterior design and specifications. Dimensions, features and specifications are subject to change without notice. Rev. 6/12

ENERGYSTAR® is a registered trademark of the U.S. Environmental Protection Agency. Logo used with permission. Certification applies to homes built after March 1, 2010.

COME HOME TO STAY...

Carillon™

Newport / Carillon at Cambridge Lakes



Elevation A



Elevation B



Elevation C



Elevation D

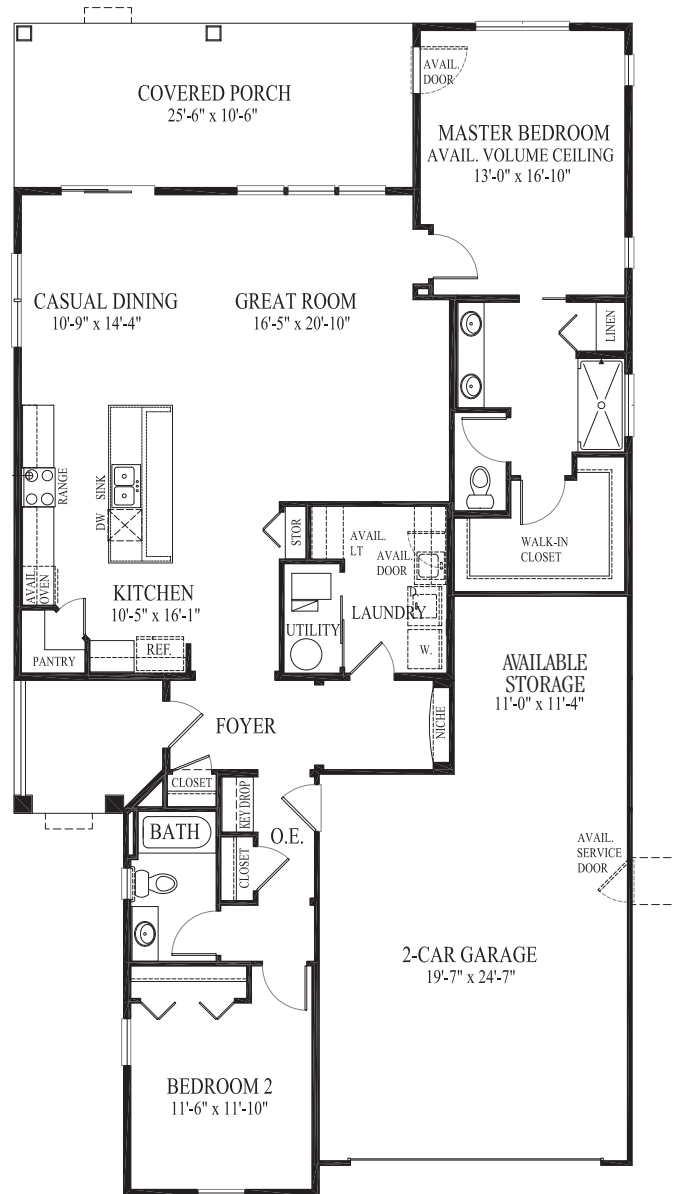
*Illustrations and landscaping are an artist's conception and are not to scale.
Actual elevations may vary. Please consult with your Sales Representative for current details.*

*ENERGYSTAR® is a registered trademark of the U.S. Environmental Protection Agency.
Logo used with permission. Certification applies to homes built after March 1, 2010.*

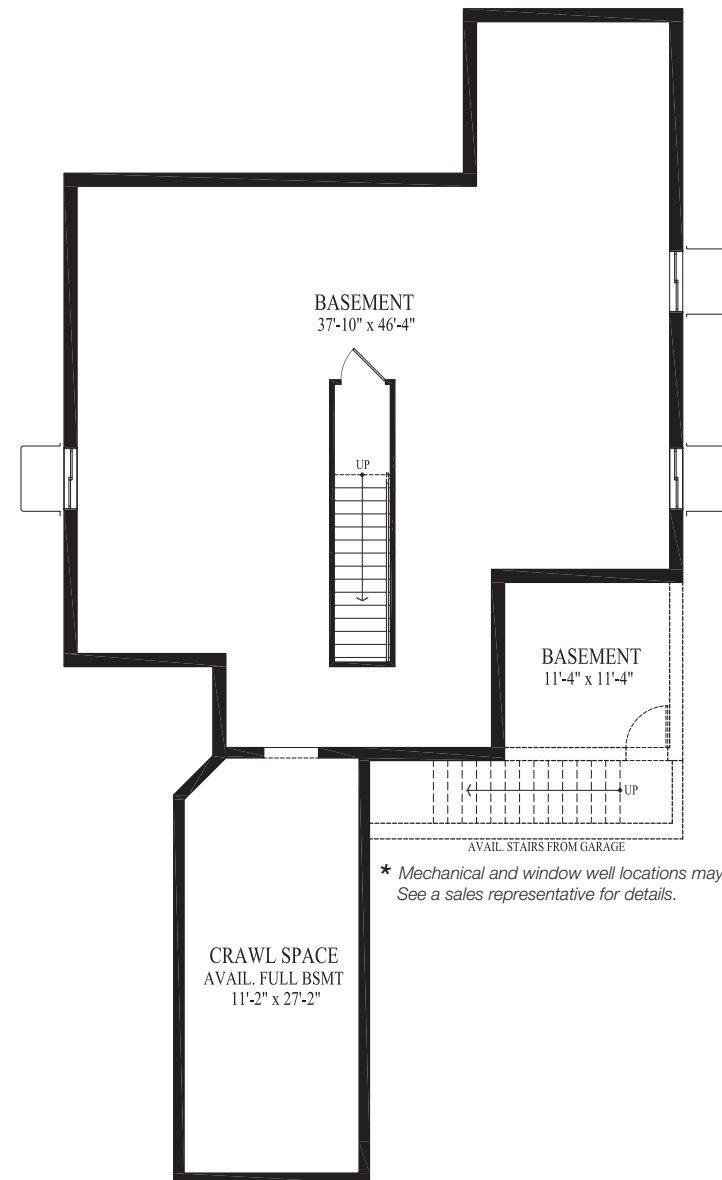
COME HOME TO STAY...

Carillon™

Newport / Carillon at Cambridge Lakes



Main Level



Available Basement*

* Mechanical and window well locations may vary. See a sales representative for details.

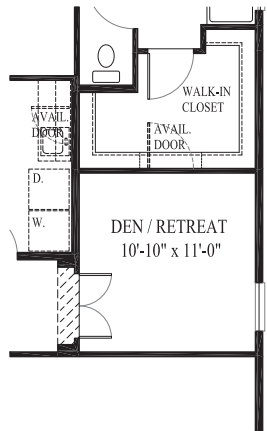
D.R. Horton's policy of continual attention to detail in design and construction requires that some revisions may be made by the architect or developer during the process of development. All dimensions are approximate. Floor plans are not to scale. Window sizes and locations vary with exterior design and specifications. Dimensions, features and specifications are subject to change without notice. Rev. 6/12

ENERGYSTAR® is a registered trademark of the U.S. Environmental Protection Agency. Logo used with permission. Certification applies to homes built after March 1, 2010.

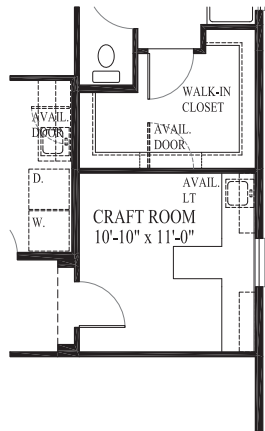
COME HOME TO STAY...

Carillon™

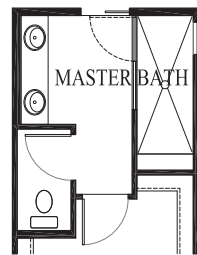
Newport / Carillon at Cambridge Lakes



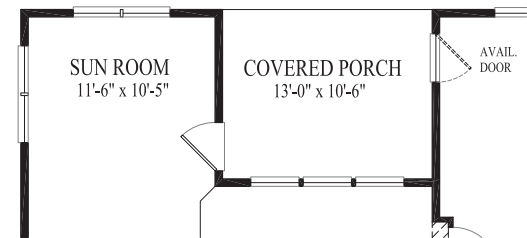
Available Den/Retreat



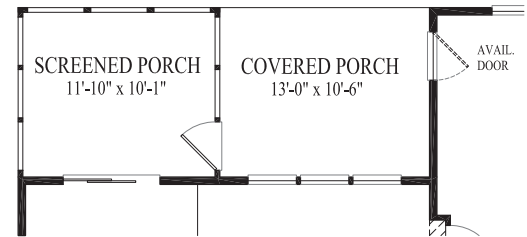
Available Craft Room



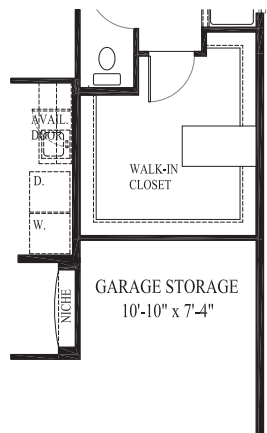
Available Serenity Shower



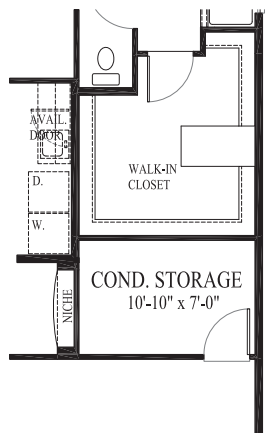
Available Sun Room



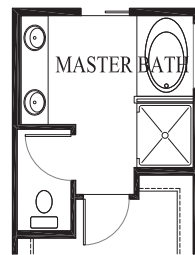
Available Screened Porch



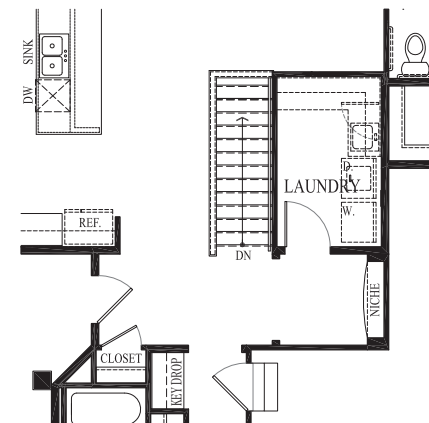
Available Garage Storage



Available Cond. Storage



Available Luxury Bath



Stairs to Available Basement

D.R. Horton's policy of continual attention to detail in design and construction requires that some revisions may be made by the architect or developer during the process of development. All dimensions are approximate. Floor plans are not to scale. Window sizes and locations vary with exterior design and specifications. Dimensions, features and specifications are subject to change without notice. Rev. 6/12

ENERGYSTAR® is a registered trademark of the U.S. Environmental Protection Agency. Logo used with permission. Certification applies to homes built after March 1, 2010.

COME HOME TO STAY...

Carillon™

Mackinac / Carillon at Cambridge Lakes



Elevation A



Elevation B



Elevation C



Elevation D

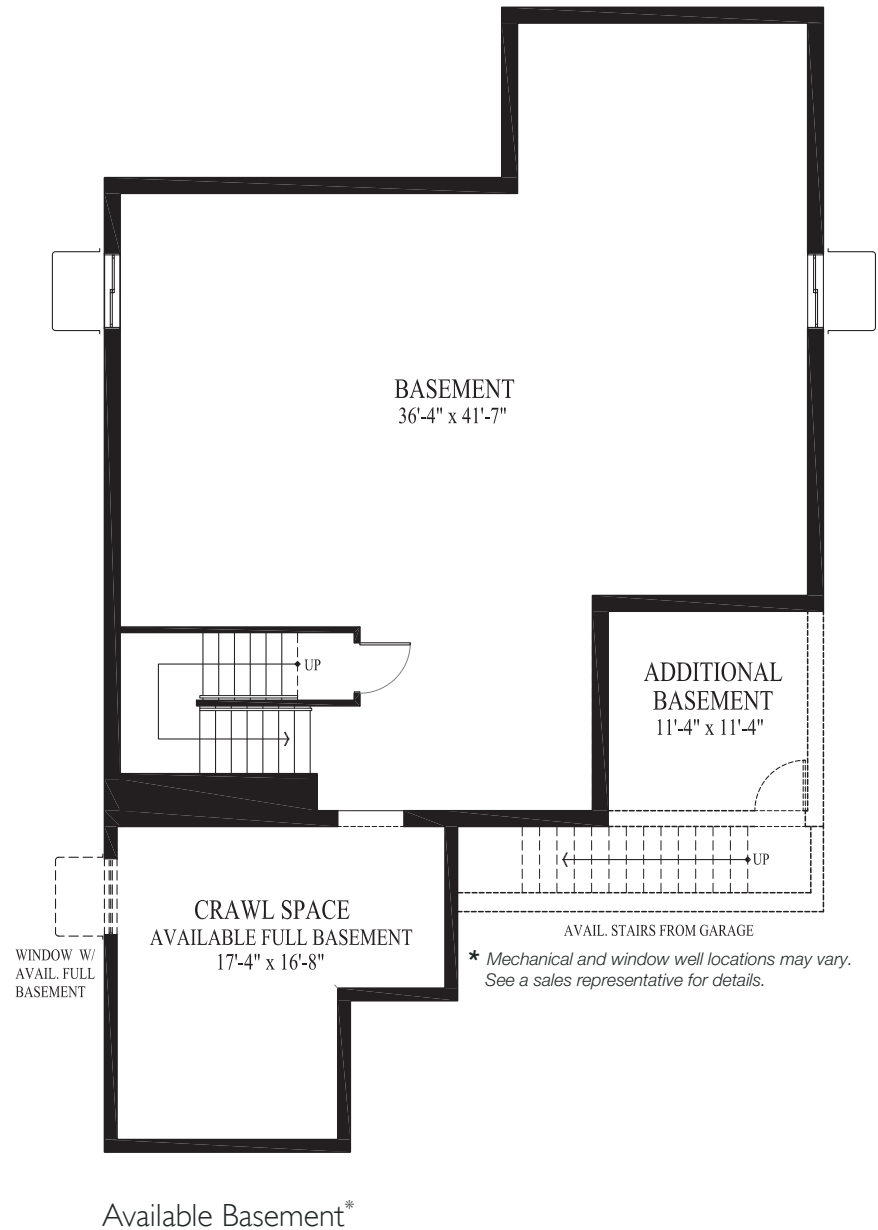
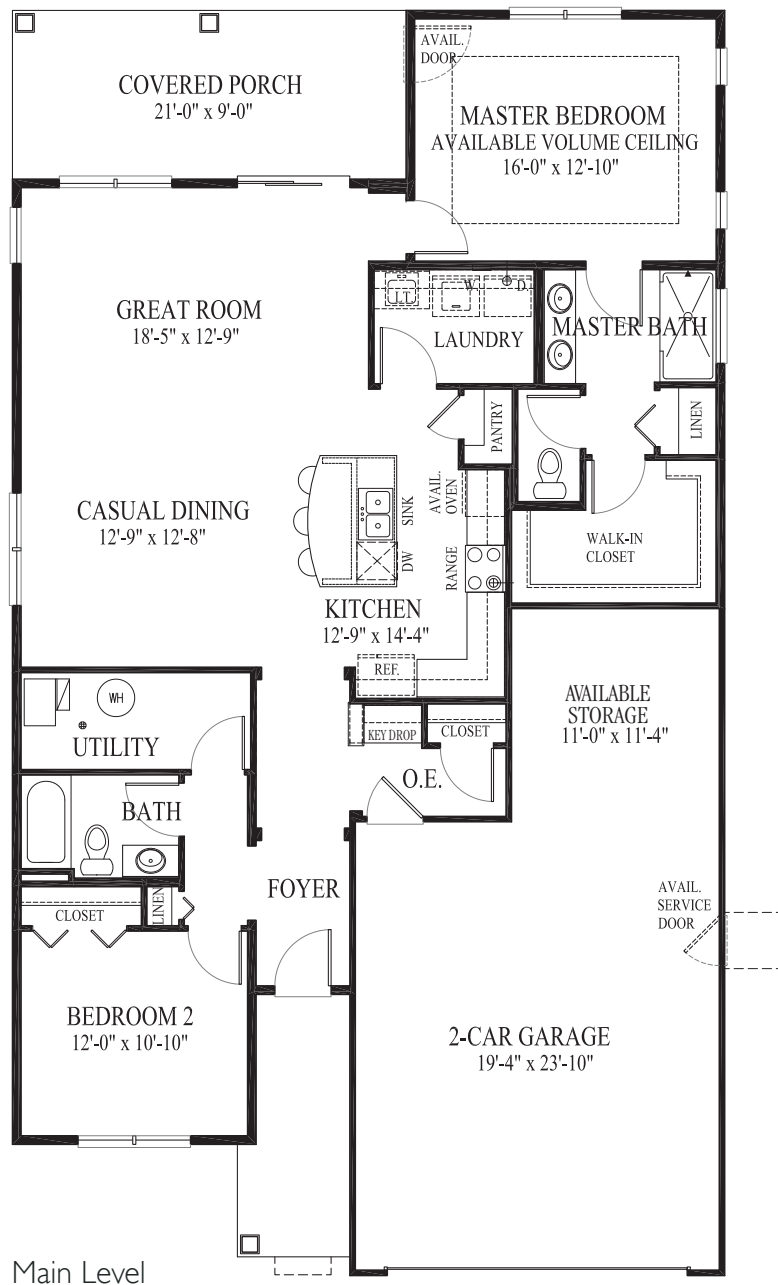
*Illustrations and landscaping are an artist's conception and are not to scale.
Actual elevations may vary. Please consult with your Sales Representative for current details.*

*ENERGYSTAR® is a registered trademark of the U.S. Environmental Protection Agency.
Logo used with permission. Certification applies to homes built after March 1, 2010.*

COME HOME TO STAY...

Carillon™

Mackinac / Carillon at Cambridge Lakes



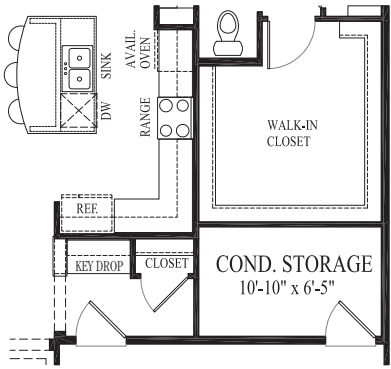
D.R. Horton's policy of continual attention to detail in design and construction requires that some revisions may be made by the architect or developer during the process of development. All dimensions are approximate. Floor plans are not to scale. Window sizes and locations vary with exterior design and specifications. Dimensions, features and specifications are subject to change without notice. Rev. 6/12

ENERGYSTAR® is a registered trademark of the U.S. Environmental Protection Agency. Logo used with permission. Certification applies to homes built after March 1, 2010.

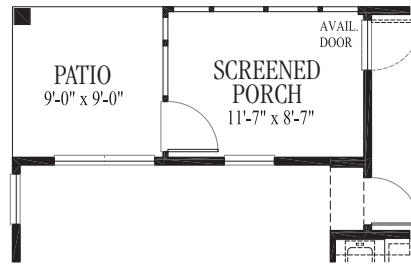
COME HOME TO STAY...

Carillon™

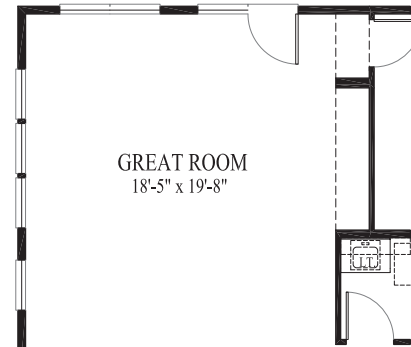
Mackinac / Carillon at Cambridge Lakes



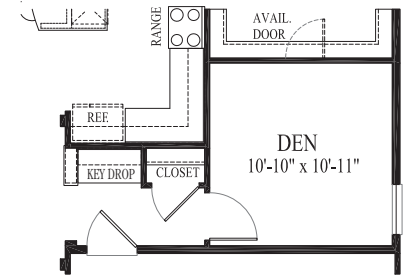
Available Super Master Closet



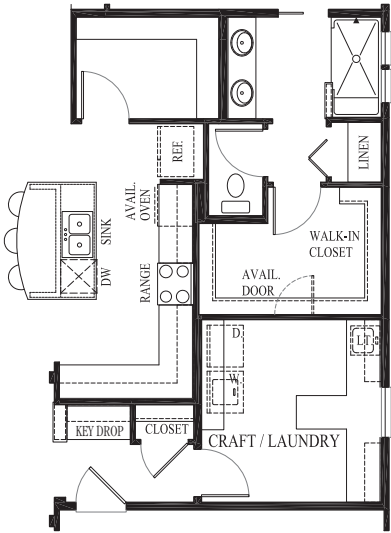
Available Screened Porch



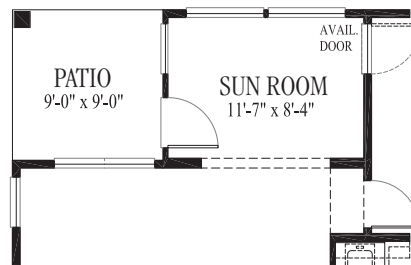
Available Super Great Room



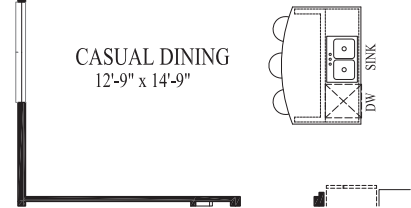
Available Den/Retreat



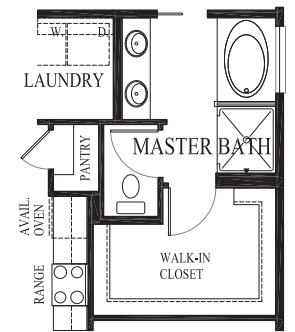
Available Craft/Super Laundry



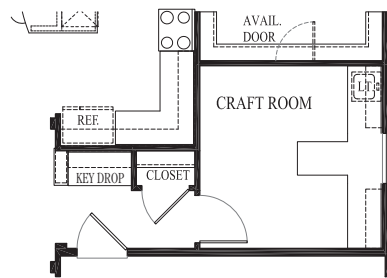
Available Sun Room



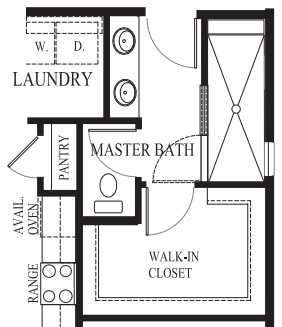
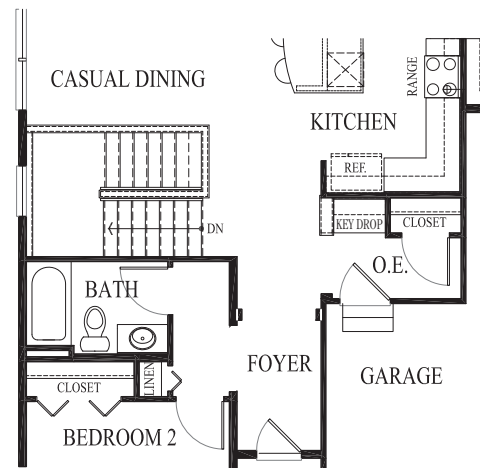
Stairs to Available Basement



Available Tub/Shower



Available Craft Room



Available Serenity Shower

D.R. Horton's policy of continual attention to detail in design and construction requires that some revisions may be made by the architect or developer during the process of development. All dimensions are approximate. Floor plans are not to scale. Window sizes and locations vary with exterior design and specifications. Dimensions, features and specifications are subject to change without notice. Rev. 6/12

ENERGYSTAR® is a registered trademark of the U.S. Environmental Protection Agency. Logo used with permission. Certification applies to homes built after March 1, 2010.