

# Welcome to makalae

## AT SEA COUNTRY



### A Thriving Community!

Encircled by the colorful Waianae Mountain Range and situated close to spanning pristine beaches, the thriving community of Sea Country will be your start to something grand.

Sea Country is the perfect place if you're in search of the many delights nature has to offer. The wholeness of this relationship between nature and the community of Sea Country has never been more obvious. It may be simple evening walks, watching quiet sunsets, star gazing or spending a day lazing at the beach. It's the type of place to take your time with, where the trail begins and possibly never ends.

Sea Country is a place to truly call home. Distinctly located in the center of the community is an eleven-acre park. Across the street a commercial /retail facility for incidental shopping, day care center, and the Sea Country Club recreation center with swimming pool.

Finally, this outstanding community will offer you the most beautifully appointed homes designed to respond to the flexible lifestyles and demands of today's busy schedules at one of the most affordable prices on Oahu. These homes will inspire you, and invite you to engage in creating the home you have long dreamed of.



### TRULY A Wonderful AND UNIQUE PART OF THE Island

Sea Country is a short drive to the best golf courses and a short walk to the ocean/beach. Sea Country is also 10 minutes from the city of Kapolei.

The city of Kapolei is a master-planned urban center that will one day rival downtown Honolulu. Everyday, something new is added to this flourishing city, bringing more & better services and amenities to Kapolei's growing population.

Minutes past the Wet and Wild Water Park, Costco, Target, Home Depot and many other retail shops, Seacountry is convenient for a family's busy lifestyle. Military personnel stationed at Schofield Barracks can take the Kolekole Pass directly to Makalae.

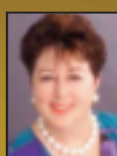
Also near by Sea Country will be the new Disney Resort, Disney's first in Hawai'i. It will include hotel rooms, vacation club villas, restaurants, childrens club and a wide array of activities.



**It's All About Home!** D.R. Horton, Schuler Division - one of Hawaii's largest, oldest and most respected homebuilders - can help you find the home of your dreams. Renown for its meticulous attention to every stage of the building process, D.R. Horton, carefully focuses on the intricate details - from planning to design, from materials to craftsmanship, and from excellence in sales to after-sale service. The result is a high-quality, high-value home that's built to last.

Whether you're a first time buyer or an experienced homeowner, D.R. Horton, makes it easy to find and purchase your dream home. By enlisting the most trusted and experienced general contractors in the state, D.R. Horton ensures that your home is built to the highest standards. Everywhere you look, you'll see the high quality that is the hallmark of D.R. Horton. **Let America's #1 builder help you create yours!**

**Makalae at Sea Country**  
87-450 Kaukama Road, Waianae, HI 96792  
Fax: (808) 668-9077  
Call Today! (808) **668-9088**



**Cicely George**  
E-Mail: cgeorge@drhorton.com



**Donna Walker**  
E-Mail: dmwalker@drhorton.co



### Features:

#### Exterior Detailing

- Front door with deadbolt lock
- Concrete driveways and sidewalks\*
- 30 year warranty - siding
- 30 year limited warranty - roofing material
- Front yard landscaping

#### Inviting Living Areas

- Central Air conditioning
- Low-maintenance vinyl flooring in kitchen and bathrooms
- Designer Laminate Kitchen Countertops
- Pre-wired for cable TV & telephone\*
- Laundry Tray
- Pre-wired for ceiling fans\*
- Walk-in closets in master bedroom\*
- Handsome carpeting in a range of fashionable colors
- Cultured marble bathroom countertops
- Sterling tub & shower surrounds
- Stainless steel kitchen sinks
- Attractive wood cabinetry
- Range, dishwasher, and range hood

#### Practicality & Safety

- Two car garages\*
- Steel roll-up garage door\*
- Automatic garage door openers\*
- Direct access from garage into home\*
- Steel framing
- Termite treatment on all structural lumber
- Copper Creek hardware
- GE appliances
- Kichler lighting fixtures
- Delta plumbing fixtures
- Ground termite warranty
- Smoke detectors
- 10-year limited structural warranty



#### Optional Personal Touches

- Window coverings
- Security alarms
- Dual lavatory at master bedroom
- Upgraded flooring
- Solid surface countertops
- Tub enclosures
- Tile or wood laminate flooring
- Appliance upgrades
- Screened lanai enclosure
- And many more choices to make your home uniquely yours

#### Energy Efficient Features

- Solar hot water system
- Dual pane low "E" windows
- Energy star appliances
- Hybrid steel & wood framing
- Hawaii's Built Green
- Cementitious siding
- Low flow plumbing fixtures
- Attic ventilation for proper airflow & cooling



\*Per Plan

[www.drhortonhawaii.com](http://www.drhortonhawaii.com)