

“5.875%*
30 Year Fixed
DHI Program”

* On Select D.R. Horton Hawai'i homes. Limited Funds. Program based on a conventional fixed interest rate of 5.875% for thirty years with an APR of 5.994%. Some restrictions may apply see loan officer for details. Close by September 29, 2006 or sooner. These rates could change on a daily basis.

Mortgage Programs to Fit Your Needs

DHI Mortgage Honolulu works hand in hand with D.R. Horton Hawai'i homes, allowing each company the unique opportunity to hold one another accountable to our mutual goal of providing the best customer service to each of our homebuyers.

DHI Mortgage is in contact with D.R. Horton Hawai'i throughout the entire home buying process ensuring timely notification of any changes and constant communication every step of the way.

100% Customer Satisfaction is our goal & DHI Mortgage offers the following services to help make the home buying process even easier:

- Specialist Lender
- Save Up Front; out of pocket costs
- Competitive Rates
- DHI is a mortgage banker & mortgage broker
- Extended Lock Programs
- Closing Credit



Contact DHI Mortgage for current rates & loan programs today!

(808) 545-4701
Toll Free 1-866-625-6314

DHI Mortgage Honolulu Branch Office

828 Fort Street Mal, #130
Honolulu, HI 96813

Open Monday thru Friday 10 am to 5 pm

www.dhimortgage.com

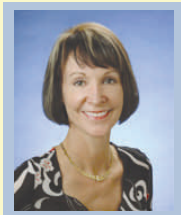


DHI Mortgage Honolulu Team



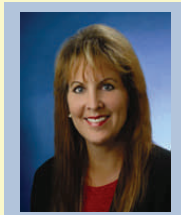
Laura Bingaman
Branch Manager

lbngaman@dhimortgage.com



Sandi Tompkins
Senior Loan Officer

stompkins@dhimortgage.com



Brenda Carr
Senior Loan Officer

bcarr@dhimortgage.com



Naomi Berning
Senior Loan Officer

nberning@dhimortgage.com



Jason Aiana
Senior Loan Officer

jaiana@dhimortgage.com

It's heartwarming to have the camaraderie of teammates who are all working to serve our customers.

*- Patricia Garza
DHI Employee since 1999*

