

# HIGHPOINTE

at Makakilo

## THE *Symphony G* (S7)

**4 Bedrooms / 3 Baths / 3-Car Garage**

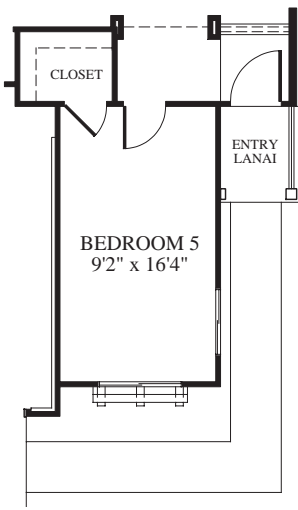


### POPULAR OPTIONS

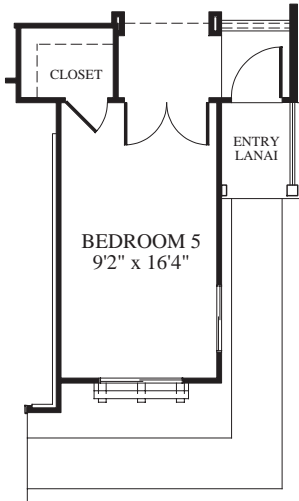
- *Extended family room*
- *Extended family room and master bedroom*
- *Optional bedroom 5 or den instead of 3rd car garage*
- *Multiple dining area configurations*
- *Covered lanai on first floor*
- *Lanai off master bedroom*

Living	2,000 Sq. Ft.
Entry Lanai	26 Sq. Ft.
Garage	547 Sq. Ft.
<hr/>	
Total	2,573 Sq. Ft.

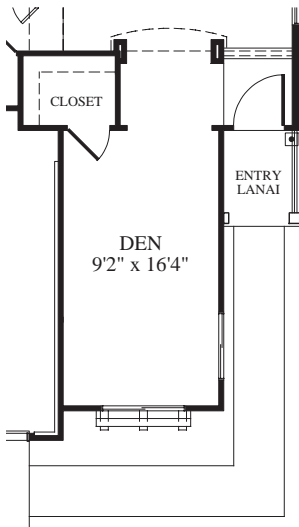
Because we are continually improving our homes, we reserve the right to make changes and modifications to methods and materials of construction and to the floorplans, features, square footage and room dimensions without notice. Floorplans, features, square footage and room dimensions are intended to be as accurate as possible. However, due to actual construction, floorplans, features, square footage and room dimensions may differ. These floorplans and renderings are a fair representation of the models to assist the customer in visualizing the homes and may not be accurately depicted. Some floorplans may be reversed on some lots. Exterior features will vary depending on Craftsman or Mediterranean style exteriors. Sales prices are subject to change without notice. Check with your sales representative. Pictured above is optional Mediterranean exterior.



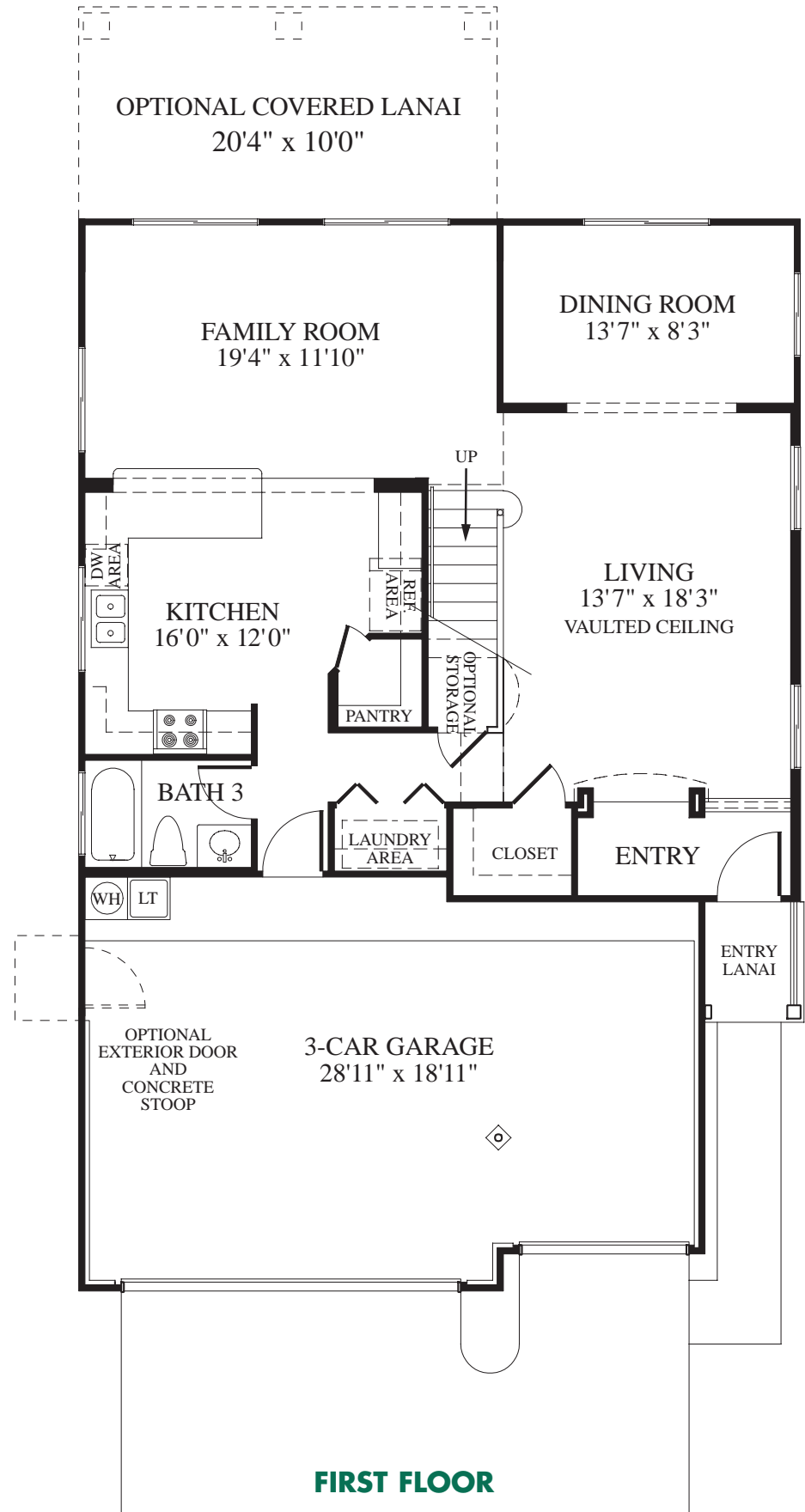
**BEDROOM 5 OPTION 1**  
 (158 sq. ft.)  
 2-Car Garage (384 sq. ft.)



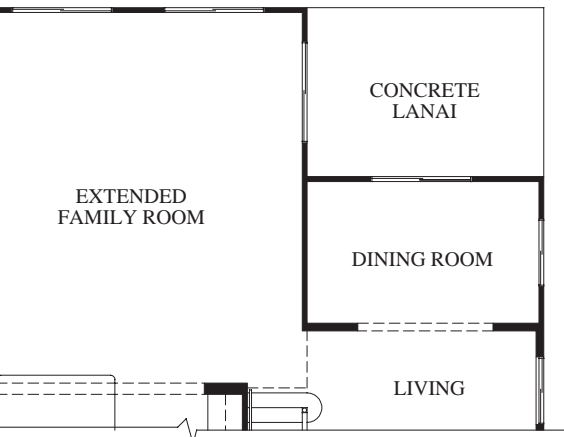
**BEDROOM 5 OPTION 2**  
 w/Pair of Doors (158 sq. ft.)  
 2-Car Garage (384 sq. ft.)



**DEN OPTION 2**  
 Den (158 sq. ft.)  
 2-Car Garage (384 sq. ft.)



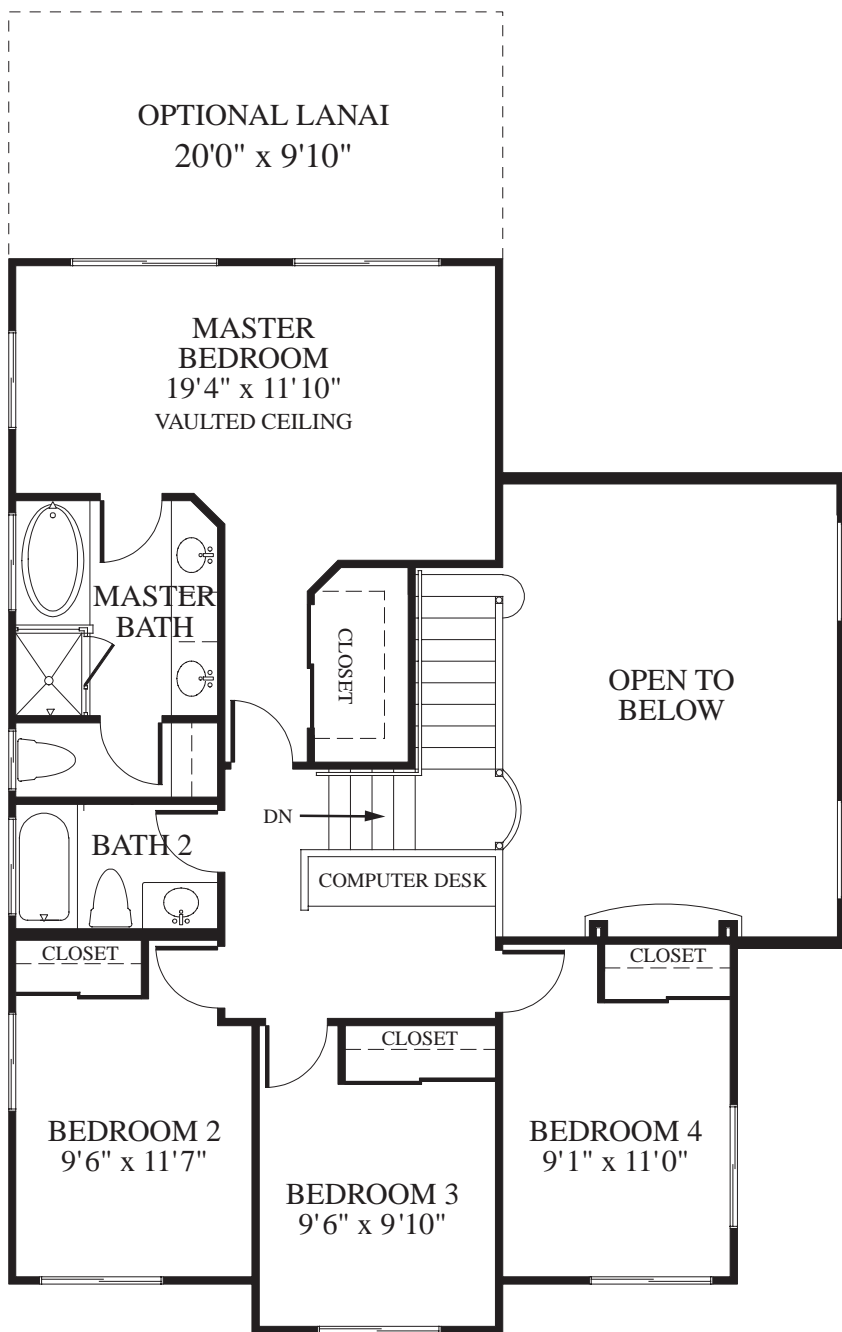
**FIRST FLOOR**



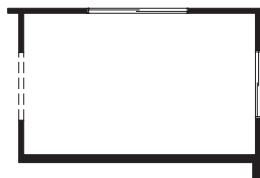
**EXTENDED FAMILY ROOM OPTION**  
(extra 200 sq. ft.)



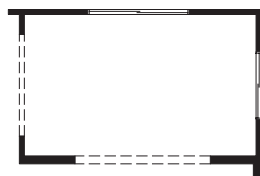
**EXTENDED FAMILY ROOM AND  
EXTENDED MASTER BEDROOM OPTION**  
(extra 400 sq. ft.)



**SECOND FLOOR**



**OPTION A**  
Dining Configuration



**OPTION B**  
Dining Configuration



**Symphony G Kitchen**



**Symphony G Interior**